

Converting Colors

XYZ(34.8934, 31.4156, 29.1463)

Have a look what the booklet for
XYZ(34.8934, 31.4156, 29.1463)
contains.

XYZ(34.8507, 31.3410, 29.0235)	3
<i>Conversions</i>	4
<i>Details</i>	6
<i>Harmonies</i>	12
<i>Previews</i>	24
<i>Color Blindness Simulation</i>	28
<i>CSS Examples</i>	31

Color

**XYZ(34.8507, 31.3410,
29.0235)**

Conversions

Conversions Part 1

Format	Color
Hex	BC8C8C
RGB	188, 140, 140
RGB Percent	74%, 55%, 55%
CMY	0.2627, 0.4510, 0.4510
CMYK	0.00, 0.26, 0.26, 0.26
HSL	0°, 26%, 64%
HSV	0°, 26%, 74%
XYZ	34.8507, 31.3410, 29.0235
YIQ	154.3520, 28.6080, 10.1760

Conversions

Conversions Part 2

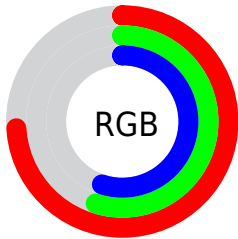
Format	Color
R_{YB}	188, 140, 140
Decimal	12356748
CIE _{Lab}	62.79, 18.24, 7.14
CIE _{LCh}	63, 19.588, 21.372
Yxy	31.3410, 0.3660, 0.3292
Android (android.graphics.Color)	4290546828 (0xFFBC8C8C)
YUV	154.3520, -7.0755, 29.5093
Hunter-Lab	55.9830, 13.1500, 8.4502

Details

The XYZ color **34.8507, 31.3410, 29.0235** is a light color, and the websafe version is hex **CC9999**. A complement of this color would be **37.8749, 45.1711, 54.2997**, and the grayscale version is **30.8919, 32.5007, 35.3932**.

A 20% lighter version of the original color is **66.5736, 61.8463, 58.8808**, and **15.3331, 13.1188, 11.3969** is the 20% darker color. If you saturate the color by 10%, you get **31.0651, 25.8018, 21.4968**, and if you desaturate by 10%, it is **39.3441, 37.9164, 37.9553**.

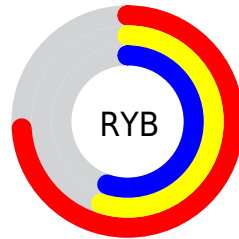
Distribution



Red (74%)

Green (55%)

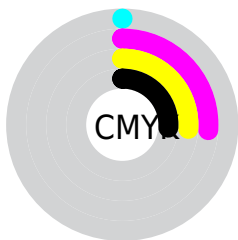
Blue (55%)



Red (74%)

Yellow (55%)

Blue (55%)

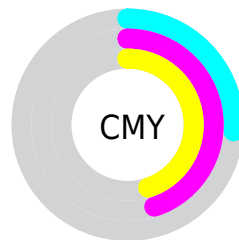


Cyan (0%)

Magenta (26%)

Yellow (26%)

Black (26%)



Cyan (26%)


Magenta (45%)


Yellow (45%)

Brightness & Saturation Gradients

These gradients show how the XYZ color 34.8507, 31.3410, 29.0235 changes by changing the brightness by 10 percent. The first figure shows a shift by +10% for each color and the second figure -10%.


Similar to the brightness gradients but the following saturation gradients show a change of the XYZ color 34.8507, 31.3410, 29.0235 by changing the saturation by 10% instead.


 34.8507, 31.3410,
29.0235


 34.8507, 31.3410,
29.0235


315.4284,
308.1062, 311.3902


 23.7139, 20.8586,
18.8529


 66.5900, 61.7765,
59.1571

 15.2451, 13.0207,
11.3883


 87.9231, 82.4985,
79.9571

 9.0790, 7.4428,
6.2112

 113.3857,
107.4025, 105.1373

 4.8503, 3.7405,
2.9031

143.3432,
136.8729, 135.1162

 2.1935, 1.5295,
1.0453

178.1608,
171.2941, 170.3124

 0.7393, 0.3094,
0.0000

218.2040,

 0.0000, 0.0000,

211.0504, 211.1445

0.0000

263.8381,
256.5263, 258.0309

■ 34.8507, 31.3410,
29.0235

■ 34.8507, 31.3410,
29.0235

■ 31.0651, 25.8018,
21.4968

■ 39.3441, 37.9164,
37.9553

■ 27.9488, 21.2418,
15.3019

■ 44.5762, 45.5723,
48.3566

■ 25.4638, 17.6054,
10.3619

■ 50.5789, 54.3559,
60.2901

■ 23.5669, 14.8297,
6.5911

■ 57.3817, 64.3102,
73.8142

■ 22.2097, 12.8436,
3.8933

■ 65.0125, 75.4760,
88.9844

■ 21.3361, 11.5652,
2.1569

■ 73.4978, 87.8921,
105.8535

■ 20.8764, 10.8925,
1.2434

■ 74.5491, 89.4314,
107.9406

■ 20.7392, 10.6917,
0.9706

Harmonies

Analogous

The Analogous color harmony consists of three colors that are next to each other on the color wheel.



35.1805, 31.3410, 36.3876



34.8507, 31.3410, 29.0235



33.1234, 31.3410, 23.8437

Triad

The Triadic color harmony groups three colors that are evenly spaced from another and form a triangle on the color wheel.



34.8507, 31.3410, 29.0235



25.9409, 31.3410, 25.7149



29.0222, 31.3410, 50.8981

Complementary

The Complementary color scheme is a pair of colors which are on the opposite of each other on the color wheel.



34.8507, 31.3410, 29.0235



37.8749, 45.1711, 54.2997

Split Complementary

Split-complementary colors differ from the complementary color scheme. The scheme consists of three colors, the original color and two neighbors of the complement color.



26.6857, 31.3410, 47.0041



34.8507, 31.3410, 29.0235



24.9780, 31.3410, 31.9582

Square

The Square scheme is like the rectangle color scheme, but the four colors are evenly spaced on the color wheel.



34.8507, 31.3410, 29.0235



27.9496, 31.3410, 22.1423



25.2422, 31.3410, 39.7918



31.7067, 31.3410, 49.7990

Rectangle

The Rectangle color scheme consists of four colors that form a rectangle on the color wheel.



34.8507, 31.3410, 29.0235



31.4655, 31.3410, 21.9615



25.2422, 31.3410, 39.7918



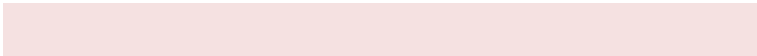
28.1725, 31.3410, 50.1108

Sweetspot

The Sweet Spot groups the original color and five complimentary colors.



34.8515, 31.3425, 29.0241



78.1906, 78.7927, 82.4762



39.1944, 33.0787, 51.8960



16.4993, 16.4828, 17.1094



90.7827, 95.5105, 104.0109



18.6292, 19.5994, 21.3438

Same Dimension

The Same Dimension uses a secret algorithm to generate beautiful new colors.



34.8515, 31.3425, 29.0241



58.9124, 50.5833, 44.1514



38.7483, 39.1360, 30.3231



9.5303, 9.5365, 9.9151



14.1204, 7.2795, 0.6609



0.5531, 0.2852, 0.0259

Inverse Universe

The Inverse Universe completely reimagines the original color for something new.



37.8749, 45.1711, 54.2997



65.3843, 80.1857, 98.2575



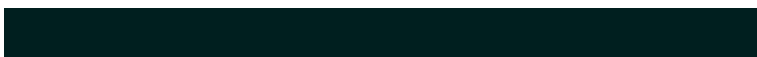
33.1680, 35.7575, 52.7307



9.8086, 10.8094, 12.2417



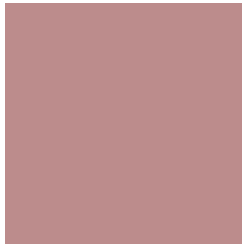
18.4219, 26.9555, 36.6249



0.7216, 1.0559, 1.4346

Previews

White Background



This preview shows how the XYZ color 34.8507, 31.3410, 29.0235 looks on a white background.

Color Contrast Check

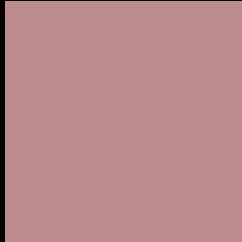
Large Text (above 18pt) WCAG AA × Fail

Any Text WCAG AA × Fail

Large Text (above 18pt) WCAG AAA × Fail

Any Text WCAG AAA × Fail

Black Background



This preview shows how the XYZ color 34.8507, 31.3410, 29.0235 looks on a black background.

Color Contrast Check

Large Text (above 18pt) WCAG AA ✓ Pass

Any Text WCAG AA ✓ Pass

Large Text (above 18pt) WCAG AAA ✓ Pass

Any Text WCAG AAA ✓ Pass

If you want to check with other color combinations, try the [Color Contrast Checker](#).

XYZ 34.8507, 31.3410, 29.0235

Background



This preview shows how black text looks on a background with the XYZ color 34.8507, 31.3410, 29.0235.



This preview shows how white text looks on a background with the XYZ color 34.8507, 31.3410,

Color Blindness Simulation

Color vision deficiency is a very complex topic, and I could not describe the different causes any better than Wikipedia does, so if you want to learn more, you should check out their [article about color blindness](#).

Dichromacy



Original Color

34.8507, 31.3410, 29.0235

Protanopia

30.1268, 31.5997, 31.7056

Deuteranopia

32.1072, 31.5022, 28.8144



Tritanopia

35.6437, 31.4540, 32.6264

Trichromacy



Original Color

34.8507, 31.3410, 29.0235

Protanomaly

31.7724, 31.5183, 30.7946

Deuteranomaly

32.9936, 31.2756, 28.7239

Tritanomaly

35.4072, 31.3594, 31.3809

Monochromacy



Original Color

34.8507, 31.3410, 29.0235

Achromatopsia

30.7148, 32.3143, 35.1903

Achromatomaly

31.8981, 31.7718, 32.8851

CSS Examples

Text

The CSS property to change the color of the text to XYZ 34.8507, 31.3410, 29.0235 is called "color". The color property can be set on classes, ids or directly on the HTML element.

This example shows how text in the color `rgb(188, 140, 140)` looks like.

```
.text, #text, p{  
    color:rgb(188, 140, 140)  
}
```

If you want to add a text shadow in that color use the text-shadow property, you can generate a text shadow directly with our [CSS Text Shadow Generator](#).

Here you see how black text with a 4 pixel rgb(188, 140, 140) colored shadow looks like.

```
.shadow{ text-shadow: 4px 4px 2px rgb(188, 140, 140) }
```

Border

The CSS property to change the border of an element to XYZ 34.8507, 31.3410, 29.0235 is called "border". The border property can be set on classes, ids or directly on the HTML element.

This example shows the color as border, it can be applied via the CSS property "border" or "border-color".

```
.border, #border, table{ border:4px solid rgb(188, 140, 140) }
```


If only the border color should be changed use the property `border-color`.

```
.border{ border-color:rgb(188, 140, 140) }
```

If you want to add a box shadow in that color use:

Here you see how a box with a 4 pixel `rgb(188, 140, 140)` colored shadow looks like.

```
.boxshadow{ -moz-box-shadow:4px 4px 4px  
4px rgb(188, 140, 140); -webkit-box-  
shadow:4px 4px 4px 4px rgb(188, 140, 140);  
box-shadow:4px 4px 4px 4px rgb(188, 140,  
140) }
```

Background

The CSS property to change the background color of an element to XYZ 34.8507, 31.3410, 29.0235 is called "background". The background property can be set on classes, ids or directly on the HTML element.

```
.background, #background, body{  
background: rgb(188, 140, 140) }
```

If only the background color should be changed can be used:

```
.background{ background-color: rgb(188,  
140, 140) }
```

This example shows the color as background, it is applied via the CSS property "background".

To optimize and compress your CSS code, you can use our [online CSS compressor and optimizer](#) based on csstidy. If you want to create a linear or radial gradient as background or border, check our [CSS Gradient Generator](#).

Hey! You found this booklet interesting? Support Converting Colors with the new Membership Option!

The pro membership hides all ads, plus gives you double the colors in the color bucket, and more awesome pro features!

[Learn more, Memberships starting at \\$2.50/m!](#)

**Follow me
on Twitter!**

@ConvertingColor