

# Converting Colors

XYZ(34.9240, 31.4578, 27.9362)

Have a look what the booklet for  
XYZ(34.9240, 31.4578, 27.9362)  
contains.

<b>XYZ(34.8797, 31.3811, 27.8857)</b> .....	3
<b><i>Conversions</i></b> .....	4
<b><i>Details</i></b> .....	6
<b><i>Harmonies</i></b> .....	12
<b><i>Previews</i></b> .....	24
<b><i>Color Blindness Simulation</i></b> .....	28
<b><i>CSS Examples</i></b> .....	31

# Color

**XYZ(34.8797, 31.3811,  
27.8857)**

# Conversions

## Conversions Part 1

<b>Format</b>	<b>Color</b>
Hex	BD8C89
RGB	189, 140, 137
RGB Percent	74%, 55%, 54%
CMY	0.2588, 0.4510, 0.4627
CMYK	0.00, 0.26, 0.28, 0.26
HSL	3°, 28%, 64%
HSV	3°, 28%, 74%
XYZ	34.8797, 31.3811, 27.8857
YIQ	154.3090, 30.1670, 9.4550

# Conversions

## Conversions Part 2

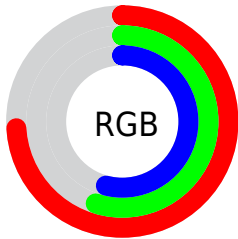
Format	Color
R <sub>Y</sub> B	189, 140, 137
Decimal	12422281
CIE Lab	62.83, 18.20, 8.90
CIE LCh	63, 20.256, 26.067
Yxy	31.3811, 0.3705, 0.3333
Android (android.graphics.Color)	4290612361 (0xFFBD8C89)
YUV	154.3090, -8.5333, 30.4240
Hunter-Lab	56.0188, 13.1087, 9.6991

# Details

The XYZ color **34.8797, 31.3811, 27.8857** is a light color, and the websafe version is hex **CC9999**. A complement of this color would be **37.0602, 44.1090, 54.7049**, and the grayscale version is **30.8786, 32.4867, 35.3781**.

A 20% lighter version of the original color is **66.5921, 61.8941, 57.1522**, and **15.2080, 13.0688, 10.7378** is the 20% darker color. If you saturate the color by 10%, you get **31.2460, 26.0966, 20.5613**, and if you desaturate by 10%, it is **39.1737, 37.6058, 36.6025**.

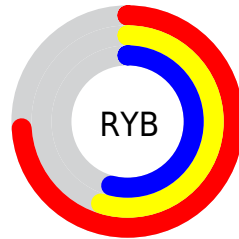
# Distribution



Red (74%)

Green (55%)

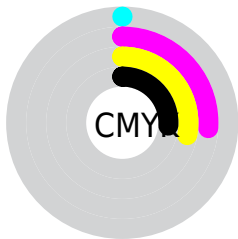
Blue (54%)



Red (74%)

Yellow (55%)

Blue (54%)

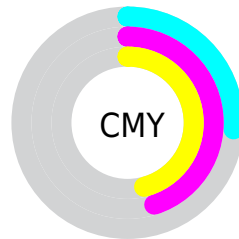


Cyan (0%)

Magenta (26%)

Yellow (28%)

Black (26%)



Cyan (26%)

Magenta (45%)


Yellow (46%)


# Brightness & Saturation Gradients

These gradients show how the XYZ color 34.8797, 31.3811, 27.8857 changes by changing the brightness by 10 percent. The first figure shows a shift by +10% for each color and the second figure -10%.


Similar to the brightness gradients but the following saturation gradients show a change of the XYZ color 34.8797, 31.3811, 27.8857 by changing the saturation by 10% instead.





 34.8797, 31.3811,  
27.8857

 34.8797, 31.3811,  
27.8857


315.5543,  
308.2902, 305.8151


 23.7363, 20.8892,  
18.0012


 66.6346, 61.8396,  
57.3228

 15.2618, 13.0430,  
10.7814


 87.9768, 82.5750,  
77.7125

 9.0908, 7.4582,  
5.8077


 113.4494,  
107.4936, 102.4411

 4.8581, 3.7503,  
2.6616

143.4176,  
136.9800, 131.9270

 2.1981, 1.5349,  
0.9240

178.2469,  
171.4185, 166.5888

 0.7418, 0.3131,  
0.0000

218.3025,

 0.0000, 0.0000,

211.1934, 206.8450

0.0000

263.9499,  
256.6892, 253.1143

■ 34.8797, 31.3811,  
27.8857

■ 34.8797, 31.3811,  
27.8857

■ 31.2460, 26.0966,  
20.5613

■ 39.1737, 37.6058,  
36.6025

■ 28.2376, 21.7025,  
14.5555

■ 44.1559, 44.8085,  
46.7767

■ 25.8197, 18.1510,  
9.7905

■ 49.8555, 53.0306,  
58.4714

■ 23.9536, 15.3883,  
6.1795

■ 56.2994, 62.3095,  
71.7453

■ 22.5955, 13.3541,  
3.6245

■ 63.5132, 72.6809,  
86.6543

■ 21.6953, 11.9795,  
2.0113

■ 71.5209, 84.1788,  
103.2513

■ 21.1879, 11.1807,  
1.1764

■ 74.7963, 89.5589,  
107.9521

■ 21.1051, 11.0563,  
1.0217

# Harmonies

## Analogous

The Analogous color harmony consists of three colors that are next to each other on the color wheel.



35.4713, 31.3811, 35.2274



34.8797, 31.3811, 27.8857



32.9047, 31.3811, 22.9962

# Triad

The Triadic color harmony groups three colors that are evenly spaced from another and form a triangle on the color wheel.



34.8797, 31.3811, 27.8857



25.6163, 31.3811, 26.3304



29.4624, 31.3811, 51.7882

# Complementary

The Complementary color scheme is a pair of colors which are on the opposite of each other on the color wheel.



34.8797, 31.3811, 27.8857



37.0602, 44.1090, 54.7049

# Split Complementary

Split-complementary colors differ from the complementary color scheme. The scheme consists of three colors, the original color and two neighbors of the complement color.



26.9470, 31.3811, 48.4758



34.8797, 31.3811, 27.8857



24.8153, 31.3811, 33.1314

# Square

The Square scheme is like the rectangle color scheme, but the four colors are evenly spaced on the color wheel.



34.8797, 31.3811, 27.8857



27.5437, 31.3811, 22.2008



25.2871, 31.3811, 41.3309



32.2327, 31.3811, 49.8110



# Rectangle

The Rectangle color scheme consists of four colors that form a rectangle on the color wheel.



34.8797, 31.3811, 27.8857



31.1298, 31.3811, 21.3825



25.2871, 31.3811, 41.3309



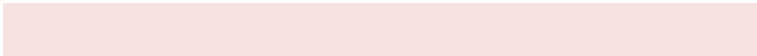
28.5607, 31.3811, 51.2445

# Sweetspot

The Sweet Spot groups the original color and five complimentary colors.



34.8805, 31.3826, 27.8863



78.4974, 79.4063, 82.5784



38.8377, 32.2727, 50.8601



16.5759, 16.6360, 17.1350



90.7827, 95.5105, 104.0109



18.6292, 19.5994, 21.3438



# Same Dimension

The Same Dimension uses a secret algorithm to generate beautiful new colors.



34.8805, 31.3826, 27.8863



58.4177, 50.3153, 41.7624



39.0655, 39.7525, 29.2813



9.5732, 9.6224, 9.9294



14.2194, 7.4775, 0.6939



0.5723, 0.3235, 0.0323



# Inverse Universe

The Inverse Universe completely reimagines the original color for something new.



37.0602, 44.1090, 54.7049



62.9635, 76.8735, 97.7457



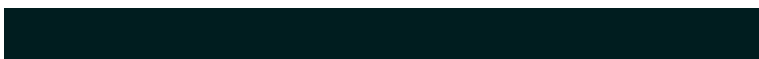
32.1424, 34.2734, 53.0656



9.7601, 10.7125, 12.2255



16.9225, 23.9567, 36.1251

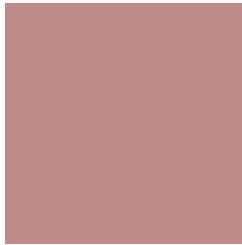


0.6774, 0.9674, 1.4199



# Previews

## White Background



This preview shows how the XYZ color 34.8797, 31.3811, 27.8857 looks on a white background.

## Color Contrast Check

Large Text (above 18pt) WCAG AA × Fail

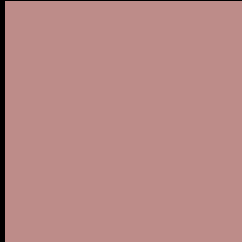
Any Text WCAG AA × Fail

Large Text (above 18pt) WCAG AAA × Fail

Any Text WCAG AAA × Fail



# Black Background



This preview shows how the XYZ color 34.8797, 31.3811, 27.8857 looks on a black background.

## Color Contrast Check

Large Text (above 18pt) WCAG AA ✓ Pass

Any Text WCAG AA ✓ Pass

Large Text (above 18pt) WCAG AAA ✓ Pass

Any Text WCAG AAA ✓ Pass

If you want to check with other color combinations, try the [Color Contrast Checker](#).

**XYZ 34.8797, 31.3811, 27.8857**

## **Background**



This preview shows how black text looks on a background with the XYZ color 34.8797, 31.3811, 27.8857.



This preview shows how white text looks on a background with the XYZ color 34.8797, 31.3811,



# Color Blindness Simulation

Color vision deficiency is a very complex topic, and I could not describe the different causes any better than Wikipedia does, so if you want to learn more, you should check out their [article about color blindness](#).

## Dichromacy



### Original Color

34.8797, 31.3811, 27.8857

### Protanopia

30.0908, 31.6077, 30.5015

### Deuteranopia

32.1112, 31.5292, 27.6859



## Tritanopia

35.7485, 31.2940, 32.5900

# Trichromacy



## Original Color

34.8797, 31.3811, 27.8857

## Protanomaly

31.7598, 31.5379, 29.6128

## Deuteranomaly

33.0076, 31.3078, 27.5959

## Tritanomaly

35.5787, 31.4567, 30.9846

# Monochromacy



## Original Color

34.8797, 31.3811, 27.8857

## Achromatopsia

30.7148, 32.3143, 35.1903

## Achromatomaly

32.0291, 31.8485, 32.4762

# CSS Examples

## Text

The CSS property to change the color of the text to XYZ 34.8797, 31.3811, 27.8857 is called "color". The color property can be set on classes, ids or directly on the HTML element.

This example shows how text in the color `rgb(189, 140, 137)` looks like.

```
.text, #text, p{  
    color:rgb(189, 140, 137)  
}
```

If you want to add a text shadow in that color use the text-shadow property, you can generate a text shadow directly with our [CSS Text Shadow Generator](#).

Here you see how black text with a 4 pixel rgb(189, 140, 137) colored shadow looks like.

```
.shadow{ text-shadow: 4px 4px 2px rgb(189, 140, 137) }
```

## Border

The CSS property to change the border of an element to XYZ 34.8797, 31.3811, 27.8857 is called "border". The border property can be set on classes, ids or directly on the HTML element.

This example shows the color as border, it can be applied via the CSS property "border" or "border-color".

```
.border, #border, table{ border:4px solid rgb(189, 140, 137) }
```



If only the border color should be changed use the property `border-color`.

```
.border{ border-color:rgb(189, 140, 137) }
```

If you want to add a box shadow in that color use:

Here you see how a box with a 4 pixel `rgb(189, 140, 137)` colored shadow looks like.

```
.boxshadow{ -moz-box-shadow:4px 4px 4px  
4px rgb(189, 140, 137); -webkit-box-  
shadow:4px 4px 4px 4px rgb(189, 140, 137);  
box-shadow:4px 4px 4px 4px rgb(189, 140,  
137) }
```

# Background

The CSS property to change the background color of an element to XYZ 34.8797, 31.3811, 27.8857 is called "background". The background property can be set on classes, ids or directly on the HTML element.

```
.background, #background, body{  
background: rgb(189, 140, 137) }
```

If only the background color should be changed can be used:

```
.background{ background-color: rgb(189,  
140, 137) }
```

This example shows the color as background, it is applied via the CSS property "background".

To optimize and compress your CSS code, you can use our [online CSS compressor and optimizer](#) based on csstidy. If you want to create a linear or radial gradient as background or border, check our [CSS Gradient Generator](#).

Hey! You found this booklet interesting? Support Converting Colors with the new Membership Option!

The pro membership hides all ads, plus gives you double the colors in the color bucket, and more awesome pro features!

**[Learn more, Memberships starting at \\$2.50/m!](#)**

**Follow me  
on Twitter!**

@ConvertingColor