

Converting Colors

XYZ(35.1107, 33.3275, 38.1573)

Have a look what the booklet for
XYZ(35.1107, 33.3275, 38.1573)
contains.

XYZ(35.0850, 33.2982, 38.2962)	3
<i>Conversions</i>	4
<i>Details</i>	6
<i>Harmonies</i>	12
<i>Previews</i>	24
<i>Color Blindness Simulation</i>	28
<i>CSS Examples</i>	31

Color

**XYZ(35.0850, 33.2982,
38.2962)**

Conversions

Conversions Part 1

Format	Color
Hex	B095A1
RGB	176, 149, 161
RGB Percent	69%, 58%, 63%
CMY	0.3098, 0.4157, 0.3686
CMYK	0.00, 0.15, 0.09, 0.31
HSL	333°, 15%, 64%
HSV	333°, 15%, 69%
XYZ	35.0850, 33.2982, 38.2962
YIQ	158.4410, 12.2400, 9.4560

Conversions

Conversions Part 2

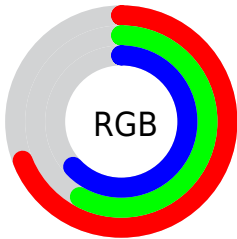
Format	Color
RYB	176, 149, 161
Decimal	11572641
CIELab	64.40, 12.11, -2.55
CIElCh	64, 12.379, 348.099
Yxy	33.2982, 0.3289, 0.3121
Android (android.graphics.Color)	4289762721 (0xFFB095A1)
YUV	158.4410, 1.2616, 15.3992
Hunter-Lab	57.7046, 7.5468, 1.0448

Details

The XYZ color **35.0850, 33.2982, 38.2962** is a light color, and the websafe version is hex **999999**. A complement of this color would be **34.6220, 40.1215, 41.0434**, and the grayscale version is **32.6910, 34.3935, 37.4545**.

A 20% lighter version of the original color is **67.0293, 64.8255, 73.9455**, and **15.3505, 14.0721, 16.6590** is the 20% darker color. If you saturate the color by 10%, you get **31.6794, 27.8132, 33.0715**, and if you desaturate by 10%, it is **38.9808, 39.6548, 44.0178**.

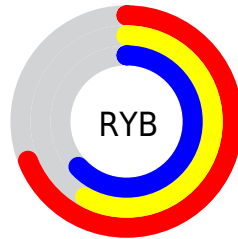
Distribution



Red (69%)

Green (58%)

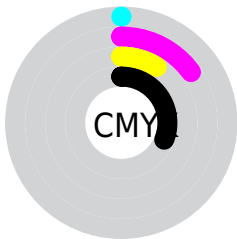
Blue (63%)



Red (69%)

Yellow (58%)

Blue (63%)

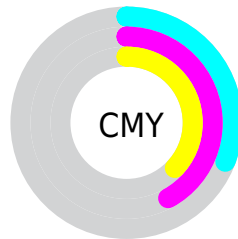


Cyan (0%)

Magenta (15%)

Yellow (9%)

Black (31%)



Cyan (31%)

Magenta (42%)

Yellow (37%)

Brightness & Saturation Gradients

These gradients show how the XYZ color 35.0850, 33.2982, 38.2962 changes by changing the brightness by 10 percent. The first figure shows a shift by +10% for each color and the second figure -10%.

Similar to the brightness gradients but the following saturation gradients show a change of the XYZ color 35.0850, 33.2982, 38.2962 by changing the saturation by 10% instead.

■ 35.0850, 33.2982,
38.2962

■ 35.0850, 33.2982,
38.2962

316.4448,
316.9913, 354.2251

■ 23.8952, 22.3550,
25.9090

■ 66.9506, 64.8408,
73.7704

■ 15.3802, 14.1180,
16.5305

■ 88.3571, 86.2090,
97.6944

■ 9.1747, 8.2028,
9.7419

113.8998,
111.8210, 126.3013

■ 4.9133, 4.2250,
5.1248

143.9441,
142.0611, 160.0093

■ 2.2307, 1.8002,
2.2607

178.8555,
177.3138, 199.2372

■ 0.7589, 0.4873,
0.7090

218.9991,

■ 0.0000, 0.0000,

217.9635, 244.4034

0.0000

264.7404,
264.3945, 295.9266

■ 35.0850, 33.2982,
38.2962

■ 35.0850, 33.2982,
38.2962

■ 31.6794, 27.8132,
33.0715

■ 38.9808, 39.6548,
44.0178

■ 28.7407, 23.1570,
28.3274

■ 43.3830, 46.9143,
50.2480

■ 26.2481, 19.2900,
24.0493

■ 48.3107, 55.1121,
57.0006

■ 24.1779, 16.1675,
20.2213

■ 53.7810, 64.2802,
64.2881

■ 22.5042, 13.7403,
16.8262

■ 59.8102, 74.4493,
72.1227

■ 21.1979, 11.9533,
13.8455

■ 66.4141, 85.6484,
80.5162

■ 20.2256, 10.7427,
11.2588

■ 67.8711, 86.4328,
87.5676

■ 19.5462, 10.0293,
9.0425

■ 69.2792, 86.9960,
94.9826

■ 19.2875, 9.7833,
8.1192

■ 70.7655, 87.5905,
102.8094

Harmonies

Analogous

The Analogous color harmony consists of three colors that are next to each other on the color wheel.



34.2410, 33.2982, 43.1376



35.0850, 33.2982, 38.2962



34.9834, 33.2982, 33.3214

Triad

The Triadic color harmony groups three colors that are evenly spaced from another and form a triangle on the color wheel.



35.0850, 33.2982, 38.2962



30.6069, 33.2982, 27.7849



29.4375, 33.2982, 43.9769

Complementary

The Complementary color scheme is a pair of colors which are on the opposite of each other on the color wheel.



35.0850, 33.2982, 38.2962



34.6220, 40.1215, 41.0434

Split Complementary

Split-complementary colors differ from the complementary color scheme. The scheme consists of three colors, the original color and two neighbors of the complement color.



28.5334, 33.2982, 39.3582



35.0850, 33.2982, 38.2962



29.1911, 33.2982, 30.1483

Square

The Square scheme is like the rectangle color scheme, but the four colors are evenly spaced on the color wheel.



35.0850, 33.2982, 38.2962



32.3535, 33.2982, 27.5579



28.4449, 33.2982, 34.2897



30.9547, 33.2982, 46.6153

Rectangle

The Rectangle color scheme consists of four colors that form a rectangle on the color wheel.



35.0850, 33.2982, 38.2962



34.3937, 33.2982, 30.5869



28.4449, 33.2982, 34.2897



29.0543, 33.2982, 42.5858

Sweetspot

The Sweet Spot groups the original color and five complimentary colors.



35.0860, 33.2997, 38.2969



70.8868, 72.2306, 80.1056



33.8641, 32.5077, 45.5646



15.2508, 15.4706, 17.1995



84.5950, 89.0005, 96.9216



16.2198, 17.0645, 18.5832

Same Dimension

The Same Dimension uses a secret algorithm to generate beautiful new colors.



35.0860, 33.2997, 38.2969



61.7039, 57.2709, 66.5439



34.2928, 33.3261, 33.0607



8.6480, 8.5659, 9.6450



14.1799, 7.1895, 6.1075



0.4757, 0.2380, 0.3476

Inverse Universe

The Inverse Universe completely reimagines the original color for something new.



35.0860, 33.2997, 38.2969



61.7039, 57.2709, 66.5439



35.4939, 40.0489, 46.9344



8.6480, 8.5659, 9.6450



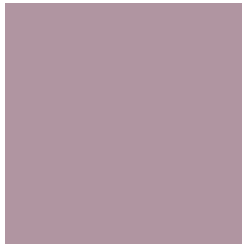
14.1799, 7.1895, 6.1075



0.4757, 0.2380, 0.3476

Previews

White Background



This preview shows how the XYZ color 35.0850, 33.2982, 38.2962 looks on a white background.

Color Contrast Check

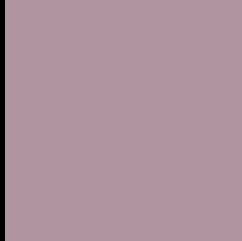
Large Text (above 18pt) WCAG AA × Fail

Any Text WCAG AA × Fail

Large Text (above 18pt) WCAG AAA × Fail

Any Text WCAG AAA × Fail

Black Background



This preview shows how the XYZ color 35.0850, 33.2982, 38.2962 looks on a black background.

Color Contrast Check

Large Text (above 18pt) WCAG AA ✓ Pass

Any Text WCAG AA ✓ Pass

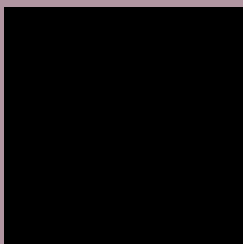
Large Text (above 18pt) WCAG AAA ✓ Pass

Any Text WCAG AAA ✓ Pass

If you want to check with other color combinations, try the [Color Contrast Checker](#).

XYZ 35.0850, 33.2982, 38.2962

Background



This preview shows how black text looks on a background with the XYZ color 35.0850, 33.2982, 38.2962.



This preview shows how white text looks on a background with the XYZ color 35.0850, 33.2982,

Color Blindness Simulation

Color vision deficiency is a very complex topic, and I could not describe the different causes any better than Wikipedia does, so if you want to learn more, you should check out their [article about color blindness](#).

Dichromacy



Original Color

35.0850, 33.2982, 38.2962

Protanopia

32.4175, 33.3274, 40.3216

Deuteranopia

33.8618, 33.1414, 38.3304



Tritanopia

35.0850, 33.2982, 38.2962

Trichromacy



Original Color

35.0850, 33.2982, 38.2962

Protanomaly

33.4019, 33.3553, 39.7997

Deuteranomaly

34.3526, 33.1566, 38.3075

Tritanomaly

35.0850, 33.2982, 38.2962

Monochromacy



Original Color

35.0850, 33.2982, 38.2962

Achromatopsia

32.4990, 34.1914, 37.2345

Achromatomaly

33.4964, 33.9452, 37.5875

CSS Examples

Text

The CSS property to change the color of the text to XYZ 35.0850, 33.2982, 38.2962 is called "color". The color property can be set on classes, ids or directly on the HTML element.

This example shows how text in the color `rgb(176, 149, 161)` looks like.

```
.text, #text, p{  
    color:rgb(176, 149, 161)  
}
```

If you want to add a text shadow in that color use the text-shadow property, you can generate a text shadow directly with our [CSS Text Shadow Generator](#).

Here you see how black text with a 4 pixel rgb(176, 149, 161) colored shadow looks like.

```
.shadow{ text-shadow: 4px 4px 2px rgb(176, 149, 161) }
```

Border

The CSS property to change the border of an element to XYZ 35.0850, 33.2982, 38.2962 is called "border". The border property can be set on classes, ids or directly on the HTML element.

This example shows the color as border, it can be applied via the CSS property "border" or "border-color".

```
.border, #border, table{ border:4px solid rgb(176, 149, 161) }
```


If only the border color should be changed use the property `border-color`.

```
.border{ border-color:rgb(176, 149, 161) }
```

If you want to add a box shadow in that color use:

Here you see how a box with a 4 pixel `rgb(176, 149, 161)` colored shadow looks like.

```
.boxshadow{ -moz-box-shadow:4px 4px 4px  
4px rgb(176, 149, 161); -webkit-box-  
shadow:4px 4px 4px 4px rgb(176, 149, 161);  
box-shadow:4px 4px 4px 4px rgb(176, 149,  
161) }
```

Background

The CSS property to change the background color of an element to XYZ 35.0850, 33.2982, 38.2962 is called "background". The background property can be set on classes, ids or directly on the HTML element.

```
.background, #background, body{  
background: rgb(176, 149, 161) }
```

If only the background color should be changed can be used:

```
.background{ background-color: rgb(176,  
149, 161) }
```

This example shows the color as background, it is applied via the CSS property "background".

To optimize and compress your CSS code, you can use our [online CSS compressor and optimizer](#) based on csstidy. If you want to create a linear or radial gradient as background or border, check our [CSS Gradient Generator](#).

Hey! You found this booklet interesting? Support Converting Colors with the new Membership Option!

The pro membership hides all ads, plus gives you double the colors in the color bucket, and more awesome pro features!

[Learn more, Memberships starting at \\$2.50/m!](#)

**Follow me
on Twitter!**

@ConvertingColor