

Converting Colors

XYZ(35.1925, 35.9533, 42.6153)

Have a look what the booklet for
XYZ(35.1925, 35.9533, 42.6153)
contains.

XYZ(35.2493, 36.0055, 42.6280)	3
<i>Conversions</i>	4
<i>Details</i>	6
<i>Harmonies</i>	12
<i>Previews</i>	24
<i>Color Blindness Simulation</i>	28
<i>CSS Examples</i>	31

Color

**XYZ(35.2493, 36.0055,
42.6280)**

Conversions

Conversions Part 1

Format	Color
Hex	A5A0A9
RGB	165, 160, 169
RGB Percent	65%, 63%, 66%
CMY	0.3529, 0.3725, 0.3373
CMYK	0.02, 0.05, 0.00, 0.34
HSL	273°, 5%, 65%
HSV	273°, 5%, 66%
XYZ	35.2493, 36.0055, 42.6280
YIQ	162.5210, 0.0910, 3.8590

Conversions

Conversions Part 2

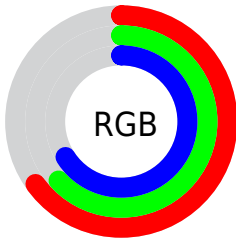
Format	Color
R_{YB}	165, 160, 169
Decimal	10854569
CIE _{Lab}	66.52, 3.52, -4.03
CIE _{LCh}	67, 5.351, 311.184
Yxy	36.0055, 0.3095, 0.3162
Android (android.graphics.Color)	4289044649 (0xFFA5A0A9)
YUV	162.5210, 3.1941, 2.1741
Hunter-Lab	60.0046, -0.1494, -0.1171

Details

The XYZ color **35.2493, 36.0055, 42.6280** is a light color, and the websafe version is hex **999999**. A complement of this color would be **35.8442, 38.8074, 38.8609**, and the grayscale version is **34.5734, 36.3739, 39.6112**.

A 20% lighter version of the original color is **67.2702, 69.1983, 80.3321**, and **15.4896, 15.7323, 19.0499** is the 20% darker color. If you saturate the color by 10%, you get **30.9997, 29.7580, 41.6466**, and if you desaturate by 10%, it is **39.9911, 43.0999, 43.7480**.

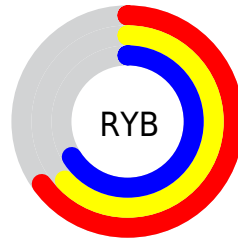
Distribution



Red (65%)

Green (63%)

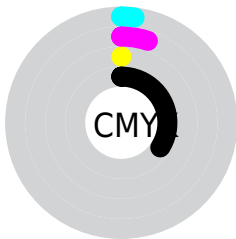
Blue (66%)



Red (65%)

Yellow (63%)

Blue (66%)

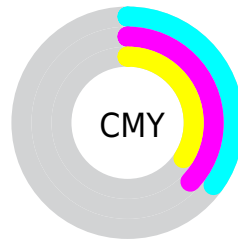


Cyan (2%)

Magenta (5%)

Yellow (0%)

Black (34%)



Cyan (35%)

Magenta (37%)

Yellow (34%)

Brightness & Saturation Gradients

These gradients show how the XYZ color 35.2493, 36.0055, 42.6280 changes by changing the brightness by 10 percent. The first figure shows a shift by +10% for each color and the second figure -10%.

Similar to the brightness gradients but the following saturation gradients show a change of the XYZ color 35.2493, 36.0055, 42.6280 by changing the saturation by 10% instead.

■ 35.2493, 36.0055,
42.6280

■ 35.2493, 36.0055,
42.6280

317.1561,
328.9846, 372.9558

■ 24.0224, 24.4384,
29.2641

■ 67.2033, 69.0406,
80.4295

■ 15.4751, 15.6592,
19.0334

■ 88.6610, 91.2773,
105.7042

■ 9.2419, 9.2833,
11.5174

114.2598,
117.8395, 135.7863

■ 4.9577, 4.9264,
6.2974

144.3650,
149.1114, 171.0943

■ 2.2570, 2.2042,
2.9551

179.3418,
185.4775, 212.0466

■ 0.7725, 0.7223,
1.0717

219.5557,

■ 0.0000, 0.0000,

227.3221, 259.0620

0.0000

265.3720,
275.0297, 312.5589

■ 35.2493, 36.0055,
42.6280

■ 35.2493, 36.0055,
42.6280

■ 30.9997, 29.7580,
41.6466

■ 39.9911, 43.0999,
43.7480

■ 27.2216, 24.3202,
40.7962

■ 45.2384, 51.0676,
45.0093

■ 23.8975, 19.6586,
40.0716

■ 51.0083, 59.9393,
46.4176

■ 21.0073, 15.7357,
39.4667

■ 57.3155, 69.7431,
47.9775

■ 18.5295, 12.5110,
38.9749

■ 64.1747, 80.5056,
49.6934

■ 16.4404, 9.9396,
38.5886

■ 69.5223, 88.0978,
50.8770

■ 14.7135, 7.9713,
38.2998

■ 71.7129, 89.2271,
50.9795

■ 13.3187, 6.5486,
38.0987

■ 74.0054, 90.4089,
51.0868

■ 12.2183, 5.5988,
37.9733

■ 76.4010, 91.6439,
51.1989

Harmonies

Analogous

The Analogous color harmony consists of three colors that are next to each other on the color wheel.



34.5226, 36.0055, 43.7053



35.2493, 36.0055, 42.6280



35.7050, 36.0055, 40.6479

Triad

The Triadic color harmony groups three colors that are evenly spaced from another and form a triangle on the color wheel.



35.2493, 36.0055, 42.6280



34.7227, 36.0055, 35.1641



32.7292, 36.0055, 40.0681

Complementary

The Complementary color scheme is a pair of colors which are on the opposite of each other on the color wheel.



35.2493, 36.0055, 42.6280



35.8442, 38.8074, 38.8609

Split Complementary

Split-complementary colors differ from the complementary color scheme. The scheme consists of three colors, the original color and two neighbors of the complement color.



32.7809, 36.0055, 37.7945



35.2493, 36.0055, 42.6280



33.9234, 36.0055, 35.0226

Square

The Square scheme is like the rectangle color scheme, but the four colors are evenly spaced on the color wheel.



35.2493, 36.0055, 42.6280



35.3978, 36.0055, 36.3627



33.2151, 36.0055, 35.9682



33.0729, 36.0055, 42.1893

Rectangle

The Rectangle color scheme consists of four colors that form a rectangle on the color wheel.



35.2493, 36.0055, 42.6280



35.7897, 36.0055, 39.1125



33.2151, 36.0055, 35.9682



32.7011, 36.0055, 39.2954

Sweetspot

The Sweet Spot groups the original color and five complimentary colors.



35.2503, 36.0070, 42.6288



65.8238, 68.4928, 76.9762



34.9444, 36.9083, 42.8189



14.3677, 14.9598, 16.7824



80.6108, 84.8088, 92.3568



14.7206, 15.4872, 16.8656

Same Dimension

The Same Dimension uses a secret algorithm to generate beautiful new colors.



35.2503, 36.0070, 42.6288



62.5027, 63.5549, 76.1982



36.0532, 36.4258, 42.4463



7.7880, 7.9011, 9.5329



8.8303, 3.9356, 28.2697



0.2723, 0.1254, 0.6905

Inverse Universe

The Inverse Universe completely reimagines the original color for something new.



35.6350, 36.2585, 40.2441



63.2918, 64.0707, 71.3127



35.0711, 38.4043, 39.0305



7.8931, 7.9697, 8.8829



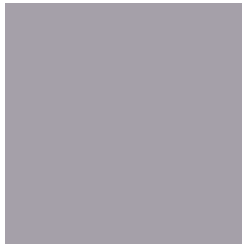
13.1706, 6.6770, 5.7101



0.3464, 0.1728, 0.2755

Previews

White Background



This preview shows how the XYZ color 35.2493, 36.0055, 42.6280 looks on a white background.

Color Contrast Check

Large Text (above 18pt) WCAG AA × Fail

Any Text WCAG AA × Fail

Large Text (above 18pt) WCAG AAA × Fail

Any Text WCAG AAA × Fail

Black Background



This preview shows how the XYZ color 35.2493, 36.0055, 42.6280 looks on a black background.

Color Contrast Check

Large Text (above 18pt) WCAG AA ✓ Pass

Any Text WCAG AA ✓ Pass

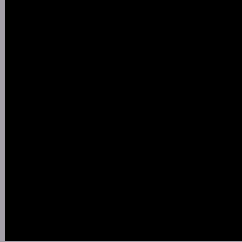
Large Text (above 18pt) WCAG AAA ✓ Pass

Any Text WCAG AAA ✓ Pass

If you want to check with other color combinations, try the [Color Contrast Checker](#).

XYZ 35.2493, 36.0055, 42.6280

Background



This preview shows how black text looks on a background with the XYZ color 35.2493, 36.0055, 42.6280.



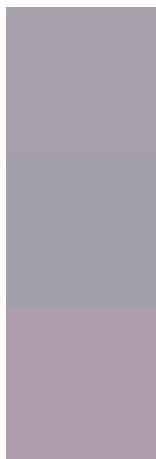
This preview shows how white text looks on a background with the XYZ color 35.2493, 36.0055,

42.6280.

Color Blindness Simulation

Color vision deficiency is a very complex topic, and I could not describe the different causes any better than Wikipedia does, so if you want to learn more, you should check out their [article about color blindness](#).

Dichromacy



Original Color

35.2493, 36.0055, 42.6280

Protanopia

34.8066, 36.0357, 42.6572

Deuteranopia

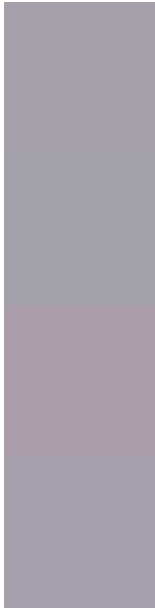
36.7682, 36.0149, 43.0439



Tritanopia

35.5342, 36.1195, 44.1286

Trichromacy



Original Color

35.2493, 36.0055, 42.6280

Protanomaly

35.0106, 36.1408, 42.6667

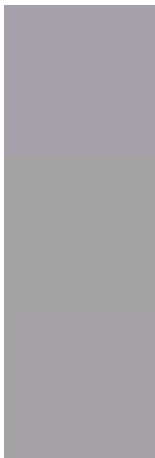
Deuteranomaly

36.2771, 36.0139, 43.0696

Tritanomaly

35.4385, 36.0812, 43.6246

Monochromacy



Original Color

35.2493, 36.0055, 42.6280

Achromatopsia

34.8123, 36.6253, 39.8849

Achromatomaly

35.0217, 36.4498, 40.7870

CSS Examples

Text

The CSS property to change the color of the text to XYZ 35.2493, 36.0055, 42.6280 is called "color". The color property can be set on classes, ids or directly on the HTML element.

This example shows how text in the color `rgb(165, 160, 169)` looks like.

```
.text, #text, p{  
    color:rgb(165, 160, 169)  
}
```

If you want to add a text shadow in that color use the text-shadow property, you can generate a text shadow directly with our [CSS Text Shadow Generator](#).

Here you see how black text with a 4 pixel rgb(165, 160, 169) colored shadow looks like.

```
.shadow{ text-shadow: 4px 4px 2px rgb(165, 160, 169) }
```

Border

The CSS property to change the border of an element to XYZ 35.2493, 36.0055, 42.6280 is called "border". The border property can be set on classes, ids or directly on the HTML element.

This example shows the color as border, it can be applied via the CSS property "border" or "border-color".

```
.border, #border, table{ border:4px solid rgb(165, 160, 169) }
```


If only the border color should be changed use the property `border-color`.

```
.border{ border-color:rgb(165, 160, 169) }
```

If you want to add a box shadow in that color use:

Here you see how a box with a 4 pixel `rgb(165, 160, 169)` colored shadow looks like.

```
.boxshadow{ -moz-box-shadow:4px 4px 4px  
4px rgb(165, 160, 169); -webkit-box-  
shadow:4px 4px 4px 4px rgb(165, 160, 169);  
box-shadow:4px 4px 4px 4px rgb(165, 160,  
169) }
```

Background

The CSS property to change the background color of an element to XYZ 35.2493, 36.0055, 42.6280 is called "background". The background property can be set on classes, ids or directly on the HTML element.

```
.background, #background, body{  
background: rgb(165, 160, 169) }
```

If only the background color should be changed can be used:

```
.background{ background-color: rgb(165,  
160, 169) }
```

This example shows the color as background, it is applied via the CSS property "background".

To optimize and compress your CSS code, you can use our [online CSS compressor and optimizer](#) based on csstidy. If you want to create a linear or radial gradient as background or border, check our [CSS Gradient Generator](#).

Hey! You found this booklet interesting? Support Converting Colors with the new Membership Option!

The pro membership hides all ads, plus gives you double the colors in the color bucket, and more awesome pro features!

[Learn more, Memberships starting at \\$2.50/m!](#)

**Follow me
on Twitter!**

@ConvertingColor