

Converting Colors

XYZ(35.2433, 33.9526, 37.3625)

Have a look what the booklet for
XYZ(35.2433, 33.9526, 37.3625)
contains.

XYZ(35.2291, 33.8665, 37.4810)	3
<i>Conversions</i>	4
<i>Details</i>	6
<i>Harmonies</i>	12
<i>Previews</i>	24
<i>Color Blindness Simulation</i>	28
<i>CSS Examples</i>	31

Color

**XYZ(35.2291, 33.8665,
37.4810)**

Conversions

Conversions Part 1

Format	Color
Hex	B0979F
RGB	176, 151, 159
RGB Percent	69%, 59%, 62%
CMY	0.3098, 0.4078, 0.3765
CMYK	0.00, 0.14, 0.10, 0.31
HSL	341°, 14%, 64%
HSV	341°, 14%, 69%
XYZ	35.2291, 33.8665, 37.4810
YIQ	159.3870, 12.3320, 7.7880

Conversions

Conversions Part 2

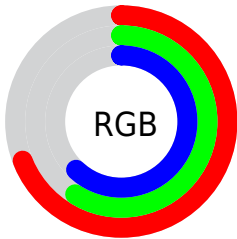
Format	Color
RYB	176, 151, 159
Decimal	11573151
CIELab	64.86, 10.64, -0.76
CIELCh	65, 10.670, 355.917
Yxy	33.8665, 0.3306, 0.3178
Android (android.graphics.Color)	4289763231 (0xFFB0979F)
YUV	159.3870, -0.1908, 14.5696
Hunter-Lab	58.1949, 6.2163, 2.5502

Details

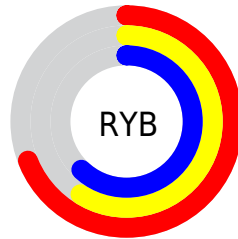
The XYZ color **35.2291, 33.8665, 37.4810** is a light color, and the websafe version is hex **999999**. A complement of this color would be **35.3570, 40.4580, 42.9934**, and the grayscale version is **33.1295, 34.8548, 37.9569**.

A 20% lighter version of the original color is **67.2476, 65.6735, 72.7502**, and **15.4323, 14.4080, 16.1550** is the 20% darker color. If you saturate the color by 10%, you get **31.6166, 28.2237, 31.3981**, and if you desaturate by 10%, it is **39.3670, 40.3983, 44.2361**.

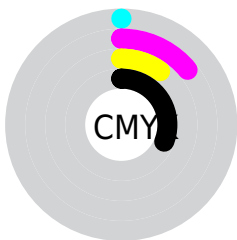
Distribution



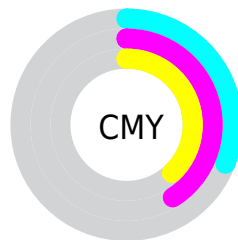
- Red (69%)
- Green (59%)
- Blue (62%)



- Red (69%)
- Yellow (59%)
- Blue (62%)



- Cyan (0%)
- Magenta (14%)
- Yellow (10%)
- Black (31%)



- Cyan (31%)
- Magenta (41%)
- Yellow (38%)

Brightness & Saturation Gradients

These gradients show how the XYZ color 35.2291, 33.8665, 37.4810 changes by changing the brightness by 10 percent. The first figure shows a shift by +10% for each color and the second figure -10%.

Similar to the brightness gradients but the following saturation gradients show a change of the XYZ color 35.2291, 33.8665, 37.4810 by changing the saturation by 10% instead.

■ 35.2291, 33.8665,
37.4810

■ 35.2291, 33.8665,
37.4810

317.0687,
319.5364, 350.6195

■ 24.0067, 22.7911,
25.2814

■ 67.1722, 65.7260,
72.5065

■ 15.4634, 14.4393,
16.0659

■ 88.6237, 87.2789,
96.1695

■ 9.2337, 8.4268,
9.4160

114.2156,
113.0930, 124.4908

■ 4.9522, 4.3693,
4.9130

144.3132,
143.5528, 157.8888

■ 2.2537, 1.8822,
2.1384

179.2820,
179.0426, 196.7822

■ 0.7708, 0.5376,
0.6385

219.4873,

■ 0.0000, 0.0000,

219.9469, 241.5894

0.0000

265.2944,
266.6500, 292.7290

■ 35.2291, 33.8665,
37.4810

■ 35.2291, 33.8665,
37.4810

■ 31.6166, 28.2237,
31.3981

■ 39.3670, 40.3983,
44.2361

■ 28.5050, 23.4269,
25.9640

■ 44.0477, 47.8506,
51.6816

■ 25.8724, 19.4362,
21.1572

■ 49.2912, 56.2590,
59.8373

■ 23.6938, 16.2068,
16.9539

■ 55.1158, 65.6560,
68.7219

■ 21.9419, 13.6894,
13.3288

■ 61.5388, 76.0724,
78.3533

■ 20.5864, 11.8291,
10.2545

■ 68.0628, 86.5094,
88.5773

■ 19.5927, 10.5624,
7.7013

■ 69.8103, 87.2084,
97.7794

■ 18.9195, 9.8133,
5.6356

■ 71.6756, 87.9546,
107.6020

■ 18.6260, 9.5187,
4.6363

■ 71.7147, 87.9702,
107.8079

Harmonies

Analogous

The Analogous color harmony consists of three colors that are next to each other on the color wheel.



34.7004, 33.8665, 41.8263



35.2291, 33.8665, 37.4810



34.9222, 33.8665, 33.2965

Triad

The Triadic color harmony groups three colors that are evenly spaced from another and form a triangle on the color wheel.



35.2291, 33.8665, 37.4810



30.9141, 33.8665, 29.7714



30.5605, 33.8665, 44.3417

Complementary

The Complementary color scheme is a pair of colors which are on the opposite of each other on the color wheel.



35.2291, 33.8665, 37.4810



35.3570, 40.4580, 42.9934

Split Complementary

Split-complementary colors differ from the complementary color scheme. The scheme consists of three colors, the original color and two neighbors of the complement color.



29.6025, 33.8665, 40.7009



35.2291, 33.8665, 37.4810



29.8020, 33.8665, 32.3305

Square

The Square scheme is like the rectangle color scheme, but the four colors are evenly spaced on the color wheel.



35.2291, 33.8665, 37.4810



32.4000, 33.8665, 29.0575



29.3292, 33.8665, 36.2753



31.9791, 33.8665, 45.9819

Rectangle

The Rectangle color scheme consists of four colors that form a rectangle on the color wheel.



35.2291, 33.8665, 37.4810



34.2901, 33.8665, 31.1208



29.3292, 33.8665, 36.2753



30.1757, 33.8665, 43.2978

Sweetspot

The Sweet Spot groups the original color and five complimentary colors.



35.2301, 33.8680, 37.4817



71.5041, 73.4365, 80.3997



34.9818, 33.5577, 45.7083



15.3682, 15.7122, 17.2179



84.5950, 89.0005, 96.9216



16.2198, 17.0645, 18.5832

Same Dimension

The Same Dimension uses a secret algorithm to generate beautiful new colors.



35.2301, 33.8680, 37.4817



61.7671, 58.0880, 64.4357



35.2406, 34.9641, 34.1713



8.6047, 8.5486, 9.4167



13.6901, 6.9936, 3.5283



0.4580, 0.2310, 0.2547

Inverse Universe

The Inverse Universe completely reimagines the original color for something new.



35.2301, 33.8680, 37.4817



61.7671, 58.0880, 64.4357



35.3209, 39.1565, 46.7711



8.6047, 8.5486, 9.4167



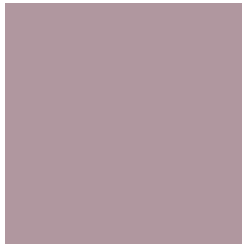
13.6901, 6.9936, 3.5283



0.4580, 0.2310, 0.2547

Previews

White Background



This preview shows how the XYZ color 35.2291, 33.8665, 37.4810 looks on a white background.

Color Contrast Check

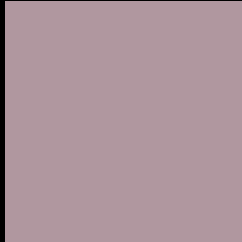
Large Text (above 18pt) WCAG AA × Fail

Any Text WCAG AA × Fail

Large Text (above 18pt) WCAG AAA × Fail

Any Text WCAG AAA × Fail

Black Background



This preview shows how the XYZ color 35.2291, 33.8665, 37.4810 looks on a black background.

Color Contrast Check

Large Text (above 18pt) WCAG AA ✓ Pass

Any Text WCAG AA ✓ Pass

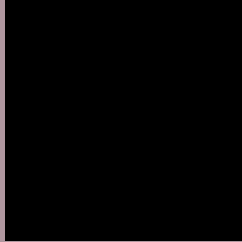
Large Text (above 18pt) WCAG AAA ✓ Pass

Any Text WCAG AAA ✓ Pass

If you want to check with other color combinations, try the [Color Contrast Checker](#).

XYZ 35.2291, 33.8665, 37.4810

Background



This preview shows how black text looks on a background with the XYZ color 35.2291, 33.8665, 37.4810.



This preview shows how white text looks on a background with the XYZ color 35.2291, 33.8665,

37.4810.

Color Blindness Simulation

Color vision deficiency is a very complex topic, and I could not describe the different causes any better than Wikipedia does, so if you want to learn more, you should check out their [article about color blindness](#).

Dichromacy



Original Color

35.2291, 33.8665, 37.4810

Protanopia

32.8766, 34.0935, 39.0303

Deuteranopia

34.6625, 34.0563, 37.5475



Tritanopia

35.3324, 33.6514, 38.8156

Trichromacy



Original Color

35.2291, 33.8665, 37.4810

Protanomaly

33.6714, 34.0152, 38.5091

Deuteranomaly

34.7198, 33.8439, 37.5035

Tritanomaly

35.2439, 33.6160, 38.3492

Monochromacy



Original Color

35.2291, 33.8665, 37.4810

Achromatopsia

32.9542, 34.6704, 37.7561

Achromatomaly

33.6635, 34.2795, 37.6432

CSS Examples

Text

The CSS property to change the color of the text to XYZ 35.2291, 33.8665, 37.4810 is called "color". The color property can be set on classes, ids or directly on the HTML element.

This example shows how text in the color `rgb(176, 151, 159)` looks like.

```
.text, #text, p{  
    color:rgb(176, 151, 159)  
}
```

If you want to add a text shadow in that color use the text-shadow property, you can generate a text shadow directly with our [CSS Text Shadow Generator](#).

Here you see how black text with a 4 pixel rgb(176, 151, 159) colored shadow looks like.

```
.shadow{ text-shadow: 4px 4px 2px rgb(176, 151, 159) }
```

Border

The CSS property to change the border of an element to XYZ 35.2291, 33.8665, 37.4810 is called "border". The border property can be set on classes, ids or directly on the HTML element.

This example shows the color as border, it can be applied via the CSS property "border" or "border-color".

```
.border, #border, table{ border:4px solid rgb(176, 151, 159) }
```


If only the border color should be changed use the property `border-color`.

```
.border{ border-color:rgb(176, 151, 159) }
```

If you want to add a box shadow in that color use:

Here you see how a box with a 4 pixel `rgb(176, 151, 159)` colored shadow looks like.

```
.boxshadow{ -moz-box-shadow:4px 4px 4px  
4px rgb(176, 151, 159); -webkit-box-  
shadow:4px 4px 4px 4px rgb(176, 151, 159);  
box-shadow:4px 4px 4px 4px rgb(176, 151,  
159) }
```

Background

The CSS property to change the background color of an element to XYZ 35.2291, 33.8665, 37.4810 is called "background". The background property can be set on classes, ids or directly on the HTML element.

```
.background, #background, body{  
background: rgb(176, 151, 159) }
```

If only the background color should be changed can be used:

```
.background{ background-color: rgb(176,  
151, 159) }
```

This example shows the color as background, it is applied via the CSS property "background".

To optimize and compress your CSS code, you can use our [online CSS compressor and optimizer](#) based on csstidy. If you want to create a linear or radial gradient as background or border, check our [CSS Gradient Generator](#).

Hey! You found this booklet interesting? Support Converting Colors with the new Membership Option!

The pro membership hides all ads, plus gives you double the colors in the color bucket, and more awesome pro features!

[Learn more, Memberships starting at \\$2.50/m!](#)

**Follow me
on Twitter!**

@ConvertingColor