

Converting Colors

XYZ(35.2610, 34.7143, 32.8590)

Have a look what the booklet for
XYZ(35.2610, 34.7143, 32.8590)
contains.

XYZ(35.2610, 34.7143, 32.8590)	3
<i>Conversions</i>	4
<i>Details</i>	6
<i>Harmonies</i>	12
<i>Previews</i>	24
<i>Color Blindness Simulation</i>	28
<i>CSS Examples</i>	31

Color

**XYZ(35.2610, 34.7143,
32.8590)**

Conversions

Conversions Part 1

Format	Color
Hex	B29A94
RGB	178, 154, 148
RGB Percent	70%, 60%, 58%
CMY	0.3020, 0.3961, 0.4196
CMYK	0.00, 0.13, 0.17, 0.30
HSL	12°, 16%, 64%
HSV	12°, 17%, 70%
XYZ	35.2610, 34.7143, 32.8590
YIQ	160.4920, 16.2300, 3.2220

Conversions

Conversions Part 2

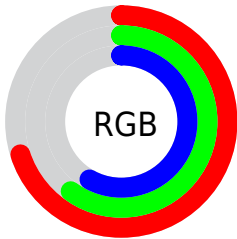
Format	Color
RYB	178, 156, 148
Decimal	11704980
CIELab	65.53, 7.87, 6.41
CIELCh	66, 10.148, 39.172
Yxy	34.7143, 0.3429, 0.3376
Android (android.graphics.Color)	4289895060 (0xFFB29A94)
YUV	160.4920, -6.1586, 15.3545
Hunter-Lab	58.9188, 3.7184, 8.1772

Details

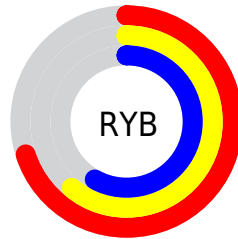
The XYZ color **35.2610, 34.7143, 32.8590** is a light color, and the websafe version is hex **999999**. A complement of this color would be **35.0009, 39.0144, 47.8056**, and the grayscale version is **33.6639, 35.4170, 38.5692**.

A 20% lighter version of the original color is **67.1482, 66.8684, 65.2449**, and **15.4654, 14.9235, 13.3747** is the 20% darker color. If you saturate the color by 10%, you get **31.7470, 29.7701, 25.2629**, and if you desaturate by 10%, it is **39.2724, 40.3058, 41.6907**.

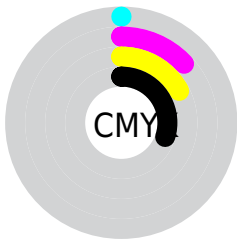
Distribution



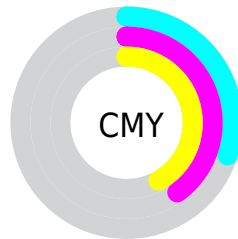
- Red (70%)
- Green (60%)
- Blue (58%)



- Red (70%)
- Yellow (61%)
- Blue (58%)



- Cyan (0%)
- Magenta (13%)
- Yellow (17%)
- Black (30%)



- Cyan (30%)
- Magenta (40%)
- Yellow (42%)

Brightness & Saturation Gradients

These gradients show how the XYZ color 35.2610, 34.7143, 32.8590 changes by changing the brightness by 10 percent. The first figure shows a shift by +10% for each color and the second figure -10%.

Similar to the brightness gradients but the following saturation gradients show a change of the XYZ color 35.2610, 34.7143, 32.8590 by changing the saturation by 10% instead.

■ 35.2610, 34.7143,
32.8590

■ 35.2610, 34.7143,
32.8590

317.2067,
323.3055, 329.6264

■ 24.0315, 23.4429,
21.7482

■ 67.2213, 67.0429,
65.2688

■ 15.4818, 14.9209,
13.4755

■ 88.6827, 88.8689,
87.4049

■ 9.2467, 8.7639,
7.6222

114.2854,
114.9819, 114.0532

■ 4.9609, 4.5875,
3.7699

144.3949,
145.7663, 145.6322

■ 2.2588, 2.0073,
1.5000

179.3764,
181.6064, 182.5605

■ 0.7735, 0.6117,
0.2179

219.5953,

■ 0.0000, 0.0000,

222.8868, 225.2566

0.0000

265.4170,
269.9916, 274.1391

■ 35.2610, 34.7143,
32.8590

■ 35.2610, 34.7143,
32.8590

■ 31.7470, 29.7701,
25.2629

■ 39.2724, 40.3058,
41.6907

■ 28.7079, 25.4452,
18.8449

■ 43.7967, 46.5621,
51.8076

■ 26.1239, 21.7164,
13.5464

■ 48.8525, 53.5058,
63.2590

■ 23.9723, 18.5571,
9.3028

■ 54.4564, 61.1570,
76.0912

■ 22.2287, 15.9390,
6.0427

■ 60.6243, 69.5352,
90.3482

■ 20.8661, 13.8309,
3.6861

■ 67.3716, 78.6588,
106.0720

■ 19.8539, 12.1985,
2.1399

■ 71.7476, 87.3597,
107.6884

■ 19.1531, 11.0017,
1.2749

■ 72.1702, 88.2051,
107.8292

■ 18.9797, 10.7040,
1.0657

Harmonies

Analogous

The Analogous color harmony consists of three colors that are next to each other on the color wheel.



35.8982, 34.7143, 36.5079



35.2610, 34.7143, 32.8590



34.0218, 34.7143, 30.6509

Triad

The Triadic color harmony groups three colors that are evenly spaced from another and form a triangle on the color wheel.



35.2610, 34.7143, 32.8590



30.3946, 34.7143, 34.9612



33.4527, 34.7143, 46.4698

Complementary

The Complementary color scheme is a pair of colors which are on the opposite of each other on the color wheel.



35.2610, 34.7143, 32.8590



35.0009, 39.0144, 47.8056

Split Complementary

Split-complementary colors differ from the complementary color scheme. The scheme consists of three colors, the original color and two neighbors of the complement color.



31.9889, 34.7143, 45.9777



35.2610, 34.7143, 32.8590



30.2526, 34.7143, 39.1181

Square

The Square scheme is like the rectangle color scheme, but the four colors are evenly spaced on the color wheel.



35.2610, 34.7143, 32.8590



31.2220, 34.7143, 31.7998



30.8280, 34.7143, 43.2086



34.8337, 34.7143, 44.5066

Rectangle

The Rectangle color scheme consists of four colors that form a rectangle on the color wheel.



35.2610, 34.7143, 32.8590



33.0362, 34.7143, 30.1888



30.8280, 34.7143, 43.2086



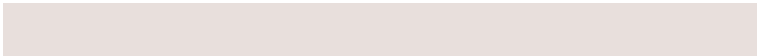
32.9536, 34.7143, 46.5890

Sweetspot

The Sweet Spot groups the original color and five complimentary colors.



35.2619, 34.7159, 32.8597



72.5987, 75.0074, 78.6728



36.3968, 33.6238, 43.6018



15.9631, 16.4500, 17.1606



86.6293, 91.1408, 99.2523



17.0014, 17.8868, 19.4787

Same Dimension

The Same Dimension uses a secret algorithm to generate beautiful new colors.



35.2619, 34.7159, 32.8597



61.6185, 59.6917, 54.5280



37.8937, 39.9794, 33.7370



8.6295, 8.7716, 8.8908



13.6169, 7.7324, 0.7748



0.4687, 0.3239, 0.0378

Inverse Universe

The Inverse Universe completely reimagines the original color for something new.



35.0009, 39.0144, 47.8056



61.0592, 68.8717, 86.4566



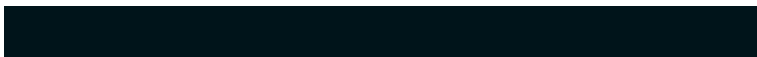
32.3060, 33.6246, 46.9073



8.5954, 9.3369, 10.8555



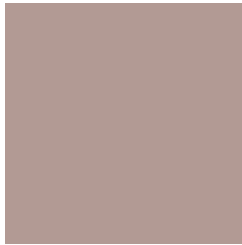
12.7564, 16.3131, 32.6134



0.4381, 0.5868, 1.0384

Previews

White Background



This preview shows how the XYZ color 35.2610, 34.7143, 32.8590 looks on a white background.

Color Contrast Check

Large Text (above 18pt) WCAG AA × Fail

Any Text WCAG AA × Fail

Large Text (above 18pt) WCAG AAA × Fail

Any Text WCAG AAA × Fail

Black Background



This preview shows how the XYZ color 35.2610, 34.7143, 32.8590 looks on a black background.

Color Contrast Check

Large Text (above 18pt) WCAG AA ✓ Pass

Any Text WCAG AA ✓ Pass

Large Text (above 18pt) WCAG AAA ✓ Pass

Any Text WCAG AAA ✓ Pass

If you want to check with other color combinations, try the [Color Contrast Checker](#).

XYZ 35.2610, 34.7143, 32.8590

Background



This preview shows how black text looks on a background with the XYZ color 35.2610, 34.7143, 32.8590.



This preview shows how white text looks on a background with the XYZ color 35.2610, 34.7143,

Color Blindness Simulation

Color vision deficiency is a very complex topic, and I could not describe the different causes any better than Wikipedia does, so if you want to learn more, you should check out their [article about color blindness](#).

Dichromacy



Original Color

35.2610, 34.7143, 32.8590

Protanopia

33.2130, 34.8908, 33.8382

Deuteranopia

35.4913, 34.8330, 32.8698



Tritanopia

36.6615, 34.8041, 39.4359

Trichromacy



Original Color

35.2610, 34.7143, 32.8590

Protanomaly

33.8440, 34.7189, 33.3514

Deuteranomaly

35.4913, 34.8330, 32.8698

Tritanomaly

36.1532, 34.8348, 37.1661

Monochromacy



Original Color

35.2610, 34.7143, 32.8590

Achromatopsia

33.4132, 35.1533, 38.2819

Achromatomaly

34.1640, 35.0695, 36.4209

CSS Examples

Text

The CSS property to change the color of the text to XYZ 35.2610, 34.7143, 32.8590 is called "color". The color property can be set on classes, ids or directly on the HTML element.

This example shows how text in the color `rgb(178, 154, 148)` looks like.

```
.text, #text, p{  
    color:rgb(178, 154, 148)  
}
```

If you want to add a text shadow in that color use the text-shadow property, you can generate a text shadow directly with our [CSS Text Shadow Generator](#).

Here you see how black text with a 4 pixel rgb(178, 154, 148) colored shadow looks like.

```
.shadow{ text-shadow: 4px 4px 2px rgb(178, 154, 148) }
```

Border

The CSS property to change the border of an element to XYZ 35.2610, 34.7143, 32.8590 is called "border". The border property can be set on classes, ids or directly on the HTML element.

This example shows the color as border, it can be applied via the CSS property "border" or "border-color".

```
.border, #border, table{ border:4px solid rgb(178, 154, 148) }
```


If only the border color should be changed use the property `border-color`.

```
.border{ border-color:rgb(178, 154, 148) }
```

If you want to add a box shadow in that color use:

Here you see how a box with a 4 pixel `rgb(178, 154, 148)` colored shadow looks like.

```
.boxshadow{ -moz-box-shadow:4px 4px 4px  
4px rgb(178, 154, 148); -webkit-box-  
shadow:4px 4px 4px 4px rgb(178, 154, 148);  
box-shadow:4px 4px 4px 4px rgb(178, 154,  
148) }
```

Background

The CSS property to change the background color of an element to XYZ 35.2610, 34.7143, 32.8590 is called "background". The background property can be set on classes, ids or directly on the HTML element.

```
.background, #background, body{  
background: rgb(178, 154, 148) }
```

If only the background color should be changed can be used:

```
.background{ background-color: rgb(178,  
154, 148) }
```

This example shows the color as background, it is applied via the CSS property "background".

To optimize and compress your CSS code, you can use our [online CSS compressor and optimizer](#) based on csstidy. If you want to create a linear or radial gradient as background or border, check our [CSS Gradient Generator](#).

Hey! You found this booklet interesting? Support Converting Colors with the new Membership Option!

The pro membership hides all ads, plus gives you double the colors in the color bucket, and more awesome pro features!

[Learn more, Memberships starting at \\$2.50/m!](#)

**Follow me
on Twitter!**

@ConvertingColor