

Converting Colors

XYZ(35.2883, 32.7647, 17.3826)

Have a look what the booklet for
XYZ(35.2883, 32.7647, 17.3826)
contains.

XYZ(35.1864, 32.6616, 17.2817)	3
<i>Conversions</i>	4
<i>Details</i>	6
<i>Harmonies</i>	12
<i>Previews</i>	24
<i>Color Blindness Simulation</i>	28
<i>CSS Examples</i>	31

Color

**XYZ(35.1864, 32.6616,
17.2817)**

Conversions

Conversions Part 1

Format	Color
Hex	C49067
RGB	196, 144, 103
RGB Percent	77%, 56%, 40%
CMY	0.2314, 0.4353, 0.5961
CMYK	0.00, 0.27, 0.47, 0.23
HSL	26°, 44%, 59%
HSV	26°, 47%, 77%
XYZ	35.1864, 32.6616, 17.2817
YIQ	154.8740, 44.1530, -1.7270

Conversions

Conversions Part 2

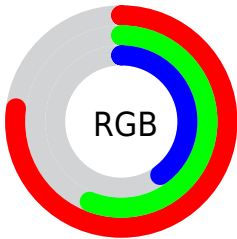
Format	Color
RYB	196, 176, 103
Decimal	12882023
CIELab	63.89, 14.68, 29.45
CIElCh	64, 32.905, 63.502
Yxy	32.6616, 0.4133, 0.3837
Android (android.graphics.Color)	4291072103 (0xFFC49067)
YUV	154.8740, -25.5739, 36.0675
Hunter-Lab	57.1503, 9.8861, 22.0765

Details

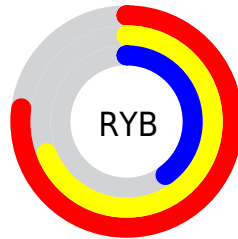
The XYZ color **35.1864, 32.6616, 17.2817** is a light color, and the websafe version is hex **CC9966**. A complement of this color would be **27.2780, 30.3104, 56.6372**, and the grayscale version is **31.1966, 32.8212, 35.7423**.

A 20% lighter version of the original color is **67.3505, 64.0147, 39.8167**, and **15.5075, 13.8567, 5.4717** is the 20% darker color. If you saturate the color by 10%, you get **32.7358, 29.1545, 12.1671**, and if you desaturate by 10%, it is **38.0304, 36.5864, 23.6657**.

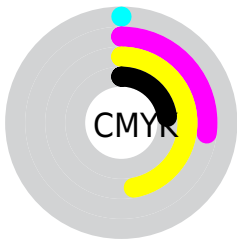
Distribution



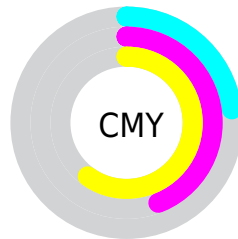
- Red (77%)
- Green (56%)
- Blue (40%)



- Red (77%)
- Yellow (69%)
- Blue (40%)



- Cyan (0%)
- Magenta (27%)
- Yellow (47%)
- Black (23%)





- Cyan (23%)
- Magenta (44%)
- Yellow (60%)

Brightness & Saturation Gradients

These gradients show how the XYZ color 35.1864, 32.6616, 17.2817 changes by changing the brightness by 10 percent. The first figure shows a shift by +10% for each color and the second figure -10%.


Similar to the brightness gradients but the following saturation gradients show a change of the XYZ color 35.1864, 32.6616, 17.2817 by changing the saturation by 10% instead.


 35.1864, 32.6616,
17.2817


 35.1864, 32.6616,
17.2817


316.8839,
314.1221, 248.8892


 23.9737, 21.8673,
10.2715


 67.1066, 63.8468,
39.6068


 15.4387, 13.7595,
5.4714


 88.5447, 85.0066,
55.7586

 9.2162, 7.9536,
2.4629


 114.1220,
110.3903, 75.7948

 4.9407, 4.0652,
0.8204

 144.2039,
140.3824, 100.1339

 2.2469, 1.7101,
0.0000

179.1557,
175.3672, 129.1943

 0.7673, 0.4302,
0.0000

219.3427,

 0.0000, 0.0000,

215.7292, 163.3946

0.0000

265.1303,
261.8527, 203.1534

■ 35.1864, 32.6616,
17.2817

■ 35.1864, 32.6616,
17.2817

■ 32.7358, 29.1545,
12.1671

■ 38.0304, 36.5864,
23.6657

■ 30.6551, 26.0446,
8.2323

■ 41.2845, 40.9387,
31.3965

■ 28.9221, 23.3166,
5.3790

■ 44.9672, 45.7341,
40.5473

■ 27.5099, 20.9518,
3.4915

■ 49.0952, 50.9856,
51.1858

■ 26.3826, 18.9273,
2.4064

■ 53.6841, 56.7058,
63.3749

■ 26.1262, 18.4584,
2.1858

■ 58.7488, 62.9068,
77.1741

■ 64.3035, 69.6000,
92.6397

■ 69.5788, 76.4835,
105.7033

■ 72.7544, 82.8347,
106.7619

Harmonies

Analogous

The Analogous color harmony consists of three colors that are next to each other on the color wheel.



39.0722, 32.6616, 23.2680



35.1864, 32.6616, 17.2817



30.5034, 32.6616, 15.7065

Triad

The Triadic color harmony groups three colors that are evenly spaced from another and form a triangle on the color wheel.



35.1864, 32.6616, 17.2817



22.9811, 32.6616, 37.1426



36.2199, 32.6616, 61.3321

Complementary

The Complementary color scheme is a pair of colors which are on the opposite of each other on the color wheel.



35.1864, 32.6616, 17.2817



27.2780, 30.3104, 56.6372

Split Complementary

Split-complementary colors differ from the complementary color scheme. The scheme consists of three colors, the original color and two neighbors of the complement color.



31.5906, 32.6616, 67.5524



35.1864, 32.6616, 17.2817



24.1983, 32.6616, 51.5682

Square

The Square scheme is like the rectangle color scheme, but the four colors are evenly spaced on the color wheel.



35.1864, 32.6616, 17.2817



23.7408, 32.6616, 25.3599



27.2399, 32.6616, 63.5983



39.7093, 32.6616, 48.1903

Rectangle

The Rectangle color scheme consists of four colors that form a rectangle on the color wheel.



35.1864, 32.6616, 17.2817



27.6284, 32.6616, 16.9359



27.2399, 32.6616, 63.5983



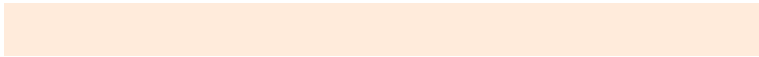
34.7299, 32.6616, 64.4318

Sweetspot

The Sweet Spot groups the original color and five complimentary colors.



35.1872, 32.6632, 17.2823



83.7857, 85.8302, 79.3760



33.5907, 23.8266, 34.1482



17.5938, 17.9362, 16.1227



0.0000, 0.0000, 0.0000



20.3446, 21.4041, 23.3091

Same Dimension

The Same Dimension uses a secret algorithm to generate beautiful new colors.



35.1872, 32.6632, 17.2823



59.1207, 52.5486, 21.6790



43.5833, 49.4553, 20.0810



10.4305, 10.7924, 10.5953



16.8701, 12.0260, 1.4321



0.7975, 0.6567, 0.0847

Inverse Universe

The Inverse Universe completely reimagines the original color for something new.



27.2780, 30.3104, 56.6372



43.0489, 47.7364, 101.5529



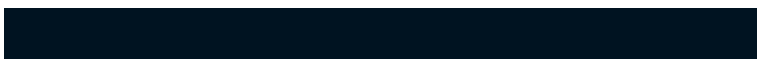
21.0476, 17.8494, 54.5604



9.9849, 10.6610, 12.8164



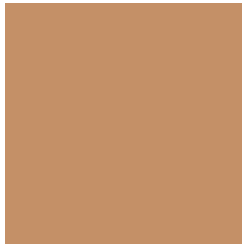
10.0430, 9.8424, 34.9271



0.5017, 0.5608, 1.5317

Previews

White Background



This preview shows how the XYZ color 35.1864, 32.6616, 17.2817 looks on a white background.

Color Contrast Check

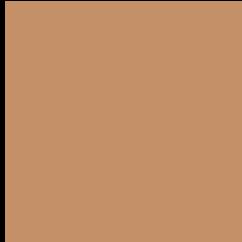
Large Text (above 18pt) WCAG AA × Fail

Any Text WCAG AA × Fail

Large Text (above 18pt) WCAG AAA × Fail

Any Text WCAG AAA × Fail

Black Background



This preview shows how the XYZ color 35.1864, 32.6616, 17.2817 looks on a black background.

Color Contrast Check

Large Text (above 18pt) WCAG AA ✓ Pass

Any Text WCAG AA ✓ Pass

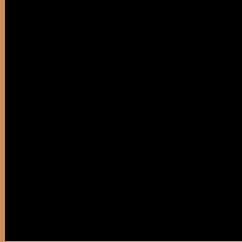
Large Text (above 18pt) WCAG AAA ✓ Pass

Any Text WCAG AAA ✓ Pass

If you want to check with other color combinations, try the [Color Contrast Checker](#).

XYZ 35.1864, 32.6616, 17.2817

Background



This preview shows how black text looks on a background with the XYZ color 35.1864, 32.6616, 17.2817.



This preview shows how white text looks on a background with the XYZ color 35.1864, 32.6616,

Color Blindness Simulation

Color vision deficiency is a very complex topic, and I could not describe the different causes any better than Wikipedia does, so if you want to learn more, you should check out their [article about color blindness](#).

Dichromacy



Original Color

35.1864, 32.6616, 17.2817

Protanopia

30.5766, 32.8502, 18.9165

Deuteranopia

33.2379, 32.5782, 17.1068



Tritanopia

38.3327, 32.6262, 32.7109

Trichromacy



Original Color

35.1864, 32.6616, 17.2817

Protanomaly

32.0282, 32.6388, 18.2475

Deuteranomaly

34.0672, 32.7739, 17.1008

Tritanomaly

37.0961, 32.5642, 26.1601

Monochromacy



Original Color

35.1864, 32.6616, 17.2817

Achromatopsia

31.1553, 32.7778, 35.6950

Achromatomaly

32.0881, 32.4568, 27.8661

CSS Examples

Text

The CSS property to change the color of the text to XYZ 35.1864, 32.6616, 17.2817 is called "color". The color property can be set on classes, ids or directly on the HTML element.

This example shows how text in the color `rgb(196, 144, 103)` looks like.

```
.text, #text, p{  
    color:rgb(196, 144, 103)  
}
```

If you want to add a text shadow in that color use the text-shadow property, you can generate a text shadow directly with our [CSS Text Shadow Generator](#).

Here you see how black text with a 4 pixel rgb(196, 144, 103) colored shadow looks like.

```
.shadow{ text-shadow: 4px 4px 2px rgb(196, 144, 103) }
```

Border

The CSS property to change the border of an element to XYZ 35.1864, 32.6616, 17.2817 is called "border". The border property can be set on classes, ids or directly on the HTML element.

This example shows the color as border, it can be applied via the CSS property "border" or "border-color".

```
.border, #border, table{ border:4px solid rgb(196, 144, 103) }
```


If only the border color should be changed use the property `border-color`.

```
.border{ border-color:rgb(196, 144, 103) }
```

If you want to add a box shadow in that color use:

Here you see how a box with a 4 pixel `rgb(196, 144, 103)` colored shadow looks like.

```
.boxshadow{ -moz-box-shadow:4px 4px 4px  
4px rgb(196, 144, 103); -webkit-box-  
shadow:4px 4px 4px 4px rgb(196, 144, 103);  
box-shadow:4px 4px 4px 4px rgb(196, 144,  
103) }
```

Background

The CSS property to change the background color of an element to XYZ 35.1864, 32.6616, 17.2817 is called "background". The background property can be set on classes, ids or directly on the HTML element.

```
.background, #background, body{  
background: rgb(196, 144, 103) }
```

If only the background color should be changed can be used:

```
.background{ background-color: rgb(196,  
144, 103) }
```

This example shows the color as background, it is applied via the CSS property "background".

To optimize and compress your CSS code, you can use our [online CSS compressor and optimizer](#) based on csstidy. If you want to create a linear or radial gradient as background or border, check our [CSS Gradient Generator](#).

Hey! You found this booklet interesting? Support Converting Colors with the new Membership Option!

The pro membership hides all ads, plus gives you double the colors in the color bucket, and more awesome pro features!

[Learn more, Memberships starting at \\$2.50/m!](#)

**Follow me
on Twitter!**

@ConvertingColor