

Converting Colors

XYZ(35.2904, 33.8209, 28.7151)

Have a look what the booklet for
XYZ(35.2904, 33.8209, 28.7151)
contains.

XYZ(35.2610, 33.8380, 28.7177)	3
<i>Conversions</i>	4
<i>Details</i>	6
<i>Harmonies</i>	12
<i>Previews</i>	24
<i>Color Blindness Simulation</i>	28
<i>CSS Examples</i>	31

Color

**XYZ(35.2610, 33.8380,
28.7177)**

Conversions

Conversions Part 1

Format	Color
Hex	B8968A
RGB	184, 150, 138
RGB Percent	72%, 59%, 54%
CMY	0.2784, 0.4117, 0.4588
CMYK	0.00, 0.18, 0.25, 0.28
HSL	16°, 24%, 63%
HSV	16°, 25%, 72%
XYZ	35.2610, 33.8380, 28.7177
YIQ	158.7980, 24.1160, 3.4760

Conversions

Conversions Part 2

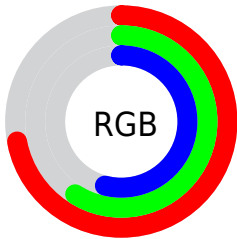
Format	Color
RYB	184, 154, 138
Decimal	12097162
CIELab	64.83, 10.85, 11.11
CIELCh	65, 15.527, 45.675
Yxy	33.8380, 0.3605, 0.3459
Android (android.graphics.Color)	4290287242 (0xFFB8968A)
YUV	158.7980, -10.2534, 22.1022
Hunter-Lab	58.1704, 6.4025, 11.4489

Details

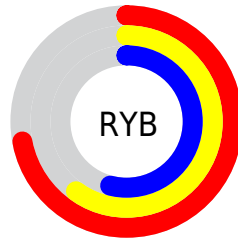
The XYZ color **35.2610, 33.8380, 28.7177** is a light color, and the websafe version is hex **CC9999**. A complement of this color would be **33.8852, 38.3681, 50.9676**, and the grayscale version is **32.9007, 34.6141, 37.6948**.

A 20% lighter version of the original color is **67.2725, 65.6481, 58.4159**, and **15.4292, 14.3741, 11.1938** is the 20% darker color. If you saturate the color by 10%, you get **31.9947, 29.2597, 21.6040**, and if you desaturate by 10%, it is **39.0067, 39.0134, 37.1054**.

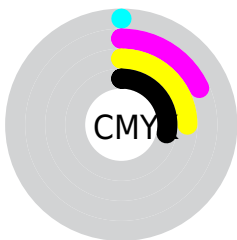
Distribution



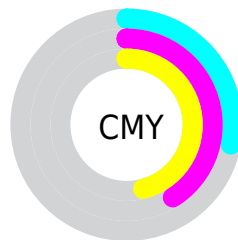
- Red (72%)
- Green (59%)
- Blue (54%)



- Red (72%)
- Yellow (60%)
- Blue (54%)



- Cyan (0%)
- Magenta (18%)
- Yellow (25%)
- Black (28%)





- Cyan (28%)
- Magenta (41%)
- Yellow (46%)

Brightness & Saturation Gradients


These gradients show how the XYZ color 35.2610, 33.8380, 28.7177 changes by changing the brightness by 10 percent. The first figure shows a shift by +10% for each color and the second figure -10%.


Similar to the brightness gradients but the following saturation gradients show a change of the XYZ color 35.2610, 33.8380, 28.7177 by changing the saturation by 10% instead.

 35.2610, 33.8380,
28.7177


 35.2610, 33.8380,
28.7177


317.2067,
319.4091, 309.8998


 24.0315, 22.7692,
18.6236


 67.2213, 65.6817,
58.6651

 15.4818, 14.4232,
11.2246

 88.6827, 87.2253,
79.3555

 9.2467, 8.4156,
6.1020

 114.2854,
113.0293, 104.4151

 4.9609, 4.3620,
2.8374

144.3949,
143.4781, 134.2624

 2.2588, 1.8780,
1.0122

179.3764,
178.9561, 169.3160

 0.7735, 0.5351,
0.0000

219.5953,

 0.0000, 0.0000,

219.8477, 209.9944

0.0000

265.4170,
266.5372, 256.7161

■ 35.2610, 33.8380,
28.7177

■ 35.2610, 33.8380,
28.7177

■ 31.9947, 29.2597,
21.6040

■ 39.0067, 39.0134,
37.1054

■ 29.1852, 25.2521,
15.6995

■ 43.2477, 44.8018,
46.8234

■ 26.8119, 21.7937,
10.9369

■ 48.0028, 51.2243,
57.9272

■ 24.8515, 18.8599,
7.2410

■ 53.2886, 58.2995,
70.4684

■ 23.2786, 16.4239,
4.5281

■ 59.1213, 66.0454,
84.4960

■ 22.0643, 14.4567,
2.7012

■ 65.5162, 74.4790,
100.0568

■ 21.1751, 12.9253,
1.6430

■ 70.5288, 82.8334,
106.8789

■ 20.8248, 12.3055,
1.2776

■ 73.5773, 88.9304,
107.8951

Harmonies

Analogous

The Analogous color harmony consists of three colors that are next to each other on the color wheel.



36.4822, 33.8380, 33.6159



35.2610, 33.8380, 28.7177



33.2377, 33.8380, 26.1538

Triad

The Triadic color harmony groups three colors that are evenly spaced from another and form a triangle on the color wheel.



35.2610, 33.8380, 28.7177



28.1731, 33.8380, 33.8801



33.3378, 33.8380, 50.0177

Complementary

The Complementary color scheme is a pair of colors which are on the opposite of each other on the color wheel.



35.2610, 33.8380, 28.7177



33.8852, 38.3681, 50.9676

Split Complementary

Split-complementary colors differ from the complementary color scheme. The scheme consists of three colors, the original color and two neighbors of the complement color.



31.1098, 33.8380, 50.1098



35.2610, 33.8380, 28.7177



28.1971, 33.8380, 40.2721

Square

The Square scheme is like the rectangle color scheme, but the four colors are evenly spaced on the color wheel.



35.2610, 33.8380, 28.7177



29.1830, 33.8380, 28.8917



29.2501, 33.8380, 46.3743



35.3372, 33.8380, 46.1356

Rectangle

The Rectangle color scheme consists of four colors that form a rectangle on the color wheel.



35.2610, 33.8380, 28.7177



31.7387, 33.8380, 25.8980



29.2501, 33.8380, 46.3743



32.5890, 33.8380, 50.5068

Sweetspot

The Sweet Spot groups the original color and five complimentary colors.



35.2619, 33.8396, 28.7184



76.6931, 78.8983, 80.9429



36.3506, 31.3656, 43.4206



16.4325, 16.8715, 17.2172



88.6918, 93.3107, 101.6153



17.8044, 18.7317, 20.3988

Same Dimension

The Same Dimension uses a secret algorithm to generate beautiful new colors.



35.2619, 33.8396, 28.7184



60.5577, 56.6440, 44.6850



39.2029, 41.7215, 30.0321



9.1901, 9.3831, 9.4337



14.4022, 8.5808, 0.8972



0.5597, 0.4065, 0.0490

Inverse Universe

The Inverse Universe completely reimagines the original color for something new.



33.8852, 38.3681, 50.9676



57.6268, 66.2541, 91.9557



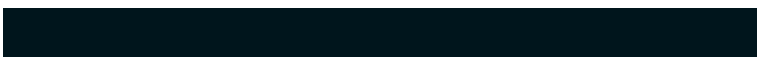
29.9601, 30.5179, 49.6592



9.0630, 9.8032, 11.4940



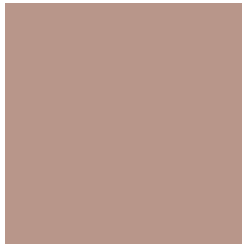
12.0889, 14.6375, 33.4412



0.4734, 0.6106, 1.1946

Previews

White Background



This preview shows how the XYZ color 35.2610, 33.8380, 28.7177 looks on a white background.

Color Contrast Check

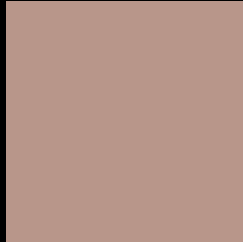
Large Text (above 18pt) WCAG AA × Fail

Any Text WCAG AA × Fail

Large Text (above 18pt) WCAG AAA × Fail

Any Text WCAG AAA × Fail

Black Background



This preview shows how the XYZ color 35.2610, 33.8380, 28.7177 looks on a black background.

Color Contrast Check

Large Text (above 18pt) WCAG AA ✓ Pass

Any Text WCAG AA ✓ Pass

Large Text (above 18pt) WCAG AAA ✓ Pass

Any Text WCAG AAA ✓ Pass

If you want to check with other color combinations, try the [Color Contrast Checker](#).

XYZ 35.2610, 33.8380, 28.7177

Background



This preview shows how black text looks on a background with the XYZ color 35.2610, 33.8380, 28.7177.



This preview shows how white text looks on a background with the XYZ color 35.2610, 33.8380,

Color Blindness Simulation

Color vision deficiency is a very complex topic, and I could not describe the different causes any better than Wikipedia does, so if you want to learn more, you should check out their [article about color blindness](#).

Dichromacy



Original Color

35.2610, 33.8380, 28.7177

Protanopia

32.2493, 33.9594, 30.4463

Deuteranopia

34.6381, 33.9947, 28.7808



Tritanopia

36.8550, 33.7752, 36.9245

Trichromacy



Original Color

35.2610, 33.8380, 28.7177

Protanomaly

33.1579, 33.6922, 29.9549

Deuteranomaly

34.7101, 33.7920, 28.7378

Tritanomaly

36.1834, 33.7285, 33.8813

Monochromacy



Original Color

35.2610, 33.8380, 28.7177

Achromatopsia

32.9542, 34.6704, 37.7561

Achromatomaly

33.6228, 34.3361, 34.1336

CSS Examples

Text

The CSS property to change the color of the text to XYZ 35.2610, 33.8380, 28.7177 is called "color". The color property can be set on classes, ids or directly on the HTML element.

This example shows how text in the color `rgb(184, 150, 138)` looks like.

```
.text, #text, p{  
    color:rgb(184, 150, 138)  
}
```

If you want to add a text shadow in that color use the text-shadow property, you can generate a text shadow directly with our [CSS Text Shadow Generator](#).

Here you see how black text with a 4 pixel rgb(184, 150, 138) colored shadow looks like.

```
.shadow{ text-shadow: 4px 4px 2px rgb(184, 150, 138) }
```

Border

The CSS property to change the border of an element to XYZ 35.2610, 33.8380, 28.7177 is called "border". The border property can be set on classes, ids or directly on the HTML element.

This example shows the color as border, it can be applied via the CSS property "border" or "border-color".

```
.border, #border, table{ border:4px solid rgb(184, 150, 138) }
```


If only the border color should be changed use the property `border-color`.

```
.border{ border-color:rgb(184, 150, 138) }
```

If you want to add a box shadow in that color use:

Here you see how a box with a 4 pixel `rgb(184, 150, 138)` colored shadow looks like.

```
.boxshadow{ -moz-box-shadow:4px 4px 4px  
4px rgb(184, 150, 138); -webkit-box-  
shadow:4px 4px 4px 4px rgb(184, 150, 138);  
box-shadow:4px 4px 4px 4px rgb(184, 150,  
138) }
```

Background

The CSS property to change the background color of an element to XYZ 35.2610, 33.8380, 28.7177 is called "background". The background property can be set on classes, ids or directly on the HTML element.

```
.background, #background, body{  
background: rgb(184, 150, 138) }
```

If only the background color should be changed can be used:

```
.background{ background-color: rgb(184,  
150, 138) }
```

This example shows the color as background, it is applied via the CSS property "background".

To optimize and compress your CSS code, you can use our [online CSS compressor and optimizer](#) based on csstidy. If you want to create a linear or radial gradient as background or border, check our [CSS Gradient Generator](#).

Hey! You found this booklet interesting? Support Converting Colors with the new Membership Option!

The pro membership hides all ads, plus gives you double the colors in the color bucket, and more awesome pro features!

[Learn more, Memberships starting at \\$2.50/m!](#)

**Follow me
on Twitter!**

@ConvertingColor