

Converting Colors

XYZ(35.4481, 35.6863, 28.7341)

Have a look what the booklet for
XYZ(35.4481, 35.6863, 28.7341)
contains.

XYZ(35.3947, 35.6234, 28.6774)	3
<i>Conversions</i>	4
<i>Details</i>	6
<i>Harmonies</i>	12
<i>Previews</i>	24
<i>Color Blindness Simulation</i>	28
<i>CSS Examples</i>	31

Color

**XYZ(35.3947, 35.6234,
28.6774)**

Conversions

Conversions Part 1

Format	Color
Hex	B49D89
RGB	180, 157, 137
RGB Percent	71%, 62%, 54%
CMY	0.2941, 0.3843, 0.4627
CMYK	0.00, 0.13, 0.24, 0.29
HSL	28°, 22%, 62%
HSV	28°, 24%, 71%
XYZ	35.3947, 35.6234, 28.6774
YIQ	161.5970, 20.1280, -1.3440

Conversions

Conversions Part 2

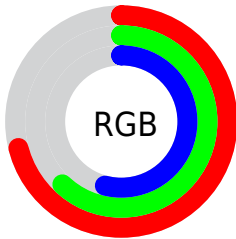
Format	Color
R_{YB}	180, 174, 137
Decimal	11836809
CIE _{Lab}	66.23, 5.28, 13.58
CIE _{LCh}	66, 14.568, 68.751
Yxy	35.6234, 0.3550, 0.3573
Android (android.graphics.Color)	4290026889 (0xFFB49D89)
YUV	161.5970, -12.1263, 16.1394
Hunter-Lab	59.6853, 1.4050, 13.2923

Details

The XYZ color **35.3947, 35.6234, 28.6774** is a light color, and the websafe version is hex **999999**. A complement of this color would be **31.1252, 33.7543, 48.0549**, and the grayscale version is **34.2033, 35.9845, 39.1871**.

A 20% lighter version of the original color is **67.4298, 68.6375, 58.4096**, and **15.6267, 15.5082, 11.1866** is the 20% darker color. If you saturate the color by 10%, you get **32.6449, 32.0206, 21.9132**, and if you desaturate by 10%, it is **38.4901, 39.5723, 36.6205**.

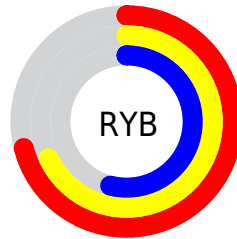
Distribution



Red (71%)

Green (62%)

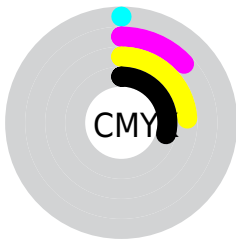
Blue (54%)



Red (71%)

Yellow (68%)

Blue (54%)

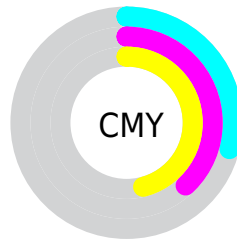


Cyan (0%)

Magenta (13%)

Yellow (24%)

Black (29%)



Cyan (29%)


Magenta (38%)


Yellow (46%)

Brightness & Saturation Gradients


These gradients show how the XYZ color 35.3947, 35.6234, 28.6774 changes by changing the brightness by 10 percent. The first figure shows a shift by +10% for each color and the second figure -10%.


Similar to the brightness gradients but the following saturation gradients show a change of the XYZ color 35.3947, 35.6234, 28.6774 by changing the saturation by 10% instead.


 35.3947, 35.6234,
28.6774


 35.3947, 35.6234,
28.6774


317.7847,
327.3115, 309.7029


 24.1350, 24.1435,
18.5934


 67.4268, 68.4504,
58.6002

 15.5591, 15.4401,
11.2030


 88.9299, 90.5663,
79.2761

 9.3016, 9.1288,
6.0877


 114.5781,
116.9962, 104.3198

 4.9971, 4.8253,
2.8288

144.7370,
148.1247, 134.1497

 2.2803, 2.1451,
1.0079

179.7717,
184.3361, 169.1844

 0.7845, 0.6898,
0.0000

220.0476,

 0.0000, 0.0000,

226.0147, 209.8425

0.0000

265.9302,
273.5451, 256.5425

■ 35.3947, 35.6234,
28.6774

■ 35.3947, 35.6234,
28.6774

■ 32.6449, 32.0206,
21.9132

■ 38.4901, 39.5723,
36.6205

■ 30.2244, 28.7488,
16.2683

■ 41.9412, 43.8721,
45.7934

■ 28.1194, 25.7991,
11.6815

■ 45.7609, 48.5337,
56.2471

■ 26.3140, 23.1598,
8.0846

■ 49.9608, 53.5659,
68.0285

■ 24.7907, 20.8188,
5.4013

■ 54.5517, 58.9772,
81.1826

■ 23.5295, 18.7626,
3.5439

■ 59.5441, 64.7759,
95.7520

■ 22.5071, 16.9760,
2.4071

■ 63.6327, 70.4438,
104.8510

■ 21.9724, 16.0033,
1.9309

■ 66.2995, 75.7775,
105.7399

■ 69.1153, 81.4090,
106.6785

Harmonies

Analogous

The Analogous color harmony consists of three colors that are next to each other on the color wheel.



37.2203, 35.6234, 31.7749



35.3947, 35.6234, 28.6774



33.2278, 35.6234, 28.1301

Triad

The Triadic color harmony groups three colors that are evenly spaced from another and form a triangle on the color wheel.



35.3947, 35.6234, 28.6774



29.8981, 35.6234, 40.6354



36.5399, 35.6234, 48.8795

Complementary

The Complementary color scheme is a pair of colors which are on the opposite of each other on the color wheel.



35.3947, 35.6234, 28.6774



31.1252, 33.7543, 48.0549

Split Complementary

Split-complementary colors differ from the complementary color scheme. The scheme consists of three colors, the original color and two neighbors of the complement color.



34.4981, 35.6234, 51.8458



35.3947, 35.6234, 28.6774



30.7064, 35.6234, 46.7634

Square

The Square scheme is like the rectangle color scheme, but the four colors are evenly spaced on the color wheel.



35.3947, 35.6234, 28.6774



30.1151, 35.6234, 34.6139



32.3683, 35.6234, 51.0326



37.9009, 35.6234, 43.2845

Rectangle

The Rectangle color scheme consists of four colors that form a rectangle on the color wheel.



35.3947, 35.6234, 28.6774



31.8903, 35.6234, 29.2213



32.3683, 35.6234, 51.0326



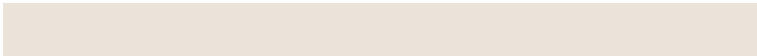
35.9070, 35.6234, 50.2429

Sweetspot

The Sweet Spot groups the original color and five complimentary colors.



35.3956, 35.6250, 28.6781



73.9540, 76.9590, 77.4086



34.1705, 30.1559, 37.5766



15.9041, 16.5342, 16.5171



86.6293, 91.1408, 99.2523



17.0014, 17.8868, 19.4787

Same Dimension

The Same Dimension uses a secret algorithm to generate beautiful new colors.



35.3956, 35.6250, 28.6781



61.3075, 60.8551, 44.8642



39.2285, 43.2907, 29.9558



8.8113, 9.1352, 8.9514



15.4014, 11.3013, 1.3696



0.5432, 0.4727, 0.0626

Inverse Universe

The Inverse Universe completely reimagines the original color for something new.



31.1252, 33.7543, 48.0549



52.1266, 56.8317, 86.5169



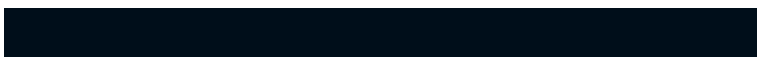
27.8095, 27.1228, 46.9496



8.4057, 8.9576, 10.7923



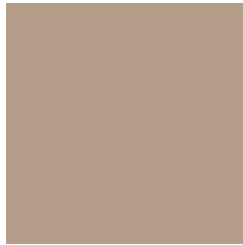
8.7538, 8.3079, 31.2792



0.3331, 0.3768, 1.0034

Previews

White Background



This preview shows how the XYZ color 35.3947, 35.6234, 28.6774 looks on a white background.

Color Contrast Check

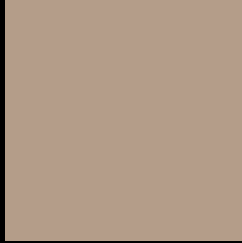
Large Text (above 18pt) WCAG AA × Fail

Any Text WCAG AA × Fail

Large Text (above 18pt) WCAG AAA × Fail

Any Text WCAG AAA × Fail

Black Background



This preview shows how the XYZ color 35.3947, 35.6234, 28.6774 looks on a black background.

Color Contrast Check

Large Text (above 18pt) WCAG AA ✓ Pass

Any Text WCAG AA ✓ Pass

Large Text (above 18pt) WCAG AAA ✓ Pass

Any Text WCAG AAA ✓ Pass

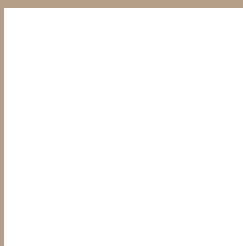
If you want to check with other color combinations, try the [Color Contrast Checker](#).

XYZ 35.3947, 35.6234, 28.6774

Background



This preview shows how black text looks on a background with the XYZ color 35.3947, 35.6234, 28.6774.



This preview shows how white text looks on a background with the XYZ color 35.3947, 35.6234,

Color Blindness Simulation

Color vision deficiency is a very complex topic, and I could not describe the different causes any better than Wikipedia does, so if you want to learn more, you should check out their [article about color blindness](#).

Dichromacy



Original Color

35.3947, 35.6234, 28.6774

Protanopia

33.7673, 35.7888, 29.5543

Deuteranopia

36.2443, 35.5631, 28.6210



Tritanopia

37.7112, 35.5664, 40.4747

Trichromacy



Original Color

35.3947, 35.6234, 28.6774

Protanomaly

34.3918, 35.8608, 29.1539

Deuteranomaly

35.9323, 35.6504, 28.6543

Tritanomaly

36.7634, 35.4228, 35.9100

Monochromacy



Original Color

35.3947, 35.6234, 28.6774

Achromatopsia

34.3422, 36.1307, 39.3463

Achromatomaly

34.6828, 35.8765, 35.2339

CSS Examples

Text

The CSS property to change the color of the text to XYZ 35.3947, 35.6234, 28.6774 is called "color". The color property can be set on classes, ids or directly on the HTML element.

This example shows how text in the color `rgb(180, 157, 137)` looks like.

```
.text, #text, p{  
    color:rgb(180, 157, 137)  
}
```

If you want to add a text shadow in that color use the text-shadow property, you can generate a text shadow directly with our [CSS Text Shadow Generator](#).

Here you see how black text with a 4 pixel rgb(180, 157, 137) colored shadow looks like.

```
.shadow{ text-shadow: 4px 4px 2px rgb(180, 157, 137) }
```

Border

The CSS property to change the border of an element to XYZ 35.3947, 35.6234, 28.6774 is called "border". The border property can be set on classes, ids or directly on the HTML element.

This example shows the color as border, it can be applied via the CSS property "border" or "border-color".

```
.border, #border, table{ border:4px solid rgb(180, 157, 137) }
```


If only the border color should be changed use the property `border-color`.

```
.border{ border-color:rgb(180, 157, 137) }
```

If you want to add a box shadow in that color use:

Here you see how a box with a 4 pixel `rgb(180, 157, 137)` colored shadow looks like.

```
.boxshadow{ -moz-box-shadow:4px 4px 4px  
4px rgb(180, 157, 137); -webkit-box-  
shadow:4px 4px 4px 4px rgb(180, 157, 137);  
box-shadow:4px 4px 4px 4px rgb(180, 157,  
137) }
```

Background

The CSS property to change the background color of an element to XYZ 35.3947, 35.6234, 28.6774 is called "background". The background property can be set on classes, ids or directly on the HTML element.

```
.background, #background, body{  
background: rgb(180, 157, 137) }
```

If only the background color should be changed can be used:

```
.background{ background-color: rgb(180,  
157, 137) }
```

This example shows the color as background, it is applied via the CSS property "background".

To optimize and compress your CSS code, you can use our [online CSS compressor and optimizer](#) based on csstidy. If you want to create a linear or radial gradient as background or border, check our [CSS Gradient Generator](#).

Hey! You found this booklet interesting? Support Converting Colors with the new Membership Option!

The pro membership hides all ads, plus gives you double the colors in the color bucket, and more awesome pro features!

[Learn more, Memberships starting at \\$2.50/m!](#)

**Follow me
on Twitter!**

@ConvertingColor