

Converting Colors

XYZ(35.6245, 34.2186, 21.5550)

Have a look what the booklet for
XYZ(35.6245, 34.2186, 21.5550)
contains.

XYZ(35.6031, 34.1734, 21.5493)	3
<i>Conversions</i>	4
<i>Details</i>	6
<i>Harmonies</i>	12
<i>Previews</i>	24
<i>Color Blindness Simulation</i>	28
<i>CSS Examples</i>	31

Color

**XYZ(35.6031, 34.1734,
21.5493)**

Conversions

Conversions Part 1

Format	Color
Hex	BF9675
RGB	191, 150, 117
RGB Percent	75%, 59%, 46%
CMY	0.2510, 0.4117, 0.5412
CMYK	0.00, 0.21, 0.39, 0.25
HSL	27°, 37%, 60%
HSV	27°, 39%, 75%
XYZ	35.6031, 34.1734, 21.5493
YIQ	158.4970, 35.0290, -1.5710

Conversions

Conversions Part 2

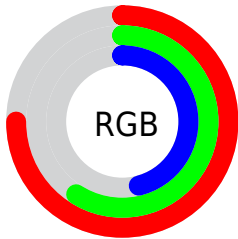
Format	Color
RYB	191, 177, 117
Decimal	12555893
CIELab	65.10, 10.86, 23.28
CIELCh	65, 25.684, 64.986
Yxy	34.1734, 0.3898, 0.3742
Android (android.graphics.Color)	4290745973 (0xFFBF9675)
YUV	158.4970, -20.4580, 28.5051
Hunter-Lab	58.4580, 6.4116, 19.0646

Details

The XYZ color **35.6031, 34.1734, 21.5493** is a light color, and the websafe version is hex **CC9966**. A complement of this color would be **28.9666, 31.9962, 53.9394**, and the grayscale version is **32.8050, 34.5134, 37.5851**.

A 20% lighter version of the original color is **67.8212, 66.1900, 46.7375**, and **15.6586, 14.5753, 7.4569** is the 20% darker color. If you saturate the color by 10%, you get **32.9799, 30.5445, 15.6883**, and if you desaturate by 10%, it is **38.6097, 38.2022, 28.6692**.

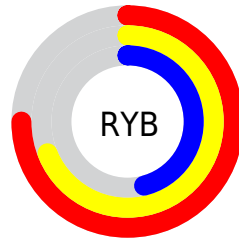
Distribution



Red (75%)

Green (59%)

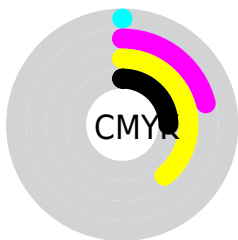
Blue (46%)



Red (75%)

Yellow (69%)

Blue (46%)

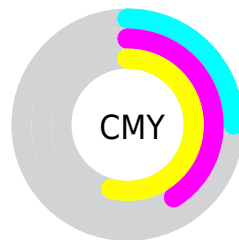


Cyan (0%)

Magenta (21%)

Yellow (39%)

Black (25%)



Cyan (25%)


Magenta (41%)


Yellow (54%)

Brightness & Saturation Gradients


These gradients show how the XYZ color 35.6031, 34.1734, 21.5493 changes by changing the brightness by 10 percent. The first figure shows a shift by +10% for each color and the second figure -10%.


Similar to the brightness gradients but the following saturation gradients show a change of the XYZ color 35.6031, 34.1734, 21.5493 by changing the saturation by 10% instead.


 35.6031, 34.1734,
21.5493


 35.6031, 34.1734,
21.5493


318.6840,
320.9045, 273.0598


 24.2965, 23.0268,
13.3310


 67.7469, 66.2032,
46.8925

 15.6796, 14.6133,
7.5234


 89.3148, 87.8553,
64.8545

 9.3872, 8.5485,
3.7082


 115.0339,
113.7780, 86.9015

 5.0537, 4.4479,
1.4667

145.2695,
144.3557, 113.4520

 2.3139, 1.9271,
0.1929

180.3869,
179.9728, 144.9245

 0.8018, 0.5646,
0.0000

220.7516,

 0.0000, 0.0000,

221.0137, 181.7376

0.0000

266.7288,
267.8628, 224.3099

■ 35.6031, 34.1734,
21.5493

■ 35.6031, 34.1734,
21.5493

■ 32.9799, 30.5445,
15.6883

■ 38.6097, 38.2022,
28.6692

■ 30.7194, 27.2969,
11.0091

■ 42.0138, 42.6389,
37.1149

■ 28.8028, 24.4178,
7.4287

■ 45.8319, 47.4973,
46.9510

■ 27.2080, 21.8913,
4.8530

■ 50.0786, 52.7891,
58.2371

■ 25.9097, 19.6999,
3.1710

■ 54.7680, 58.5254,
71.0295

■ 24.8682, 17.8200,
2.1979

■ 59.9133, 64.7170,
85.3813

■ 24.7490, 17.6027,
2.0932

■ 65.5271, 71.3740,
101.3432

■ 69.1458, 77.5162,
105.9255

■ 72.2601, 83.7449,
106.9636

Harmonies

Analogous

The Analogous color harmony consists of three colors that are next to each other on the color wheel.



38.7067, 34.1734, 26.6471



35.6031, 34.1734, 21.5493



31.8625, 34.1734, 20.2923

Triad

The Triadic color harmony groups three colors that are evenly spaced from another and form a triangle on the color wheel.



35.6031, 34.1734, 21.5493



25.8577, 34.1734, 39.0198



36.7613, 34.1734, 56.6628

Complementary

The Complementary color scheme is a pair of colors which are on the opposite of each other on the color wheel.



35.6031, 34.1734, 21.5493



28.9666, 31.9962, 53.9394

Split Complementary

Split-complementary colors differ from the complementary color scheme. The scheme consists of three colors, the original color and two neighbors of the complement color.



33.1071, 34.1734, 61.6015



35.6031, 34.1734, 21.5493



26.9611, 34.1734, 50.2474

Square

The Square scheme is like the rectangle color scheme, but the four colors are evenly spaced on the color wheel.



35.6031, 34.1734, 21.5493



26.4152, 34.1734, 29.1951



29.5466, 34.1734, 59.0546



39.4103, 34.1734, 46.5698

Rectangle

The Rectangle color scheme consists of four colors that form a rectangle on the color wheel.



35.6031, 34.1734, 21.5493



29.5495, 34.1734, 21.5464



29.5466, 34.1734, 59.0546



35.5998, 34.1734, 59.0603

Sweetspot

The Sweet Spot groups the original color and five complimentary colors.



35.6040, 34.1750, 21.5500



79.6425, 81.9818, 77.7286



34.0996, 26.3002, 36.0501



17.2884, 17.7480, 16.5508



92.9021, 97.7402, 106.4391



19.4759, 20.4902, 22.3138

Same Dimension

The Same Dimension uses a secret algorithm to generate beautiful new colors.



35.6040, 34.1750, 21.5500



59.9605, 55.9592, 30.0379



42.2698, 47.5067, 23.7719



9.8710, 10.2180, 10.0286



16.3426, 11.7240, 1.4016



0.7054, 0.5898, 0.0767

Inverse Universe

The Inverse Universe completely reimagines the original color for something new.



28.9666, 31.9962, 53.9394



46.4819, 51.5227, 95.7742



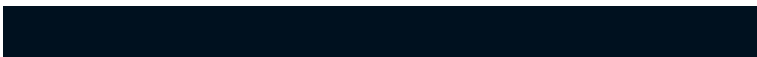
23.6918, 21.4466, 52.1812



9.4429, 10.0781, 12.1198



9.6361, 9.3839, 33.6963



0.4418, 0.4963, 1.3414

Previews

White Background



This preview shows how the XYZ color 35.6031, 34.1734, 21.5493 looks on a white background.

Color Contrast Check

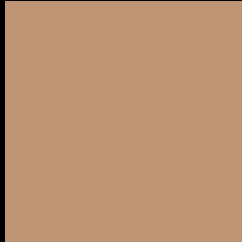
Large Text (above 18pt) WCAG AA × Fail

Any Text WCAG AA × Fail

Large Text (above 18pt) WCAG AAA × Fail

Any Text WCAG AAA × Fail

Black Background



This preview shows how the XYZ color 35.6031, 34.1734, 21.5493 looks on a black background.

Color Contrast Check

Large Text (above 18pt) WCAG AA ✓ Pass

Any Text WCAG AA ✓ Pass

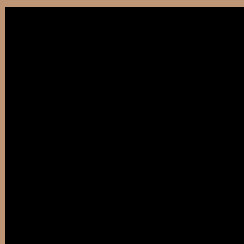
Large Text (above 18pt) WCAG AAA ✓ Pass

Any Text WCAG AAA ✓ Pass

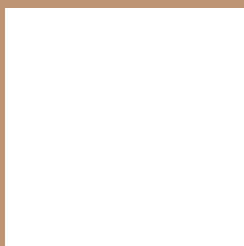
If you want to check with other color combinations, try the [Color Contrast Checker](#).

XYZ 35.6031, 34.1734, 21.5493

Background



This preview shows how black text looks on a background with the XYZ color 35.6031, 34.1734, 21.5493.



This preview shows how white text looks on a background with the XYZ color 35.6031, 34.1734,

Color Blindness Simulation

Color vision deficiency is a very complex topic, and I could not describe the different causes any better than Wikipedia does, so if you want to learn more, you should check out their [article about color blindness](#).

Dichromacy



Original Color

35.6031, 34.1734, 21.5493

Protanopia

32.0402, 34.2692, 23.0151

Deuteranopia

34.9326, 34.3056, 21.6101



Tritanopia

38.6318, 34.2532, 36.0279

Trichromacy



Original Color

35.6031, 34.1734, 21.5493

Protanomaly

33.2430, 34.1459, 22.6080

Deuteranomaly

35.0165, 34.1089, 21.5677

Tritanomaly

37.5643, 34.2898, 30.2299

Monochromacy



Original Color

35.6031, 34.1734, 21.5493

Achromatopsia

32.9542, 34.6704, 37.7561

Achromatomaly

33.7171, 34.4485, 31.2577

CSS Examples

Text

The CSS property to change the color of the text to XYZ 35.6031, 34.1734, 21.5493 is called "color". The color property can be set on classes, ids or directly on the HTML element.

This example shows how text in the color `rgb(191, 150, 117)` looks like.

```
.text, #text, p{  
    color:rgb(191, 150, 117)  
}
```

If you want to add a text shadow in that color use the text-shadow property, you can generate a text shadow directly with our [CSS Text Shadow Generator](#).

Here you see how black text with a 4 pixel rgb(191, 150, 117) colored shadow looks like.

```
.shadow{ text-shadow: 4px 4px 2px rgb(191, 150, 117) }
```

Border

The CSS property to change the border of an element to XYZ 35.6031, 34.1734, 21.5493 is called "border". The border property can be set on classes, ids or directly on the HTML element.

This example shows the color as border, it can be applied via the CSS property "border" or "border-color".

```
.border, #border, table{ border:4px solid rgb(191, 150, 117) }
```


If only the border color should be changed use the property `border-color`.

```
.border{ border-color:rgb(191, 150, 117) }
```

If you want to add a box shadow in that color use:

Here you see how a box with a 4 pixel `rgb(191, 150, 117)` colored shadow looks like.

```
.boxshadow{ -moz-box-shadow:4px 4px 4px  
4px rgb(191, 150, 117); -webkit-box-  
shadow:4px 4px 4px 4px rgb(191, 150, 117);  
box-shadow:4px 4px 4px 4px rgb(191, 150,  
117) }
```

Background

The CSS property to change the background color of an element to XYZ 35.6031, 34.1734, 21.5493 is called "background". The background property can be set on classes, ids or directly on the HTML element.

```
.background, #background, body{  
background: rgb(191, 150, 117) }
```

If only the background color should be changed can be used:

```
.background{ background-color: rgb(191,  
150, 117) }
```

This example shows the color as background, it is applied via the CSS property "background".

To optimize and compress your CSS code, you can use our [online CSS compressor and optimizer](#) based on csstidy. If you want to create a linear or radial gradient as background or border, check our [CSS Gradient Generator](#).

Hey! You found this booklet interesting? Support Converting Colors with the new Membership Option!

The pro membership hides all ads, plus gives you double the colors in the color bucket, and more awesome pro features!

[Learn more, Memberships starting at \\$2.50/m!](#)

**Follow me
on Twitter!**

@ConvertingColor