

Converting Colors

XYZ(35.6394, 33.0412, 31.2873)

Have a look what the booklet for
XYZ(35.6394, 33.0412, 31.2873)
contains.

XYZ(35.6394, 33.0412, 31.2873)	3
<i>Conversions</i>	4
<i>Details</i>	6
<i>Harmonies</i>	12
<i>Previews</i>	24
<i>Color Blindness Simulation</i>	28
<i>CSS Examples</i>	31

Color

**XYZ(35.6394, 33.0412,
31.2873)**

Conversions

Conversions Part 1

Format	Color
Hex	BA9291
RGB	186, 146, 145
RGB Percent	73%, 57%, 57%
CMY	0.2706, 0.4274, 0.4314
CMYK	0.00, 0.22, 0.22, 0.27
HSL	1°, 23%, 65%
HSV	1°, 22%, 73%
XYZ	35.6394, 33.0412, 31.2873
YIQ	157.8460, 24.1610, 8.1690

Conversions

Conversions Part 2

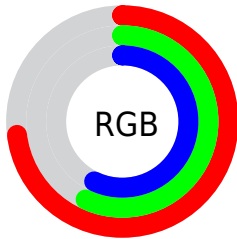
Format	Color
R _Y B	186, 146, 145
Decimal	12227217
CIE Lab	64.19, 14.89, 6.29
CIE LCh	64, 16.160, 22.901
Yxy	33.0412, 0.3565, 0.3305
Android (android.graphics.Color)	4290417297 (0xFFBA9291)
YUV	157.8460, -6.3331, 24.6911
Hunter-Lab	57.4815, 10.0802, 7.9653

Details

The XYZ color **35.6394, 33.0412, 31.2873** is a light color, and the websafe version is hex **CC9999**. A complement of this color would be **37.8885, 44.2616, 53.0010**, and the grayscale version is **32.4505, 34.1404, 37.1789**.

A 20% lighter version of the original color is **67.9252, 64.4868, 62.9000**, and **15.6735, 13.9162, 12.6865** is the 20% darker color. If you saturate the color by 10%, you get **31.7425, 27.3577, 23.4822**, and if you desaturate by 10%, it is **40.2169, 39.7095, 40.4785**.

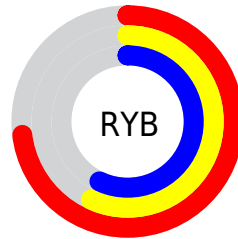
Distribution



Red (73%)

Green (57%)

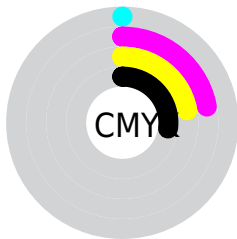
Blue (57%)



Red (73%)

Yellow (57%)

Blue (57%)

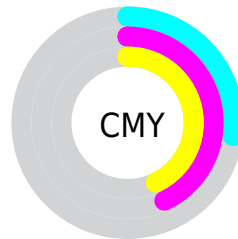


Cyan (0%)

Magenta (22%)

Yellow (22%)

Black (27%)



Cyan (27%)


Magenta (43%)


Yellow (43%)

Brightness & Saturation Gradients


These gradients show how the XYZ color 35.6394, 33.0412, 31.2873 changes by changing the brightness by 10 percent. The first figure shows a shift by +10% for each color and the second figure -10%.


Similar to the brightness gradients but the following saturation gradients show a change of the XYZ color 35.6394, 33.0412, 31.2873 by changing the saturation by 10% instead.


 35.6394, 33.0412,
31.2873


 35.6394, 33.0412,
31.2873

318.8405,
315.8353, 322.2518

 24.3246, 22.1580,
20.5574


 67.8026, 64.4398,
62.7770

 15.7007, 13.9730,
12.6128


 89.3818, 85.7241,
84.3739

 9.4021, 8.1019,
7.0349


115.1132,
111.2441, 110.4302

 5.0636, 4.1602,
3.4051

145.3622,
141.3844, 141.3644

 2.3197, 1.7636,
1.3050

180.4940,
176.5293, 177.5952

 0.8047, 0.4643,
0.0659

220.8741,

 0.0000, 0.0000,

217.0631, 219.5410

0.0000

266.8678,
263.3703, 267.6203

■ 35.6394, 33.0412,
31.2873

■ 35.6394, 33.0412,
31.2873

■ 31.7425, 27.3577,
23.4822

■ 40.2169, 39.7095,
40.4785

■ 28.4912, 22.6081,
16.9941

■ 45.5024, 47.4014,
51.1163

■ 25.8514, 18.7438,
11.7509

■ 51.5251, 56.1591,
63.2600

■ 23.7849, 15.7102,
7.6731

■ 58.3119, 66.0209,
76.9651

■ 22.2492, 13.4462,
4.6717

■ 65.8883, 77.0236,
92.2843

■ 21.1957, 11.8828,
2.6449

■ 74.0194, 89.0984,
107.9042

■ 20.5673, 10.9385,
1.4719

■ 74.0598, 89.1791,
107.9177

■ 20.2992, 10.5380,
0.9641

Harmonies

Analogous

The Analogous color harmony consists of three colors that are next to each other on the color wheel.



35.9815, 33.0412, 37.5579



35.6394, 33.0412, 31.2873



34.1372, 33.0412, 26.8237

Triad

The Triadic color harmony groups three colors that are evenly spaced from another and form a triangle on the color wheel.



35.6394, 33.0412, 31.2873



28.0209, 33.0412, 28.8910



30.8635, 33.0412, 50.0022

Complementary

The Complementary color scheme is a pair of colors which are on the opposite of each other on the color wheel.



35.6394, 33.0412, 31.2873



37.8885, 44.2616, 53.0010

Split Complementary

Split-complementary colors differ from the complementary color scheme. The scheme consists of three colors, the original color and two neighbors of the complement color.



28.8220, 33.0412, 47.0047



35.6394, 33.0412, 31.2873



27.2334, 33.0412, 34.4397

Square

The Square scheme is like the rectangle color scheme, but the four colors are evenly spaced on the color wheel.



35.6394, 33.0412, 31.2873



29.7216, 33.0412, 25.5621



27.5194, 33.0412, 41.1117



33.1501, 33.0412, 48.8926

Rectangle

The Rectangle color scheme consists of four colors that form a rectangle on the color wheel.



35.6394, 33.0412, 31.2873



32.7176, 33.0412, 25.2160



27.5194, 33.0412, 41.1117



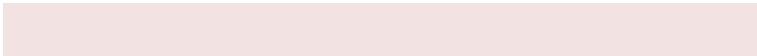
30.1273, 33.0412, 49.4303

Sweetspot

The Sweet Spot groups the original color and five complimentary colors.



35.6403, 33.0427, 31.2880



77.4513, 78.6075, 82.5342



39.1658, 34.2065, 50.6128



16.9296, 17.1266, 17.9208



90.7827, 95.5105, 104.0109



18.6292, 19.5994, 21.3438

Same Dimension

The Same Dimension uses a secret algorithm to generate beautiful new colors.



35.6403, 33.0427, 31.2880



61.3519, 55.1561, 50.2011



39.0304, 39.8229, 32.4180



9.0218, 9.0465, 9.3775



13.6647, 7.1058, 0.6513



0.4877, 0.2625, 0.0250

Inverse Universe

The Inverse Universe completely reimagines the original color for something new.



37.8885, 44.2616, 53.0010



66.0854, 78.7793, 95.9243



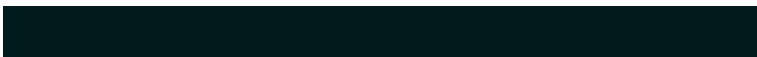
33.9624, 36.4095, 51.6923



9.2473, 10.1719, 11.5554



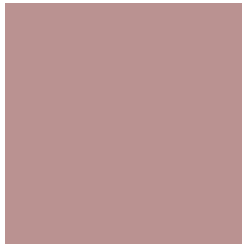
17.1493, 24.7582, 35.1280



0.6105, 0.8847, 1.2403

Previews

White Background



This preview shows how the XYZ color 35.6394, 33.0412, 31.2873 looks on a white background.

Color Contrast Check

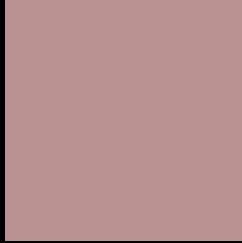
Large Text (above 18pt) WCAG AA × Fail

Any Text WCAG AA × Fail

Large Text (above 18pt) WCAG AAA × Fail

Any Text WCAG AAA × Fail

Black Background



This preview shows how the XYZ color 35.6394, 33.0412, 31.2873 looks on a black background.

Color Contrast Check

Large Text (above 18pt) WCAG AA ✓ Pass

Any Text WCAG AA ✓ Pass

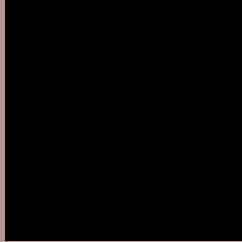
Large Text (above 18pt) WCAG AAA ✓ Pass

Any Text WCAG AAA ✓ Pass

If you want to check with other color combinations, try the [Color Contrast Checker](#).

XYZ 35.6394, 33.0412, 31.2873

Background



This preview shows how black text looks on a background with the XYZ color 35.6394, 33.0412, 31.2873.



This preview shows how white text looks on a background with the XYZ color 35.6394, 33.0412,

31.2873.

Color Blindness Simulation

Color vision deficiency is a very complex topic, and I could not describe the different causes any better than Wikipedia does, so if you want to learn more, you should check out their [article about color blindness](#).

Dichromacy



Original Color

35.6394, 33.0412, 31.2873

Protanopia

31.7236, 33.1183, 33.5746

Deuteranopia

33.6196, 32.9403, 30.9717



Tritanopia

36.4675, 32.9116, 35.8830

Trichromacy



Original Color

35.6394, 33.0412, 31.2873

Protanomaly

32.9357, 33.0296, 32.6564

Deuteranomaly

34.3719, 33.0922, 30.9614

Tritanomaly

36.2864, 33.0826, 34.1788

Monochromacy



Original Color

35.6394, 33.0412, 31.2873

Achromatopsia

32.4990, 34.1914, 37.2345

Achromatomaly

33.4538, 33.7359, 34.8855

CSS Examples

Text

The CSS property to change the color of the text to XYZ 35.6394, 33.0412, 31.2873 is called "color". The color property can be set on classes, ids or directly on the HTML element.

This example shows how text in the color `rgb(186, 146, 145)` looks like.

```
.text, #text, p{  
    color:rgb(186, 146, 145)  
}
```

If you want to add a text shadow in that color use the text-shadow property, you can generate a text shadow directly with our [CSS Text Shadow Generator](#).

Here you see how black text with a 4 pixel rgb(186, 146, 145) colored shadow looks like.

```
.shadow{ text-shadow: 4px 4px 2px rgb(186, 146, 145) }
```

Border

The CSS property to change the border of an element to XYZ 35.6394, 33.0412, 31.2873 is called "border". The border property can be set on classes, ids or directly on the HTML element.

This example shows the color as border, it can be applied via the CSS property "border" or "border-color".

```
.border, #border, table{ border:4px solid rgb(186, 146, 145) }
```


If only the border color should be changed use the property `border-color`.

```
.border{ border-color:rgb(186, 146, 145) }
```

If you want to add a box shadow in that color use:

Here you see how a box with a 4 pixel `rgb(186, 146, 145)` colored shadow looks like.

```
.boxshadow{ -moz-box-shadow:4px 4px 4px  
4px rgb(186, 146, 145); -webkit-box-  
shadow:4px 4px 4px 4px rgb(186, 146, 145);  
box-shadow:4px 4px 4px 4px rgb(186, 146,  
145) }
```

Background

The CSS property to change the background color of an element to XYZ 35.6394, 33.0412, 31.2873 is called "background". The background property can be set on classes, ids or directly on the HTML element.

```
.background, #background, body{  
background: rgb(186, 146, 145) }
```

If only the background color should be changed can be used:

```
.background{ background-color: rgb(186,  
146, 145) }
```

This example shows the color as background, it is applied via the CSS property "background".

To optimize and compress your CSS code, you can use our [online CSS compressor and optimizer](#) based on csstidy. If you want to create a linear or radial gradient as background or border, check our [CSS Gradient Generator](#).

Hey! You found this booklet interesting? Support Converting Colors with the new Membership Option!

The pro membership hides all ads, plus gives you double the colors in the color bucket, and more awesome pro features!

[Learn more, Memberships starting at \\$2.50/m!](#)

**Follow me
on Twitter!**

@ConvertingColor