

Converting Colors

XYZ(35.6435, 34.0744, 34.0730)

Have a look what the booklet for
XYZ(35.6435, 34.0744, 34.0730)
contains.

XYZ(35.7086, 34.1913, 33.9957)	3
<i>Conversions</i>	4
<i>Details</i>	6
<i>Harmonies</i>	12
<i>Previews</i>	24
<i>Color Blindness Simulation</i>	28
<i>CSS Examples</i>	31

Color

**XYZ(35.7086, 34.1913,
33.9957)**

Conversions

Conversions Part 1

Format	Color
Hex	B59797
RGB	181, 151, 151
RGB Percent	71%, 59%, 59%
CMY	0.2902, 0.4078, 0.4078
CMYK	0.00, 0.17, 0.17, 0.29
HSL	0°, 17%, 65%
HSV	0°, 17%, 71%
XYZ	35.7086, 34.1913, 33.9957
YIQ	159.9700, 17.8800, 6.3600

Conversions

Conversions Part 2

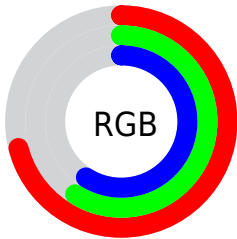
Format	Color
R_{YB}	181, 151, 151
Decimal	11900823
CIE _{Lab}	65.11, 11.15, 4.17
CIE _{LCh}	65, 11.909, 20.503
Yxy	34.1913, 0.3437, 0.3291
Android (android.graphics.Color)	4290090903 (0xFFB59797)
YUV	159.9700, -4.4222, 18.4433
Hunter-Lab	58.4733, 6.6784, 6.4608

Details

The XYZ color **35.7086, 34.1913, 33.9957** is a light color, and the websafe version is hex **CC9999**. A complement of this color would be **37.6267, 42.9625, 50.0259**, and the grayscale version is **33.4145, 35.1547, 38.2834**.

A 20% lighter version of the original color is **67.7758, 66.0749, 66.9392**, and **15.7595, 14.6236, 14.0486** is the 20% darker color. If you saturate the color by 10%, you get **31.6577, 28.2639, 25.9414**, and if you desaturate by 10%, it is **40.4342, 41.1063, 43.3891**.

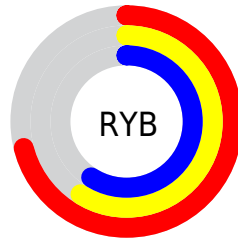
Distribution



Red (71%)

Green (59%)

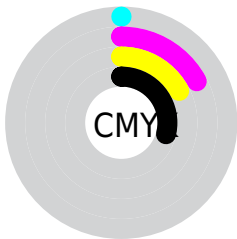
Blue (59%)



Red (71%)

Yellow (59%)

Blue (59%)

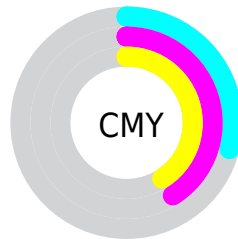


Cyan (0%)

Magenta (17%)

Yellow (17%)

Black (29%)



Cyan (29%)


Magenta (41%)


Yellow (41%)

Brightness & Saturation Gradients


These gradients show how the XYZ color 35.7086, 34.1913, 33.9957 changes by changing the brightness by 10 percent. The first figure shows a shift by +10% for each color and the second figure -10%.


Similar to the brightness gradients but the following saturation gradients show a change of the XYZ color 35.7086, 34.1913, 33.9957 by changing the saturation by 10% instead.


 35.7086, 34.1913,
33.9957


 35.7086, 34.1913,
33.9957


319.1386,
320.9842, 334.8814

 24.3783, 23.0406,
22.6130


 67.9089, 66.2310,
67.0608

 15.7407, 14.6235,
14.1054


 89.5096, 87.8889,
89.5802

 9.4306, 8.5556,
8.0544


115.2644,
113.8179, 116.6490

 5.0824, 4.4525,
4.0415

145.5388,
144.4024, 148.6856

 2.3310, 1.9297,
1.6481

180.6980,
180.0270, 186.1086

 0.8104, 0.5662,
0.3248

221.1075,

 0.0000, 0.0000,

221.0758, 229.3366

0.0000

267.1326,
267.9335, 278.7880

■ 35.7086, 34.1913,
33.9957

■ 35.7086, 34.1913,
33.9957

■ 31.6577, 28.2639,
25.9414

■ 40.4342, 41.1063,
43.3891

■ 28.2482, 23.2748,
19.1633

■ 45.8604, 49.0462,
54.1765

■ 25.4479, 19.1772,
13.5966

■ 52.0150, 58.0520,
66.4122

■ 23.2211, 15.9186,
9.1699

■ 58.9236, 68.1610,
80.1469

■ 21.5280, 13.4412,
5.8044

■ 66.6106, 79.4090,
95.4291

■ 20.3241, 11.6794,
3.4114

■ 72.8662, 88.5639,
107.8618

■ 19.5575, 10.5575,
1.8876

■ 19.1577, 9.9724,
1.0932

■ 19.0565, 9.8243,
0.8919

Harmonies

Analogous

The Analogous color harmony consists of three colors that are next to each other on the color wheel.



35.8844, 34.1913, 38.8199



35.7086, 34.1913, 33.9957



34.6561, 34.1913, 30.3612

Triad

The Triadic color harmony groups three colors that are evenly spaced from another and form a triangle on the color wheel.



35.7086, 34.1913, 33.9957



30.0020, 34.1913, 31.5011



31.9529, 34.1913, 47.4188

Complementary

The Complementary color scheme is a pair of colors which are on the opposite of each other on the color wheel.



35.7086, 34.1913, 33.9957



37.6267, 42.9625, 50.0259

Split Complementary

Split-complementary colors differ from the complementary color scheme. The scheme consists of three colors, the original color and two neighbors of the complement color.



30.4310, 34.1913, 45.0603



35.7086, 34.1913, 33.9957



29.3313, 34.1913, 35.6812

Square

The Square scheme is like the rectangle color scheme, but the four colors are evenly spaced on the color wheel.



35.7086, 34.1913, 33.9957



31.3485, 34.1913, 29.0119



29.4855, 34.1913, 40.6600



33.6749, 34.1913, 46.8662

Rectangle

The Rectangle color scheme consists of four colors that form a rectangle on the color wheel.



35.7086, 34.1913, 33.9957



33.6188, 34.1913, 28.9636



29.4855, 34.1913, 40.6600



31.4020, 34.1913, 46.9328

Sweetspot

The Sweet Spot groups the original color and five complimentary colors.



35.7095, 34.1928, 33.9964



73.7841, 75.6214, 80.4277



38.4636, 35.2937, 48.5016



15.8096, 16.1429, 17.1094



86.6293, 91.1408, 99.2523



17.0014, 17.8868, 19.4787

Same Dimension

The Same Dimension uses a secret algorithm to generate beautiful new colors.



35.7095, 34.1928, 33.9964



61.0876, 57.0431, 55.1871



38.2786, 39.3310, 34.8528



8.4965, 8.5054, 8.8464



13.1370, 6.7726, 0.6149



0.4134, 0.2131, 0.0194

Inverse Universe

The Inverse Universe completely reimagines the original color for something new.



37.6267, 42.9625, 50.0259



65.1905, 75.8109, 89.4917



34.7397, 37.1884, 49.0636



8.7426, 9.6314, 10.9046



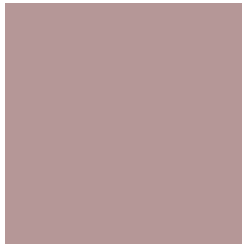
17.1384, 25.0772, 34.0741



0.5393, 0.7891, 1.0721

Previews

White Background



This preview shows how the XYZ color 35.7086, 34.1913, 33.9957 looks on a white background.

Color Contrast Check

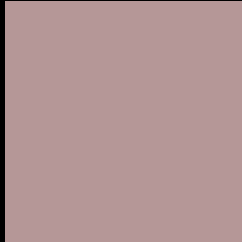
Large Text (above 18pt) WCAG AA × Fail

Any Text WCAG AA × Fail

Large Text (above 18pt) WCAG AAA × Fail

Any Text WCAG AAA × Fail

Black Background



This preview shows how the XYZ color 35.7086, 34.1913, 33.9957 looks on a black background.

Color Contrast Check

Large Text (above 18pt) WCAG AA ✓ Pass

Any Text WCAG AA ✓ Pass

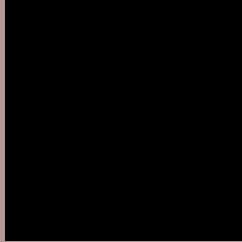
Large Text (above 18pt) WCAG AAA ✓ Pass

Any Text WCAG AAA ✓ Pass

If you want to check with other color combinations, try the [Color Contrast Checker](#).

XYZ 35.7086, 34.1913, 33.9957

Background



This preview shows how black text looks on a background with the XYZ color 35.7086, 34.1913, 33.9957.



This preview shows how white text looks on a background with the XYZ color 35.7086, 34.1913,

Color Blindness Simulation

Color vision deficiency is a very complex topic, and I could not describe the different causes any better than Wikipedia does, so if you want to learn more, you should check out their [article about color blindness](#).

Dichromacy



Original Color

35.7086, 34.1913, 33.9957

Protanopia

32.8737, 34.1619, 35.8716

Deuteranopia

34.8816, 34.2469, 34.0500



Tritanopia

36.4719, 34.0132, 38.3611

Trichromacy



Original Color

35.7086, 34.1913, 33.9957

Protanomaly

33.9163, 34.2108, 35.3876

Deuteranomaly

35.1742, 34.1558, 34.0170

Tritanomaly

36.2836, 34.1921, 36.5857

Monochromacy



Original Color

35.7086, 34.1913, 33.9957

Achromatopsia

33.4132, 35.1533, 38.2819

Achromatomaly

34.2912, 34.8731, 36.8221

CSS Examples

Text

The CSS property to change the color of the text to XYZ 35.7086, 34.1913, 33.9957 is called "color". The color property can be set on classes, ids or directly on the HTML element.

This example shows how text in the color `rgb(181, 151, 151)` looks like.

```
.text, #text, p{  
    color:rgb(181, 151, 151)  
}
```

If you want to add a text shadow in that color use the text-shadow property, you can generate a text shadow directly with our [CSS Text Shadow Generator](#).

Here you see how black text with a 4 pixel rgb(181, 151, 151) colored shadow looks like.

```
.shadow{ text-shadow: 4px 4px 2px rgb(181, 151, 151) }
```

Border

The CSS property to change the border of an element to XYZ 35.7086, 34.1913, 33.9957 is called "border". The border property can be set on classes, ids or directly on the HTML element.

This example shows the color as border, it can be applied via the CSS property "border" or "border-color".

```
.border, #border, table{ border:4px solid rgb(181, 151, 151) }
```


If only the border color should be changed use the property `border-color`.

```
.border{ border-color:rgb(181, 151, 151) }
```

If you want to add a box shadow in that color use:

Here you see how a box with a 4 pixel `rgb(181, 151, 151)` colored shadow looks like.

```
.boxshadow{ -moz-box-shadow:4px 4px 4px  
4px rgb(181, 151, 151); -webkit-box-  
shadow:4px 4px 4px 4px rgb(181, 151, 151);  
box-shadow:4px 4px 4px 4px rgb(181, 151,  
151) }
```

Background

The CSS property to change the background color of an element to XYZ 35.7086, 34.1913, 33.9957 is called "background". The background property can be set on classes, ids or directly on the HTML element.

```
.background, #background, body{  
background: rgb(181, 151, 151) }
```

If only the background color should be changed can be used:

```
.background{ background-color: rgb(181,  
151, 151) }
```

This example shows the color as background, it is applied via the CSS property "background".

To optimize and compress your CSS code, you can use our [online CSS compressor and optimizer](#) based on csstidy. If you want to create a linear or radial gradient as background or border, check our [CSS Gradient Generator](#).

Hey! You found this booklet interesting? Support Converting Colors with the new Membership Option!

The pro membership hides all ads, plus gives you double the colors in the color bucket, and more awesome pro features!

[Learn more, Memberships starting at \\$2.50/m!](#)

**Follow me
on Twitter!**

@ConvertingColor