

Converting Colors

XYZ(35.6476, 34.1552, 20.9479)

Have a look what the booklet for
XYZ(35.6476, 34.1552, 20.9479)
contains.

XYZ(35.7391, 34.2570, 20.9483)	3
<i>Conversions</i>	4
<i>Details</i>	6
<i>Harmonies</i>	12
<i>Previews</i>	24
<i>Color Blindness Simulation</i>	28
<i>CSS Examples</i>	31

Color

**XYZ(35.7391, 34.2570,
20.9483)**

Conversions

Conversions Part 1

Format	Color
Hex	C09673
RGB	192, 150, 115
RGB Percent	75%, 59%, 45%
CMY	0.2471, 0.4117, 0.5490
CMYK	0.00, 0.22, 0.40, 0.25
HSL	27°, 38%, 60%
HSV	27°, 40%, 75%
XYZ	35.7391, 34.2570, 20.9483
YIQ	158.5680, 36.2670, -1.9810

Conversions

Conversions Part 2

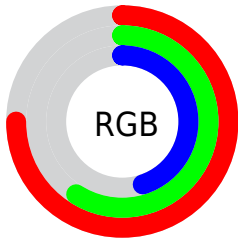
Format	Color
RYB	192, 179, 115
Decimal	12621427
CIELab	65.17, 11.03, 24.48
CIElCh	65, 26.854, 65.740
Yxy	34.2570, 0.3930, 0.3767
Android (android.graphics.Color)	4290811507 (0xFFC09673)
YUV	158.5680, -21.4790, 29.3199
Hunter-Lab	58.5295, 6.5686, 19.7501

Details

The XYZ color **35.7391, 34.2570, 20.9483** is a light color, and the websafe version is hex **CC9966**. A complement of this color would be **28.6412, 31.5634, 54.4519**, and the grayscale version is **32.8415, 34.5518, 37.6269**.

A 20% lighter version of the original color is **67.9923, 66.2997, 45.7728**, and **15.7617, 14.6354, 7.1484** is the 20% darker color. If you saturate the color by 10%, you get **33.1504, 30.6674, 15.1907**, and if you desaturate by 10%, it is **38.7090, 38.2406, 27.9690**.

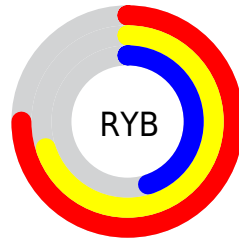
Distribution



Red (75%)

Green (59%)

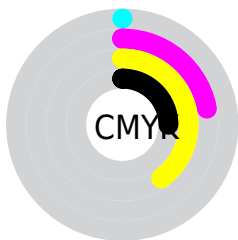
Blue (45%)



Red (75%)

Yellow (70%)

Blue (45%)

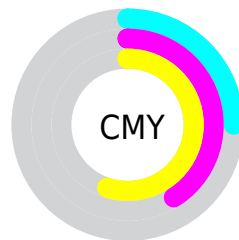


Cyan (0%)

Magenta (22%)

Yellow (40%)

Black (25%)



Cyan (25%)

Magenta (41%)

Yellow (55%)

Brightness & Saturation Gradients

These gradients show how the XYZ color 35.7391, 34.2570, 20.9483 changes by changing the brightness by 10 percent. The first figure shows a shift by +10% for each color and the second figure -10%.

Similar to the brightness gradients but the following saturation gradients show a change of the XYZ color 35.7391, 34.2570, 20.9483 by changing the saturation by 10% instead.

■ 35.7391, 34.2570,
20.9483

■ 35.7391, 34.2570,
20.9483

319.2699,
321.2765, 269.7756

■ 24.4019, 23.0911,
12.8953

■ 67.9557, 66.3331,
45.8811

■ 15.7584, 14.6608,
7.2266

■ 89.5658, 88.0121,
63.5981

■ 9.4431, 8.5817,
3.5236

■ 115.3310,
113.9643, 85.3735

■ 5.0907, 4.4693,
1.3678

145.6166,
144.5741, 111.6259

■ 2.3359, 1.9394,
0.1164

180.7879,
180.2258, 142.7737

■ 0.8129, 0.5719,
0.0000

221.2103,

■ 0.0000, 0.0000,

221.3038, 179.2356

0.0000

267.2492,
268.1926, 221.4300

■ 35.7391, 34.2570,
20.9483

■ 35.7391, 34.2570,
20.9483

■ 33.1504, 30.6674,
15.1907

■ 38.7090, 38.2406,
27.9690

■ 30.9221, 27.4535,
10.6169

■ 42.0744, 42.6260,
36.3212

■ 29.0349, 24.6022,
7.1420

■ 45.8519, 47.4270,
46.0710

■ 27.4664, 22.0979,
4.6685

■ 50.0565, 52.6551,
57.2791

■ 26.1905, 19.9229,
3.0813

■ 54.7021, 58.3214,
70.0030

■ 25.1694, 18.0688,
2.1611

■ 59.8022, 64.4365,
84.2969

■ 65.3694, 71.0104,
100.2122

■ 69.1479, 77.1459,
105.8539

■ 72.2141, 83.2783,
106.8760

Harmonies

Analogous

The Analogous color harmony consists of three colors that are next to each other on the color wheel.



39.0331, 34.2570, 26.1106



35.7391, 34.2570, 20.9483



31.8161, 34.2570, 19.7542

Triad

The Triadic color harmony groups three colors that are evenly spaced from another and form a triangle on the color wheel.



35.7391, 34.2570, 20.9483



25.6553, 34.2570, 39.4893



37.1391, 34.2570, 57.5850

Complementary

The Complementary color scheme is a pair of colors which are on the opposite of each other on the color wheel.



35.7391, 34.2570, 20.9483



28.6412, 31.5634, 54.4519

Split Complementary

Split-complementary colors differ from the complementary color scheme. The scheme consists of three colors, the original color and two neighbors of the complement color.



33.3160, 34.2570, 63.0047



35.7391, 34.2570, 20.9483



26.8457, 34.2570, 51.3013

Square

The Square scheme is like the rectangle color scheme, but the four colors are evenly spaced on the color wheel.



35.7391, 34.2570, 20.9483



26.1917, 34.2570, 29.1546



29.5757, 34.2570, 60.5018



39.8855, 34.2570, 46.8368

Rectangle

The Rectangle color scheme consists of four colors that form a rectangle on the color wheel.



35.7391, 34.2570, 20.9483



29.4113, 34.2570, 21.1083



29.5757, 34.2570, 60.5018



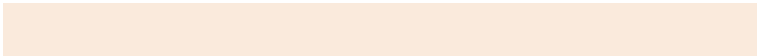
35.9263, 34.2570, 60.1787

Sweetspot

The Sweet Spot groups the original color and five complimentary colors.



35.7400, 34.2586, 20.9490



81.5885, 84.0548, 79.5731



33.9849, 25.9146, 35.2663



17.3056, 17.7824, 16.5566



92.9021, 97.7402, 106.4391



19.4759, 20.4902, 22.3138

Same Dimension

The Same Dimension uses a secret algorithm to generate beautiful new colors.



35.7400, 34.2586, 20.9490



60.6543, 56.3959, 28.7895



42.8481, 48.4748, 23.3184



10.4419, 10.8152, 10.5991



17.0121, 12.3100, 1.4794



0.8038, 0.6694, 0.0868

Inverse Universe

The Inverse Universe completely reimagines the original color for something new.



28.6412, 31.5634, 54.4519



46.0356, 50.8336, 97.7458



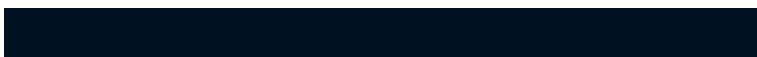
23.1640, 20.6090, 52.6262



9.9733, 10.6379, 12.8125



9.8607, 9.4778, 34.8663



0.4942, 0.5459, 1.5292

Previews

White Background



This preview shows how the XYZ color 35.7391, 34.2570, 20.9483 looks on a white background.

Color Contrast Check

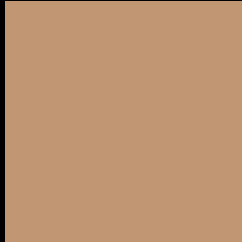
Large Text (above 18pt) WCAG AA × Fail

Any Text WCAG AA × Fail

Large Text (above 18pt) WCAG AAA × Fail

Any Text WCAG AAA × Fail

Black Background



This preview shows how the XYZ color 35.7391, 34.2570, 20.9483 looks on a black background.

Color Contrast Check

Large Text (above 18pt) WCAG AA ✓ Pass

Any Text WCAG AA ✓ Pass

Large Text (above 18pt) WCAG AAA ✓ Pass

Any Text WCAG AAA ✓ Pass

If you want to check with other color combinations, try the [Color Contrast Checker](#).

XYZ 35.7391, 34.2570, 20.9483

Background



This preview shows how black text looks on a background with the XYZ color 35.7391, 34.2570, 20.9483.



This preview shows how white text looks on a background with the XYZ color 35.7391, 34.2570,

Color Blindness Simulation

Color vision deficiency is a very complex topic, and I could not describe the different causes any better than Wikipedia does, so if you want to learn more, you should check out their [article about color blindness](#).

Dichromacy



Original Color

35.7391, 34.2570, 20.9483

Protanopia

32.1342, 34.3317, 22.3858

Deuteranopia

35.0618, 34.3856, 21.0088



Tritanopia

38.8911, 34.3869, 36.0400

Trichromacy



Original Color

35.7391, 34.2570, 20.9483

Protanomaly

33.3515, 34.2157, 21.9860

Deuteranomaly

35.1474, 34.1898, 20.9665

Tritanomaly

37.7471, 34.3926, 29.8483

Monochromacy



Original Color

35.7391, 34.2570, 20.9483

Achromatopsia

32.9542, 34.6704, 37.7561

Achromatomaly

33.6410, 34.4180, 30.8569

CSS Examples

Text

The CSS property to change the color of the text to XYZ 35.7391, 34.2570, 20.9483 is called "color". The color property can be set on classes, ids or directly on the HTML element.

This example shows how text in the color `rgb(192, 150, 115)` looks like.

```
.text, #text, p{  
    color:rgb(192, 150, 115)  
}
```

If you want to add a text shadow in that color use the text-shadow property, you can generate a text shadow directly with our [CSS Text Shadow Generator](#).

Here you see how black text with a 4 pixel rgb(192, 150, 115) colored shadow looks like.

```
.shadow{ text-shadow: 4px 4px 2px rgb(192, 150, 115) }
```

Border

The CSS property to change the border of an element to XYZ 35.7391, 34.2570, 20.9483 is called "border". The border property can be set on classes, ids or directly on the HTML element.

This example shows the color as border, it can be applied via the CSS property "border" or "border-color".

```
.border, #border, table{ border:4px solid rgb(192, 150, 115) }
```


If only the border color should be changed use the property `border-color`.

```
.border{ border-color:rgb(192, 150, 115) }
```

If you want to add a box shadow in that color use:

Here you see how a box with a 4 pixel `rgb(192, 150, 115)` colored shadow looks like.

```
.boxshadow{ -moz-box-shadow:4px 4px 4px  
4px rgb(192, 150, 115); -webkit-box-  
shadow:4px 4px 4px 4px rgb(192, 150, 115);  
box-shadow:4px 4px 4px 4px rgb(192, 150,  
115) }
```

Background

The CSS property to change the background color of an element to XYZ 35.7391, 34.2570, 20.9483 is called "background". The background property can be set on classes, ids or directly on the HTML element.

```
.background, #background, body{  
background: rgb(192, 150, 115) }
```

If only the background color should be changed can be used:

```
.background{ background-color: rgb(192,  
150, 115) }
```

This example shows the color as background, it is applied via the CSS property "background".

To optimize and compress your CSS code, you can use our [online CSS compressor and optimizer](#) based on csstidy. If you want to create a linear or radial gradient as background or border, check our [CSS Gradient Generator](#).

Hey! You found this booklet interesting? Support Converting Colors with the new Membership Option!

The pro membership hides all ads, plus gives you double the colors in the color bucket, and more awesome pro features!

[Learn more, Memberships starting at \\$2.50/m!](#)

**Follow me
on Twitter!**

@ConvertingColor