

Converting Colors

XYZ(35.7169, 33.0722, 31.6952)

Have a look what the booklet for
XYZ(35.7169, 33.0722, 31.6952)
contains.

XYZ(35.7169, 33.0722, 31.6952)	3
<i>Conversions</i>	4
<i>Details</i>	6
<i>Harmonies</i>	12
<i>Previews</i>	24
<i>Color Blindness Simulation</i>	28
<i>CSS Examples</i>	31

Color

**XYZ(35.7169, 33.0722,
31.6952)**

Conversions

Conversions Part 1

Format	Color
Hex	BA9292
RGB	186, 146, 146
RGB Percent	73%, 57%, 57%
CMY	0.2706, 0.4274, 0.4274
CMYK	0.00, 0.22, 0.22, 0.27
HSL	0°, 22%, 65%
HSV	0°, 22%, 73%
XYZ	35.7169, 33.0722, 31.6952
YIQ	157.9600, 23.8400, 8.4800

Conversions

Conversions Part 2

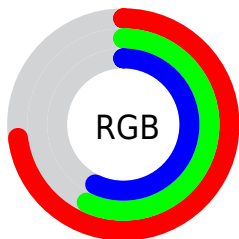
Format	Color
RYB	186, 146, 146
Decimal	12227218
CIELab	64.22, 15.04, 5.76
CIELCh	64, 16.105, 20.959
Yxy	33.0722, 0.3554, 0.3291
Android (android.graphics.Color)	4290417298 (0xFFBA9292)
YUV	157.9600, -5.8963, 24.5911
Hunter-Lab	57.5084, 10.2217, 7.5788

Details

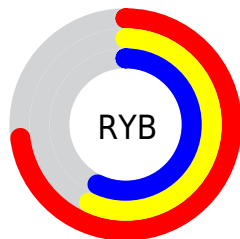
The XYZ color **35.7169, 33.0722, 31.6952** is a light color, and the websafe version is hex **CC9999**. A complement of this color would be **38.2755, 44.7728, 53.0793**, and the grayscale version is **32.5003, 34.1929, 37.2360**.

A 20% lighter version of the original color is **68.0418, 64.5334, 63.5136**, and **15.7192, 13.9345, 12.9275** is the 20% darker color. If you saturate the color by 10%, you get **31.7487, 27.2658, 23.8055**, and if you desaturate by 10%, it is **40.3887, 39.9085, 40.9816**.

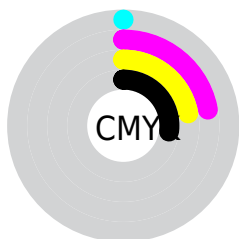
Distribution



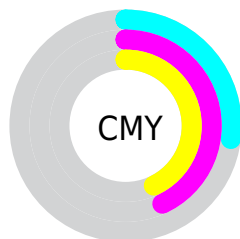
- Red (73%)
- Green (57%)
- Blue (57%)



- Red (73%)
- Yellow (57%)
- Blue (57%)



- Cyan (0%)
- Magenta (22%)
- Yellow (22%)
- Black (27%)





- Cyan (27%)
- Magenta (43%)
- Yellow (43%)

Brightness & Saturation Gradients


These gradients show how the XYZ color 35.7169, 33.0722, 31.6952 changes by changing the brightness by 10 percent. The first figure shows a shift by +10% for each color and the second figure -10%.


Similar to the brightness gradients but the following saturation gradients show a change of the XYZ color 35.7169, 33.0722, 31.6952 by changing the saturation by 10% instead.

 35.7169, 33.0722,
31.6952


 35.7169, 33.0722,
31.6952


319.1743,
315.9749, 324.1783

 24.3847, 22.1818,
20.8659


 67.9216, 64.4882,
63.4253

 15.7455, 13.9905,
12.8357


 89.5249, 85.7826,
85.1632

 9.4340, 8.1141,
7.1861


115.2825,
111.3138, 111.3744

 5.0847, 4.1680,
3.4986

145.5599,
141.4661, 142.4773

 2.3323, 1.7680,
1.3545

180.7225,
176.6240, 178.8907

 0.8111, 0.4671,
0.1058

221.1355,

 0.0000, 0.0000,

217.1718, 221.0329

0.0000

267.1643,
263.4940, 269.3226

■ 35.7169, 33.0722,
31.6952

■ 35.7169, 33.0722,
31.6952

■ 31.7487, 27.2658,
23.8055

■ 40.3887, 39.9085,
40.9816

■ 28.4476, 22.4353,
17.2430

■ 45.7931, 47.8166,
51.7255

■ 25.7777, 18.5285,
11.9355

■ 51.9605, 56.8412,
63.9866

■ 23.6988, 15.4865,
7.8030

■ 58.9191, 67.0234,
77.8205

■ 22.1661, 13.2436,
4.7562

■ 66.6955, 78.4022,
93.2803

■ 21.1283, 11.7249,
2.6934

■ 74.0598, 89.1792,
107.9177

■ 20.5244, 10.8411,
1.4932

■ 20.2500, 10.4395,
0.9477

Harmonies

Analogous

The Analogous color harmony consists of three colors that are next to each other on the color wheel.



35.9745, 33.0722, 38.0232



35.7169, 33.0722, 31.6952



34.2828, 33.0722, 27.0966

Triad

The Triadic color harmony groups three colors that are evenly spaced from another and form a triangle on the color wheel.



35.7169, 33.0722, 31.6952



28.1445, 33.0722, 28.6534



30.7489, 33.0722, 49.9165

Complementary

The Complementary color scheme is a pair of colors which are on the opposite of each other on the color wheel.



35.7169, 33.0722, 31.6952



38.2755, 44.7728, 53.0793

Split Complementary

Split-complementary colors differ from the complementary color scheme. The scheme consists of three colors, the original color and two neighbors of the complement color.



28.7478, 33.0722, 46.6906



35.7169, 33.0722, 31.6952



27.2928, 33.0722, 34.0692

Square

The Square scheme is like the rectangle color scheme, but the four colors are evenly spaced on the color wheel.



35.7169, 33.0722, 31.6952



29.8890, 33.0722, 25.4939



27.5082, 33.0722, 40.6996



33.0316, 33.0722, 49.0808

Rectangle

The Rectangle color scheme consists of four colors that form a rectangle on the color wheel.



35.7169, 33.0722, 31.6952



32.8890, 33.0722, 25.3797



27.5082, 33.0722, 40.6996



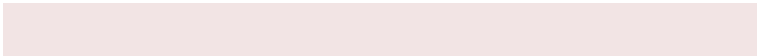
30.0228, 33.0722, 49.2581

Sweetspot

The Sweet Spot groups the original color and five complimentary colors.



35.7178, 33.0737, 31.6959



78.3333, 79.8380, 84.4732



39.3918, 34.5424, 51.0458



17.1090, 17.3749, 18.3214



90.7827, 95.5105, 104.0109



18.6292, 19.5994, 21.3438

Same Dimension

The Same Dimension uses a secret algorithm to generate beautiful new colors.



35.7178, 33.0737, 31.6959



61.0417, 54.5357, 50.0977



39.0746, 39.7872, 32.8148



9.0047, 9.0123, 9.3719



13.6235, 7.0234, 0.6376



0.4803, 0.2476, 0.0225

Inverse Universe

The Inverse Universe completely reimagines the original color for something new.



38.2755, 44.7728, 53.0793



66.5412, 79.6910, 96.0762



34.3536, 36.9290, 51.7720



9.2666, 10.2105, 11.5619



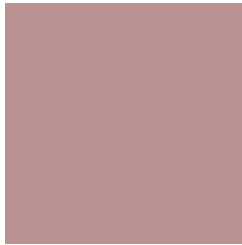
17.7735, 26.0066, 35.3361



0.6266, 0.9168, 1.2457

Previews

White Background



This preview shows how the XYZ color 35.7169, 33.0722, 31.6952 looks on a white background.

Color Contrast Check

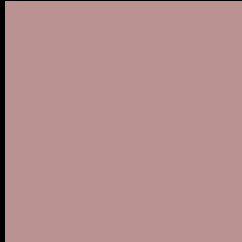
Large Text (above 18pt) WCAG AA × Fail

Any Text WCAG AA × Fail

Large Text (above 18pt) WCAG AAA × Fail

Any Text WCAG AAA × Fail

Black Background



This preview shows how the XYZ color 35.7169, 33.0722, 31.6952 looks on a black background.

Color Contrast Check

Large Text (above 18pt) WCAG AA ✓ Pass

Any Text WCAG AA ✓ Pass

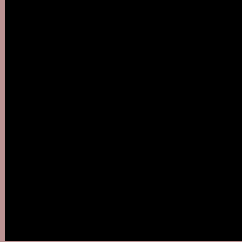
Large Text (above 18pt) WCAG AAA ✓ Pass

Any Text WCAG AAA ✓ Pass

If you want to check with other color combinations, try the [Color Contrast Checker](#).

XYZ 35.7169, 33.0722, 31.6952

Background



This preview shows how black text looks on a background with the XYZ color 35.7169, 33.0722, 31.6952.



This preview shows how white text looks on a background with the XYZ color 35.7169, 33.0722,

Color Blindness Simulation

Color vision deficiency is a very complex topic, and I could not describe the different causes any better than Wikipedia does, so if you want to learn more, you should check out their [article about color blindness](#).

Dichromacy



Original Color

35.7169, 33.0722, 31.6952

Protanopia

31.8045, 33.1506, 34.0006

Deuteranopia

33.6964, 32.9710, 31.3761



Tritanopia

36.6197, 33.2159, 35.9337

Trichromacy



Original Color

35.7169, 33.0722, 31.6952

Protanomaly

33.0152, 33.0614, 33.0752

Deuteranomaly

34.4487, 33.1229, 31.3658

Tritanomaly

36.2864, 33.0826, 34.1788

Monochromacy



Original Color

35.7169, 33.0722, 31.6952

Achromatopsia

32.4990, 34.1914, 37.2345

Achromatomaly

33.5368, 33.7691, 35.3224

CSS Examples

Text

The CSS property to change the color of the text to XYZ 35.7169, 33.0722, 31.6952 is called "color". The color property can be set on classes, ids or directly on the HTML element.

This example shows how text in the color `rgb(186, 146, 146)` looks like.

```
.text, #text, p{  
    color:rgb(186, 146, 146)  
}
```

If you want to add a text shadow in that color use the text-shadow property, you can generate a text shadow directly with our [CSS Text Shadow Generator](#).

Here you see how black text with a 4 pixel rgb(186, 146, 146) colored shadow looks like.

```
.shadow{ text-shadow: 4px 4px 2px rgb(186, 146, 146) }
```

Border

The CSS property to change the border of an element to XYZ 35.7169, 33.0722, 31.6952 is called "border". The border property can be set on classes, ids or directly on the HTML element.

This example shows the color as border, it can be applied via the CSS property "border" or "border-color".

```
.border, #border, table{ border:4px solid rgb(186, 146, 146) }
```


If only the border color should be changed use the property `border-color`.

```
.border{ border-color:rgb(186, 146, 146) }
```

If you want to add a box shadow in that color use:

Here you see how a box with a 4 pixel `rgb(186, 146, 146)` colored shadow looks like.

```
.boxshadow{ -moz-box-shadow:4px 4px 4px  
4px rgb(186, 146, 146); -webkit-box-  
shadow:4px 4px 4px 4px rgb(186, 146, 146);  
box-shadow:4px 4px 4px 4px rgb(186, 146,  
146) }
```

Background

The CSS property to change the background color of an element to XYZ 35.7169, 33.0722, 31.6952 is called "background". The background property can be set on classes, ids or directly on the HTML element.

```
.background, #background, body{  
background: rgb(186, 146, 146) }
```

If only the background color should be changed can be used:

```
.background{ background-color: rgb(186,  
146, 146) }
```

This example shows the color as background, it is applied via the CSS property "background".

To optimize and compress your CSS code, you can use our [online CSS compressor and optimizer](#) based on csstidy. If you want to create a linear or radial gradient as background or border, check our [CSS Gradient Generator](#).

Hey! You found this booklet interesting? Support Converting Colors with the new Membership Option!

The pro membership hides all ads, plus gives you double the colors in the color bucket, and more awesome pro features!

[Learn more, Memberships starting at \\$2.50/m!](#)

**Follow me
on Twitter!**

@ConvertingColor