

Converting Colors

XYZ(35.7731, 34.5122, 36.1642)

Have a look what the booklet for
XYZ(35.7731, 34.5122, 36.1642)
contains.

XYZ(35.8194, 34.4405, 36.2123)	3
<i>Conversions</i>	4
<i>Details</i>	6
<i>Harmonies</i>	12
<i>Previews</i>	24
<i>Color Blindness Simulation</i>	28
<i>CSS Examples</i>	31

Color

**XYZ(35.8194, 34.4405,
36.2123)**

Conversions

Conversions Part 1

Format	Color
Hex	B3989C
RGB	179, 152, 156
RGB Percent	70%, 60%, 61%
CMY	0.2980, 0.4039, 0.3882
CMYK	0.00, 0.15, 0.13, 0.30
HSL	351°, 15%, 65%
HSV	351°, 15%, 70%
XYZ	35.8194, 34.4405, 36.2123
YIQ	160.5290, 14.8080, 6.9680

Conversions

Conversions Part 2

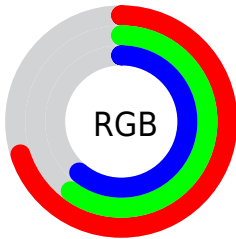
Format	Color
RYB	179, 152, 156
Decimal	11770012
CIELab	65.31, 10.68, 1.62
CIElCh	65, 10.803, 8.642
Yxy	34.4405, 0.3364, 0.3235
Android (android.graphics.Color)	4289960092 (0xFFB3989C)
YUV	160.5290, -2.2328, 16.1991
Hunter-Lab	58.6860, 6.2481, 4.4952

Details

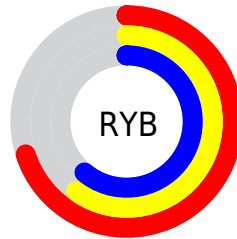
The XYZ color **35.8194, 34.4405, 36.2123** is a light color, and the websafe version is hex **CC9999**. A complement of this color would be **36.8082, 42.0116, 46.7285**, and the grayscale version is **33.6639, 35.4171, 38.5692**.

A 20% lighter version of the original color is **67.9651, 66.4579, 70.2183**, and **15.8077, 14.7629, 15.3810** is the 20% darker color. If you saturate the color by 10%, you get **31.9193, 28.5785, 28.9362**, and if you desaturate by 10%, it is **40.3220, 41.2473, 44.4900**.

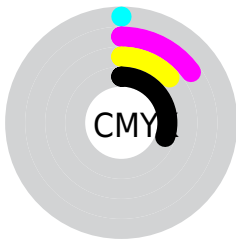
Distribution



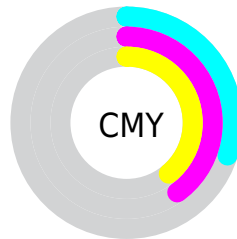
- Red (70%)
- Green (60%)
- Blue (61%)



- Red (70%)
- Yellow (60%)
- Blue (61%)



- Cyan (0%)
- Magenta (15%)
- Yellow (13%)
- Black (30%)



- Cyan (30%)
- Magenta (40%)
- Yellow (39%)

Brightness & Saturation Gradients

These gradients show how the XYZ color 35.8194, 34.4405, 36.2123 changes by changing the brightness by 10 percent. The first figure shows a shift by +10% for each color and the second figure -10%.

Similar to the brightness gradients but the following saturation gradients show a change of the XYZ color 35.8194, 34.4405, 36.2123 by changing the saturation by 10% instead.

■ 35.8194, 34.4405,
36.2123

■ 35.8194, 34.4405,
36.2123

319.6155,
322.0918, 344.9530

■ 24.4642, 23.2322,
24.3072

■ 68.0789, 66.6181,
70.5323

■ 15.8049, 14.7651,
15.3474

■ 89.7140, 88.3562,
93.7844

■ 9.4762, 8.6547,
8.9142

115.5063,
114.3730, 121.6558

■ 5.1126, 4.5166,
4.5892

145.8214,
145.0530, 154.5652

■ 2.3489, 1.9666,
1.9538

181.0245,
180.7804, 192.9311

■ 0.8195, 0.5879,
0.5267

221.4809,

■ 0.0000, 0.0000,

221.9398, 237.1720

0.0000

267.5562,
268.9154, 287.7064

■ 35.8194, 34.4405,
36.2123

■ 35.8194, 34.4405,
36.2123

■ 31.9193, 28.5785,
28.9362

■ 40.3220, 41.2473,
44.4900

■ 28.5933, 23.6152,
22.6214

■ 45.4484, 49.0333,
53.8032

■ 25.8149, 19.5075,
17.2283

■ 51.2221, 57.8368,
64.1867

■ 23.5545, 16.2067,
12.7135

■ 57.6646, 67.6927,
75.6732

■ 21.7795, 13.6596,
9.0299

■ 64.7967, 78.6341,
88.2940

■ 20.4536, 11.8064,
6.1264

■ 71.2166, 87.8502,
101.6051

■ 19.5354, 10.5780,
3.9457

■ 72.4006, 88.3238,
107.8400

■ 18.9749, 9.8904,
2.4224

■ 18.7827, 9.6606,
1.8816

Harmonies

Analogous

The Analogous color harmony consists of three colors that are next to each other on the color wheel.



35.6355, 34.4405, 40.7465



35.8194, 34.4405, 36.2123



35.1563, 34.4405, 32.3428

Triad

The Triadic color harmony groups three colors that are evenly spaced from another and form a triangle on the color wheel.



35.8194, 34.4405, 36.2123



30.8806, 34.4405, 31.1281



31.6446, 34.4405, 46.1668

Complementary

The Complementary color scheme is a pair of colors which are on the opposite of each other on the color wheel.



35.8194, 34.4405, 36.2123



36.8082, 42.0116, 46.7285

Split Complementary

Split-complementary colors differ from the complementary color scheme. The scheme consists of three colors, the original color and two neighbors of the complement color.



30.4269, 34.4405, 43.1779



35.8194, 34.4405, 36.2123



29.9957, 34.4405, 34.4304

Square

The Square scheme is like the rectangle color scheme, but the four colors are evenly spaced on the color wheel.



35.8194, 34.4405, 36.2123



32.2819, 34.4405, 29.5656



29.8323, 34.4405, 38.8176



33.1916, 34.4405, 46.7400

Rectangle

The Rectangle color scheme consists of four colors that form a rectangle on the color wheel.



35.8194, 34.4405, 36.2123



34.3353, 34.4405, 30.5735



29.8323, 34.4405, 38.8176



31.1846, 34.4405, 45.4004

Sweetspot

The Sweet Spot groups the original color and five complimentary colors.



35.8204, 34.4420, 36.2130



72.2127, 73.8686, 79.6754



37.0340, 34.8209, 47.4174



15.8668, 16.1656, 17.4108



86.6293, 91.1408, 99.2523



17.0014, 17.8868, 19.4787

Same Dimension

The Same Dimension uses a secret algorithm to generate beautiful new colors.



35.8204, 34.4420, 36.2130



61.7861, 58.1197, 60.4641



37.0826, 37.4993, 34.9913



8.5459, 8.5251, 9.1073



13.2880, 6.8328, 1.4109



0.4340, 0.2214, 0.1283

Inverse Universe

The Inverse Universe completely reimagines the original color for something new.



35.8204, 34.4420, 36.2130



61.7861, 58.1197, 60.4641



35.3774, 38.5123, 48.2172



8.5459, 8.5251, 9.1073



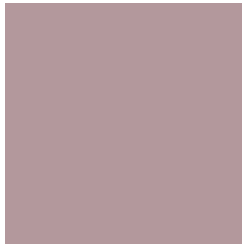
13.2880, 6.8328, 1.4109



0.4340, 0.2214, 0.1283

Previews

White Background



This preview shows how the XYZ color 35.8194, 34.4405, 36.2123 looks on a white background.

Color Contrast Check

Large Text (above 18pt) WCAG AA × Fail

Any Text WCAG AA × Fail

Large Text (above 18pt) WCAG AAA × Fail

Any Text WCAG AAA × Fail

Black Background



This preview shows how the XYZ color 35.8194, 34.4405, 36.2123 looks on a black background.

Color Contrast Check

Large Text (above 18pt) WCAG AA ✓ Pass

Any Text WCAG AA ✓ Pass

Large Text (above 18pt) WCAG AAA ✓ Pass

Any Text WCAG AAA ✓ Pass

If you want to check with other color combinations, try the [Color Contrast Checker](#).

XYZ 35.8194, 34.4405, 36.2123

Background



This preview shows how black text looks on a background with the XYZ color 35.8194, 34.4405, 36.2123.



This preview shows how white text looks on a background with the XYZ color 35.8194, 34.4405,

Color Blindness Simulation

Color vision deficiency is a very complex topic, and I could not describe the different causes any better than Wikipedia does, so if you want to learn more, you should check out their [article about color blindness](#).

Dichromacy



Original Color

35.8194, 34.4405, 36.2123

Protanopia

33.1828, 34.5340, 37.7177

Deuteranopia

35.2355, 34.6255, 36.2788



Tritanopia

36.4999, 34.4809, 39.3821

Trichromacy



Original Color

35.8194, 34.4405, 36.2123

Protanomaly

34.2085, 34.5704, 37.2175

Deuteranomaly

35.2965, 34.4129, 36.2345

Tritanomaly

36.2342, 34.3746, 37.9829

Monochromacy



Original Color

35.8194, 34.4405, 36.2123

Achromatopsia

33.8758, 35.6400, 38.8120

Achromatomaly

34.6333, 35.2818, 37.7856

CSS Examples

Text

The CSS property to change the color of the text to XYZ 35.8194, 34.4405, 36.2123 is called "color". The color property can be set on classes, ids or directly on the HTML element.

This example shows how text in the color `rgb(179, 152, 156)` looks like.

```
.text, #text, p{  
    color:rgb(179, 152, 156)  
}
```

If you want to add a text shadow in that color use the text-shadow property, you can generate a text shadow directly with our [CSS Text Shadow Generator](#).

Here you see how black text with a 4 pixel rgb(179, 152, 156) colored shadow looks like.

```
.shadow{ text-shadow: 4px 4px 2px rgb(179, 152, 156) }
```

Border

The CSS property to change the border of an element to XYZ 35.8194, 34.4405, 36.2123 is called "border". The border property can be set on classes, ids or directly on the HTML element.

This example shows the color as border, it can be applied via the CSS property "border" or "border-color".

```
.border, #border, table{ border:4px solid rgb(179, 152, 156) }
```


If only the border color should be changed use the property `border-color`.

```
.border{ border-color:rgb(179, 152, 156) }
```

If you want to add a box shadow in that color use:

Here you see how a box with a 4 pixel `rgb(179, 152, 156)` colored shadow looks like.

```
.boxshadow{ -moz-box-shadow:4px 4px 4px  
4px rgb(179, 152, 156); -webkit-box-  
shadow:4px 4px 4px 4px rgb(179, 152, 156);  
box-shadow:4px 4px 4px 4px rgb(179, 152,  
156) }
```

Background

The CSS property to change the background color of an element to XYZ 35.8194, 34.4405, 36.2123 is called "background". The background property can be set on classes, ids or directly on the HTML element.

```
.background, #background, body{  
background: rgb(179, 152, 156) }
```

If only the background color should be changed can be used:

```
.background{ background-color: rgb(179,  
152, 156) }
```

This example shows the color as background, it is applied via the CSS property "background".

To optimize and compress your CSS code, you can use our [online CSS compressor and optimizer](#) based on csstidy. If you want to create a linear or radial gradient as background or border, check our [CSS Gradient Generator](#).

Hey! You found this booklet interesting? Support Converting Colors with the new Membership Option!

The pro membership hides all ads, plus gives you double the colors in the color bucket, and more awesome pro features!

[Learn more, Memberships starting at \\$2.50/m!](#)

**Follow me
on Twitter!**

@ConvertingColor