

Converting Colors

XYZ(35.7784, 36.3179, 42.8440)

Have a look what the booklet for
XYZ(35.7784, 36.3179, 42.8440)
contains.

XYZ(35.6686, 36.2217, 42.6477)	3
<i>Conversions</i>	4
<i>Details</i>	6
<i>Harmonies</i>	12
<i>Previews</i>	24
<i>Color Blindness Simulation</i>	28
<i>CSS Examples</i>	31

Color

**XYZ(35.6686, 36.2217,
42.6477)**

Conversions

Conversions Part 1

Format	Color
Hex	A7A0A9
RGB	167, 160, 169
RGB Percent	65%, 63%, 66%
CMY	0.3451, 0.3725, 0.3373
CMYK	0.01, 0.05, 0.00, 0.34
HSL	287°, 5%, 65%
HSV	287°, 5%, 66%
XYZ	35.6686, 36.2217, 42.6477
YIQ	163.1190, 1.2830, 4.2830

Conversions

Conversions Part 2

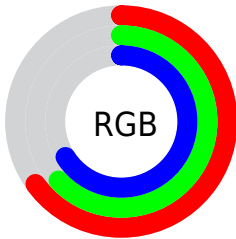
Format	Color
RYB	167, 160, 169
Decimal	10985641
CIELab	66.69, 4.23, -3.77
CIElCh	67, 5.665, 318.337
Yxy	36.2217, 0.3114, 0.3162
Android (android.graphics.Color)	4289175721 (0xFFA7A0A9)
YUV	163.1190, 2.8993, 3.4036
Hunter-Lab	60.1845, 0.4660, 0.1153

Details

The XYZ color **35.6686, 36.2217, 42.6477** is a light color, and the websafe version is hex **999999**. A complement of this color would be **35.4348, 38.5964, 38.8418**, and the grayscale version is **34.8562, 36.6714, 39.9351**.

A 20% lighter version of the original color is **67.8792, 69.5123, 80.3606**, and **15.7498, 15.8665, 19.0621** is the 20% darker color. If you saturate the color by 10%, you get **32.1539, 30.3531, 41.7007**, and if you desaturate by 10%, it is **39.6067, 42.9018, 43.7301**.

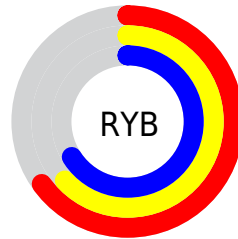
Distribution



Red (65%)

Green (63%)

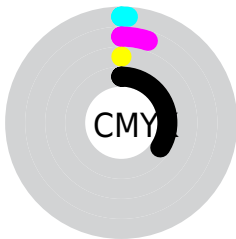
Blue (66%)



Red (65%)

Yellow (63%)

Blue (66%)

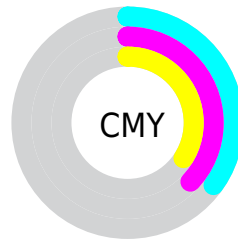


Cyan (1%)

Magenta (5%)

Yellow (0%)

Black (34%)



Cyan (35%)

Magenta (37%)

Yellow (34%)

Brightness & Saturation Gradients

These gradients show how the XYZ color 35.6686, 36.2217, 42.6477 changes by changing the brightness by 10 percent. The first figure shows a shift by +10% for each color and the second figure -10%.

Similar to the brightness gradients but the following saturation gradients show a change of the XYZ color 35.6686, 36.2217, 42.6477 by changing the saturation by 10% instead.

■ 35.6686, 36.2217,
42.6477

■ 35.6686, 36.2217,
42.6477

318.9663,
329.9285, 373.0395

■ 24.3473, 24.6055,
29.2794

■ 67.8475, 69.3741,
80.4596

■ 15.7176, 15.7834,
19.0449

■ 89.4357, 91.6791,
105.7403

■ 9.4141, 9.3710,
11.5256

115.1770,
118.3158, 135.8289

■ 5.0715, 4.9839,
6.3029

145.4367,
149.6685, 171.1440

■ 2.3245, 2.2378,
2.9584

180.5801,
186.1218, 212.1041

■ 0.8071, 0.7405,
1.0734

220.9726,

■ 0.0000, 0.0000,

228.0600, 259.1276

0.0000

266.9795,
275.8674, 312.6333

■ 35.6686, 36.2217,
42.6477

■ 35.6686, 36.2217,
42.6477

■ 32.1539, 30.3531,
41.7007

■ 39.6067, 42.9018,
43.7301

■ 29.0434, 25.2594,
40.8815

■ 43.9803, 50.4191,
44.9505

■ 26.3209, 20.9079,
40.1851

■ 48.8050, 58.8036,
46.3146

■ 23.9677, 17.2619,
39.6053

■ 54.0944, 68.0826,
47.8269

■ 21.9639, 14.2815,
39.1357

■ 59.8619, 78.2824,
49.4916

■ 20.2873, 11.9227,
38.7687

■ 64.0426, 85.2729,
50.6206

■ 18.9131, 10.1363,
38.4964

■ 64.9902, 85.7614,
50.6650

■ 17.8127, 8.8653,
38.3090

■ 65.9622, 86.2625,
50.7104

■ 16.9501, 8.0381,
38.1948

■ 66.9587, 86.7762,
50.7571

Harmonies

Analogous

The Analogous color harmony consists of three colors that are next to each other on the color wheel.



34.9467, 36.2217, 44.0722



35.6686, 36.2217, 42.6477



36.0604, 36.2217, 40.3973

Triad

The Triadic color harmony groups three colors that are evenly spaced from another and form a triangle on the color wheel.



35.6686, 36.2217, 42.6477



34.7606, 36.2217, 35.0119



32.8928, 36.2217, 40.9369

Complementary

The Complementary color scheme is a pair of colors which are on the opposite of each other on the color wheel.



35.6686, 36.2217, 42.6477



35.4348, 38.5964, 38.8418

Split Complementary

Split-complementary colors differ from the complementary color scheme. The scheme consists of three colors, the original color and two neighbors of the complement color.



32.8449, 36.2217, 38.4965



35.6686, 36.2217, 42.6477



33.9138, 36.2217, 35.1429

Square

The Square scheme is like the rectangle color scheme, but the four colors are evenly spaced on the color wheel.



35.6686, 36.2217, 42.6477



35.5304, 36.2217, 36.0303



33.2158, 36.2217, 36.3959



33.3479, 36.2217, 43.0567

Rectangle

The Rectangle color scheme consists of four colors that form a rectangle on the color wheel.



35.6686, 36.2217, 42.6477



36.0775, 36.2217, 38.7615



33.2158, 36.2217, 36.3959



32.8289, 36.2217, 40.1249

Sweetspot

The Sweet Spot groups the original color and five complimentary colors.



35.6696, 36.2233, 42.6485



66.1150, 68.6430, 76.9899



34.5981, 36.2157, 42.7035



14.4276, 14.9906, 16.7852



80.6108, 84.8088, 92.3568



14.7206, 15.4872, 16.8656

Same Dimension

The Same Dimension uses a secret algorithm to generate beautiful new colors.



35.6696, 36.2233, 42.6485



63.3611, 63.9974, 76.2383



35.8722, 36.3535, 41.4928



7.9022, 7.9599, 9.5383



12.4105, 5.7813, 28.4373



0.3412, 0.1609, 0.6937

Inverse Universe

The Inverse Universe completely reimagines the original color for something new.



35.4559, 36.1870, 39.3004



62.9262, 63.9244, 69.3872



35.2437, 38.4734, 39.9392



7.8445, 7.9503, 8.6273



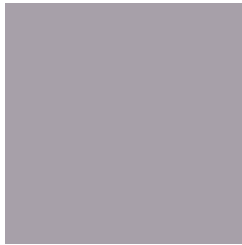
12.4675, 6.3957, 2.0073



0.3215, 0.1629, 0.1447

Previews

White Background



This preview shows how the XYZ color 35.6686, 36.2217, 42.6477 looks on a white background.

Color Contrast Check

Large Text (above 18pt) WCAG AA × Fail

Any Text WCAG AA × Fail

Large Text (above 18pt) WCAG AAA × Fail

Any Text WCAG AAA × Fail

Black Background



This preview shows how the XYZ color 35.6686, 36.2217, 42.6477 looks on a black background.

Color Contrast Check

Large Text (above 18pt) WCAG AA ✓ Pass

Any Text WCAG AA ✓ Pass

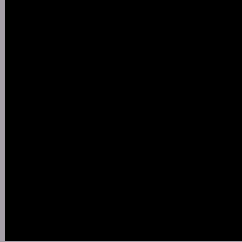
Large Text (above 18pt) WCAG AAA ✓ Pass

Any Text WCAG AAA ✓ Pass

If you want to check with other color combinations, try the [Color Contrast Checker](#).

XYZ 35.6686, 36.2217, 42.6477

Background



This preview shows how black text looks on a background with the XYZ color 35.6686, 36.2217, 42.6477.



This preview shows how white text looks on a background with the XYZ color 35.6686, 36.2217,

Color Blindness Simulation

Color vision deficiency is a very complex topic, and I could not describe the different causes any better than Wikipedia does, so if you want to learn more, you should check out their [article about color blindness](#).

Dichromacy



Original Color

35.6686, 36.2217, 42.6477

Protanopia

35.1048, 36.1785, 43.1631

Deuteranopia

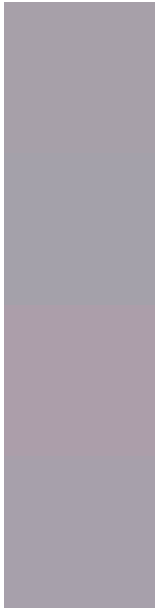
36.9919, 36.1302, 43.0544



Tritanopia

35.9535, 36.3357, 44.1483

Trichromacy



Original Color

35.6686, 36.2217, 42.6477

Protanomaly

35.3104, 36.2845, 43.1728

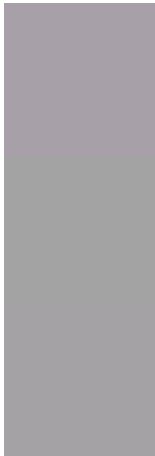
Deuteranomaly

36.4958, 36.1267, 43.0798

Tritanomaly

35.8578, 36.2974, 43.6443

Monochromacy



Original Color

35.6686, 36.2217, 42.6477

Achromatopsia

34.8123, 36.6253, 39.8849

Achromatomaly

35.0217, 36.4498, 40.7870

CSS Examples

Text

The CSS property to change the color of the text to XYZ 35.6686, 36.2217, 42.6477 is called "color". The color property can be set on classes, ids or directly on the HTML element.

This example shows how text in the color `rgb(167, 160, 169)` looks like.

```
.text, #text, p{  
    color:rgb(167, 160, 169)  
}
```

If you want to add a text shadow in that color use the text-shadow property, you can generate a text shadow directly with our [CSS Text Shadow Generator](#).

Here you see how black text with a 4 pixel rgb(167, 160, 169) colored shadow looks like.

```
.shadow{ text-shadow: 4px 4px 2px rgb(167, 160, 169) }
```

Border

The CSS property to change the border of an element to XYZ 35.6686, 36.2217, 42.6477 is called "border". The border property can be set on classes, ids or directly on the HTML element.

This example shows the color as border, it can be applied via the CSS property "border" or "border-color".

```
.border, #border, table{ border:4px solid rgb(167, 160, 169) }
```


If only the border color should be changed use the property `border-color`.

```
.border{ border-color:rgb(167, 160, 169) }
```

If you want to add a box shadow in that color use:

Here you see how a box with a 4 pixel `rgb(167, 160, 169)` colored shadow looks like.

```
.boxshadow{ -moz-box-shadow:4px 4px 4px  
4px rgb(167, 160, 169); -webkit-box-  
shadow:4px 4px 4px 4px rgb(167, 160, 169);  
box-shadow:4px 4px 4px 4px rgb(167, 160,  
169) }
```

Background

The CSS property to change the background color of an element to XYZ 35.6686, 36.2217, 42.6477 is called "background". The background property can be set on classes, ids or directly on the HTML element.

```
.background, #background, body{  
background: rgb(167, 160, 169) }
```

If only the background color should be changed can be used:

```
.background{ background-color: rgb(167,  
160, 169) }
```

This example shows the color as background, it is applied via the CSS property "background".

To optimize and compress your CSS code, you can use our [online CSS compressor and optimizer](#) based on csstidy. If you want to create a linear or radial gradient as background or border, check our [CSS Gradient Generator](#).

Hey! You found this booklet interesting? Support Converting Colors with the new Membership Option!

The pro membership hides all ads, plus gives you double the colors in the color bucket, and more awesome pro features!

[Learn more, Memberships starting at \\$2.50/m!](#)

**Follow me
on Twitter!**

@ConvertingColor