

Converting Colors

XYZ(35.8633, 32.9838, 30.4755)

Have a look what the booklet for
XYZ(35.8633, 32.9838, 30.4755)
contains.

XYZ(35.8224, 32.9253, 30.4538)	3
<i>Conversions</i>	4
<i>Details</i>	6
<i>Harmonies</i>	12
<i>Previews</i>	24
<i>Color Blindness Simulation</i>	28
<i>CSS Examples</i>	31

Color

**XYZ(35.8224, 32.9253,
30.4538)**

Conversions

Conversions Part 1

Format	Color
Hex	BC918F
RGB	188, 145, 143
RGB Percent	74%, 57%, 56%
CMY	0.2627, 0.4314, 0.4392
CMYK	0.00, 0.23, 0.24, 0.26
HSL	3°, 25%, 65%
HSV	3°, 24%, 74%
XYZ	35.8224, 32.9253, 30.4538
YIQ	157.6290, 26.2700, 8.4940

Conversions

Conversions Part 2

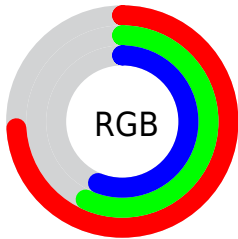
Format	Color
RYB	188, 145, 143
Decimal	12358031
CIELab	64.10, 15.91, 7.31
CIELCh	64, 17.506, 24.678
Yxy	32.9253, 0.3611, 0.3319
Android (android.graphics.Color)	4290548111 (0xFFBC918F)
YUV	157.6290, -7.2121, 26.6354
Hunter-Lab	57.3806, 11.0206, 8.6992

Details

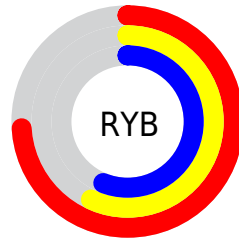
The XYZ color **35.8224, 32.9253, 30.4538** is a light color, and the websafe version is hex **CC9999**. A complement of this color would be **37.9634, 44.5873, 54.1826**, and the grayscale version is **32.3554, 34.0404, 37.0700**.

A 20% lighter version of the original color is **68.1577, 64.2905, 61.6403**, and **15.8100, 13.8641, 12.1987** is the 20% darker color. If you saturate the color by 10%, you get **31.9847, 27.3412, 22.7271**, and if you desaturate by 10%, it is **40.3346, 39.4759, 39.5836**.

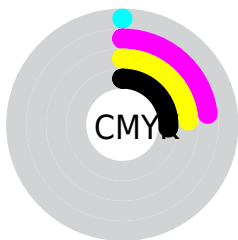
Distribution



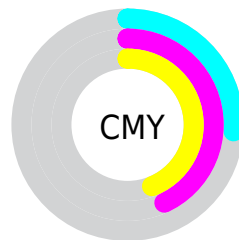
- Red (74%)
- Green (57%)
- Blue (56%)



- Red (74%)
- Yellow (57%)
- Blue (56%)



- Cyan (0%)
- Magenta (23%)
- Yellow (24%)
- Black (26%)





- Cyan (26%)
- Magenta (43%)
- Yellow (44%)

Brightness & Saturation Gradients

These gradients show how the XYZ color 35.8224, 32.9253, 30.4538 changes by changing the brightness by 10 percent. The first figure shows a shift by +10% for each color and the second figure -10%.


Similar to the brightness gradients but the following saturation gradients show a change of the XYZ color 35.8224, 32.9253, 30.4538 by changing the saturation by 10% instead.


 35.8224, 32.9253,
30.4538


 35.8224, 32.9253,
30.4538

319.6284,
315.3130, 318.2869

 24.4665, 22.0692,
19.9283


 68.0835, 64.2589,
61.4486

 15.8067, 13.9078,
12.1594


 89.7195, 85.5052,
82.7549

 9.4774, 8.0565,
6.7285


115.5129,
110.9837, 108.4920

 5.1135, 4.1312,
3.2170

145.8290,
141.0788, 139.0783

 2.3494, 1.7472,
1.2065

181.0333,
176.1749, 174.9324

 0.8198, 0.4539,
0.0000

221.4910,

 0.0000, 0.0000,

216.6563, 216.4729

0.0000

267.5676,
262.9076, 264.1182

■ 35.8224, 32.9253,
30.4538

■ 35.8224, 32.9253,
30.4538

■ 31.9847, 27.3412,
22.7271

■ 40.3346, 39.4759,
39.5836

■ 28.7867, 22.6736,
16.3321

■ 45.5486, 47.0309,
50.1791

■ 26.1942, 18.8749,
11.1942

■ 51.4937, 55.6316,
62.3014

■ 24.1691, 15.8915,
7.2305

■ 58.1965, 65.3159,
76.0079

■ 22.6688, 13.6636,
4.3484

■ 65.6823, 76.1196,
91.3526

■ 21.6447, 12.1234,
2.4410

■ 73.8460, 88.0251,
107.7062

■ 21.0393, 11.1912,
1.3801

■ 74.5492, 89.4314,
107.9406

■ 20.8300, 10.8731,
1.0009

Harmonies

Analogous

The Analogous color harmony consists of three colors that are next to each other on the color wheel.



36.2776, 32.9253, 37.1294



35.8224, 32.9253, 30.4538



34.1282, 32.9253, 25.8373

Triad

The Triadic color harmony groups three colors that are evenly spaced from another and form a triangle on the color wheel.



35.8224, 32.9253, 30.4538



27.5689, 32.9253, 28.5314



30.8551, 32.9253, 51.2099

Complementary

The Complementary color scheme is a pair of colors which are on the opposite of each other on the color wheel.



35.8224, 32.9253, 30.4538



37.9634, 44.5873, 54.1826

Split Complementary

Split-complementary colors differ from the complementary color scheme. The scheme consists of three colors, the original color and two neighbors of the complement color.



28.6222, 32.9253, 48.1638



35.8224, 32.9253, 30.4538



26.7900, 32.9253, 34.6004

Square

The Square scheme is like the rectangle color scheme, but the four colors are evenly spaced on the color wheel.



35.8224, 32.9253, 30.4538



29.3487, 32.9253, 24.8342



27.1652, 32.9253, 41.8488



33.3244, 32.9253, 49.7198

Rectangle

The Rectangle color scheme consists of four colors that form a rectangle on the color wheel.



35.8224, 32.9253, 30.4538



32.5693, 32.9253, 24.2434



27.1652, 32.9253, 41.8488



30.0534, 32.9253, 50.6717

Sweetspot

The Sweet Spot groups the original color and five complimentary colors.



35.8233, 32.9268, 30.4545



79.4044, 80.6813, 84.5425



39.4781, 33.9032, 51.1972



16.9514, 17.1703, 17.9281



90.7827, 95.5105, 104.0109



18.6292, 19.5994, 21.3438

Same Dimension

The Same Dimension uses a secret algorithm to generate beautiful new colors.



35.8233, 32.9268, 30.4545



60.9236, 53.8569, 47.1307



39.5161, 40.3124, 31.6854



9.5633, 9.6026, 9.9261



14.1966, 7.4320, 0.6863



0.5679, 0.3147, 0.0308

Inverse Universe

The Inverse Universe completely reimagines the original color for something new.



37.9634, 44.5873, 54.1826



65.5087, 78.8469, 97.9925



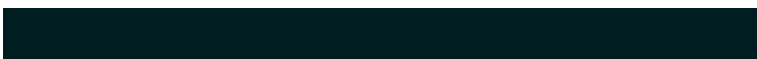
33.6807, 36.0219, 52.7551



9.7712, 10.7347, 12.2292



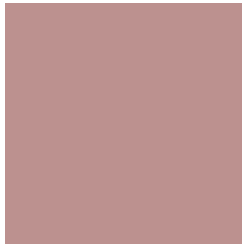
17.2567, 24.6251, 36.2365



0.6873, 0.9873, 1.4232

Previews

White Background



This preview shows how the XYZ color 35.8224, 32.9253, 30.4538 looks on a white background.

Color Contrast Check

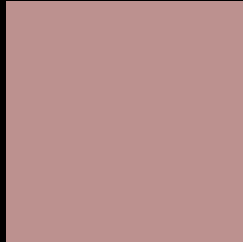
Large Text (above 18pt) WCAG AA × Fail

Any Text WCAG AA × Fail

Large Text (above 18pt) WCAG AAA × Fail

Any Text WCAG AAA × Fail

Black Background



This preview shows how the XYZ color 35.8224, 32.9253, 30.4538 looks on a black background.

Color Contrast Check

Large Text (above 18pt) WCAG AA ✓ Pass

Any Text WCAG AA ✓ Pass

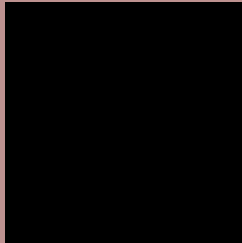
Large Text (above 18pt) WCAG AAA ✓ Pass

Any Text WCAG AAA ✓ Pass

If you want to check with other color combinations, try the [Color Contrast Checker](#).

XYZ 35.8224, 32.9253, 30.4538

Background



This preview shows how black text looks on a background with the XYZ color 35.8224, 32.9253, 30.4538.



This preview shows how white text looks on a background with the XYZ color 35.8224, 32.9253,

30.4538.

Color Blindness Simulation

Color vision deficiency is a very complex topic, and I could not describe the different causes any better than Wikipedia does, so if you want to learn more, you should check out their [article about color blindness](#).

Dichromacy



Original Color

35.8224, 32.9253, 30.4538

Protanopia

31.5638, 33.0544, 32.7335

Deuteranopia

33.6933, 32.9958, 30.1842



Tritanopia

36.6415, 32.7968, 34.9711

Trichromacy



Original Color

35.8224, 32.9253, 30.4538

Protanomaly

32.8325, 32.7546, 31.7859

Deuteranomaly

34.2948, 32.8361, 30.1217

Tritanomaly

36.4645, 32.9673, 33.2956

Monochromacy



Original Color

35.8224, 32.9253, 30.4538

Achromatopsia

32.4990, 34.1914, 37.2345

Achromatomaly

33.5032, 33.5174, 34.8407

CSS Examples

Text

The CSS property to change the color of the text to XYZ 35.8224, 32.9253, 30.4538 is called "color". The color property can be set on classes, ids or directly on the HTML element.

This example shows how text in the color `rgb(188, 145, 143)` looks like.

```
.text, #text, p{  
    color:rgb(188, 145, 143)  
}
```

If you want to add a text shadow in that color use the text-shadow property, you can generate a text shadow directly with our [CSS Text Shadow Generator](#).

Here you see how black text with a 4 pixel rgb(188, 145, 143) colored shadow looks like.

```
.shadow{ text-shadow: 4px 4px 2px rgb(188, 145, 143) }
```

Border

The CSS property to change the border of an element to XYZ 35.8224, 32.9253, 30.4538 is called "border". The border property can be set on classes, ids or directly on the HTML element.

This example shows the color as border, it can be applied via the CSS property "border" or "border-color".

```
.border, #border, table{ border:4px solid rgb(188, 145, 143) }
```


If only the border color should be changed use the property `border-color`.

```
.border{ border-color:rgb(188, 145, 143) }
```

If you want to add a box shadow in that color use:

Here you see how a box with a 4 pixel `rgb(188, 145, 143)` colored shadow looks like.

```
.boxshadow{ -moz-box-shadow:4px 4px 4px  
4px rgb(188, 145, 143); -webkit-box-  
shadow:4px 4px 4px 4px rgb(188, 145, 143);  
box-shadow:4px 4px 4px 4px rgb(188, 145,  
143) }
```

Background

The CSS property to change the background color of an element to XYZ 35.8224, 32.9253, 30.4538 is called "background". The background property can be set on classes, ids or directly on the HTML element.

```
.background, #background, body{  
background: rgb(188, 145, 143) }
```

If only the background color should be changed can be used:

```
.background{ background-color: rgb(188,  
145, 143) }
```

This example shows the color as background, it is applied via the CSS property "background".

To optimize and compress your CSS code, you can use our [online CSS compressor and optimizer](#) based on csstidy. If you want to create a linear or radial gradient as background or border, check our [CSS Gradient Generator](#).

Hey! You found this booklet interesting? Support Converting Colors with the new Membership Option!

The pro membership hides all ads, plus gives you double the colors in the color bucket, and more awesome pro features!

[Learn more, Memberships starting at \\$2.50/m!](#)

**Follow me
on Twitter!**

@ConvertingColor