

Converting Colors

XYZ(35.8827, 34.1877, 33.6868)

Have a look what the booklet for
XYZ(35.8827, 34.1877, 33.6868)
contains.

XYZ(35.8630, 34.2803, 33.5807)	3
<i>Conversions</i>	4
<i>Details</i>	6
<i>Harmonies</i>	12
<i>Previews</i>	24
<i>Color Blindness Simulation</i>	28
<i>CSS Examples</i>	31

Color

**XYZ(35.8630, 34.2803,
33.5807)**

Conversions

Conversions Part 1

Format	Color
Hex	B69796
RGB	182, 151, 150
RGB Percent	71%, 59%, 59%
CMY	0.2863, 0.4078, 0.4118
CMYK	0.00, 0.17, 0.18, 0.29
HSL	2°, 18%, 65%
HSV	2°, 18%, 71%
XYZ	35.8630, 34.2803, 33.5807
YIQ	160.1550, 18.7970, 6.2610

Conversions

Conversions Part 2

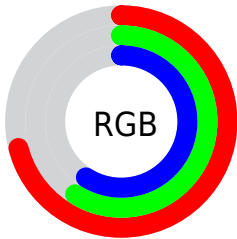
Format	Color
R_{YB}	182, 151, 150
Decimal	11966358
CIE _{Lab}	65.18, 11.37, 4.85
CIE _{LCh}	65, 12.361, 23.086
Yxy	34.2803, 0.3458, 0.3305
Android (android.graphics.Color)	4290156438 (0xFFB69796)
YUV	160.1550, -5.0064, 19.1581
Hunter-Lab	58.5494, 6.8744, 6.9791

Details

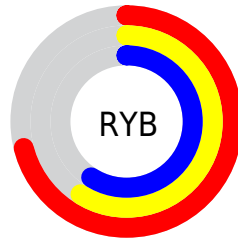
The XYZ color **35.8630, 34.2803, 33.5807** is a light color, and the websafe version is hex **CC9999**. A complement of this color would be **37.5447, 42.9080, 50.5595**, and the grayscale version is **33.5021, 35.2469, 38.3838**.

A 20% lighter version of the original color is **67.9903, 66.1994, 66.3210**, and **15.8626, 14.6823, 13.8023** is the 20% darker color. If you saturate the color by 10%, you get **31.8817, 28.4836, 25.5760**, and if you desaturate by 10%, it is **40.4981, 41.0197, 42.9272**.

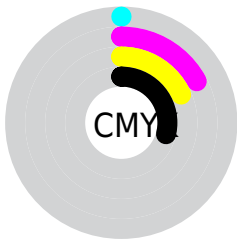
Distribution



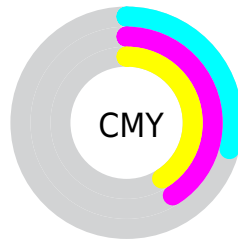
- Red (71%)
- Green (59%)
- Blue (59%)



- Red (71%)
- Yellow (59%)
- Blue (59%)



- Cyan (0%)
- Magenta (17%)
- Yellow (18%)
- Black (29%)





- Cyan (29%)
- Magenta (41%)
- Yellow (41%)

Brightness & Saturation Gradients


These gradients show how the XYZ color 35.8630, 34.2803, 33.5807 changes by changing the brightness by 10 percent. The first figure shows a shift by +10% for each color and the second figure -10%.

Similar to the brightness gradients but the following saturation gradients show a change of the XYZ color 35.8630, 34.2803, 33.5807 by changing the saturation by 10% instead.


 35.8630, 34.2803,
33.5807


 35.8630, 34.2803,
33.5807


319.8030,
321.3801, 332.9702

 24.4980, 23.1090,
22.2969


 68.1458, 66.3693,
66.4075

 15.8302, 14.6740,
13.8748


 89.7944, 88.0558,
88.7876

 9.4942, 8.5909,
7.8959


115.6015,
114.0162, 115.7036

 5.1246, 4.4753,
3.9416

145.9325,
144.6349, 147.5740

 2.3560, 1.9429,
1.5934

181.1528,
180.2962, 184.8173

 0.8231, 0.5740,
0.2861

221.6278,

 0.0000, 0.0000,

221.3846, 227.8521

0.0000

267.7227,
268.2844, 277.0969

■ 35.8630, 34.2803,
33.5807

■ 35.8630, 34.2803,
33.5807

■ 31.8817, 28.4836,
25.5760

■ 40.4981, 41.0197,
42.9272

■ 28.5222, 23.5833,
18.8495

■ 45.8115, 48.7362,
53.6708

■ 25.7539, 19.5359,
13.3357

■ 51.8301, 57.4683,
65.8662

■ 23.5426, 16.2927,
8.9624

■ 58.5784, 67.2510,
79.5649

■ 21.8506, 13.8002,
5.6498

■ 66.0796, 78.1175,
94.8155

■ 20.6354, 11.9981,
3.3079

■ 73.1015, 88.6851,
107.8728

■ 19.8480, 10.8170,
1.8316

■ 19.4238, 10.1712,
1.0659

■ 19.3535, 10.0690,
0.9235

Harmonies

Analogous

The Analogous color harmony consists of three colors that are next to each other on the color wheel.



36.1317, 34.2803, 38.5285



35.8630, 34.2803, 33.5807



34.7005, 34.2803, 29.9643

Triad

The Triadic color harmony groups three colors that are evenly spaced from another and form a triangle on the color wheel.



35.8630, 34.2803, 33.5807



29.8990, 34.2803, 31.6957



32.1685, 34.2803, 48.0278

Complementary

The Complementary color scheme is a pair of colors which are on the opposite of each other on the color wheel.



35.8630, 34.2803, 33.5807



37.5447, 42.9080, 50.5595

Split Complementary

Split-complementary colors differ from the complementary color scheme. The scheme consists of three colors, the original color and two neighbors of the complement color.



30.5523, 34.2803, 45.8031



35.8630, 34.2803, 33.5807



29.2735, 34.2803, 36.1477

Square

The Square scheme is like the rectangle color scheme, but the four colors are evenly spaced on the color wheel.



35.8630, 34.2803, 33.5807



31.2472, 34.2803, 28.9478



29.5082, 34.2803, 41.3387



33.9551, 34.2803, 47.1810

Rectangle

The Rectangle color scheme consists of four colors that form a rectangle on the color wheel.



35.8630, 34.2803, 33.5807



33.5973, 34.2803, 28.6415



29.5082, 34.2803, 41.3387



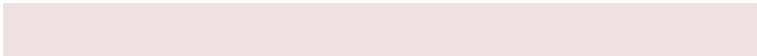
31.5882, 34.2803, 47.6080

Sweetspot

The Sweet Spot groups the original color and five complimentary colors.



35.8639, 34.2818, 33.5814



75.7109, 77.6929, 82.4494



38.5865, 35.1136, 48.7116



16.5787, 16.9514, 17.9205



88.6918, 93.3107, 101.6153



17.8044, 18.7317, 20.3988

Same Dimension

The Same Dimension uses a secret algorithm to generate beautiful new colors.



35.8639, 34.2818, 33.5814



62.1605, 57.9898, 55.1265



38.5301, 39.6142, 34.4701



9.0266, 9.0561, 9.3792



13.6763, 7.1290, 0.6552



0.4898, 0.2667, 0.0257

Inverse Universe

The Inverse Universe completely reimagines the original color for something new.



37.5447, 42.9080, 50.5595



65.7639, 76.4861, 91.5329



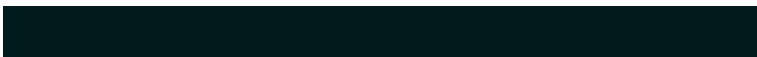
34.5610, 36.9407, 49.5649



9.2419, 10.1610, 11.5536



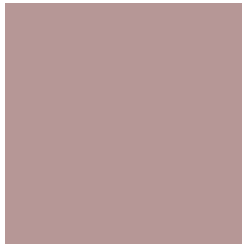
16.9766, 24.4129, 35.0705



0.6061, 0.8758, 1.2388

Previews

White Background



This preview shows how the XYZ color 35.8630, 34.2803, 33.5807 looks on a white background.

Color Contrast Check

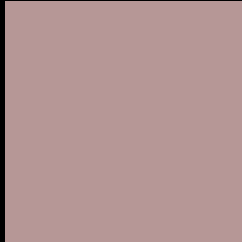
Large Text (above 18pt) WCAG AA × Fail

Any Text WCAG AA × Fail

Large Text (above 18pt) WCAG AAA × Fail

Any Text WCAG AAA × Fail

Black Background



This preview shows how the XYZ color 35.8630, 34.2803, 33.5807 looks on a black background.

Color Contrast Check

Large Text (above 18pt) WCAG AA ✓ Pass

Any Text WCAG AA ✓ Pass

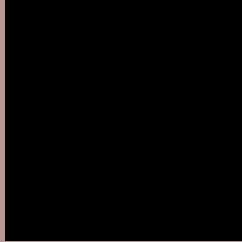
Large Text (above 18pt) WCAG AAA ✓ Pass

Any Text WCAG AAA ✓ Pass

If you want to check with other color combinations, try the [Color Contrast Checker](#).

XYZ 35.8630, 34.2803, 33.5807

Background



This preview shows how black text looks on a background with the XYZ color 35.8630, 34.2803, 33.5807.



This preview shows how white text looks on a background with the XYZ color 35.8630, 34.2803,

Color Blindness Simulation

Color vision deficiency is a very complex topic, and I could not describe the different causes any better than Wikipedia does, so if you want to learn more, you should check out their [article about color blindness](#).

Dichromacy



Original Color

35.8630, 34.2803, 33.5807

Protanopia

32.9599, 34.4682, 35.4877

Deuteranopia

35.0277, 34.3316, 33.6347



Tritanopia

36.7089, 34.1354, 38.3722

Trichromacy



Original Color

35.8630, 34.2803, 33.5807

Protanomaly

33.8333, 34.1776, 34.9507

Deuteranomaly

35.3237, 34.2422, 33.6018

Tritanomaly

36.5206, 34.3143, 36.5968

Monochromacy



Original Color

35.8630, 34.2803, 33.5807

Achromatopsia

33.4132, 35.1533, 38.2819

Achromatomaly

34.2062, 34.8391, 36.3742

CSS Examples

Text

The CSS property to change the color of the text to XYZ 35.8630, 34.2803, 33.5807 is called "color". The color property can be set on classes, ids or directly on the HTML element.

This example shows how text in the color `rgb(182, 151, 150)` looks like.

```
.text, #text, p{  
    color:rgb(182, 151, 150)  
}
```

If you want to add a text shadow in that color use the text-shadow property, you can generate a text shadow directly with our [CSS Text Shadow Generator](#).

Here you see how black text with a 4 pixel rgb(182, 151, 150) colored shadow looks like.

```
.shadow{ text-shadow: 4px 4px 2px rgb(182, 151, 150) }
```

Border

The CSS property to change the border of an element to XYZ 35.8630, 34.2803, 33.5807 is called "border". The border property can be set on classes, ids or directly on the HTML element.

This example shows the color as border, it can be applied via the CSS property "border" or "border-color".

```
.border, #border, table{ border:4px solid rgb(182, 151, 150) }
```


If only the border color should be changed use the property `border-color`.

```
.border{ border-color:rgb(182, 151, 150) }
```

If you want to add a box shadow in that color use:

Here you see how a box with a 4 pixel `rgb(182, 151, 150)` colored shadow looks like.

```
.boxshadow{ -moz-box-shadow:4px 4px 4px  
4px rgb(182, 151, 150); -webkit-box-  
shadow:4px 4px 4px 4px rgb(182, 151, 150);  
box-shadow:4px 4px 4px 4px rgb(182, 151,  
150) }
```

Background

The CSS property to change the background color of an element to XYZ 35.8630, 34.2803, 33.5807 is called "background". The background property can be set on classes, ids or directly on the HTML element.

```
.background, #background, body{  
background: rgb(182, 151, 150) }
```

If only the background color should be changed can be used:

```
.background{ background-color: rgb(182,  
151, 150) }
```

This example shows the color as background, it is applied via the CSS property "background".

To optimize and compress your CSS code, you can use our [online CSS compressor and optimizer](#) based on csstidy. If you want to create a linear or radial gradient as background or border, check our [CSS Gradient Generator](#).

Hey! You found this booklet interesting? Support Converting Colors with the new Membership Option!

The pro membership hides all ads, plus gives you double the colors in the color bucket, and more awesome pro features!

[Learn more, Memberships starting at \\$2.50/m!](#)

**Follow me
on Twitter!**

@ConvertingColor