

Converting Colors

XYZ(35.9059, 35.7379, 37.0808)

Have a look what the booklet for
XYZ(35.9059, 35.7379, 37.0808)
contains.

XYZ(35.8220, 35.6622, 36.8938)	3
<i>Conversions</i>	4
<i>Details</i>	6
<i>Harmonies</i>	12
<i>Previews</i>	24
<i>Color Blindness Simulation</i>	28
<i>CSS Examples</i>	31

Color

**XYZ(35.8220, 35.6622,
36.8938)**

Conversions

Conversions Part 1

Format	Color
Hex	AF9D9D
RGB	175, 157, 157
RGB Percent	69%, 62%, 62%
CMY	0.3137, 0.3843, 0.3843
CMYK	0.00, 0.10, 0.10, 0.31
HSL	0°, 10%, 65%
HSV	0°, 10%, 69%
XYZ	35.8220, 35.6622, 36.8938
YIQ	162.3820, 10.7280, 3.8160

Conversions

Conversions Part 2

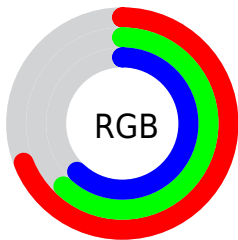
Format	Color
RYB	175, 157, 157
Decimal	11509149
CIELab	66.26, 6.59, 2.40
CIELCh	66, 7.015, 19.986
Yxy	35.6622, 0.3305, 0.3291
Android (android.graphics.Color)	4289699229 (0xFFAF9D9D)
YUV	162.3820, -2.6533, 11.0660
Hunter-Lab	59.7178, 2.5678, 5.1730

Details

The XYZ color **35.8220, 35.6622, 36.8938** is a light color, and the websafe version is hex **999999**. A complement of this color would be **36.9724, 40.9226, 46.5082**, and the grayscale version is **34.5311, 36.3295, 39.5628**.

A 20% lighter version of the original color is **68.3821, 68.8294, 71.9686**, and **15.7816, 15.4863, 15.7930** is the 20% darker color. If you saturate the color by 10%, you get **31.6825, 29.6052, 28.6630**, and if you desaturate by 10%, it is **40.6015, 42.6559, 46.3946**.

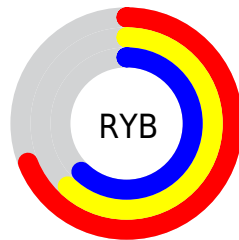
Distribution



Red (69%)

Green (62%)

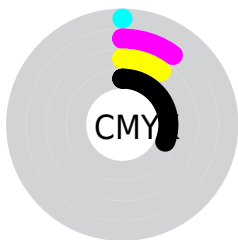
Blue (62%)



Red (69%)

Yellow (62%)

Blue (62%)

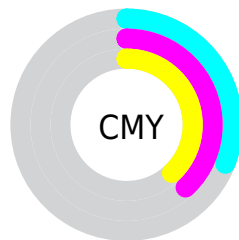


Cyan (0%)

Magenta (10%)

Yellow (10%)

Black (31%)



Cyan (31%)

Magenta (38%)

Yellow (38%)

Brightness & Saturation Gradients

These gradients show how the XYZ color 35.8220, 35.6622, 36.8938 changes by changing the brightness by 10 percent. The first figure shows a shift by +10% for each color and the second figure -10%.

Similar to the brightness gradients but the following saturation gradients show a change of the XYZ color 35.8220, 35.6622, 36.8938 by changing the saturation by 10% instead.

■ 35.8220, 35.6622,
36.8938

■ 35.8220, 35.6622,
36.8938

319.6267,
327.4817, 348.0053

■ 24.4662, 24.1734,
24.8301

■ 68.0829, 68.5104,
71.5939

■ 15.8064, 15.4623,
15.7327

■ 89.7188, 90.6385,
95.0675

■ 9.4773, 9.1445,
9.1829

115.5120,
117.0820, 123.1814

■ 5.1134, 4.8355,
4.7622

145.8280,
148.2250, 156.3542

■ 2.3494, 2.1511,
2.0521

181.0321,
184.4521, 195.0044

■ 0.8197, 0.6931,
0.5871

221.4897,

■ 0.0000, 0.0000,

226.1477, 239.5507

0.0000

267.5661,
273.6961, 290.4115

■ 35.8220, 35.6622,
36.8938

■ 35.8220, 35.6622,
36.8938

■ 31.6825, 29.6052,
28.6630

■ 40.6015, 42.6559,
46.3946

■ 28.1530, 24.4407,
21.6464

■ 46.0434, 50.6186,
57.2136

■ 25.2057, 20.1278,
15.7871

■ 52.1726, 59.5871,
69.3993

■ 22.8092, 16.6210,
11.0230

■ 59.0120, 69.5947,
82.9971

■ 20.9293, 13.8702,
7.2862

■ 66.5834, 80.6732,
98.0501

■ 19.5282, 11.8198,
4.5011

■ 71.4894, 87.8541,
107.7974

■ 18.5625, 10.4067,
2.5818

■ 17.9814, 9.5562,
1.4271

■ 17.6797, 9.1147,
0.8275

Harmonies

Analogous

The Analogous color harmony consists of three colors that are next to each other on the color wheel.



35.9160, 35.6622, 39.8407



35.8220, 35.6622, 36.8938



35.2060, 35.6622, 34.5821

Triad

The Triadic color harmony groups three colors that are evenly spaced from another and form a triangle on the color wheel.



35.8220, 35.6622, 36.8938



32.3782, 35.6622, 35.2418



33.5472, 35.6622, 44.7852

Complementary

The Complementary color scheme is a pair of colors which are on the opposite of each other on the color wheel.



35.8220, 35.6622, 36.8938



36.9724, 40.9226, 46.5082

Split Complementary

Split-complementary colors differ from the complementary color scheme. The scheme consists of three colors, the original color and two neighbors of the complement color.



32.6186, 35.6622, 43.4124



35.8220, 35.6622, 36.8938



31.9529, 35.6622, 37.8367

Square

The Square scheme is like the rectangle color scheme, but the four colors are evenly spaced on the color wheel.



35.8220, 35.6622, 36.8938



33.2128, 35.6622, 33.6629



32.0400, 35.6622, 40.8329



34.5882, 35.6622, 44.5007

Rectangle

The Rectangle color scheme consists of four colors that form a rectangle on the color wheel.



35.8220, 35.6622, 36.8938



34.5891, 35.6622, 33.6638



32.0400, 35.6622, 40.8329



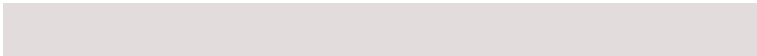
33.2119, 35.6622, 44.4996

Sweetspot

The Sweet Spot groups the original color and five complimentary colors.



35.8230, 35.6638, 36.8946



70.2304, 72.7589, 78.1508



37.4746, 36.3236, 45.5940



15.4539, 15.9438, 17.0605



84.5950, 89.0005, 96.9216



16.2198, 17.0645, 18.5832

Same Dimension

The Same Dimension uses a secret algorithm to generate beautiful new colors.



35.8230, 35.6638, 36.8946



62.6445, 61.6588, 63.0693



37.4017, 38.8213, 37.4208



8.0054, 8.0156, 8.3386



12.6609, 6.5273, 0.5926



0.3522, 0.1816, 0.0165

Inverse Universe

The Inverse Universe completely reimagines the original color for something new.



36.9724, 40.9226, 46.5082



65.0561, 72.6920, 83.2390



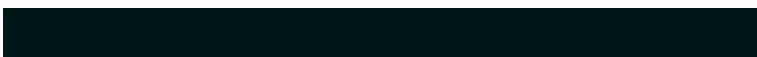
35.2792, 37.5362, 45.9438



8.2363, 9.0719, 10.2696



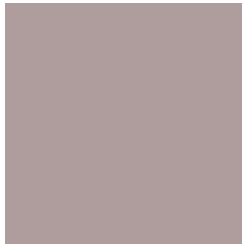
16.5158, 24.1654, 32.8384



0.4595, 0.6723, 0.9135

Previews

White Background



This preview shows how the XYZ color 35.8220, 35.6622, 36.8938 looks on a white background.

Color Contrast Check

Large Text (above 18pt) WCAG AA × Fail

Any Text WCAG AA × Fail

Large Text (above 18pt) WCAG AAA × Fail

Any Text WCAG AAA × Fail

Black Background



This preview shows how the XYZ color 35.8220, 35.6622, 36.8938 looks on a black background.

Color Contrast Check

Large Text (above 18pt) WCAG AA ✓ Pass

Any Text WCAG AA ✓ Pass

Large Text (above 18pt) WCAG AAA ✓ Pass

Any Text WCAG AAA ✓ Pass

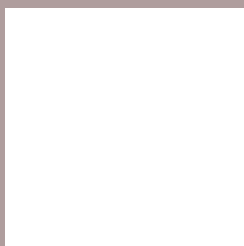
If you want to check with other color combinations, try the [Color Contrast Checker](#).

XYZ 35.8220, 35.6622, 36.8938

Background



This preview shows how black text looks on a background with the XYZ color 35.8220, 35.6622, 36.8938.



This preview shows how white text looks on a background with the XYZ color 35.8220, 35.6622,

Color Blindness Simulation

Color vision deficiency is a very complex topic, and I could not describe the different causes any better than Wikipedia does, so if you want to learn more, you should check out their [article about color blindness](#).

Dichromacy



Original Color

35.8220, 35.6622, 36.8938

Protanopia

34.1387, 35.5373, 37.8610

Deuteranopia

36.3344, 35.6762, 36.8695



Tritanopia

36.6937, 35.4999, 41.9640

Trichromacy



Original Color

35.8220, 35.6622, 36.8938

Protanomaly

34.7181, 35.5897, 37.3874

Deuteranomaly

36.1057, 35.5584, 36.8588

Tritanomaly

36.4938, 35.6874, 40.0869

Monochromacy



Original Color

35.8220, 35.6622, 36.8938

Achromatopsia

34.3422, 36.1307, 39.3463

Achromatomaly

34.8523, 35.8952, 38.3493

CSS Examples

Text

The CSS property to change the color of the text to XYZ 35.8220, 35.6622, 36.8938 is called "color". The color property can be set on classes, ids or directly on the HTML element.

This example shows how text in the color `rgb(175, 157, 157)` looks like.

```
.text, #text, p{  
    color:rgb(175, 157, 157)  
}
```

If you want to add a text shadow in that color use the text-shadow property, you can generate a text shadow directly with our [CSS Text Shadow Generator](#).

Here you see how black text with a 4 pixel rgb(175, 157, 157) colored shadow looks like.

```
.shadow{ text-shadow: 4px 4px 2px rgb(175, 157, 157) }
```

Border

The CSS property to change the border of an element to XYZ 35.8220, 35.6622, 36.8938 is called "border". The border property can be set on classes, ids or directly on the HTML element.

This example shows the color as border, it can be applied via the CSS property "border" or "border-color".

```
.border, #border, table{ border:4px solid rgb(175, 157, 157) }
```


If only the border color should be changed use the property `border-color`.

```
.border{ border-color:rgb(175, 157, 157) }
```

If you want to add a box shadow in that color use:

Here you see how a box with a 4 pixel `rgb(175, 157, 157)` colored shadow looks like.

```
.boxshadow{ -moz-box-shadow:4px 4px 4px  
4px rgb(175, 157, 157); -webkit-box-  
shadow:4px 4px 4px 4px rgb(175, 157, 157);  
box-shadow:4px 4px 4px 4px rgb(175, 157,  
157) }
```

Background

The CSS property to change the background color of an element to XYZ 35.8220, 35.6622, 36.8938 is called "background". The background property can be set on classes, ids or directly on the HTML element.

```
.background, #background, body{  
background: rgb(175, 157, 157) }
```

If only the background color should be changed can be used:

```
.background{ background-color: rgb(175,  
157, 157) }
```

This example shows the color as background, it is applied via the CSS property "background".

To optimize and compress your CSS code, you can use our [online CSS compressor and optimizer](#) based on csstidy. If you want to create a linear or radial gradient as background or border, check our [CSS Gradient Generator](#).

Hey! You found this booklet interesting? Support Converting Colors with the new Membership Option!

The pro membership hides all ads, plus gives you double the colors in the color bucket, and more awesome pro features!

[Learn more, Memberships starting at \\$2.50/m!](#)

**Follow me
on Twitter!**

@ConvertingColor