

Converting Colors

XYZ(36.0337, 33.1155, 30.4000)

Have a look what the booklet for
XYZ(36.0337, 33.1155, 30.4000)
contains.

XYZ(36.0696, 33.0528, 30.4654)	3
<i>Conversions</i>	4
<i>Details</i>	6
<i>Harmonies</i>	12
<i>Previews</i>	24
<i>Color Blindness Simulation</i>	28
<i>CSS Examples</i>	31

Color

**XYZ(36.0696, 33.0528,
30.4654)**

Conversions

Conversions Part 1

Format	Color
Hex	BD918F
RGB	189, 145, 143
RGB Percent	74%, 57%, 56%
CMY	0.2588, 0.4314, 0.4392
CMYK	0.00, 0.23, 0.24, 0.26
HSL	3°, 26%, 65%
HSV	3°, 24%, 74%
XYZ	36.0696, 33.0528, 30.4654
YIQ	157.9280, 26.8660, 8.7060

Conversions

Conversions Part 2

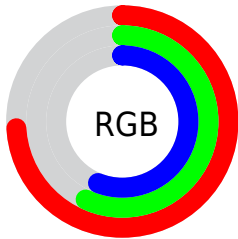
Format	Color
R_{YB}	189, 145, 143
Decimal	12423567
CIE _{Lab}	64.20, 16.29, 7.47
CIE _{LCh}	64, 17.922, 24.635
Yxy	33.0528, 0.3622, 0.3319
Android (android.graphics.Color)	4290613647 (0xFFBD918F)
YUV	157.9280, -7.3595, 27.2501
Hunter-Lab	57.4916, 11.3788, 8.8257

Details

The XYZ color **36.0696, 33.0528, 30.4654** is a light color, and the websafe version is hex **CC9999**. A complement of this color would be **38.2829, 45.0531, 54.8227**, and the grayscale version is **32.4913, 34.1834, 37.2257**.

A 20% lighter version of the original color is **68.5075, 64.4709, 61.6567**, and **15.9702, 13.9466, 12.2062** is the 20% darker color. If you saturate the color by 10%, you get **32.2109, 27.4368, 22.7005**, and if you desaturate by 10%, it is **40.6108, 39.6474, 39.6487**.

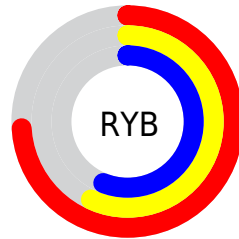
Distribution



Red (74%)

Green (57%)

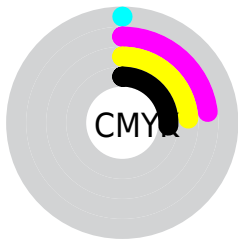
Blue (56%)



Red (74%)

Yellow (57%)

Blue (56%)

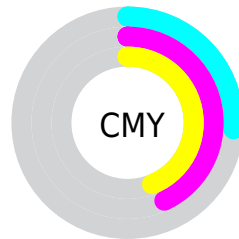


Cyan (0%)

Magenta (23%)

Yellow (24%)

Black (26%)



Cyan (26%)


Magenta (43%)


Yellow (44%)

Brightness & Saturation Gradients


These gradients show how the XYZ color 36.0696, 33.0528, 30.4654 changes by changing the brightness by 10 percent. The first figure shows a shift by +10% for each color and the second figure -10%.


Similar to the brightness gradients but the following saturation gradients show a change of the XYZ color 36.0696, 33.0528, 30.4654 by changing the saturation by 10% instead.


 36.0696, 33.0528,
30.4654


 36.0696, 33.0528,
30.4654


320.6906,
315.8876, 318.3424

 24.6583, 22.1669,
19.9371


 68.4626, 64.4580,
61.4671

 15.9500, 13.9796,
12.1657


 90.1751, 85.7460,
82.7775

 9.5794, 8.1065,
6.7327


116.0520,
111.2702, 108.5191

 5.1811, 4.1632,
3.2196

146.4587,
141.4150, 139.1103

 2.3898, 1.7652,
1.2078

181.7606,
176.5647, 174.9696

 0.8400, 0.4654,
0.0000

222.3229,

 0.0000, 0.0000,

217.1038, 216.5158

0.0000

268.5112,
263.4166, 264.1672

■ 36.0696, 33.0528,
30.4654

■ 36.0696, 33.0528,
30.4654

■ 32.2109, 27.4368,
22.7005

■ 40.6108, 39.6474,
39.6487

■ 28.9993, 22.7485,
16.2813

■ 45.8626, 47.2591,
50.3139

■ 26.4001, 18.9393,
11.1320

■ 51.8544, 55.9302,
62.5233

■ 24.3743, 15.9544,
7.1683

■ 58.6134, 65.6991,
76.3349

■ 22.8785, 13.7329,
4.2957

■ 66.1656, 76.6022,
91.8038

■ 21.8631, 12.2055,
2.4053

■ 74.3088, 88.5838,
107.7896

■ 21.2690, 11.2902,
1.3658

■ 74.7963, 89.5589,
107.9521

■ 21.0757, 10.9976,
1.0119

Harmonies

Analogous

The Analogous color harmony consists of three colors that are next to each other on the color wheel.



36.5358, 33.0528, 37.3131



36.0696, 33.0528, 30.4654



34.3294, 33.0528, 25.7412

Triad

The Triadic color harmony groups three colors that are evenly spaced from another and form a triangle on the color wheel.



36.0696, 33.0528, 30.4654



27.5973, 33.0528, 28.4822



30.9611, 33.0528, 51.7960

Complementary

The Complementary color scheme is a pair of colors which are on the opposite of each other on the color wheel.



36.0696, 33.0528, 30.4654



38.2829, 45.0531, 54.8227

Split Complementary

Split-complementary colors differ from the complementary color scheme. The scheme consists of three colors, the original color and two neighbors of the complement color.



28.6717, 33.0528, 48.6487



36.0696, 33.0528, 30.4654



26.7978, 33.0528, 34.6963

Square

The Square scheme is like the rectangle color scheme, but the four colors are evenly spaced on the color wheel.



36.0696, 33.0528, 30.4654



29.4227, 33.0528, 24.7089



27.1804, 33.0528, 42.1426



33.4967, 33.0528, 50.2659

Rectangle

The Rectangle color scheme consists of four colors that form a rectangle on the color wheel.



36.0696, 33.0528, 30.4654



32.7282, 33.0528, 24.1118



27.1804, 33.0528, 42.1426



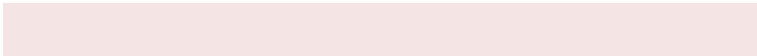
30.1388, 33.0528, 51.2386

Sweetspot

The Sweet Spot groups the original color and five complimentary colors.



36.0705, 33.0543, 30.4661



79.3999, 80.6722, 84.5409



39.8287, 34.0720, 51.7536



16.9504, 17.1682, 17.9277



90.7827, 95.5105, 104.0109



18.6292, 19.5994, 21.3438

Same Dimension

The Same Dimension uses a secret algorithm to generate beautiful new colors.



36.0705, 33.0543, 30.4661



60.9102, 53.8299, 47.1262



39.8611, 40.6356, 31.7296



9.5626, 9.6012, 9.9258



14.1950, 7.4287, 0.6857



0.5676, 0.3141, 0.0307

Inverse Universe

The Inverse Universe completely reimagines the original color for something new.



38.2829, 45.0531, 54.8227



65.5289, 78.8874, 97.9993



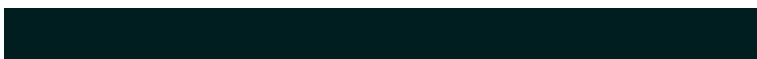
33.8725, 36.2324, 53.3526



9.7720, 10.7363, 12.2295



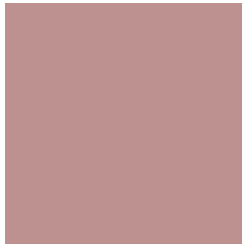
17.2812, 24.6741, 36.2447



0.6880, 0.9887, 1.4234

Previews

White Background



This preview shows how the XYZ color 36.0696, 33.0528, 30.4654 looks on a white background.

Color Contrast Check

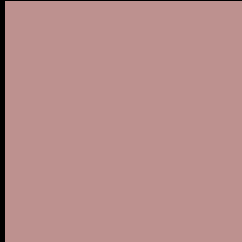
Large Text (above 18pt) WCAG AA × Fail

Any Text WCAG AA × Fail

Large Text (above 18pt) WCAG AAA × Fail

Any Text WCAG AAA × Fail

Black Background



This preview shows how the XYZ color 36.0696, 33.0528, 30.4654 looks on a black background.

Color Contrast Check

Large Text (above 18pt) WCAG AA ✓ Pass

Any Text WCAG AA ✓ Pass

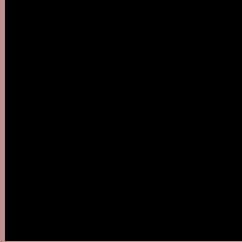
Large Text (above 18pt) WCAG AAA ✓ Pass

Any Text WCAG AAA ✓ Pass

If you want to check with other color combinations, try the [Color Contrast Checker](#).

XYZ 36.0696, 33.0528, 30.4654

Background



This preview shows how black text looks on a background with the XYZ color 36.0696, 33.0528, 30.4654.



This preview shows how white text looks on a background with the XYZ color 36.0696, 33.0528,

30.4654.

Color Blindness Simulation

Color vision deficiency is a very complex topic, and I could not describe the different causes any better than Wikipedia does, so if you want to learn more, you should check out their [article about color blindness](#).

Dichromacy



Original Color

36.0696, 33.0528, 30.4654

Protanopia

31.6434, 33.0862, 33.1523

Deuteranopia

33.6933, 32.9958, 30.1842



Tritanopia

36.8904, 32.9252, 34.9827

Trichromacy



Original Color

36.0696, 33.0528, 30.4654

Protanomaly

33.1277, 32.8977, 32.2076

Deuteranomaly

34.5284, 32.9566, 30.1326

Tritanomaly

36.7135, 33.0957, 33.3073

Monochromacy



Original Color

36.0696, 33.0528, 30.4654

Achromatopsia

32.4990, 34.1914, 37.2345

Achromatomaly

33.5032, 33.5174, 34.8407

CSS Examples

Text

The CSS property to change the color of the text to XYZ 36.0696, 33.0528, 30.4654 is called "color". The color property can be set on classes, ids or directly on the HTML element.

This example shows how text in the color `rgb(189, 145, 143)` looks like.

```
.text, #text, p{  
    color:rgb(189, 145, 143)  
}
```

If you want to add a text shadow in that color use the text-shadow property, you can generate a text shadow directly with our [CSS Text Shadow Generator](#).

Here you see how black text with a 4 pixel rgb(189, 145, 143) colored shadow looks like.

```
.shadow{ text-shadow: 4px 4px 2px rgb(189, 145, 143) }
```

Border

The CSS property to change the border of an element to XYZ 36.0696, 33.0528, 30.4654 is called "border". The border property can be set on classes, ids or directly on the HTML element.

This example shows the color as border, it can be applied via the CSS property "border" or "border-color".

```
.border, #border, table{ border:4px solid rgb(189, 145, 143) }
```


If only the border color should be changed use the property `border-color`.

```
.border{ border-color:rgb(189, 145, 143) }
```

If you want to add a box shadow in that color use:

Here you see how a box with a 4 pixel `rgb(189, 145, 143)` colored shadow looks like.

```
.boxshadow{ -moz-box-shadow:4px 4px 4px  
4px rgb(189, 145, 143); -webkit-box-  
shadow:4px 4px 4px 4px rgb(189, 145, 143);  
box-shadow:4px 4px 4px 4px rgb(189, 145,  
143) }
```

Background

The CSS property to change the background color of an element to XYZ 36.0696, 33.0528, 30.4654 is called "background". The background property can be set on classes, ids or directly on the HTML element.

```
.background, #background, body{  
background: rgb(189, 145, 143) }
```

If only the background color should be changed can be used:

```
.background{ background-color: rgb(189,  
145, 143) }
```

This example shows the color as background, it is applied via the CSS property "background".

To optimize and compress your CSS code, you can use our [online CSS compressor and optimizer](#) based on csstidy. If you want to create a linear or radial gradient as background or border, check our [CSS Gradient Generator](#).

Hey! You found this booklet interesting? Support Converting Colors with the new Membership Option!

The pro membership hides all ads, plus gives you double the colors in the color bucket, and more awesome pro features!

[Learn more, Memberships starting at \\$2.50/m!](#)

**Follow me
on Twitter!**

@ConvertingColor