

Converting Colors

XYZ(36.1008, 34.5948, 34.1408)

Have a look what the booklet for
XYZ(36.1008, 34.5948, 34.1408)
contains.

XYZ(36.1056, 34.6359, 34.0606)	3
<i>Conversions</i>	4
<i>Details</i>	6
<i>Harmonies</i>	12
<i>Previews</i>	24
<i>Color Blindness Simulation</i>	28
<i>CSS Examples</i>	31

Color

**XYZ(36.1056, 34.6359,
34.0606)**

Conversions

Conversions Part 1

Format	Color
Hex	B69897
RGB	182, 152, 151
RGB Percent	71%, 60%, 59%
CMY	0.2863, 0.4039, 0.4078
CMYK	0.00, 0.16, 0.17, 0.29
HSL	2°, 18%, 65%
HSV	2°, 17%, 71%
XYZ	36.1056, 34.6359, 34.0606
YIQ	160.8560, 18.2010, 6.0490

Conversions

Conversions Part 2

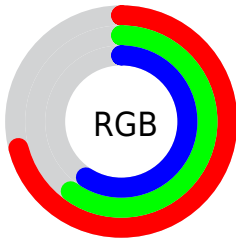
Format	Color
RYB	182, 152, 151
Decimal	11966615
CIELab	65.46, 10.98, 4.69
CIELCh	65, 11.937, 23.127
Yxy	34.6359, 0.3445, 0.3305
Android (android.graphics.Color)	4290156695 (0xFFB69897)
YUV	160.8560, -4.8590, 18.5433
Hunter-Lab	58.8523, 6.5175, 6.8827

Details

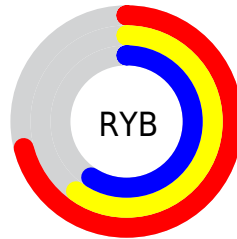
The XYZ color **36.1056, 34.6359, 34.0606** is a light color, and the websafe version is hex **CC9999**. A complement of this color would be **37.7297, 43.0037, 50.5684**, and the grayscale version is **33.8261, 35.5877, 38.7550**.

A 20% lighter version of the original color is **68.3506, 66.7275, 67.0348**, and **16.0072, 14.8946, 14.0879** is the 20% darker color. If you saturate the color by 10%, you get **32.0911, 28.7922, 25.9844**, and if you desaturate by 10%, it is **40.7747, 41.4228, 43.4816**.

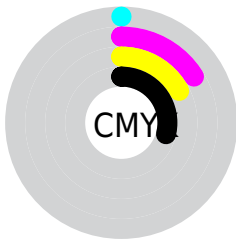
Distribution



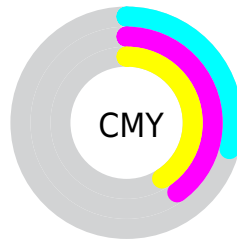
- Red (71%)
- Green (60%)
- Blue (59%)



- Red (71%)
- Yellow (60%)
- Blue (59%)



- Cyan (0%)
- Magenta (16%)
- Yellow (17%)
- Black (29%)



- Cyan (29%)
- Magenta (40%)
- Yellow (41%)

Brightness & Saturation Gradients

These gradients show how the XYZ color 36.1056, 34.6359, 34.0606 changes by changing the brightness by 10 percent. The first figure shows a shift by +10% for each color and the second figure -10%.

Similar to the brightness gradients but the following saturation gradients show a change of the XYZ color 36.1056, 34.6359, 34.0606 by changing the saturation by 10% instead.

■ 36.1056, 34.6359,
34.0606

■ 36.1056, 34.6359,
34.0606

320.8451,
322.9583, 335.1796

■ 24.6863, 23.3825,
22.6624

■ 68.5178, 66.9213,
67.1629

■ 15.9709, 14.8762,
14.1415

■ 90.2414, 88.7222,
89.7040

■ 9.5943, 8.7326,
8.0793

116.1305,
114.8077, 116.7966

■ 5.1910, 4.5672,
4.0572

146.5503,
145.5622, 148.8591

■ 2.3957, 1.9956,
1.6568

181.8664,
181.3701, 186.3102

■ 0.8429, 0.6049,
0.3309

222.4439,

■ 0.0000, 0.0000,

222.6158, 229.5682

0.0000

268.6484,
269.6838, 279.0518

■ 36.1056, 34.6359,
34.0606

■ 36.1056, 34.6359,
34.0606

■ 32.0911, 28.7922,
25.9844

■ 40.7747, 41.4228,
43.4816

■ 28.6991, 23.8457,
19.1896

■ 46.1227, 49.1871,
54.3024

■ 25.8995, 19.7532,
13.6110

■ 52.1763, 57.9671,
66.5778

■ 23.6582, 16.4665,
9.1770

■ 58.9599, 67.7976,
80.3587

■ 21.9377, 13.9324,
5.8080

■ 66.4966, 78.7116,
95.6938

■ 20.6962, 12.0914,
3.4149

■ 73.1016, 88.6852,
107.8728

■ 19.8850, 10.8749,
1.8935

■ 19.4422, 10.1990,
1.0990

■ 19.3555, 10.0730,
0.9241

Harmonies

Analogous

The Analogous color harmony consists of three colors that are next to each other on the color wheel.



36.3675, 34.6359, 38.8751



36.1056, 34.6359, 34.0606



34.9764, 34.6359, 30.5316

Triad

The Triadic color harmony groups three colors that are evenly spaced from another and form a triangle on the color wheel.



36.1056, 34.6359, 34.0606



30.3069, 34.6359, 32.2320



32.5202, 34.6359, 48.0873

Complementary

The Complementary color scheme is a pair of colors which are on the opposite of each other on the color wheel.



36.1056, 34.6359, 34.0606



37.7297, 43.0037, 50.5684

Split Complementary

Split-complementary colors differ from the complementary color scheme. The scheme consists of three colors, the original color and two neighbors of the complement color.



30.9465, 34.6359, 45.9396



36.1056, 34.6359, 34.0606



29.6983, 34.6359, 36.5735

Square

The Square scheme is like the rectangle color scheme, but the four colors are evenly spaced on the color wheel.



36.1056, 34.6359, 34.0606



31.6192, 34.6359, 29.5429



29.9282, 34.6359, 41.6168



34.2568, 34.6359, 47.2647

Rectangle

The Rectangle color scheme consists of four colors that form a rectangle on the color wheel.



36.1056, 34.6359, 34.0606



33.9046, 34.6359, 29.2391



29.9282, 34.6359, 41.6168



31.9554, 34.6359, 47.6829

Sweetspot

The Sweet Spot groups the original color and five complimentary colors.



36.1066, 34.6375, 34.0613



75.7141, 77.6994, 82.4505



38.7487, 35.4349, 48.7744



16.5795, 16.9530, 17.9208



88.6918, 93.3107, 101.6153



17.8044, 18.7317, 20.3988

Same Dimension

The Same Dimension uses a secret algorithm to generate beautiful new colors.



36.1066, 34.6375, 34.0613



62.9253, 59.1087, 56.6475



38.6996, 39.8235, 34.9257



9.0273, 9.0575, 9.3794



13.6780, 7.1324, 0.6558



0.4901, 0.2673, 0.0258

Inverse Universe

The Inverse Universe completely reimagines the original color for something new.



37.7297, 43.0037, 50.5684



66.3581, 76.8039, 91.5629



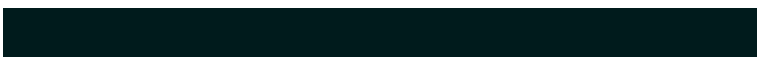
34.8397, 37.2236, 49.6051



9.2411, 10.1594, 11.5533



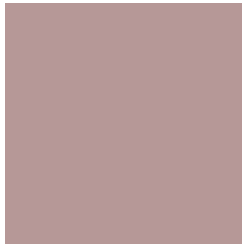
16.9517, 24.3630, 35.0622



0.6054, 0.8745, 1.2386

Previews

White Background



This preview shows how the XYZ color 36.1056, 34.6359, 34.0606 looks on a white background.

Color Contrast Check

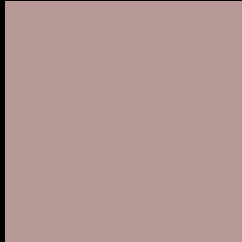
Large Text (above 18pt) WCAG AA × Fail

Any Text WCAG AA × Fail

Large Text (above 18pt) WCAG AAA × Fail

Any Text WCAG AAA × Fail

Black Background



This preview shows how the XYZ color 36.1056, 34.6359, 34.0606 looks on a black background.

Color Contrast Check

Large Text (above 18pt) WCAG AA ✓ Pass

Any Text WCAG AA ✓ Pass

Large Text (above 18pt) WCAG AAA ✓ Pass

Any Text WCAG AAA ✓ Pass

If you want to check with other color combinations, try the [Color Contrast Checker](#).

XYZ 36.1056, 34.6359, 34.0606

Background



This preview shows how black text looks on a background with the XYZ color 36.1056, 34.6359, 34.0606.



This preview shows how white text looks on a background with the XYZ color 36.1056, 34.6359,

Color Blindness Simulation

Color vision deficiency is a very complex topic, and I could not describe the different causes any better than Wikipedia does, so if you want to learn more, you should check out their [article about color blindness](#).

Dichromacy



Original Color

36.1056, 34.6359, 34.0606

Protanopia

33.2475, 34.6068, 35.9378

Deuteranopia

35.5016, 34.8105, 34.1261



Tritanopia

36.9564, 34.4886, 38.8916

Trichromacy



Original Color

36.1056, 34.6359, 34.0606

Protanomaly

34.2988, 34.6561, 35.4534

Deuteranomaly

35.5676, 34.6005, 34.0821

Tritanomaly

36.7666, 34.6691, 37.1018

Monochromacy



Original Color

36.1056, 34.6359, 34.0606

Achromatopsia

33.8758, 35.6400, 38.8120

Achromatomaly

34.6748, 35.3231, 36.8888

CSS Examples

Text

The CSS property to change the color of the text to XYZ 36.1056, 34.6359, 34.0606 is called "color". The color property can be set on classes, ids or directly on the HTML element.

This example shows how text in the color `rgb(182, 152, 151)` looks like.

```
.text, #text, p{  
    color:rgb(182, 152, 151)  
}
```

If you want to add a text shadow in that color use the text-shadow property, you can generate a text shadow directly with our [CSS Text Shadow Generator](#).

Here you see how black text with a 4 pixel rgb(182, 152, 151) colored shadow looks like.

```
.shadow{ text-shadow: 4px 4px 2px rgb(182, 152, 151) }
```

Border

The CSS property to change the border of an element to XYZ 36.1056, 34.6359, 34.0606 is called "border". The border property can be set on classes, ids or directly on the HTML element.

This example shows the color as border, it can be applied via the CSS property "border" or "border-color".

```
.border, #border, table{ border:4px solid rgb(182, 152, 151) }
```


If only the border color should be changed use the property `border-color`.

```
.border{ border-color:rgb(182, 152, 151) }
```

If you want to add a box shadow in that color use:

Here you see how a box with a 4 pixel `rgb(182, 152, 151)` colored shadow looks like.

```
.boxshadow{ -moz-box-shadow:4px 4px 4px 4px rgb(182, 152, 151); -webkit-box-shadow:4px 4px 4px 4px rgb(182, 152, 151); box-shadow:4px 4px 4px 4px rgb(182, 152, 151) }
```

Background

The CSS property to change the background color of an element to XYZ 36.1056, 34.6359, 34.0606 is called "background". The background property can be set on classes, ids or directly on the HTML element.

```
.background, #background, body{  
background: rgb(182, 152, 151) }
```

If only the background color should be changed can be used:

```
.background{ background-color: rgb(182,  
152, 151) }
```

This example shows the color as background, it is applied via the CSS property "background".

To optimize and compress your CSS code, you can use our [online CSS compressor and optimizer](#) based on csstidy. If you want to create a linear or radial gradient as background or border, check our [CSS Gradient Generator](#).

Hey! You found this booklet interesting? Support Converting Colors with the new Membership Option!

The pro membership hides all ads, plus gives you double the colors in the color bucket, and more awesome pro features!

[Learn more, Memberships starting at \\$2.50/m!](#)

**Follow me
on Twitter!**

@ConvertingColor