

Converting Colors

XYZ(36.2668, 32.9460, 29.6470)

Have a look what the booklet for
XYZ(36.2668, 32.9460, 29.6470)
contains.

XYZ(36.2668, 32.9460, 29.6470)	3
<i>Conversions</i>	4
<i>Details</i>	6
<i>Harmonies</i>	12
<i>Previews</i>	24
<i>Color Blindness Simulation</i>	28
<i>CSS Examples</i>	31

Color

**XYZ(36.2668, 32.9460,
29.6470)**

Conversions

Conversions Part 1

Format	Color
Hex	BF908D
RGB	191, 144, 141
RGB Percent	75%, 56%, 55%
CMY	0.2510, 0.4353, 0.4471
CMYK	0.00, 0.25, 0.26, 0.25
HSL	4°, 28%, 65%
HSV	4°, 26%, 75%
XYZ	36.2668, 32.9460, 29.6470
YIQ	157.7110, 28.9750, 9.0310

Conversions

Conversions Part 2

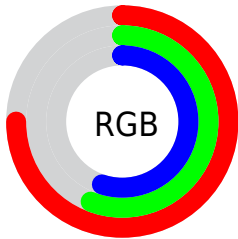
Format	Color
RYB	191, 144, 141
Decimal	12554381
CIELab	64.12, 17.32, 8.50
CIELCh	64, 19.297, 26.147
Yxy	32.9460, 0.3669, 0.3333
Android (android.graphics.Color)	4290744461 (0xFFBF908D)
YUV	157.7110, -8.2385, 29.1945
Hunter-Lab	57.3986, 12.3361, 9.5551

Details

The XYZ color **36.2668, 32.9460, 29.6470** is a light color, and the websafe version is hex **CC9999**. A complement of this color would be **38.3710, 45.3891, 56.0289**, and the grayscale version is **32.3962, 34.0833, 37.1167**.

A 20% lighter version of the original color is **68.7558, 64.2848, 60.4141**, and **15.9560, 13.8183, 11.7237** is the 20% darker color. If you saturate the color by 10%, you get **32.4602, 27.4142, 21.9608**, and if you desaturate by 10%, it is **40.7527, 39.4437, 38.7695**.

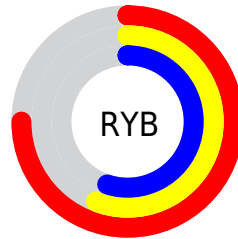
Distribution



Red (75%)

Green (56%)

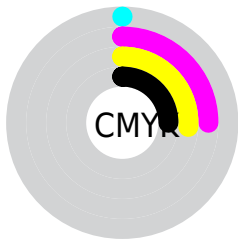
Blue (55%)



Red (75%)

Yellow (56%)

Blue (55%)

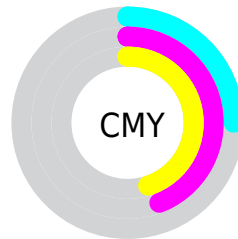


Cyan (0%)

Magenta (25%)

Yellow (26%)

Black (25%)



Cyan (25%)


Magenta (44%)


Yellow (45%)

Brightness & Saturation Gradients


These gradients show how the XYZ color 36.2668, 32.9460, 29.6470 changes by changing the brightness by 10 percent. The first figure shows a shift by +10% for each color and the second figure -10%.


Similar to the brightness gradients but the following saturation gradients show a change of the XYZ color 36.2668, 32.9460, 29.6470 by changing the saturation by 10% instead.


 36.2668, 32.9460,
29.6470


 36.2668, 32.9460,
29.6470

321.5361,
315.4063, 314.4115


 24.8114, 22.0851,
19.3210


 68.7648, 64.2912,
60.1579

 16.0646, 13.9194,
11.7233

 90.5382, 85.5443,
81.1799

 9.6610, 8.0646,
6.4353


 116.4816,
111.0302, 106.6043

 5.2353, 4.1363,
3.0385

146.9603,
141.1334, 136.8496

 2.4221, 1.7501,
1.1143

182.3398,
176.2382, 172.3345

 0.8562, 0.4558,
0.0000

222.9853,

 0.0000, 0.0000,

216.7290, 213.4774

0.0000

269.2623,
262.9903, 260.6969

■ 36.2668, 32.9460,
29.6470

■ 36.2668, 32.9460,
29.6470

■ 32.4602, 27.4142,
21.9608

■ 40.7527, 39.4437,
38.7695

■ 29.2972, 22.7979,
15.6359

■ 45.9460, 46.9453,
49.3942

■ 26.7431, 19.0491,
10.5935

■ 51.8763, 55.4928,
61.5853

■ 24.7585, 16.1134,
6.7459

■ 58.5709, 65.1239,
75.4026

■ 23.2997, 13.9307,
3.9944

■ 66.0557, 75.8748,
90.9029

■ 22.3165, 12.4322,
2.2244

■ 74.2583, 87.7412,
107.6297

■ 21.7477, 11.5360,
1.2901

■ 75.2959, 89.8164,
107.9755

■ 21.6111, 11.3268,
1.0473

Harmonies

Analogous

The Analogous color harmony consists of three colors that are next to each other on the color wheel.



36.8492, 32.9460, 36.8924



36.2668, 32.9460, 29.6470



34.3305, 32.9460, 24.7798

Triad

The Triadic color harmony groups three colors that are evenly spaced from another and form a triangle on the color wheel.



36.2668, 32.9460, 29.6470



27.1539, 32.9460, 28.1324



30.9627, 32.9460, 53.0606

Complementary

The Complementary color scheme is a pair of colors which are on the opposite of each other on the color wheel.



36.2668, 32.9460, 29.6470



38.3710, 45.3891, 56.0289

Split Complementary

Split-complementary colors differ from the complementary color scheme. The scheme consists of three colors, the original color and two neighbors of the complement color.



28.4800, 32.9460, 49.8624



36.2668, 32.9460, 29.6470



26.3632, 32.9460, 34.8717

Square

The Square scheme is like the rectangle color scheme, but the four colors are evenly spaced on the color wheel.



36.2668, 32.9460, 29.6470



29.0574, 32.9460, 23.9986



26.8343, 32.9460, 42.9139



33.6849, 32.9460, 51.1314

Rectangle

The Rectangle color scheme consists of four colors that form a rectangle on the color wheel.



36.2668, 32.9460, 29.6470



32.5880, 32.9460, 23.1661



26.8343, 32.9460, 42.9139



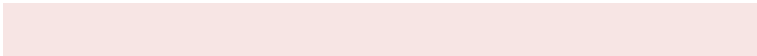
30.0740, 32.9460, 52.5387

Sweetspot

The Sweet Spot groups the original color and five complimentary colors.



36.2677, 32.9475, 29.6477



80.3746, 81.3159, 84.5397



40.1420, 33.7789, 52.2644



17.3283, 17.3924, 17.9062



92.9021, 97.7402, 106.4391



19.4759, 20.4902, 22.3138

Same Dimension

The Same Dimension uses a secret algorithm to generate beautiful new colors.



36.2677, 32.9475, 29.6477



61.1850, 53.5341, 45.4724



40.3889, 41.1899, 31.0214



9.5750, 9.6259, 9.9300



14.2233, 7.4855, 0.6952



0.5731, 0.3250, 0.0325

Inverse Universe

The Inverse Universe completely reimagines the original color for something new.



38.3710, 45.3891, 56.0289



65.5394, 79.3056, 100.1323



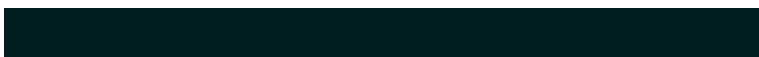
33.5749, 35.7969, 54.4302



9.7582, 10.7087, 12.2249



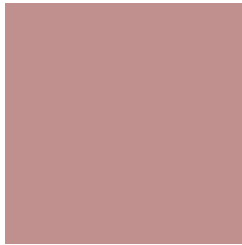
16.8646, 23.8409, 36.1058



0.6756, 0.9639, 1.4193

Previews

White Background



This preview shows how the XYZ color 36.2668, 32.9460, 29.6470 looks on a white background.

Color Contrast Check

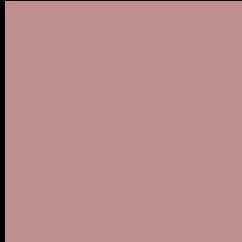
Large Text (above 18pt) WCAG AA × Fail

Any Text WCAG AA × Fail

Large Text (above 18pt) WCAG AAA × Fail

Any Text WCAG AAA × Fail

Black Background



This preview shows how the XYZ color 36.2668, 32.9460, 29.6470 looks on a black background.

Color Contrast Check

Large Text (above 18pt) WCAG AA ✓ Pass

Any Text WCAG AA ✓ Pass

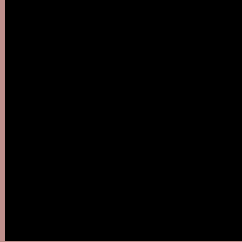
Large Text (above 18pt) WCAG AAA ✓ Pass

Any Text WCAG AAA ✓ Pass

If you want to check with other color combinations, try the [Color Contrast Checker](#).

XYZ 36.2668, 32.9460, 29.6470

Background



This preview shows how black text looks on a background with the XYZ color 36.2668, 32.9460, 29.6470.



This preview shows how white text looks on a background with the XYZ color 36.2668, 32.9460,

29.6470.

Color Blindness Simulation

Color vision deficiency is a very complex topic, and I could not describe the different causes any better than Wikipedia does, so if you want to learn more, you should check out their [article about color blindness](#).

Dichromacy



Original Color

36.2668, 32.9460, 29.6470

Protanopia

31.6857, 33.1263, 32.3278

Deuteranopia

33.5445, 32.9362, 29.4003



Tritanopia

37.1610, 32.8524, 34.5195

Trichromacy



Original Color

36.2668, 32.9460, 29.6470

Protanomaly

33.1907, 32.9482, 31.3984

Deuteranomaly

34.3796, 32.8970, 29.3487

Tritanomaly

36.9855, 33.0213, 32.8582

Monochromacy



Original Color

36.2668, 32.9460, 29.6470

Achromatopsia

32.4990, 34.1914, 37.2345

Achromatomaly

33.6363, 33.5955, 34.4175

CSS Examples

Text

The CSS property to change the color of the text to XYZ 36.2668, 32.9460, 29.6470 is called "color". The color property can be set on classes, ids or directly on the HTML element.

This example shows how text in the color `rgb(191, 144, 141)` looks like.

```
.text, #text, p{  
    color:rgb(191, 144, 141)  
}
```

If you want to add a text shadow in that color use the text-shadow property, you can generate a text shadow directly with our [CSS Text Shadow Generator](#).

Here you see how black text with a 4 pixel rgb(191, 144, 141) colored shadow looks like.

```
.shadow{ text-shadow: 4px 4px 2px rgb(191, 144, 141) }
```

Border

The CSS property to change the border of an element to XYZ 36.2668, 32.9460, 29.6470 is called "border". The border property can be set on classes, ids or directly on the HTML element.

This example shows the color as border, it can be applied via the CSS property "border" or "border-color".

```
.border, #border, table{ border:4px solid rgb(191, 144, 141) }
```


If only the border color should be changed use the property `border-color`.

```
.border{ border-color:rgb(191, 144, 141) }
```

If you want to add a box shadow in that color use:

Here you see how a box with a 4 pixel `rgb(191, 144, 141)` colored shadow looks like.

```
.boxshadow{ -moz-box-shadow:4px 4px 4px  
4px rgb(191, 144, 141); -webkit-box-  
shadow:4px 4px 4px 4px rgb(191, 144, 141);  
box-shadow:4px 4px 4px 4px rgb(191, 144,  
141) }
```

Background

The CSS property to change the background color of an element to XYZ 36.2668, 32.9460, 29.6470 is called "background". The background property can be set on classes, ids or directly on the HTML element.

```
.background, #background, body{  
background: rgb(191, 144, 141) }
```

If only the background color should be changed can be used:

```
.background{ background-color: rgb(191,  
144, 141) }
```

This example shows the color as background, it is applied via the CSS property "background".

To optimize and compress your CSS code, you can use our [online CSS compressor and optimizer](#) based on csstidy. If you want to create a linear or radial gradient as background or border, check our [CSS Gradient Generator](#).

Hey! You found this booklet interesting? Support Converting Colors with the new Membership Option!

The pro membership hides all ads, plus gives you double the colors in the color bucket, and more awesome pro features!

[Learn more, Memberships starting at \\$2.50/m!](#)

**Follow me
on Twitter!**

@ConvertingColor