

Converting Colors

XYZ(36.4402, 32.9757, 32.3830)

Have a look what the booklet for
XYZ(36.4402, 32.9757, 32.3830)
contains.

XYZ(36.5538, 33.0318, 32.4662)	3
<i>Conversions</i>	4
<i>Details</i>	6
<i>Harmonies</i>	12
<i>Previews</i>	24
<i>Color Blindness Simulation</i>	28
<i>CSS Examples</i>	31

Color

**XYZ(36.5538, 33.0318,
32.4662)**

Conversions

Conversions Part 1

Format	Color
Hex	BE9094
RGB	190, 144, 148
RGB Percent	75%, 56%, 58%
CMY	0.2549, 0.4353, 0.4196
CMYK	0.00, 0.24, 0.22, 0.25
HSL	355°, 26%, 65%
HSV	355°, 24%, 75%
XYZ	36.5538, 33.0318, 32.4662
YIQ	158.2100, 26.1320, 10.9960

Conversions

Conversions Part 2

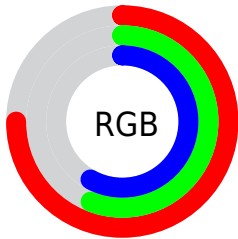
Format	Color
R_{YB}	190, 144, 148
Decimal	12488852
CIE _{Lab}	64.19, 17.98, 4.64
CIE _{LCh}	64, 18.566, 14.468
Yxy	33.0318, 0.3582, 0.3237
Android (android.graphics.Color)	4290678932 (0xFFBE9094)
YUV	158.2100, -5.0335, 27.8798
Hunter-Lab	57.4733, 12.9502, 6.7389

Details

The XYZ color **36.5538, 33.0318, 32.4662** is a light color, and the websafe version is hex **CC9999**. A complement of this color would be **38.7794, 46.3022, 53.3500**, and the grayscale version is **32.6093, 34.3075, 37.3609**.

A 20% lighter version of the original color is **69.2125, 64.4266, 64.6648**, and **16.2254, 13.9260, 13.1421** is the 20% darker color. If you saturate the color by 10%, you get **32.6427, 27.2449, 24.8876**, and if you desaturate by 10%, it is **41.1569, 39.8727, 41.2917**.

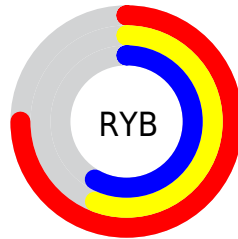
Distribution



Red (75%)

Green (56%)

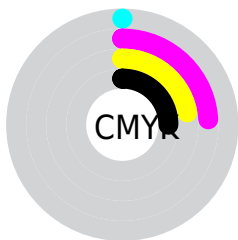
Blue (58%)



Red (75%)

Yellow (56%)

Blue (58%)

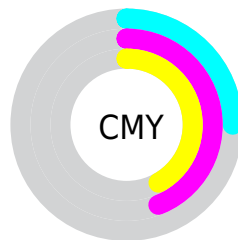


Cyan (0%)

Magenta (24%)

Yellow (22%)

Black (25%)



Cyan (25%)


Magenta (44%)


Yellow (42%)

Brightness & Saturation Gradients


These gradients show how the XYZ color 36.5538, 33.0318, 32.4662 changes by changing the brightness by 10 percent. The first figure shows a shift by +10% for each color and the second figure -10%.


Similar to the brightness gradients but the following saturation gradients show a change of the XYZ color 36.5538, 33.0318, 32.4662 by changing the saturation by 10% instead.


 36.5538, 33.0318,
32.4662


 36.5538, 33.0318,
32.4662


322.7638,
315.7930, 327.7954

 25.0343, 22.1508,
21.4501

 69.2043, 64.4252,
64.6476

 16.2315, 13.9678,
13.2589


 91.0660, 85.7063,
86.6500

 9.7800, 8.0982,
7.4743


117.1058,
111.2230, 113.1515

 5.3145, 4.1579,
3.6775

147.6890,
141.3596, 144.5707

 2.4696, 1.7623,
1.4502

183.1811,
176.5005, 181.3262

 0.8799, 0.4635,
0.1804

223.9474,

 0.0000, 0.0000,

217.0301, 223.8364

0.0000

270.3532,
263.3328, 272.5200

■ 36.5538, 33.0318,
32.4662

■ 36.5538, 33.0318,
32.4662

■ 32.6427, 27.2449,
24.8876

■ 41.1569, 39.8727,
41.2917

■ 29.3876, 22.4553,
18.4977

■ 46.4803, 47.8115,
51.4147

■ 26.7531, 18.6080,
13.2368

■ 52.5542, 56.8952,
62.8854

■ 24.6997, 15.6408,
9.0390

■ 59.4061, 67.1667,
75.7508

■ 23.1830, 13.4839,
5.8318

■ 67.0622, 78.6667,
90.0555

■ 22.1526, 12.0571,
3.5333

■ 74.5813, 89.5016,
105.5202

■ 21.5478, 11.2638,
2.0487

■ 75.0453, 89.6872,
107.9638

■ 21.3327, 10.9862,
1.5066

Harmonies

Analogous

The Analogous color harmony consists of three colors that are next to each other on the color wheel.



36.5269, 33.0318, 39.9873



36.5538, 33.0318, 32.4662



35.1465, 33.0318, 26.7410

Triad

The Triadic color harmony groups three colors that are evenly spaced from another and form a triangle on the color wheel.



36.5538, 33.0318, 32.4662



27.9834, 33.0318, 26.5850



30.0603, 33.0318, 51.8104

Complementary

The Complementary color scheme is a pair of colors which are on the opposite of each other on the color wheel.



36.5538, 33.0318, 32.4662



38.7794, 46.3022, 53.3500

Split Complementary

Split-complementary colors differ from the complementary color scheme. The scheme consists of three colors, the original color and two neighbors of the complement color.



27.9218, 33.0318, 47.1006



36.5538, 33.0318, 32.4662



26.7691, 33.0318, 32.2238

Square

The Square scheme is like the rectangle color scheme, but the four colors are evenly spaced on the color wheel.



36.5538, 33.0318, 32.4662



30.1487, 33.0318, 23.6813



26.7473, 33.0318, 39.7087



32.6767, 33.0318, 51.8993

Rectangle

The Rectangle color scheme consists of four colors that form a rectangle on the color wheel.



36.5538, 33.0318, 32.4662



33.6273, 33.0318, 24.4119



26.7473, 33.0318, 39.7087



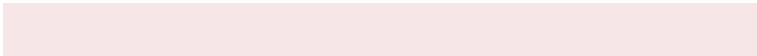
29.2652, 33.0318, 50.6887

Sweetspot

The Sweet Spot groups the original color and five complimentary colors.



36.5547, 33.0333, 32.4669



81.2882, 82.2513, 87.5935



39.3728, 34.0299, 53.2088



17.7177, 17.8640, 18.9832



92.9021, 97.7402, 106.4391



19.4759, 20.4902, 22.3138

Same Dimension

The Same Dimension uses a secret algorithm to generate beautiful new colors.



36.5547, 33.0333, 32.4669



62.3601, 54.1104, 51.3329



39.2612, 38.9439, 31.8351



9.5629, 9.5495, 10.0874



14.1977, 7.3102, 1.0689



0.5677, 0.2910, 0.1026

Inverse Universe

The Inverse Universe completely reimagines the original color for something new.



36.5547, 33.0333, 32.4669



62.3601, 54.1104, 51.3329



35.4737, 39.0013, 54.3739



9.5629, 9.5495, 10.0874



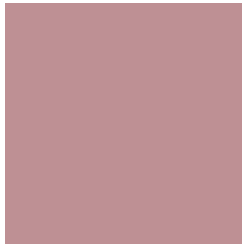
14.1977, 7.3102, 1.0689



0.5677, 0.2910, 0.1026

Previews

White Background



This preview shows how the XYZ color 36.5538, 33.0318, 32.4662 looks on a white background.

Color Contrast Check

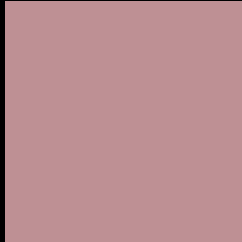
Large Text (above 18pt) WCAG AA × Fail

Any Text WCAG AA × Fail

Large Text (above 18pt) WCAG AAA × Fail

Any Text WCAG AAA × Fail

Black Background



This preview shows how the XYZ color 36.5538, 33.0318, 32.4662 looks on a black background.

Color Contrast Check

Large Text (above 18pt) WCAG AA ✓ Pass

Any Text WCAG AA ✓ Pass

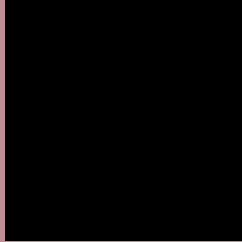
Large Text (above 18pt) WCAG AAA ✓ Pass

Any Text WCAG AAA ✓ Pass

If you want to check with other color combinations, try the [Color Contrast Checker](#).

XYZ 36.5538, 33.0318, 32.4662

Background



This preview shows how black text looks on a background with the XYZ color 36.5538, 33.0318, 32.4662.



This preview shows how white text looks on a background with the XYZ color 36.5538, 33.0318,

Color Blindness Simulation

Color vision deficiency is a very complex topic, and I could not describe the different causes any better than Wikipedia does, so if you want to learn more, you should check out their [article about color blindness](#).

Dichromacy



Original Color

36.5538, 33.0318, 32.4662

Protanopia

31.8522, 33.1467, 35.2910

Deuteranopia

33.7886, 33.2385, 32.2386



Tritanopia

37.1411, 33.0544, 34.9944

Trichromacy



Original Color

36.5538, 33.0318, 32.4662

Protanomaly

33.3117, 32.9463, 34.3093

Deuteranomaly

34.6788, 32.9897, 32.1436

Tritanomaly

36.9758, 32.9883, 34.1243

Monochromacy



Original Color

36.5538, 33.0318, 32.4662

Achromatopsia

32.4990, 34.1914, 37.2345

Achromatomaly

33.8015, 33.6616, 35.2877

CSS Examples

Text

The CSS property to change the color of the text to XYZ 36.5538, 33.0318, 32.4662 is called "color". The color property can be set on classes, ids or directly on the HTML element.

This example shows how text in the color `rgb(190, 144, 148)` looks like.

```
.text, #text, p{  
    color:rgb(190, 144, 148)  
}
```

If you want to add a text shadow in that color use the text-shadow property, you can generate a text shadow directly with our [CSS Text Shadow Generator](#).

Here you see how black text with a 4 pixel rgb(190, 144, 148) colored shadow looks like.

```
.shadow{ text-shadow: 4px 4px 2px rgb(190, 144, 148) }
```

Border

The CSS property to change the border of an element to XYZ 36.5538, 33.0318, 32.4662 is called "border". The border property can be set on classes, ids or directly on the HTML element.

This example shows the color as border, it can be applied via the CSS property "border" or "border-color".

```
.border, #border, table{ border:4px solid rgb(190, 144, 148) }
```


If only the border color should be changed use the property `border-color`.

```
.border{ border-color:rgb(190, 144, 148) }
```

If you want to add a box shadow in that color use:

Here you see how a box with a 4 pixel `rgb(190, 144, 148)` colored shadow looks like.

```
.boxshadow{ -moz-box-shadow:4px 4px 4px  
4px rgb(190, 144, 148); -webkit-box-  
shadow:4px 4px 4px 4px rgb(190, 144, 148);  
box-shadow:4px 4px 4px 4px rgb(190, 144,  
148) }
```

Background

The CSS property to change the background color of an element to XYZ 36.5538, 33.0318, 32.4662 is called "background". The background property can be set on classes, ids or directly on the HTML element.

```
.background, #background, body{  
background: rgb(190, 144, 148) }
```

If only the background color should be changed can be used:

```
.background{ background-color: rgb(190,  
144, 148) }
```

This example shows the color as background, it is applied via the CSS property "background".

To optimize and compress your CSS code, you can use our [online CSS compressor and optimizer](#) based on csstidy. If you want to create a linear or radial gradient as background or border, check our [CSS Gradient Generator](#).

Hey! You found this booklet interesting? Support Converting Colors with the new Membership Option!

The pro membership hides all ads, plus gives you double the colors in the color bucket, and more awesome pro features!

[Learn more, Memberships starting at \\$2.50/m!](#)

**Follow me
on Twitter!**

@ConvertingColor