

Converting Colors

XYZ(36.4451, 33.0464, 29.2687)

Have a look what the booklet for
XYZ(36.4451, 33.0464, 29.2687)
contains.

XYZ(36.4451, 33.0464, 29.2687)	3
<i>Conversions</i>	4
<i>Details</i>	6
<i>Harmonies</i>	12
<i>Previews</i>	24
<i>Color Blindness Simulation</i>	28
<i>CSS Examples</i>	31

Color

**XYZ(36.4451, 33.0464,
29.2687)**

Conversions

Conversions Part 1

Format	Color
Hex	C0908C
RGB	192, 144, 140
RGB Percent	75%, 56%, 55%
CMY	0.2471, 0.4353, 0.4510
CMYK	0.00, 0.25, 0.27, 0.25
HSL	5°, 29%, 65%
HSV	5°, 27%, 75%
XYZ	36.4451, 33.0464, 29.2687
YIQ	157.8960, 29.8920, 8.9320

Conversions

Conversions Part 2

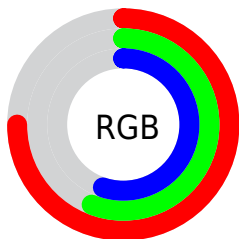
Format	Color
R _Y B	192, 144, 140
Decimal	12619916
CIE Lab	64.20, 17.57, 9.20
CIE LCh	64, 19.828, 27.637
Yxy	33.0464, 0.3690, 0.3346
Android (android.graphics.Color)	4290809996 (0xFFC0908C)
YUV	157.8960, -8.8227, 29.9092
Hunter-Lab	57.4860, 12.5653, 10.0530

Details

The XYZ color **36.4451, 33.0464, 29.2687** is a light color, and the websafe version is hex **CC9999**. A complement of this color would be **38.3124, 45.3464, 56.6028**, and the grayscale version is **32.4822, 34.1738, 37.2153**.

A 20% lighter version of the original color is **68.9986, 64.4229, 59.8372**, and **16.0763, 13.8853, 11.5057** is the 20% darker color. If you saturate the color by 10%, you get **32.6744, 27.5763, 21.6259**, and if you desaturate by 10%, it is **40.8860, 39.4611, 38.3543**.

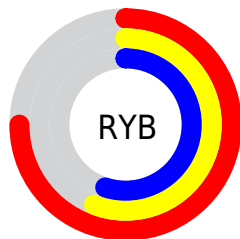
Distribution



Red (75%)

Green (56%)

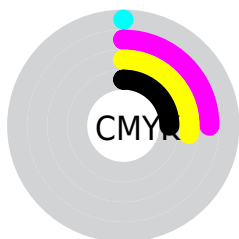
Blue (55%)



Red (75%)

Yellow (56%)

Blue (55%)

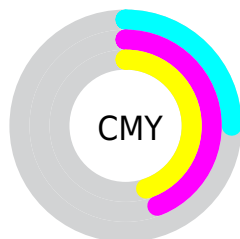


Cyan (0%)

Magenta (25%)

Yellow (27%)

Black (25%)



Cyan (25%)


Magenta (44%)


Yellow (45%)

Brightness & Saturation Gradients


These gradients show how the XYZ color 36.4451, 33.0464, 29.2687 changes by changing the brightness by 10 percent. The first figure shows a shift by +10% for each color and the second figure -10%.


Similar to the brightness gradients but the following saturation gradients show a change of the XYZ color 36.4451, 33.0464, 29.2687 by changing the saturation by 10% instead.


 36.4451, 33.0464,
29.2687

 36.4451, 33.0464,
29.2687


322.2992,
315.8588, 312.5812


 24.9498, 22.1620,
19.0369


 69.0379, 64.4480,
59.5510

 16.1682, 13.9760,
11.5198


 90.8662, 85.7339,
80.4385

 9.7349, 8.1040,
6.2991


 116.8695,
111.2558, 105.7150

 5.2844, 4.1615,
2.9561

147.4132,
141.3981, 135.7991

 2.4516, 1.7643,
1.0722

182.8627,
176.5451, 171.1092

 0.8709, 0.4648,
0.0000

223.5833,

 0.0000, 0.0000,

217.0813, 212.0638

0.0000

269.9403,
263.3911, 259.0817

■ 36.4451, 33.0464,
29.2687

■ 36.4451, 33.0464,
29.2687

■ 32.6744, 27.5763,
21.6259

■ 40.8860, 39.4611,
38.3543

■ 29.5388, 23.0018,
15.3498

■ 46.0246, 46.8572,
48.9496

■ 27.0040, 19.2766,
10.3604

■ 51.8903, 55.2751,
61.1195

■ 25.0314, 16.3482,
6.5684

■ 58.5097, 64.7517,
74.9247

■ 23.5780, 14.1585,
3.8731

■ 65.9084, 75.3220,
90.4227

■ 22.5944, 12.6413,
2.1576

■ 74.0782, 87.0063,
107.4973

■ 22.0183, 11.7174,
1.2620

■ 75.5483, 89.9465,
107.9873

■ 21.9061, 11.5420,
1.0733

Harmonies

Analogous

The Analogous color harmony consists of three colors that are next to each other on the color wheel.



37.1252, 33.0464, 36.6238



36.4451, 33.0464, 29.2687



34.3924, 33.0464, 24.4270

Triad

The Triadic color harmony groups three colors that are evenly spaced from another and form a triangle on the color wheel.



36.4451, 33.0464, 29.2687



27.0619, 33.0464, 28.3162



31.1873, 33.0464, 53.7692

Complementary

The Complementary color scheme is a pair of colors which are on the opposite of each other on the color wheel.



36.4451, 33.0464, 29.2687



38.3124, 45.3464, 56.6028

Split Complementary

Split-complementary colors differ from the complementary color scheme. The scheme consists of three colors, the original color and two neighbors of the complement color.



28.6045, 33.0464, 50.7041



36.4451, 33.0464, 29.2687



26.3130, 33.0464, 35.3476

Square

The Square scheme is like the rectangle color scheme, but the four colors are evenly spaced on the color wheel.



36.4451, 33.0464, 29.2687



28.9686, 33.0464, 23.9374



26.8607, 33.0464, 43.6503



33.9840, 33.0464, 51.5103

Rectangle

The Rectangle color scheme consists of four colors that form a rectangle on the color wheel.



36.4451, 33.0464, 29.2687



32.5810, 33.0464, 22.8810



26.8607, 33.0464, 43.6503



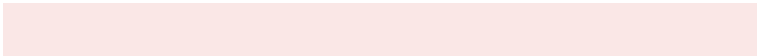
30.2666, 33.0464, 53.3185

Sweetspot

The Sweet Spot groups the original color and five complimentary colors.



36.4460, 33.0479, 29.2694



82.3598, 83.4160, 86.5553



40.2513, 33.6169, 52.2464



17.3519, 17.4398, 17.9141



92.9021, 97.7402, 106.4391



19.4759, 20.4902, 22.3138

Same Dimension

The Same Dimension uses a secret algorithm to generate beautiful new colors.



36.4460, 33.0479, 29.2694



62.1806, 54.2908, 45.1984



40.7471, 41.6501, 30.7031



10.1341, 10.1997, 10.4965



14.7635, 7.8127, 0.7299



0.6597, 0.3812, 0.0388

Inverse Universe

The Inverse Universe completely reimagines the original color for something new.



38.3124, 45.3464, 56.6028



66.0759, 79.9812, 102.3156



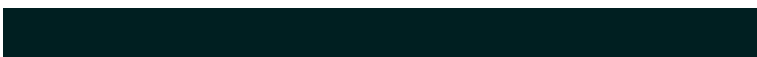
33.3445, 35.4106, 54.9468



10.3001, 11.2914, 12.9214



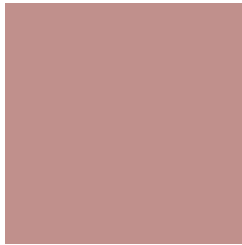
17.0362, 23.8290, 37.2582



0.7562, 1.0697, 1.6165

Previews

White Background



This preview shows how the XYZ color 36.4451, 33.0464, 29.2687 looks on a white background.

Color Contrast Check

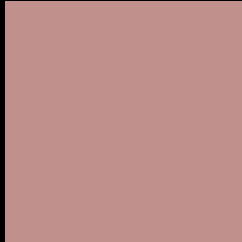
Large Text (above 18pt) WCAG AA × Fail

Any Text WCAG AA × Fail

Large Text (above 18pt) WCAG AAA × Fail

Any Text WCAG AAA × Fail

Black Background



This preview shows how the XYZ color 36.4451, 33.0464, 29.2687 looks on a black background.

Color Contrast Check

Large Text (above 18pt) WCAG AA ✓ Pass

Any Text WCAG AA ✓ Pass

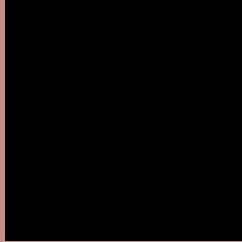
Large Text (above 18pt) WCAG AAA ✓ Pass

Any Text WCAG AAA ✓ Pass

If you want to check with other color combinations, try the [Color Contrast Checker](#).

XYZ 36.4451, 33.0464, 29.2687

Background



This preview shows how black text looks on a background with the XYZ color 36.4451, 33.0464, 29.2687.



This preview shows how white text looks on a background with the XYZ color 36.4451, 33.0464,

Color Blindness Simulation

Color vision deficiency is a very complex topic, and I could not describe the different causes any better than Wikipedia does, so if you want to learn more, you should check out their [article about color blindness](#).

Dichromacy



Original Color

36.4451, 33.0464, 29.2687

Protanopia

31.6076, 33.0951, 31.9162

Deuteranopia

33.6980, 33.0239, 29.0243



Tritanopia

37.4151, 32.9834, 34.5314

Trichromacy



Original Color

36.4451, 33.0464, 29.2687

Protanomaly

33.1139, 32.9175, 30.9940

Deuteranomaly

34.5415, 32.9890, 28.9731

Tritanomaly

37.1601, 33.1205, 32.4513

Monochromacy



Original Color

36.4451, 33.0464, 29.2687

Achromatopsia

32.4990, 34.1914, 37.2345

Achromatomaly

33.5547, 33.5629, 33.9879

CSS Examples

Text

The CSS property to change the color of the text to XYZ 36.4451, 33.0464, 29.2687 is called "color". The color property can be set on classes, ids or directly on the HTML element.

This example shows how text in the color `rgb(192, 144, 140)` looks like.

```
.text, #text, p{  
    color:rgb(192, 144, 140)  
}
```

If you want to add a text shadow in that color use the text-shadow property, you can generate a text shadow directly with our [CSS Text Shadow Generator](#).

Here you see how black text with a 4 pixel rgb(192, 144, 140) colored shadow looks like.

```
.shadow{ text-shadow: 4px 4px 2px rgb(192, 144, 140) }
```

Border

The CSS property to change the border of an element to XYZ 36.4451, 33.0464, 29.2687 is called "border". The border property can be set on classes, ids or directly on the HTML element.

This example shows the color as border, it can be applied via the CSS property "border" or "border-color".

```
.border, #border, table{ border:4px solid rgb(192, 144, 140) }
```


If only the border color should be changed use the property `border-color`.

```
.border{ border-color:rgb(192, 144, 140) }
```

If you want to add a box shadow in that color use:

Here you see how a box with a 4 pixel `rgb(192, 144, 140)` colored shadow looks like.

```
.boxshadow{ -moz-box-shadow:4px 4px 4px  
4px rgb(192, 144, 140); -webkit-box-  
shadow:4px 4px 4px 4px rgb(192, 144, 140);  
box-shadow:4px 4px 4px 4px rgb(192, 144,  
140) }
```

Background

The CSS property to change the background color of an element to XYZ 36.4451, 33.0464, 29.2687 is called "background". The background property can be set on classes, ids or directly on the HTML element.

```
.background, #background, body{  
background: rgb(192, 144, 140) }
```

If only the background color should be changed can be used:

```
.background{ background-color: rgb(192,  
144, 140) }
```

This example shows the color as background, it is applied via the CSS property "background".

To optimize and compress your CSS code, you can use our [online CSS compressor and optimizer](#) based on csstidy. If you want to create a linear or radial gradient as background or border, check our [CSS Gradient Generator](#).

Hey! You found this booklet interesting? Support Converting Colors with the new Membership Option!

The pro membership hides all ads, plus gives you double the colors in the color bucket, and more awesome pro features!

[Learn more, Memberships starting at \\$2.50/m!](#)

**Follow me
on Twitter!**

@ConvertingColor