

Converting Colors

XYZ(36.4487, 35.7785, 30.3940)

Have a look what the booklet for
XYZ(36.4487, 35.7785, 30.3940)
contains.

XYZ(36.5381, 35.9203, 30.5987)	3
<i>Conversions</i>	4
<i>Details</i>	6
<i>Harmonies</i>	12
<i>Previews</i>	24
<i>Color Blindness Simulation</i>	28
<i>CSS Examples</i>	31

Color

**XYZ(36.5381, 35.9203,
30.5987)**

Conversions

Conversions Part 1

Format	Color
Hex	B89C8E
RGB	184, 156, 142
RGB Percent	72%, 61%, 56%
CMY	0.2784, 0.3882, 0.4431
CMYK	0.00, 0.15, 0.23, 0.28
HSL	20°, 23%, 64%
HSV	20°, 23%, 72%
XYZ	36.5381, 35.9203, 30.5987
YIQ	162.7760, 21.1820, 1.5820

Conversions

Conversions Part 2

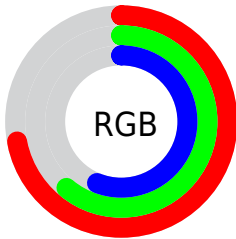
Format	Color
R_{YB}	184, 163, 142
Decimal	12098702
CIE _{Lab}	66.46, 8.13, 11.17
CIE _{LCh}	66, 13.815, 53.947
Yxy	35.9203, 0.3545, 0.3485
Android (android.graphics.Color)	4290288782 (0xFFB89C8E)
YUV	162.7760, -10.2426, 18.6134
Hunter-Lab	59.9335, 3.9377, 11.6833

Details

The XYZ color **36.5381, 35.9203, 30.5987** is a light color, and the websafe version is hex **CC9999**. A complement of this color would be **34.1814, 37.9598, 50.8730**, and the grayscale version is **34.7477, 36.5573, 39.8109**.

A 20% lighter version of the original color is **68.9456, 68.6040, 61.8326**, and **16.1893, 15.6217, 12.2872** is the 20% darker color. If you saturate the color by 10%, you get **33.3140, 31.5033, 23.2617**, and if you desaturate by 10%, it is **40.2000, 40.8475, 39.2076**.

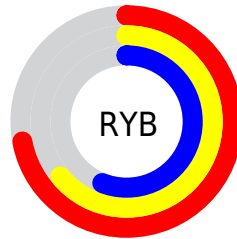
Distribution



Red (72%)

Green (61%)

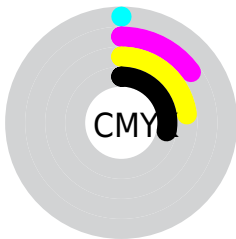
Blue (56%)



Red (72%)

Yellow (64%)

Blue (56%)

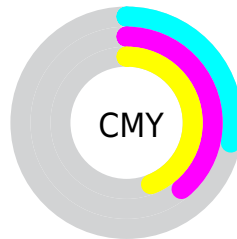


Cyan (0%)

Magenta (15%)

Yellow (23%)

Black (28%)



Cyan (28%)

Magenta (39%)

Yellow (44%)

Brightness & Saturation Gradients

These gradients show how the XYZ color 36.5381, 35.9203, 30.5987 changes by changing the brightness by 10 percent. The first figure shows a shift by +10% for each color and the second figure -10%.

Similar to the brightness gradients but the following saturation gradients show a change of the XYZ color 36.5381, 35.9203, 30.5987 by changing the saturation by 10% instead.

■ 36.5381, 35.9203,
30.5987

■ 36.5381, 35.9203,
30.5987

322.6968,
328.6121, 318.9790

■ 25.0221, 24.3726,
20.0376

■ 69.1803, 68.9090,
61.6799

■ 16.2223, 15.6103,
12.2380

■ 91.0371, 91.1189,
83.0370

■ 9.7735, 9.2488,
6.7815

117.0717,
117.6516, 108.8298

■ 5.3101, 4.9038,
3.2494

147.6492,
148.8916, 139.4769

■ 2.4670, 2.1909,
1.2234

183.1352,
185.2233, 175.3969

■ 0.8786, 0.7150,
0.0000

223.8948,

■ 0.0000, 0.0000,

227.0310, 217.0082

0.0000

270.2936,
274.6991, 264.7294

■ 36.5381, 35.9203,
30.5987

■ 36.5381, 35.9203,
30.5987

■ 33.3140, 31.5033,
23.2617

■ 40.2000, 40.8475,
39.2076

■ 30.5076, 27.5749,
17.1334

■ 44.3132, 46.2958,
49.1429

■ 28.1012, 24.1189,
12.1486

■ 48.8941, 52.2822,
60.4588

■ 26.0748, 21.1165,
8.2348

■ 53.9572, 58.8212,
73.2056

■ 24.4064, 18.5475,
5.3114

■ 59.5166, 65.9268,
87.4311

■ 23.0712, 16.3899,
3.2858

■ 65.5857, 73.6124,
103.1811

■ 22.0407, 14.6191,
2.0477

■ 69.5276, 80.8311,
106.5452

■ 21.4547, 13.5654,
1.4876

■ 73.2986, 88.3731,
107.8022

■ 73.5772, 88.9304,
107.8951

Harmonies

Analogous

The Analogous color harmony consists of three colors that are next to each other on the color wheel.



37.9102, 35.9203, 34.6636



36.5381, 35.9203, 30.5987



34.5627, 35.9203, 28.8337

Triad

The Triadic color harmony groups three colors that are evenly spaced from another and form a triangle on the color wheel.



36.5381, 35.9203, 30.5987



30.3334, 35.9203, 37.9211



35.7826, 35.9203, 50.4836

Complementary

The Complementary color scheme is a pair of colors which are on the opposite of each other on the color wheel.



36.5381, 35.9203, 30.5987



34.1814, 37.9598, 50.8730

Split Complementary

Split-complementary colors differ from the complementary color scheme. The scheme consists of three colors, the original color and two neighbors of the complement color.



33.7231, 35.9203, 51.5795



36.5381, 35.9203, 30.5987



30.6306, 35.9203, 43.9237

Square

The Square scheme is like the rectangle color scheme, but the four colors are evenly spaced on the color wheel.



36.5381, 35.9203, 30.5987



31.0227, 35.9203, 32.7775



31.8514, 35.9203, 49.0717



37.4619, 35.9203, 46.2121

Rectangle

The Rectangle color scheme consists of four colors that form a rectangle on the color wheel.



36.5381, 35.9203, 30.5987



33.1906, 35.9203, 29.0567



31.8514, 35.9203, 49.0717



35.1097, 35.9203, 51.2525

Sweetspot

The Sweet Spot groups the original color and five complimentary colors.



36.5391, 35.9219, 30.5994



77.0275, 79.5672, 81.0544



36.6962, 32.4390, 42.3577



16.5102, 17.0268, 17.2431



88.6918, 93.3107, 101.6153



17.8044, 18.7317, 20.3988

Same Dimension

The Same Dimension uses a secret algorithm to generate beautiful new colors.



36.5391, 35.9219, 30.5994



63.4359, 61.3002, 49.0363



40.3720, 43.5879, 31.8771



9.2427, 9.4884, 9.4512



14.8453, 9.4670, 1.0449



0.5818, 0.4506, 0.0563

Inverse Universe

The Inverse Universe completely reimagines the original color for something new.



34.1814, 37.9598, 50.8730



58.4614, 65.5908, 91.7837



30.5549, 30.7068, 49.6641



9.0076, 9.6924, 11.4755



10.8814, 12.2225, 33.0387



0.4380, 0.5396, 1.1828

Previews

White Background



This preview shows how the XYZ color 36.5381, 35.9203, 30.5987 looks on a white background.

Color Contrast Check

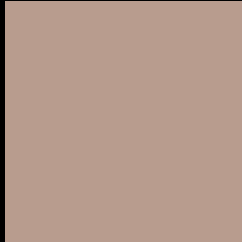
Large Text (above 18pt) WCAG AA × Fail

Any Text WCAG AA × Fail

Large Text (above 18pt) WCAG AAA × Fail

Any Text WCAG AAA × Fail

Black Background



This preview shows how the XYZ color 36.5381, 35.9203, 30.5987 looks on a black background.

Color Contrast Check

Large Text (above 18pt) WCAG AA ✓ Pass

Any Text WCAG AA ✓ Pass

Large Text (above 18pt) WCAG AAA ✓ Pass

Any Text WCAG AAA ✓ Pass

If you want to check with other color combinations, try the [Color Contrast Checker](#).

XYZ 36.5381, 35.9203, 30.5987

Background



This preview shows how black text looks on a background with the XYZ color 36.5381, 35.9203, 30.5987.



This preview shows how white text looks on a background with the XYZ color 36.5381, 35.9203,

Color Blindness Simulation

Color vision deficiency is a very complex topic, and I could not describe the different causes any better than Wikipedia does, so if you want to learn more, you should check out their [article about color blindness](#).

Dichromacy



Original Color

36.5381, 35.9203, 30.5987

Protanopia

34.2179, 35.9691, 31.9273

Deuteranopia

36.7785, 36.0442, 30.6100



Tritanopia

38.6763, 36.0639, 40.5199

Trichromacy



Original Color

36.5381, 35.9203, 30.5987

Protanomaly

34.8877, 35.8086, 31.4585

Deuteranomaly

36.7785, 36.0442, 30.6100

Tritanomaly

37.8911, 35.9846, 36.8469

Monochromacy



Original Color

36.5381, 35.9203, 30.5987

Achromatopsia

34.8123, 36.6253, 39.8849

Achromatomaly

35.2818, 36.1661, 36.1316

CSS Examples

Text

The CSS property to change the color of the text to XYZ 36.5381, 35.9203, 30.5987 is called "color". The color property can be set on classes, ids or directly on the HTML element.

This example shows how text in the color `rgb(184, 156, 142)` looks like.

```
.text, #text, p{  
    color:rgb(184, 156, 142)  
}
```

If you want to add a text shadow in that color use the text-shadow property, you can generate a text shadow directly with our [CSS Text Shadow Generator](#).

Here you see how black text with a 4 pixel rgb(184, 156, 142) colored shadow looks like.

```
.shadow{ text-shadow: 4px 4px 2px rgb(184, 156, 142) }
```

Border

The CSS property to change the border of an element to XYZ 36.5381, 35.9203, 30.5987 is called "border". The border property can be set on classes, ids or directly on the HTML element.

This example shows the color as border, it can be applied via the CSS property "border" or "border-color".

```
.border, #border, table{ border:4px solid rgb(184, 156, 142) }
```


If only the border color should be changed use the property `border-color`.

```
.border{ border-color:rgb(184, 156, 142) }
```

If you want to add a box shadow in that color use:

Here you see how a box with a 4 pixel `rgb(184, 156, 142)` colored shadow looks like.

```
.boxshadow{ -moz-box-shadow:4px 4px 4px  
4px rgb(184, 156, 142); -webkit-box-  
shadow:4px 4px 4px 4px rgb(184, 156, 142);  
box-shadow:4px 4px 4px 4px rgb(184, 156,  
142) }
```

Background

The CSS property to change the background color of an element to XYZ 36.5381, 35.9203, 30.5987 is called "background". The background property can be set on classes, ids or directly on the HTML element.

```
.background, #background, body{  
background: rgb(184, 156, 142) }
```

If only the background color should be changed can be used:

```
.background{ background-color: rgb(184,  
156, 142) }
```

This example shows the color as background, it is applied via the CSS property "background".

To optimize and compress your CSS code, you can use our [online CSS compressor and optimizer](#) based on csstidy. If you want to create a linear or radial gradient as background or border, check our [CSS Gradient Generator](#).

Hey! You found this booklet interesting? Support Converting Colors with the new Membership Option!

The pro membership hides all ads, plus gives you double the colors in the color bucket, and more awesome pro features!

[Learn more, Memberships starting at \\$2.50/m!](#)

**Follow me
on Twitter!**

@ConvertingColor