

Converting Colors

XYZ(36.4839, 33.1663, 26.6709)

Have a look what the booklet for
XYZ(36.4839, 33.1663, 26.6709)
contains.

XYZ(36.4550, 33.1093, 26.6596)	3
<i>Conversions</i>	4
<i>Details</i>	6
<i>Harmonies</i>	12
<i>Previews</i>	24
<i>Color Blindness Simulation</i>	28
<i>CSS Examples</i>	31

Color

**XYZ(36.4550, 33.1093,
26.6596)**

Conversions

Conversions Part 1

Format	Color
Hex	C29085
RGB	194, 144, 133
RGB Percent	76%, 56%, 52%
CMY	0.2392, 0.4353, 0.4784
CMYK	0.00, 0.26, 0.31, 0.24
HSL	11°, 33%, 64%
HSV	11°, 31%, 76%
XYZ	36.4550, 33.1093, 26.6596
YIQ	157.6960, 33.3310, 7.1790

Conversions

Conversions Part 2

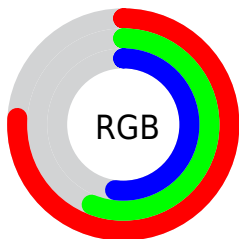
Format	Color
R_{YB}	194, 146, 133
Decimal	12750981
CIE Lab	64.25, 17.38, 13.24
CIE LCh	64, 21.848, 37.303
Yxy	33.1093, 0.3789, 0.3441
Android (android.graphics.Color)	4290941061 (0xFFC29085)
YUV	157.6960, -12.1751, 31.8386
Hunter-Lab	57.5407, 12.3928, 12.8084

Details

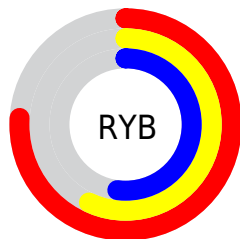
The XYZ color **36.4550, 33.1093, 26.6596** is a light color, and the websafe version is hex **CC9999**. A complement of this color would be **36.3433, 42.7470, 57.3745**, and the grayscale version is **32.4052, 34.0928, 37.1271**.

A 20% lighter version of the original color is **69.2019, 64.6288, 55.2816**, and **16.1231, 13.9422, 10.0249** is the 20% darker color. If you saturate the color by 10%, you get **32.9956, 28.1408, 19.4934**, and if you desaturate by 10%, it is **40.5030, 38.8583, 35.2439**.

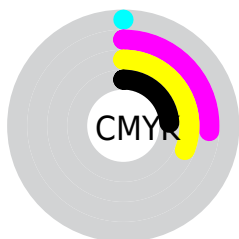
Distribution



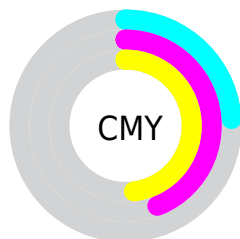
- Red (76%)
- Green (56%)
- Blue (52%)



- Red (76%)
- Yellow (57%)
- Blue (52%)



- Cyan (0%)
- Magenta (26%)
- Yellow (31%)
- Black (24%)





- Cyan (24%)
- Magenta (44%)
- Yellow (48%)

Brightness & Saturation Gradients

These gradients show how the XYZ color 36.4550, 33.1093, 26.6596 changes by changing the brightness by 10 percent. The first figure shows a shift by +10% for each color and the second figure -10%.


Similar to the brightness gradients but the following saturation gradients show a change of the XYZ color 36.4550, 33.1093, 26.6596 by changing the saturation by 10% instead.


 36.4550, 33.1093,
26.6596


 36.4550, 33.1093,
26.6596


322.3416,
316.1420, 299.7130


 24.9575, 22.2102,
17.0876


 69.0531, 64.5461,
55.3342

 16.1740, 14.0114,
10.1343


 90.8844, 85.8527,
75.2739

 9.7390, 8.1286,
5.3813

 116.8910,
111.3971, 99.5065

 5.2872, 4.1774,
2.4101

147.4383,
141.5638, 128.4507

 2.4532, 1.7733,
0.7919

182.8917,
176.7373, 162.5248

 0.8717, 0.4704,
0.0000

223.6165,

 0.0000, 0.0000,

217.3019, 202.1476

0.0000

269.9780,
263.6420, 247.7375

■ 36.4550, 33.1093,
26.6596

■ 36.4550, 33.1093,
26.6596

■ 32.9956, 28.1408,
19.4934

■ 40.5030, 38.8583,
35.2439

■ 30.0943, 23.9146,
13.6669

■ 45.1627, 45.4148,
45.3152

■ 27.7220, 20.3960,
9.0967

■ 50.4594, 52.8101,
56.9401

■ 25.8457, 17.5457,
5.6895

■ 56.4160, 61.0725,
70.1808

■ 24.4285, 15.3206,
3.3388

■ 63.0545, 70.2290,
85.0959

■ 23.4280, 13.6721,
1.9183

■ 70.3954, 80.3055,
101.7411

■ 22.8491, 12.6712,
1.2415

■ 76.0581, 90.2093,
108.0112

Harmonies

Analogous

The Analogous color harmony consists of three colors that are next to each other on the color wheel.



37.7624, 33.1093, 33.9229



36.4550, 33.1093, 26.6596



33.8269, 33.1093, 22.4789

Triad

The Triadic color harmony groups three colors that are evenly spaced from another and form a triangle on the color wheel.



36.4550, 33.1093, 26.6596



26.2825, 33.1093, 29.8541



32.2335, 33.1093, 55.7813

Complementary

The Complementary color scheme is a pair of colors which are on the opposite of each other on the color wheel.



36.4550, 33.1093, 26.6596



36.3433, 42.7470, 57.3745

Split Complementary

Split-complementary colors differ from the complementary color scheme. The scheme consists of three colors, the original color and two neighbors of the complement color.



29.2241, 33.1093, 54.2123



36.4550, 33.1093, 26.6596



25.9175, 33.1093, 38.2651

Square

The Square scheme is like the rectangle color scheme, but the four colors are evenly spaced on the color wheel.



36.4550, 33.1093, 26.6596



27.9922, 33.1093, 24.1008



26.9604, 33.1093, 47.4220



35.2233, 33.1093, 51.4126

Rectangle

The Rectangle color scheme consists of four colors that form a rectangle on the color wheel.



36.4550, 33.1093, 26.6596



31.7508, 33.1093, 21.5408



26.9604, 33.1093, 47.4220



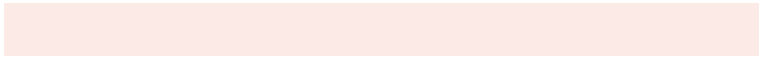
31.1896, 33.1093, 55.9415

Sweetspot

The Sweet Spot groups the original color and five complimentary colors.



36.4559, 33.1109, 26.6603



83.9269, 85.2254, 86.6906



39.2701, 31.6984, 49.3046



18.0805, 18.2454, 18.3321



0.0000, 0.0000, 0.0000



20.3446, 21.4041, 23.3091

Same Dimension

The Same Dimension uses a secret algorithm to generate beautiful new colors.



36.4559, 33.1109, 26.6603



61.4550, 53.4019, 38.7520



41.5537, 43.3064, 28.3595



10.2169, 10.3652, 10.5241



15.0664, 8.4185, 0.8309



0.6969, 0.4556, 0.0512

Inverse Universe

The Inverse Universe completely reimagines the original color for something new.



36.3433, 42.7470, 57.3745



61.2028, 73.6760, 103.4650



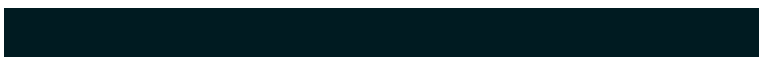
30.8566, 31.7736, 55.5456



10.2090, 11.1094, 12.8911



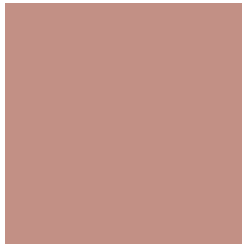
14.6087, 18.9739, 36.4490



0.6725, 0.9023, 1.5886

Previews

White Background



This preview shows how the XYZ color 36.4550, 33.1093, 26.6596 looks on a white background.

Color Contrast Check

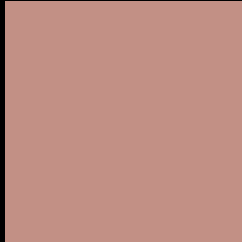
Large Text (above 18pt) WCAG AA × Fail

Any Text WCAG AA × Fail

Large Text (above 18pt) WCAG AAA × Fail

Any Text WCAG AAA × Fail

Black Background



This preview shows how the XYZ color 36.4550, 33.1093, 26.6596 looks on a black background.

Color Contrast Check

Large Text (above 18pt) WCAG AA ✓ Pass

Any Text WCAG AA ✓ Pass

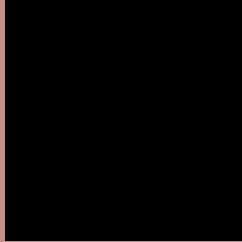
Large Text (above 18pt) WCAG AAA ✓ Pass

Any Text WCAG AAA ✓ Pass

If you want to check with other color combinations, try the [Color Contrast Checker](#).

XYZ 36.4550, 33.1093, 26.6596

Background



This preview shows how black text looks on a background with the XYZ color 36.4550, 33.1093, 26.6596.



This preview shows how white text looks on a background with the XYZ color 36.4550, 33.1093,

Color Blindness Simulation

Color vision deficiency is a very complex topic, and I could not describe the different causes any better than Wikipedia does, so if you want to learn more, you should check out their [article about color blindness](#).

Dichromacy



Original Color

36.4550, 33.1093, 26.6596

Protanopia

31.6529, 33.4275, 29.2100

Deuteranopia

33.8936, 33.1819, 26.4482



Tritanopia

37.9573, 33.0525, 34.0850

Trichromacy



Original Color

36.4550, 33.1093, 26.6596

Protanomaly

33.1992, 33.2613, 28.3372

Deuteranomaly

34.7623, 33.1600, 26.3981

Tritanomaly

37.2895, 32.9924, 31.1909

Monochromacy



Original Color

36.4550, 33.1093, 26.6596

Achromatopsia

32.4990, 34.1914, 37.2345

Achromatomaly

33.6106, 33.6103, 33.1497

CSS Examples

Text

The CSS property to change the color of the text to XYZ 36.4550, 33.1093, 26.6596 is called "color". The color property can be set on classes, ids or directly on the HTML element.

This example shows how text in the color `rgb(194, 144, 133)` looks like.

```
.text, #text, p{  
    color:rgb(194, 144, 133)  
}
```

If you want to add a text shadow in that color use the text-shadow property, you can generate a text shadow directly with our [CSS Text Shadow Generator](#).

Here you see how black text with a 4 pixel rgb(194, 144, 133) colored shadow looks like.

```
.shadow{ text-shadow: 4px 4px 2px rgb(194, 144, 133) }
```

Border

The CSS property to change the border of an element to XYZ 36.4550, 33.1093, 26.6596 is called "border". The border property can be set on classes, ids or directly on the HTML element.

This example shows the color as border, it can be applied via the CSS property "border" or "border-color".

```
.border, #border, table{ border:4px solid rgb(194, 144, 133) }
```


If only the border color should be changed use the property `border-color`.

```
.border{ border-color:rgb(194, 144, 133) }
```

If you want to add a box shadow in that color use:

Here you see how a box with a 4 pixel `rgb(194, 144, 133)` colored shadow looks like.

```
.boxshadow{ -moz-box-shadow:4px 4px 4px 4px rgb(194, 144, 133); -webkit-box-shadow:4px 4px 4px 4px rgb(194, 144, 133); box-shadow:4px 4px 4px 4px rgb(194, 144, 133) }
```

Background

The CSS property to change the background color of an element to XYZ 36.4550, 33.1093, 26.6596 is called "background". The background property can be set on classes, ids or directly on the HTML element.

```
.background, #background, body{  
background: rgb(194, 144, 133) }
```

If only the background color should be changed can be used:

```
.background{ background-color: rgb(194,  
144, 133) }
```

This example shows the color as background, it is applied via the CSS property "background".

To optimize and compress your CSS code, you can use our [online CSS compressor and optimizer](#) based on csstidy. If you want to create a linear or radial gradient as background or border, check our [CSS Gradient Generator](#).

Hey! You found this booklet interesting? Support Converting Colors with the new Membership Option!

The pro membership hides all ads, plus gives you double the colors in the color bucket, and more awesome pro features!

[Learn more, Memberships starting at \\$2.50/m!](#)

**Follow me
on Twitter!**

@ConvertingColor