

Converting Colors

XYZ(36.6673, 36.1280, 31.0278)

Have a look what the booklet for
XYZ(36.6673, 36.1280, 31.0278)
contains.

XYZ(36.7821, 36.2875, 31.0522)	3
<i>Conversions</i>	4
<i>Details</i>	6
<i>Harmonies</i>	12
<i>Previews</i>	24
<i>Color Blindness Simulation</i>	28
<i>CSS Examples</i>	31

Color

**XYZ(36.7821, 36.2875,
31.0522)**

Conversions

Conversions Part 1

Format	Color
Hex	B89D8F
RGB	184, 157, 143
RGB Percent	72%, 62%, 56%
CMY	0.2784, 0.3843, 0.4392
CMYK	0.00, 0.15, 0.22, 0.28
HSL	20°, 22%, 64%
HSV	20°, 22%, 72%
XYZ	36.7821, 36.2875, 31.0522
YIQ	163.4770, 20.5860, 1.3700

Conversions

Conversions Part 2

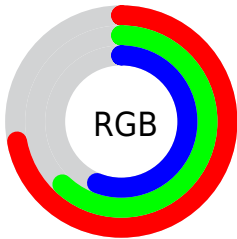
Format	Color
RYB	184, 164, 143
Decimal	12098959
CIELab	66.74, 7.73, 11.01
CIElCh	67, 13.451, 54.919
Yxy	36.2875, 0.3533, 0.3485
Android (android.graphics.Color)	4290289039 (0xFFB89D8F)
YUV	163.4770, -10.0952, 17.9987
Hunter-Lab	60.2391, 3.5740, 11.6044

Details

The XYZ color **36.7821, 36.2875, 31.0522** is a light color, and the websafe version is hex **CC9999**. A complement of this color would be **34.3539, 38.0488, 50.8812**, and the grayscale version is **35.0786, 36.9055, 40.1901**.

A 20% lighter version of the original color is **69.5567, 69.6434, 62.5998**, and **16.3357, 15.8442, 12.5532** is the 20% darker color. If you saturate the color by 10%, you get **33.5520, 31.8779, 23.6534**, and if you desaturate by 10%, it is **40.4461, 41.1985, 39.7244**.

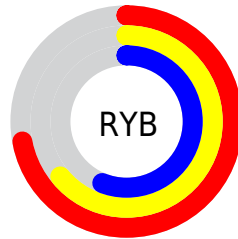
Distribution



Red (72%)

Green (62%)

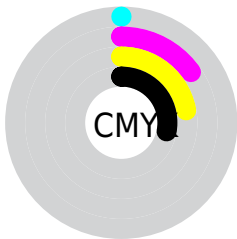
Blue (56%)



Red (72%)

Yellow (64%)

Blue (56%)

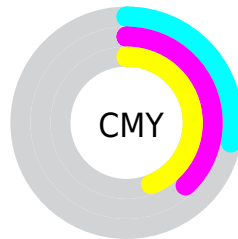


Cyan (0%)

Magenta (15%)

Yellow (22%)

Black (28%)



Cyan (28%)

Magenta (38%)

Yellow (44%)

Brightness & Saturation Gradients

These gradients show how the XYZ color 36.7821, 36.2875, 31.0522 changes by changing the brightness by 10 percent. The first figure shows a shift by +10% for each color and the second figure -10%.

Similar to the brightness gradients but the following saturation gradients show a change of the XYZ color 36.7821, 36.2875, 31.0522 by changing the saturation by 10% instead.

■ 36.7821, 36.2875,
31.0522

■ 36.7821, 36.2875,
31.0522

323.7381,
330.2154, 321.1374

■ 25.2117, 24.6563,
20.3798

■ 69.5535, 69.4756,
62.4028

■ 16.3644, 15.8212,
12.4846

■ 91.4853, 91.8013,
83.9181

■ 9.8749, 9.3977,
6.9481

117.6016,
118.4606, 109.8847

■ 5.3777, 5.0015,
3.3517

148.2677,
149.8379, 140.7212

■ 2.5076, 2.2481,
1.2769

183.8491,
186.3177, 176.8462

■ 0.8991, 0.7461,
0.0427

224.7111,

■ 0.0000, 0.0000,

228.2843, 218.6782

0.0000

271.2189,
276.1220, 266.6358

■ 36.7821, 36.2875,
31.0522

■ 36.7821, 36.2875,
31.0522

■ 33.5520, 31.8779,
23.6534

■ 40.4461, 41.1985,
39.7244

■ 30.7359, 27.9484,
17.4652

■ 44.5571, 46.6213,
49.7244

■ 28.3164, 24.4835,
12.4228

■ 49.1313, 52.5723,
61.1060

■ 26.2740, 21.4651,
8.4541

■ 54.1830, 59.0656,
73.9193

■ 24.5868, 18.8734,
5.4792

■ 59.7260, 66.1149,
88.2120

■ 23.2308, 16.6872,
3.4063

■ 65.7737, 73.7333,
104.0296

■ 22.1780, 14.8828,
2.1264

■ 69.5138, 80.8034,
106.5406

■ 21.5363, 13.7284,
1.5148

■ 73.2364, 88.2486,
107.7815

■ 73.5773, 88.9304,
107.8951

Harmonies

Analogous

The Analogous color harmony consists of three colors that are next to each other on the color wheel.



38.1519, 36.2875, 34.9864



36.7821, 36.2875, 31.0522



34.8370, 36.2875, 29.3910

Triad

The Triadic color harmony groups three colors that are evenly spaced from another and form a triangle on the color wheel.



36.7821, 36.2875, 31.0522



30.7471, 36.2875, 38.5293



36.1607, 36.2875, 50.5386

Complementary

The Complementary color scheme is a pair of colors which are on the opposite of each other on the color wheel.



36.7821, 36.2875, 31.0522



34.3539, 38.0488, 50.8812

Split Complementary

Split-complementary colors differ from the complementary color scheme. The scheme consists of three colors, the original color and two neighbors of the complement color.



34.1457, 36.2875, 51.7220



36.7821, 36.2875, 31.0522



31.0706, 36.2875, 44.4096

Square

The Square scheme is like the rectangle color scheme, but the four colors are evenly spaced on the color wheel.



36.7821, 36.2875, 31.0522



31.3941, 36.2875, 33.4291



32.2955, 36.2875, 49.3811



37.7834, 36.2875, 46.2890

Rectangle

The Rectangle color scheme consists of four colors that form a rectangle on the color wheel.



36.7821, 36.2875, 31.0522



33.4952, 36.2875, 29.6651



32.2955, 36.2875, 49.3811



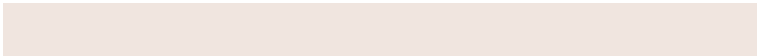
35.5047, 36.2875, 51.3248

Sweetspot

The Sweet Spot groups the original color and five complimentary colors.



36.7831, 36.2891, 31.0530



77.0651, 79.6424, 81.0670



36.8773, 32.7507, 42.5740



16.5189, 17.0443, 17.2460



88.6918, 93.3107, 101.6153



17.8044, 18.7317, 20.3988

Same Dimension

The Same Dimension uses a secret algorithm to generate beautiful new colors.



36.7831, 36.2891, 31.0530



63.5552, 61.5387, 49.0761



40.4805, 43.6840, 32.2854



9.2487, 9.5003, 9.4532



14.9023, 9.5810, 1.0639



0.5842, 0.4556, 0.0571

Inverse Universe

The Inverse Universe completely reimagines the original color for something new.



34.3539, 38.0488, 50.8812



58.3251, 65.3183, 91.7382



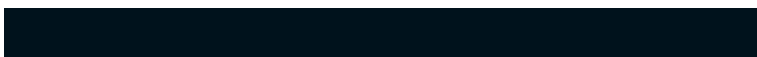
30.8597, 31.0604, 49.7164



9.0014, 9.6800, 11.4734



10.7556, 11.9709, 32.9968



0.4342, 0.5321, 1.1816

Previews

White Background



This preview shows how the XYZ color 36.7821, 36.2875, 31.0522 looks on a white background.

Color Contrast Check

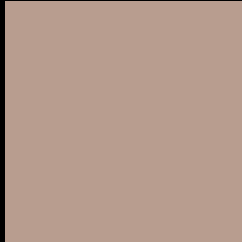
Large Text (above 18pt) WCAG AA × Fail

Any Text WCAG AA × Fail

Large Text (above 18pt) WCAG AAA × Fail

Any Text WCAG AAA × Fail

Black Background



This preview shows how the XYZ color 36.7821, 36.2875, 31.0522 looks on a black background.

Color Contrast Check

Large Text (above 18pt) WCAG AA ✓ Pass

Any Text WCAG AA ✓ Pass

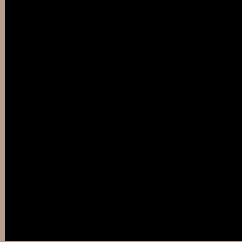
Large Text (above 18pt) WCAG AAA ✓ Pass

Any Text WCAG AAA ✓ Pass

If you want to check with other color combinations, try the [Color Contrast Checker](#).

XYZ 36.7821, 36.2875, 31.0522

Background



This preview shows how black text looks on a background with the XYZ color 36.7821, 36.2875, 31.0522.



This preview shows how white text looks on a background with the XYZ color 36.7821, 36.2875,

Color Blindness Simulation

Color vision deficiency is a very complex topic, and I could not describe the different causes any better than Wikipedia does, so if you want to learn more, you should check out their [article about color blindness](#).

Dichromacy



Original Color

36.7821, 36.2875, 31.0522

Protanopia

34.4708, 36.3510, 32.3938

Deuteranopia

37.0225, 36.4114, 31.0634



Tritanopia

38.9321, 36.4292, 41.0560

Trichromacy



Original Color

36.7821, 36.2875, 31.0522

Protanomaly

35.1372, 36.1846, 31.9205

Deuteranomaly

37.0225, 36.4114, 31.0634

Tritanomaly

38.1426, 36.3504, 37.3538

Monochromacy



Original Color

36.7821, 36.2875, 31.0522

Achromatopsia

34.8123, 36.6253, 39.8849

Achromatomaly

35.5402, 36.5480, 36.6338

CSS Examples

Text

The CSS property to change the color of the text to XYZ 36.7821, 36.2875, 31.0522 is called "color". The color property can be set on classes, ids or directly on the HTML element.

This example shows how text in the color `rgb(184, 157, 143)` looks like.

```
.text, #text, p{  
    color:rgb(184, 157, 143)  
}
```

If you want to add a text shadow in that color use the text-shadow property, you can generate a text shadow directly with our [CSS Text Shadow Generator](#).

Here you see how black text with a 4 pixel rgb(184, 157, 143) colored shadow looks like.

```
.shadow{ text-shadow: 4px 4px 2px rgb(184, 157, 143) }
```

Border

The CSS property to change the border of an element to XYZ 36.7821, 36.2875, 31.0522 is called "border". The border property can be set on classes, ids or directly on the HTML element.

This example shows the color as border, it can be applied via the CSS property "border" or "border-color".

```
.border, #border, table{ border:4px solid rgb(184, 157, 143) }
```


If only the border color should be changed use the property `border-color`.

```
.border{ border-color:rgb(184, 157, 143) }
```

If you want to add a box shadow in that color use:

Here you see how a box with a 4 pixel `rgb(184, 157, 143)` colored shadow looks like.

```
.boxshadow{ -moz-box-shadow:4px 4px 4px  
4px rgb(184, 157, 143); -webkit-box-  
shadow:4px 4px 4px 4px rgb(184, 157, 143);  
box-shadow:4px 4px 4px 4px rgb(184, 157,  
143) }
```

Background

The CSS property to change the background color of an element to XYZ 36.7821, 36.2875, 31.0522 is called "background". The background property can be set on classes, ids or directly on the HTML element.

```
.background, #background, body{  
background: rgb(184, 157, 143) }
```

If only the background color should be changed can be used:

```
.background{ background-color: rgb(184,  
157, 143) }
```

This example shows the color as background, it is applied via the CSS property "background".

To optimize and compress your CSS code, you can use our [online CSS compressor and optimizer](#) based on csstidy. If you want to create a linear or radial gradient as background or border, check our [CSS Gradient Generator](#).

Hey! You found this booklet interesting? Support Converting Colors with the new Membership Option!

The pro membership hides all ads, plus gives you double the colors in the color bucket, and more awesome pro features!

[Learn more, Memberships starting at \\$2.50/m!](#)

**Follow me
on Twitter!**

@ConvertingColor