

Converting Colors

XYZ(36.6706, 36.1003, 29.0088)

Have a look what the booklet for
XYZ(36.6706, 36.1003, 29.0088)
contains.

XYZ(36.7256, 36.0510, 29.0676)	3
<i>Conversions</i>	4
<i>Details</i>	6
<i>Harmonies</i>	12
<i>Previews</i>	24
<i>Color Blindness Simulation</i>	28
<i>CSS Examples</i>	31

Color

**XYZ(36.7256, 36.0510,
29.0676)**

Conversions

Conversions Part 1

Format	Color
Hex	BA9C8A
RGB	186, 156, 138
RGB Percent	73%, 61%, 54%
CMY	0.2706, 0.3882, 0.4588
CMYK	0.00, 0.16, 0.26, 0.27
HSL	23°, 26%, 64%
HSV	23°, 26%, 73%
XYZ	36.7256, 36.0510, 29.0676
YIQ	162.9180, 23.6580, 0.7620

Conversions

Conversions Part 2

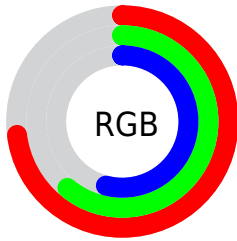
Format	Color
R_{YB}	186, 167, 138
Decimal	12229770
CIE _{Lab}	66.56, 8.32, 13.56
CIE _{LCh}	67, 15.912, 58.473
Yxy	36.0510, 0.3606, 0.3540
Android (android.graphics.Color)	4290419850 (0xFFBA9C8A)
YUV	162.9180, -12.2846, 20.2429
Hunter-Lab	60.0425, 4.1070, 13.3264

Details

The XYZ color **36.7256, 36.0510, 29.0676** is a light color, and the websafe version is hex **CC9999**. A complement of this color would be **33.3464, 36.9526, 51.8296**, and the grayscale version is **34.8232, 36.6367, 39.8973**.

A 20% lighter version of the original color is **69.4127, 68.9095, 58.9326**, and **16.3287, 15.7133, 11.4049** is the 20% darker color. If you saturate the color by 10%, you get **33.6348, 31.8429, 21.9529**, and if you desaturate by 10%, it is **40.2357, 40.7280, 37.4607**.

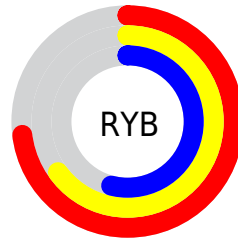
Distribution



Red (73%)

Green (61%)

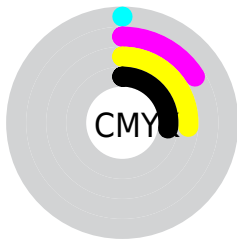
Blue (54%)



Red (73%)

Yellow (65%)

Blue (54%)

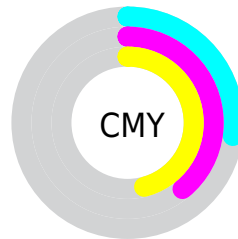


Cyan (0%)

Magenta (16%)

Yellow (26%)

Black (27%)



Cyan (27%)

Magenta (39%)

Yellow (46%)

Brightness & Saturation Gradients

These gradients show how the XYZ color 36.7256, 36.0510, 29.0676 changes by changing the brightness by 10 percent. The first figure shows a shift by +10% for each color and the second figure -10%.

Similar to the brightness gradients but the following saturation gradients show a change of the XYZ color 36.7256, 36.0510, 29.0676 by changing the saturation by 10% instead.

■ 36.7256, 36.0510,
29.0676

■ 36.7256, 36.0510,
29.0676

323.4972,
329.1834, 311.6047

■ 25.1678, 24.4736,
18.8859

■ 69.4671, 69.1108,
59.2279

■ 16.3315, 15.6853,
11.4119

■ 91.3816, 91.3619,
80.0437

■ 9.8514, 9.3017,
6.2270

■ 117.4790,
117.9398, 105.2413

■ 5.3620, 4.9385,
2.9126

148.1246,
149.2287, 135.2391

■ 2.4981, 2.2112,
1.0502

183.6839,
185.6132, 170.4559

■ 0.8943, 0.7261,
0.0000

224.5222,

■ 0.0000, 0.0000,

227.4775, 211.3100

0.0000

271.0048,
275.2061, 258.2201

■ 36.7256, 36.0510,
29.0676

■ 36.7256, 36.0510,
29.0676

■ 33.6348, 31.8429,
21.9529

■ 40.2357, 40.7280,
37.4607

■ 30.9434, 28.0836,
16.0507

■ 44.1780, 45.8834,
47.1891

■ 28.6341, 24.7588,
11.2925

■ 48.5687, 51.5325,
58.3089

■ 26.6871, 21.8513,
7.6023

■ 53.4219, 57.6884,
70.8724

■ 25.0806, 19.3428,
4.8944

■ 58.7513, 64.3638,
84.9292

■ 23.7896, 17.2133,
3.0696

■ 64.5699, 71.5709,
100.5264

■ 22.7842, 15.4397,
2.0033

■ 68.6910, 78.4417,
106.1281

■ 22.4253, 14.7901,
1.6728

■ 72.1733, 85.4062,
107.2888

■ 74.0598, 89.1791,
107.9177

Harmonies

Analogous

The Analogous color harmony consists of three colors that are next to each other on the color wheel.



38.4669, 36.0510, 33.3060



36.7256, 36.0510, 29.0676



34.3881, 36.0510, 27.5096

Triad

The Triadic color harmony groups three colors that are evenly spaced from another and form a triangle on the color wheel.



36.7256, 36.0510, 29.0676



29.8728, 36.0510, 38.9036



36.5038, 36.0510, 51.9997

Complementary

The Complementary color scheme is a pair of colors which are on the opposite of each other on the color wheel.



36.7256, 36.0510, 29.0676



33.3464, 36.9526, 51.8296

Split Complementary

Split-complementary colors differ from the complementary color scheme. The scheme consists of three colors, the original color and two neighbors of the complement color.



34.1430, 36.0510, 53.9383



36.7256, 36.0510, 29.0676



30.3815, 36.0510, 45.8697

Square

The Square scheme is like the rectangle color scheme, but the four colors are evenly spaced on the color wheel.



36.7256, 36.0510, 29.0676



30.4948, 36.0510, 32.7643



31.9176, 36.0510, 51.5777



38.3347, 36.0510, 46.5473

Rectangle

The Rectangle color scheme consists of four colors that form a rectangle on the color wheel.



36.7256, 36.0510, 29.0676



32.8295, 36.0510, 28.0445



31.9176, 36.0510, 51.5777



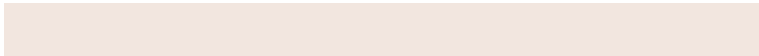
35.7426, 36.0510, 53.1100

Sweetspot

The Sweet Spot groups the original color and five complimentary colors.



36.7266, 36.0527, 29.0683



78.3411, 80.9133, 81.2090



36.4437, 31.4585, 41.3931



17.0084, 17.5009, 17.2791



90.7827, 95.5105, 104.0109



18.6292, 19.5994, 21.3438

Same Dimension

The Same Dimension uses a secret algorithm to generate beautiful new colors.



36.7266, 36.0527, 29.0683



63.2799, 60.8910, 45.0511



41.0780, 44.7556, 30.5188



9.2732, 9.5494, 9.4614



15.1538, 10.0840, 1.1477



0.5945, 0.4761, 0.0606

Inverse Universe

The Inverse Universe completely reimagines the original color for something new.



33.3464, 36.9526, 51.8296



56.1006, 62.7928, 93.3648



29.3785, 29.0168, 50.5069



8.9760, 9.6291, 11.4650



10.2565, 10.9727, 32.8304



0.4189, 0.5016, 1.1765

Previews

White Background



This preview shows how the XYZ color 36.7256, 36.0510, 29.0676 looks on a white background.

Color Contrast Check

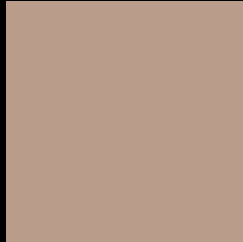
Large Text (above 18pt) WCAG AA × Fail

Any Text WCAG AA × Fail

Large Text (above 18pt) WCAG AAA × Fail

Any Text WCAG AAA × Fail

Black Background



This preview shows how the XYZ color 36.7256, 36.0510, 29.0676 looks on a black background.

Color Contrast Check

Large Text (above 18pt) WCAG AA ✓ Pass

Any Text WCAG AA ✓ Pass

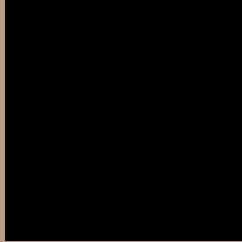
Large Text (above 18pt) WCAG AAA ✓ Pass

Any Text WCAG AAA ✓ Pass

If you want to check with other color combinations, try the [Color Contrast Checker](#).

XYZ 36.7256, 36.0510, 29.0676

Background



This preview shows how black text looks on a background with the XYZ color 36.7256, 36.0510, 29.0676.



This preview shows how white text looks on a background with the XYZ color 36.7256, 36.0510,

Color Blindness Simulation

Color vision deficiency is a very complex topic, and I could not describe the different causes any better than Wikipedia does, so if you want to learn more, you should check out their [article about color blindness](#).

Dichromacy



Original Color

36.7256, 36.0510, 29.0676

Protanopia

34.3056, 36.3098, 30.3997

Deuteranopia

36.7256, 36.0510, 29.0676



Tritanopia

38.9153, 35.9556, 40.0110

Trichromacy



Original Color

36.7256, 36.0510, 29.0676

Protanomaly

35.2089, 36.2652, 29.9551

Deuteranomaly

36.7256, 36.0510, 29.0676

Tritanomaly

38.0467, 35.8404, 35.9230

Monochromacy



Original Color

36.7256, 36.0510, 29.0676

Achromatopsia

34.8123, 36.6253, 39.8849

Achromatomaly

35.1981, 36.1326, 35.6910

CSS Examples

Text

The CSS property to change the color of the text to XYZ 36.7256, 36.0510, 29.0676 is called "color". The color property can be set on classes, ids or directly on the HTML element.

This example shows how text in the color `rgb(186, 156, 138)` looks like.

```
.text, #text, p{  
    color:rgb(186, 156, 138)  
}
```

If you want to add a text shadow in that color use the text-shadow property, you can generate a text shadow directly with our [CSS Text Shadow Generator](#).

Here you see how black text with a 4 pixel rgb(186, 156, 138) colored shadow looks like.

```
.shadow{ text-shadow: 4px 4px 2px rgb(186, 156, 138) }
```

Border

The CSS property to change the border of an element to XYZ 36.7256, 36.0510, 29.0676 is called "border". The border property can be set on classes, ids or directly on the HTML element.

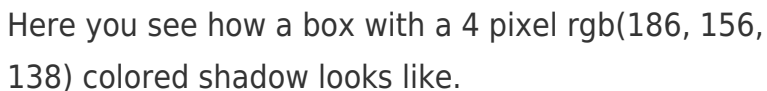
This example shows the color as border, it can be applied via the CSS property "border" or "border-color".

```
.border, #border, table{ border:4px solid rgb(186, 156, 138) }
```


If only the border color should be changed use the property `border-color`.

```
.border{ border-color:rgb(186, 156, 138) }
```

If you want to add a box shadow in that color use:



Here you see how a box with a 4 pixel `rgb(186, 156, 138)` colored shadow looks like.

```
.boxshadow{ -moz-box-shadow:4px 4px 4px 4px rgb(186, 156, 138); -webkit-box-shadow:4px 4px 4px 4px rgb(186, 156, 138); box-shadow:4px 4px 4px 4px rgb(186, 156, 138) }
```

Background

The CSS property to change the background color of an element to XYZ 36.7256, 36.0510, 29.0676 is called "background". The background property can be set on classes, ids or directly on the HTML element.

```
.background, #background, body{  
background: rgb(186, 156, 138) }
```

If only the background color should be changed can be used:

```
.background{ background-color: rgb(186,  
156, 138) }
```

This example shows the color as background, it is applied via the CSS property "background".

To optimize and compress your CSS code, you can use our [online CSS compressor and optimizer](#) based on csstidy. If you want to create a linear or radial gradient as background or border, check our [CSS Gradient Generator](#).

Hey! You found this booklet interesting? Support Converting Colors with the new Membership Option!

The pro membership hides all ads, plus gives you double the colors in the color bucket, and more awesome pro features!

[Learn more, Memberships starting at \\$2.50/m!](#)

**Follow me
on Twitter!**

@ConvertingColor