

Converting Colors

XYZ(36.7974, 36.4460, 39.7761)

Have a look what the booklet for
XYZ(36.7974, 36.4460, 39.7761)
contains.

XYZ(36.7422, 36.3282, 39.7258)	3
<i>Conversions</i>	4
<i>Details</i>	6
<i>Harmonies</i>	12
<i>Previews</i>	24
<i>Color Blindness Simulation</i>	28
<i>CSS Examples</i>	31

Color

**XYZ(36.7422, 36.3282,
39.7258)**

Conversions

Conversions Part 1

Format	Color
Hex	B09EA3
RGB	176, 158, 163
RGB Percent	69%, 62%, 64%
CMY	0.3098, 0.3804, 0.3608
CMYK	0.00, 0.10, 0.07, 0.31
HSL	343°, 10%, 65%
HSV	343°, 10%, 69%
XYZ	36.7422, 36.3282, 39.7258
YIQ	163.9520, 9.1230, 5.3710

Conversions

Conversions Part 2

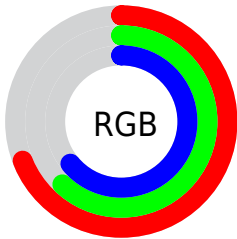
Format	Color
RYB	176, 158, 163
Decimal	11574947
CIELab	66.77, 7.47, -0.20
CIELCh	67, 7.469, 358.428
Yxy	36.3282, 0.3257, 0.3221
Android (android.graphics.Color)	4289765027 (0xFFB09EA3)
YUV	163.9520, -0.4693, 10.5661
Hunter-Lab	60.2729, 3.3356, 3.1130

Details

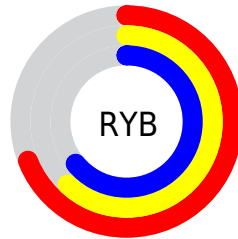
The XYZ color **36.7422, 36.3282, 39.7258** is a light color, and the websafe version is hex **999999**. A complement of this color would be **36.9780, 41.2609, 44.5454**, and the grayscale version is **35.2638, 37.1002, 40.4021**.

A 20% lighter version of the original color is **69.7279, 69.8063, 76.1286**, and **16.2953, 15.8740, 17.2441** is the 20% darker color. If you saturate the color by 10%, you get **32.8702, 30.3160, 33.0948**, and if you desaturate by 10%, it is **41.1608, 43.2493, 47.1049**.

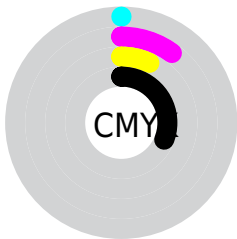
Distribution



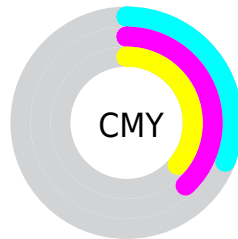
- Red (69%)
- Green (62%)
- Blue (64%)



- Red (69%)
- Yellow (62%)
- Blue (64%)



- Cyan (0%)
- Magenta (10%)
- Yellow (7%)
- Black (31%)



- Cyan (31%)
- Magenta (38%)
- Yellow (36%)

Brightness & Saturation Gradients

These gradients show how the XYZ color 36.7422, 36.3282, 39.7258 changes by changing the brightness by 10 percent. The first figure shows a shift by +10% for each color and the second figure -10%.

Similar to the brightness gradients but the following saturation gradients show a change of the XYZ color 36.7422, 36.3282, 39.7258 by changing the saturation by 10% instead.

■ 36.7422, 36.3282,
39.7258

■ 36.7422, 36.3282,
39.7258

323.5680,
330.3928, 360.4842

■ 25.1807, 24.6878,
27.0127

■ 69.4925, 69.5383,
75.9783

■ 16.3412, 15.8446,
17.3502

■ 91.4121, 91.8768,
100.3548

■ 9.8583, 9.4142,
10.3199

117.5150,
118.5502, 129.4560

■ 5.3666, 5.0124,
5.5032

148.1667,
149.9427, 163.7007

■ 2.5009, 2.2545,
2.4816

183.7325,
186.4388, 203.5073

■ 0.8957, 0.7495,
0.8304

224.5777,

■ 0.0000, 0.0000,

228.4229, 249.2944

0.0000

271.0678,
276.2795, 301.4805

■ 36.7422, 36.3282,
39.7258

■ 36.7422, 36.3282,
39.7258

■ 32.8702, 30.3160,
33.0948

■ 41.1608, 43.2493,
47.1049

■ 29.5200, 25.1703,
27.1858

■ 46.1432, 51.1100,
55.2524

■ 26.6698, 20.8521,
21.9746

■ 51.7097, 59.9454,
64.1909

■ 24.2948, 17.3179,
17.4344

■ 57.8786, 69.7876,
73.9411

■ 22.3680, 14.5202,
13.5371

■ 64.6675, 80.6669,
84.5231

■ 20.8596, 12.4059,
10.2521

■ 69.2864, 86.9989,
95.0206

■ 19.7362, 10.9152,
7.5464

■ 71.2346, 87.7782,
105.2801

■ 18.9585, 9.9775,
5.3830

■ 71.7147, 87.9702,
107.8079

■ 18.4562, 9.4508,
3.7423

Harmonies

Analogous

The Analogous color harmony consists of three colors that are next to each other on the color wheel.



36.4095, 36.3282, 42.8966



36.7422, 36.3282, 39.7258



36.4712, 36.3282, 36.6718

Triad

The Triadic color harmony groups three colors that are evenly spaced from another and form a triangle on the color wheel.



36.7422, 36.3282, 39.7258



33.5068, 36.3282, 34.3413



33.4059, 36.3282, 45.0858

Complementary

The Complementary color scheme is a pair of colors which are on the opposite of each other on the color wheel.



36.7422, 36.3282, 39.7258



36.9780, 41.2609, 44.5454

Split Complementary

Split-complementary colors differ from the complementary color scheme. The scheme consists of three colors, the original color and two neighbors of the complement color.



32.6568, 36.3282, 42.5860



36.7422, 36.3282, 39.7258



32.7141, 36.3282, 36.3920

Square

The Square scheme is like the rectangle color scheme, but the four colors are evenly spaced on the color wheel.



36.7422, 36.3282, 39.7258



34.5884, 36.3282, 33.6663



32.4062, 36.3282, 39.3852



34.4694, 36.3282, 46.0937

Rectangle

The Rectangle color scheme consists of four colors that form a rectangle on the color wheel.



36.7422, 36.3282, 39.7258



35.9878, 36.3282, 35.0886



32.4062, 36.3282, 39.3852



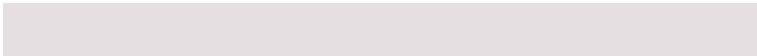
33.1099, 36.3282, 44.3857

Sweetspot

The Sweet Spot groups the original color and five complimentary colors.



36.7432, 36.3298, 39.7266



72.2839, 74.7207, 81.5088



36.8374, 36.2367, 46.1275



15.5238, 15.9716, 17.4293



84.5950, 89.0005, 96.9216



16.2198, 17.0645, 18.5832

Same Dimension

The Same Dimension uses a secret algorithm to generate beautiful new colors.



36.7432, 36.3298, 39.7266



65.1679, 63.5962, 69.5565



36.9800, 37.5057, 37.6400



8.5901, 8.5428, 9.3400



13.5634, 6.9429, 2.8610



0.4521, 0.2286, 0.2236

Inverse Universe

The Inverse Universe completely reimagines the original color for something new.



36.7432, 36.3298, 39.7266



65.1679, 63.5962, 69.5565



36.7098, 39.9479, 46.8506



8.5901, 8.5428, 9.3400



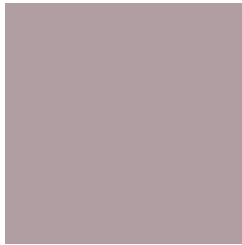
13.5634, 6.9429, 2.8610



0.4521, 0.2286, 0.2236

Previews

White Background



This preview shows how the XYZ color 36.7422, 36.3282, 39.7258 looks on a white background.

Color Contrast Check

Large Text (above 18pt) WCAG AA × Fail

Any Text WCAG AA × Fail

Large Text (above 18pt) WCAG AAA × Fail

Any Text WCAG AAA × Fail

Black Background



This preview shows how the XYZ color 36.7422, 36.3282, 39.7258 looks on a black background.

Color Contrast Check

Large Text (above 18pt) WCAG AA ✓ Pass

Any Text WCAG AA ✓ Pass

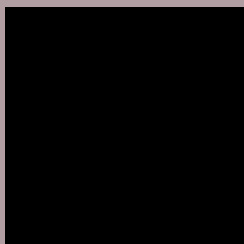
Large Text (above 18pt) WCAG AAA ✓ Pass

Any Text WCAG AAA ✓ Pass

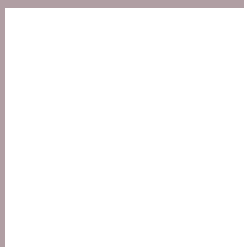
If you want to check with other color combinations, try the [Color Contrast Checker](#).

XYZ 36.7422, 36.3282, 39.7258

Background



This preview shows how black text looks on a background with the XYZ color 36.7422, 36.3282, 39.7258.



This preview shows how white text looks on a background with the XYZ color 36.7422, 36.3282,

Color Blindness Simulation

Color vision deficiency is a very complex topic, and I could not describe the different causes any better than Wikipedia does, so if you want to learn more, you should check out their [article about color blindness](#).

Dichromacy



Original Color

36.7422, 36.3282, 39.7258

Protanopia

35.2289, 36.5566, 40.7967

Deuteranopia

37.0279, 36.2233, 39.6905



Tritanopia

37.3499, 36.3256, 42.5791

Trichromacy



Original Color

36.7422, 36.3282, 39.7258

Protanomaly

35.8079, 36.6051, 40.3002

Deuteranomaly

36.7993, 36.1054, 39.6798

Tritanomaly

37.1635, 36.2511, 41.5976

Monochromacy



Original Color

36.7422, 36.3282, 39.7258

Achromatopsia

35.2861, 37.1238, 40.4278

Achromatomaly

35.7696, 36.8458, 40.3487

CSS Examples

Text

The CSS property to change the color of the text to XYZ 36.7422, 36.3282, 39.7258 is called "color". The color property can be set on classes, ids or directly on the HTML element.

This example shows how text in the color rgb(176, 158, 163) looks like.

```
.text, #text, p{  
    color:rgb(176, 158, 163)  
}
```

If you want to add a text shadow in that color use the text-shadow property, you can generate a text shadow directly with our [CSS Text Shadow Generator](#).

Here you see how black text with a 4 pixel rgb(176, 158, 163) colored shadow looks like.

```
.shadow{ text-shadow: 4px 4px 2px rgb(176, 158, 163) }
```

Border

The CSS property to change the border of an element to XYZ 36.7422, 36.3282, 39.7258 is called "border". The border property can be set on classes, ids or directly on the HTML element.

This example shows the color as border, it can be applied via the CSS property "border" or "border-color".

```
.border, #border, table{ border:4px solid rgb(176, 158, 163) }
```


If only the border color should be changed use the property border-color.

```
.border{ border-color:rgb(176, 158, 163) }
```

If you want to add a box shadow in that color use:

Here you see how a box with a 4 pixel rgb(176, 158, 163) colored shadow looks like.

```
.boxshadow{ -moz-box-shadow:4px 4px 4px  
4px rgb(176, 158, 163); -webkit-box-  
shadow:4px 4px 4px 4px rgb(176, 158, 163);  
box-shadow:4px 4px 4px 4px rgb(176, 158,  
163) }
```

Background

The CSS property to change the background color of an element to XYZ 36.7422, 36.3282, 39.7258 is called "background". The background property can be set on classes, ids or directly on the HTML element.

```
.background, #background, body{  
background: rgb(176, 158, 163) }
```

If only the background color should be changed can be used:

```
.background{ background-color: rgb(176,  
158, 163) }
```

This example shows the color as background, it is applied via the CSS property "background".

To optimize and compress your CSS code, you can use our [online CSS compressor and optimizer](#) based on csstidy. If you want to create a linear or radial gradient as background or border, check our [CSS Gradient Generator](#).

Hey! You found this booklet interesting? Support Converting Colors with the new Membership Option!

The pro membership hides all ads, plus gives you double the colors in the color bucket, and more awesome pro features!

[Learn more, Memberships starting at \\$2.50/m!](#)

**Follow me
on Twitter!**

@ConvertingColor