

Converting Colors

XYZ(36.8056, 32.8017, 30.0474)

Have a look what the booklet for
XYZ(36.8056, 32.8017, 30.0474)
contains.

| | |
|--|----|
| XYZ(36.8036, 32.7683, 29.9763) | 3 |
| <i>Conversions</i> | 4 |
| <i>Details</i> | 6 |
| <i>Harmonies</i> | 12 |
| <i>Previews</i> | 24 |
| <i>Color Blindness Simulation</i> | 28 |
| <i>CSS Examples</i> | 31 |

Color

**XYZ(36.8036, 32.7683,
29.9763)**

Conversions

Conversions Part 1

| Format | Color |
|---------------|----------------------------|
| Hex | C28E8E |
| RGB | 194, 142, 142 |
| RGB Percent | 76%, 56%, 56% |
| CMY | 0.2392, 0.4431, 0.4431 |
| CMYK | 0.00, 0.27, 0.27, 0.24 |
| HSL | 0°, 30%, 66% |
| HSV | 0°, 27%, 76% |
| XYZ | 36.8036, 32.7683, 29.9763 |
| YIQ | 157.5480, 30.9920, 11.0240 |

Conversions

Conversions Part 2

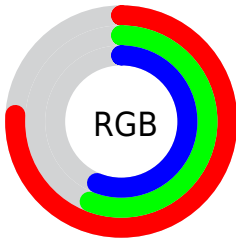
| Format | Color |
|-------------------------------------|--|
| RYB | 194, 142, 142 |
| Decimal | 12750478 |
| CIELab | 63.97, 19.72, 7.78 |
| CIElCh | 64, 21.203, 21.517 |
| Yxy | 32.7683, 0.3697, 0.3292 |
| Android (android.graphics.Color) | 4290940558 (0xFFC28E8E) |
| YUV | 157.5480, -7.6652, 31.9684 |
| Hunter-Lab | 57.2436, 14.5866, 9.0226 |

Details

The XYZ color **36.8036, 32.7683, 29.9763** is a light color, and the websafe version is hex **CC9999**. A complement of this color would be **40.1841, 48.2279, 58.2301**, and the grayscale version is **32.3193, 34.0024, 37.0286**.

A 20% lighter version of the original color is **69.4874, 63.9746, 60.9105**, and **16.3203, 13.7438, 11.9179** is the 20% darker color. If you saturate the color by 10%, you get **32.8326, 26.9579, 22.0811**, and if you desaturate by 10%, it is **41.5321, 39.6877, 39.3754**.

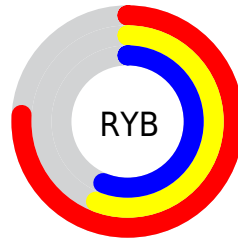
Distribution



Red (76%)

Green (56%)

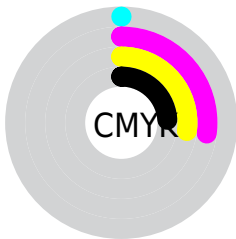
Blue (56%)



Red (76%)

Yellow (56%)

Blue (56%)

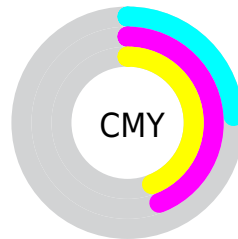


Cyan (0%)

Magenta (27%)

Yellow (27%)

Black (24%)



Cyan (24%)


Magenta (44%)


Yellow (44%)

Brightness & Saturation Gradients

These gradients show how the XYZ color 36.8036, 32.7683, 29.9763 changes by changing the brightness by 10 percent. The first figure shows a shift by +10% for each color and the second figure -10%.


Similar to the brightness gradients but the following saturation gradients show a change of the XYZ color 36.8036, 32.7683, 29.9763 by changing the saturation by 10% instead.


 36.8036, 32.7683,
29.9763


 36.8036, 32.7683,
29.9763


323.8298,
314.6044, 315.9978


 25.2284, 21.9490,
19.5687

 69.5864, 64.0136,
60.6853

 16.3770, 13.8194,
11.9010


 91.5248, 85.2084,
81.8237

 9.8838, 7.9952,
6.5546


 117.6483,
110.6305, 107.3762

 5.3837, 4.0919,
3.1109

148.3222,
140.6644, 137.7612

 2.5111, 1.7251,
1.1516

183.9120,
175.6942, 173.3973

 0.9009, 0.4398,
0.0000

224.7829,

 0.0000, 0.0000,

216.1046, 214.7031

0.0000

271.3004,
262.2799, 262.0971

■ 36.8036, 32.7683,
29.9763

■ 36.8036, 32.7683,
29.9763

■ 32.8326, 26.9579,
22.0811

■ 41.5321, 39.6877,
39.3754

■ 29.5774, 22.1945,
15.6100

■ 47.0519, 47.7647,
50.3487

■ 26.9962, 18.4174,
10.4787

■ 53.3978, 57.0504,
62.9643

■ 25.0417, 15.5574,
6.5935

■ 60.6018, 67.5918,
77.2859

■ 23.6607, 13.5365,
3.8485

■ 68.6942, 79.4331,
93.3738

■ 22.7911, 12.2640,
2.1200

■ 76.0582, 90.2094,
108.0112

■ 22.3496, 11.6179,
1.2426

■ 22.2484, 11.4697,
1.0413

Harmonies

Analogous

The Analogous color harmony consists of three colors that are next to each other on the color wheel.



37.1823, 32.7683, 38.1625



36.8036, 32.7683, 29.9763



34.8602, 32.7683, 24.2836

Triad

The Triadic color harmony groups three colors that are evenly spaced from another and form a triangle on the color wheel.



36.8036, 32.7683, 29.9763



26.8596, 32.7683, 26.3857



30.3052, 32.7683, 54.5596

Complementary

The Complementary color scheme is a pair of colors which are on the opposite of each other on the color wheel.



36.8036, 32.7683, 29.9763



40.1841, 48.2279, 58.2301

Split Complementary

Split-complementary colors differ from the complementary color scheme. The scheme consists of three colors, the original color and two neighbors of the complement color.



27.7041, 32.7683, 50.1764



36.8036, 32.7683, 29.9763



25.7999, 32.7683, 33.3058

Square

The Square scheme is like the rectangle color scheme, but the four colors are evenly spaced on the color wheel.



36.8036, 32.7683, 29.9763



29.0846, 32.7683, 22.4530



26.0988, 32.7683, 42.0629



33.3011, 32.7683, 53.2861

Rectangle

The Rectangle color scheme consists of four colors that form a rectangle on the color wheel.



36.8036, 32.7683, 29.9763



33.0030, 32.7683, 22.2348



26.0988, 32.7683, 42.0629



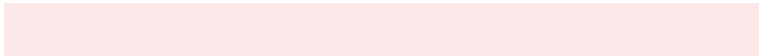
29.3586, 32.7683, 53.6765

Sweetspot

The Sweet Spot groups the original color and five complimentary colors.



36.8045, 32.7698, 29.9770



83.8382, 84.4774, 88.4202



41.6590, 34.7107, 55.5433



18.0096, 17.9873, 18.6670



0.0000, 0.0000, 0.0000



20.3446, 21.4041, 23.3091

Same Dimension

The Same Dimension uses a secret algorithm to generate beautiful new colors.



36.8045, 32.7698, 29.9770



62.4126, 53.1257, 45.8265



41.1335, 41.4279, 31.4200



10.0733, 10.0780, 10.4762



14.6276, 7.5410, 0.6846



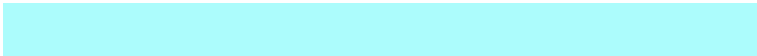
0.6320, 0.3259, 0.0296

Inverse Universe

The Inverse Universe completely reimagines the original color for something new.



40.1841, 48.2279, 58.2301



69.5321, 85.6898, 105.3448



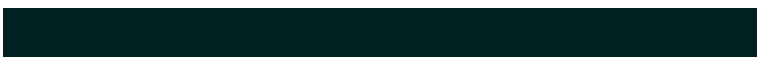
34.8959, 37.6514, 56.4674



10.3685, 11.4283, 12.9442



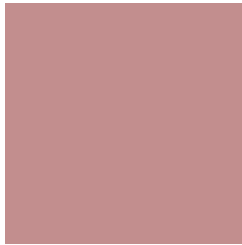
19.0839, 27.9243, 37.9407



0.8246, 1.2066, 1.6393

Previews

White Background



This preview shows how the XYZ color 36.8036, 32.7683, 29.9763 looks on a white background.

Color Contrast Check

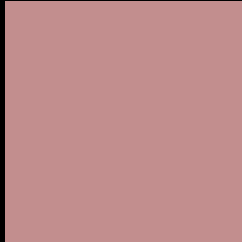
Large Text (above 18pt) WCAG AA × Fail

Any Text WCAG AA × Fail

Large Text (above 18pt) WCAG AAA × Fail

Any Text WCAG AAA × Fail

Black Background



This preview shows how the XYZ color 36.8036, 32.7683, 29.9763 looks on a black background.

Color Contrast Check

Large Text (above 18pt) WCAG AA ✓ Pass

Any Text WCAG AA ✓ Pass

Large Text (above 18pt) WCAG AAA ✓ Pass

Any Text WCAG AAA ✓ Pass

If you want to check with other color combinations, try the [Color Contrast Checker](#).

XYZ 36.8036, 32.7683, 29.9763

Background



This preview shows how black text looks on a background with the XYZ color 36.8036, 32.7683, 29.9763.



This preview shows how white text looks on a background with the XYZ color 36.8036, 32.7683, 29.9763.

29.9763.

Color Blindness Simulation

Color vision deficiency is a very complex topic, and I could not describe the different causes any better than Wikipedia does, so if you want to learn more, you should check out their [article about color blindness](#).

Dichromacy



Original Color

36.8036, 32.7683, 29.9763

Protanopia

31.6434, 33.0862, 33.1523

Deuteranopia

33.6186, 32.9659, 29.7905



Tritanopia

37.6165, 32.8862, 33.6432

Trichromacy



Original Color

36.8036, 32.7683, 29.9763

Protanomaly

33.1079, 32.6587, 31.7529

Deuteranomaly

34.7699, 32.8578, 29.7089

Tritanomaly

37.3758, 32.7900, 32.3761

Monochromacy



Original Color

36.8036, 32.7683, 29.9763

Achromatopsia

32.4990, 34.1914, 37.2345

Achromatomaly

33.6903, 33.3814, 34.3733

CSS Examples

Text

The CSS property to change the color of the text to XYZ 36.8036, 32.7683, 29.9763 is called "color". The color property can be set on classes, ids or directly on the HTML element.

This example shows how text in the color `rgb(194, 142, 142)` looks like.

```
.text, #text, p{  
    color:rgb(194, 142, 142)  
}
```

If you want to add a text shadow in that color use the text-shadow property, you can generate a text shadow directly with our [CSS Text Shadow Generator](#).

Here you see how black text with a 4 pixel rgb(194, 142, 142) colored shadow looks like.

```
.shadow{ text-shadow: 4px 4px 2px rgb(194, 142, 142) }
```

Border

The CSS property to change the border of an element to XYZ 36.8036, 32.7683, 29.9763 is called "border". The border property can be set on classes, ids or directly on the HTML element.

This example shows the color as border, it can be applied via the CSS property "border" or "border-color".

```
.border, #border, table{ border:4px solid rgb(194, 142, 142) }
```


If only the border color should be changed use the property `border-color`.

```
.border{ border-color:rgb(194, 142, 142) }
```

If you want to add a box shadow in that color use:

Here you see how a box with a 4 pixel `rgb(194, 142, 142)` colored shadow looks like.

```
.boxshadow{ -moz-box-shadow:4px 4px 4px  
4px rgb(194, 142, 142); -webkit-box-  
shadow:4px 4px 4px 4px rgb(194, 142, 142);  
box-shadow:4px 4px 4px 4px rgb(194, 142,  
142) }
```

Background

The CSS property to change the background color of an element to XYZ 36.8036, 32.7683, 29.9763 is called "background". The background property can be set on classes, ids or directly on the HTML element.

```
.background, #background, body{  
background: rgb(194, 142, 142) }
```

If only the background color should be changed can be used:

```
.background{ background-color: rgb(194,  
142, 142) }
```

This example shows the color as background, it is applied via the CSS property "background".

To optimize and compress your CSS code, you can use our [online CSS compressor and optimizer](#) based on csstidy. If you want to create a linear or radial gradient as background or border, check our [CSS Gradient Generator](#).

Hey! You found this booklet interesting? Support Converting Colors with the new Membership Option!

The pro membership hides all ads, plus gives you double the colors in the color bucket, and more awesome pro features!

[Learn more, Memberships starting at \\$2.50/m!](#)

**Follow me
on Twitter!**

@ConvertingColor