

# Converting Colors

XYZ(36.8064, 32.5930, 28.0164)

Have a look what the booklet for  
XYZ(36.8064, 32.5930, 28.0164)  
contains.

<b>XYZ(36.8052, 32.5917, 28.0179)</b> .....	3
<i><b>Conversions</b></i> .....	4
<i><b>Details</b></i> .....	6
<i><b>Harmonies</b></i> .....	12
<i><b>Previews</b></i> .....	24
<i><b>Color Blindness Simulation</b></i> .....	28
<i><b>CSS Examples</b></i> .....	31

# Color

**XYZ(36.8052, 32.5917,  
28.0179)**

# Conversions

## Conversions Part 1

Format	Color
Hex	C48D89
RGB	196, 141, 137
RGB Percent	77%, 55%, 54%
CMY	0.2314, 0.4470, 0.4627
CMYK	0.00, 0.28, 0.30, 0.23
HSL	4°, 33%, 65%
HSV	4°, 30%, 77%
XYZ	36.8052, 32.5917, 28.0179
YIQ	156.9890, 34.0640, 10.4160

# Conversions

## Conversions Part 2

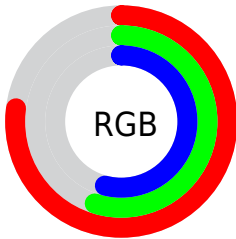
Format	Color
R <sub>Y</sub> B	196, 141, 137
Decimal	12881289
CIE Lab	63.83, 20.35, 10.43
CIE LCh	64, 22.866, 27.127
Yxy	32.5917, 0.3778, 0.3346
Android (android.graphics.Color)	4291071369 (0xFFC48D89)
YUV	156.9890, -9.8546, 34.2126
Hunter-Lab	57.0891, 15.1724, 10.8644

# Details

The XYZ color **36.8052, 32.5917, 28.0179** is a light color, and the websafe version is hex **CC9999**. A complement of this color would be **39.1293, 47.0015, 59.2345**, and the grayscale version is **32.0758, 33.7463, 36.7497**.

A 20% lighter version of the original color is **69.6824, 63.8187, 57.3608**, and **16.3610, 13.6632, 10.7918** is the 20% darker color. If you saturate the color by 10%, you get **33.0497, 27.1299, 20.4482**, and if you desaturate by 10%, it is **41.2623, 39.0475, 37.0822**.

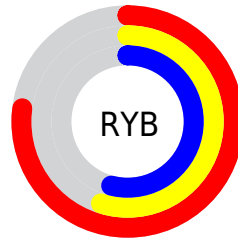
# Distribution



Red (77%)

Green (55%)

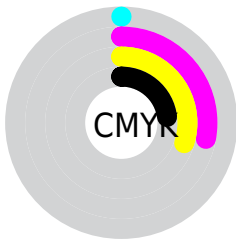
Blue (54%)



Red (77%)

Yellow (55%)

Blue (54%)

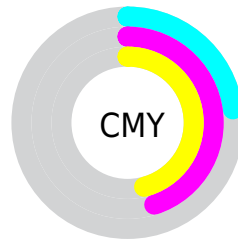


Cyan (0%)

Magenta (28%)

Yellow (30%)

Black (23%)



Cyan (23%)

Magenta (45%)


Yellow (46%)


# Brightness & Saturation Gradients

These gradients show how the XYZ color 36.8052, 32.5917, 28.0179 changes by changing the brightness by 10 percent. The first figure shows a shift by +10% for each color and the second figure -10%.


Similar to the brightness gradients but the following saturation gradients show a change of the XYZ color 36.8052, 32.5917, 28.0179 by changing the saturation by 10% instead.





 36.8052, 32.5917,  
28.0179

 36.8052, 32.5917,  
28.0179


323.8366,  
313.8059, 306.4671


 25.2297, 21.8138,  
18.1000


 69.5889, 63.7375,  
57.5365

 16.3779, 13.7202,  
10.8516


 91.5277, 84.8743,  
77.9742

 9.8845, 7.9263,  
5.8542


 117.6517,  
110.2329, 102.7556

 5.3841, 4.0478,  
2.6893

148.3262,  
140.1976, 132.2993

 2.5114, 1.7004,  
0.9380

183.9166,  
175.1528, 167.0237

 0.9010, 0.4239,  
0.0000

224.7883,

 0.0000, 0.0000,

215.4830, 207.3475

0.0000

271.3064,  
261.5726, 253.6891

■ 36.8052, 32.5917,  
28.0179

■ 36.8052, 32.5917,  
28.0179

■ 33.0497, 27.1299,  
20.4482

■ 41.2623, 39.0475,  
37.0822

■ 29.9575, 22.6085,  
14.2910

■ 46.4514, 46.5383,  
47.7132

■ 27.4908, 18.9756,  
9.4593

■ 52.4043, 55.1085,  
59.9810

■ 25.6067, 16.1727,  
5.8556

■ 59.1503, 64.7986,  
73.9504

■ 24.2572, 14.1342,  
3.3692

■ 66.7170, 75.6469,  
89.6831

■ 23.3861, 12.7845,  
1.8693

■ 75.1307, 87.6899,  
107.2375

■ 22.9128, 12.0314,  
1.1147

■ 76.5750, 90.4758,  
108.0354

# Harmonies

## Analogous

The Analogous color harmony consists of three colors that are next to each other on the color wheel.



37.5637, 32.5917, 36.3808



36.8052, 32.5917, 28.0179



34.4518, 32.5917, 22.6086

# Triad

The Triadic color harmony groups three colors that are evenly spaced from another and form a triangle on the color wheel.



36.8052, 32.5917, 28.0179



26.0748, 32.5917, 26.7266



30.6689, 32.5917, 56.2441

# Complementary

The Complementary color scheme is a pair of colors which are on the opposite of each other on the color wheel.



36.8052, 32.5917, 28.0179



39.1293, 47.0015, 59.2345

# Split Complementary

Split-complementary colors differ from the complementary color scheme. The scheme consists of three colors, the original color and two neighbors of the complement color.



27.7449, 32.5917, 52.5103



36.8052, 32.5917, 28.0179



25.2099, 32.5917, 34.6076

# Square

The Square scheme is like the rectangle color scheme, but the four colors are evenly spaced on the color wheel.



36.8052, 32.5917, 28.0179



28.2460, 32.5917, 21.9586



25.7998, 32.5917, 44.1775



33.8795, 32.5917, 53.6699



# Rectangle

The Rectangle color scheme consists of four colors that form a rectangle on the color wheel.



36.8052, 32.5917, 28.0179



32.3738, 32.5917, 20.8866



25.7998, 32.5917, 44.1775



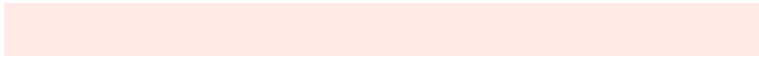
29.6218, 32.5917, 55.6720

# Sweetspot

The Sweet Spot groups the original color and five complimentary colors.



36.8061, 32.5932, 28.0186



85.1238, 85.7115, 88.4386



41.2327, 33.4362, 54.1887



17.9001, 17.8846, 18.2720



0.0000, 0.0000, 0.0000



20.3446, 21.4041, 23.3091



# Same Dimension

The Same Dimension uses a secret algorithm to generate beautiful new colors.



36.8061, 32.5932, 28.0186



62.1369, 52.4478, 41.5928



41.7366, 42.4544, 29.6621



10.1269, 10.1852, 10.4941



14.7461, 7.7779, 0.7241



0.6564, 0.3747, 0.0377



# Inverse Universe

The Inverse Universe completely reimagines the original color for something new.



39.1293, 47.0015, 59.2345



66.9998, 82.6368, 107.0270



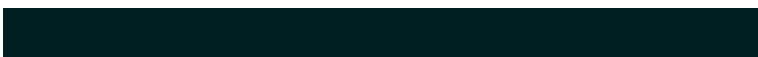
33.3010, 35.3450, 57.2918



10.3081, 11.3076, 12.9241



17.2682, 24.2930, 37.3355

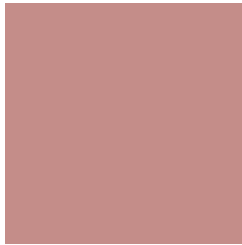


0.7640, 1.0854, 1.6191



# Previews

## White Background



This preview shows how the XYZ color 36.8052, 32.5917, 28.0179 looks on a white background.

## Color Contrast Check

Large Text (above 18pt) WCAG AA × Fail

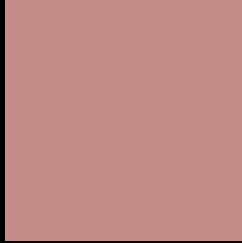
Any Text WCAG AA × Fail

Large Text (above 18pt) WCAG AAA × Fail

Any Text WCAG AAA × Fail



# Black Background



This preview shows how the XYZ color 36.8052, 32.5917, 28.0179 looks on a black background.

## Color Contrast Check

Large Text (above 18pt) WCAG AA ✓ Pass

Any Text WCAG AA ✓ Pass

Large Text (above 18pt) WCAG AAA ✓ Pass

Any Text WCAG AAA ✓ Pass

If you want to check with other color combinations, try the [Color Contrast Checker](#).

**XYZ 36.8052, 32.5917, 28.0179**

## **Background**



This preview shows how black text looks on a background with the XYZ color 36.8052, 32.5917, 28.0179.



This preview shows how white text looks on a background with the XYZ color 36.8052, 32.5917,



# Color Blindness Simulation

Color vision deficiency is a very complex topic, and I could not describe the different causes any better than Wikipedia does, so if you want to learn more, you should check out their [article about color blindness](#).

## Dichromacy



### Original Color

36.8052, 32.5917, 28.0179

### Protanopia

31.0868, 32.5984, 31.0392

### Deuteranopia

33.2521, 32.5913, 27.4598



## Tritanopia

37.7636, 32.5376, 33.1442

# Trichromacy



## Original Color

36.8052, 32.5917, 28.0179

## Protanomaly

32.7887, 32.3022, 29.7061

## Deuteranomaly

34.4900, 32.5257, 27.7528

## Tritanomaly

37.5149, 32.6708, 31.1169

# Monochromacy



## Original Color

36.8052, 32.5917, 28.0179

## Achromatopsia

32.0474, 33.7164, 36.7171

## Achromatomaly

33.3662, 32.9932, 33.4639

# CSS Examples

## Text

The CSS property to change the color of the text to XYZ 36.8052, 32.5917, 28.0179 is called "color". The color property can be set on classes, ids or directly on the HTML element.

This example shows how text in the color `rgb(196, 141, 137)` looks like.

```
.text, #text, p{  
    color:rgb(196, 141, 137)  
}
```

If you want to add a text shadow in that color use the text-shadow property, you can generate a text shadow directly with our [CSS Text Shadow Generator](#).

Here you see how black text with a 4 pixel rgb(196, 141, 137) colored shadow looks like.

```
.shadow{ text-shadow: 4px 4px 2px rgb(196, 141, 137) }
```

## Border

The CSS property to change the border of an element to XYZ 36.8052, 32.5917, 28.0179 is called "border". The border property can be set on classes, ids or directly on the HTML element.

This example shows the color as border, it can be applied via the CSS property "border" or "border-color".

```
.border, #border, table{ border:4px solid rgb(196, 141, 137) }
```



If only the border color should be changed use the property `border-color`.

```
.border{ border-color:rgb(196, 141, 137) }
```

If you want to add a box shadow in that color use:

Here you see how a box with a 4 pixel `rgb(196, 141, 137)` colored shadow looks like.

```
.boxshadow{ -moz-box-shadow:4px 4px 4px 4px rgb(196, 141, 137); -webkit-box-shadow:4px 4px 4px 4px rgb(196, 141, 137); box-shadow:4px 4px 4px 4px rgb(196, 141, 137) }
```

# Background

The CSS property to change the background color of an element to XYZ 36.8052, 32.5917, 28.0179 is called "background". The background property can be set on classes, ids or directly on the HTML element.

```
.background, #background, body{  
background: rgb(196, 141, 137) }
```

If only the background color should be changed can be used:

```
.background{ background-color: rgb(196,  
141, 137) }
```

This example shows the color as background, it is applied via the CSS property "background".

To optimize and compress your CSS code, you can use our [online CSS compressor and optimizer](#) based on csstidy. If you want to create a linear or radial gradient as background or border, check our [CSS Gradient Generator](#).

Hey! You found this booklet interesting? Support Converting Colors with the new Membership Option!

The pro membership hides all ads, plus gives you double the colors in the color bucket, and more awesome pro features!

**[Learn more, Memberships starting at \\$2.50/m!](#)**

**Follow me  
on Twitter!**

@ConvertingColor