

Converting Colors

XYZ(36.8765, 36.5971, 30.7115)

Have a look what the booklet for
XYZ(36.8765, 36.5971, 30.7115)
contains.

XYZ(36.8765, 36.5971, 30.7115)	3
<i>Conversions</i>	4
<i>Details</i>	6
<i>Harmonies</i>	12
<i>Previews</i>	24
<i>Color Blindness Simulation</i>	28
<i>CSS Examples</i>	31

Color

**XYZ(36.8765, 36.5971,
30.7115)**

Conversions

Conversions Part 1

Format	Color
Hex	B89E8E
RGB	184, 158, 142
RGB Percent	72%, 62%, 56%
CMY	0.2784, 0.3804, 0.4431
CMYK	0.00, 0.14, 0.23, 0.28
HSL	23°, 23%, 64%
HSV	23°, 23%, 72%
XYZ	36.8765, 36.5971, 30.7115
YIQ	163.9500, 20.6320, 0.5360

Conversions

Conversions Part 2

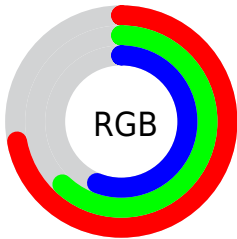
Format	Color
R_{YB}	184, 168, 142
Decimal	12099214
CIE _{Lab}	66.97, 7.03, 11.90
CIE _{LCh}	67, 13.818, 59.414
Yxy	36.5971, 0.3540, 0.3513
Android (android.graphics.Color)	4290289294 (0xFFB89E8E)
YUV	163.9500, -10.8213, 17.5839
Hunter-Lab	60.4955, 2.9418, 12.2474

Details

The XYZ color **36.8765, 36.5971, 30.7115** is a light color, and the websafe version is hex **CC9999**. A complement of this color would be **33.8093, 37.2156, 50.7489**, and the grayscale version is **35.3066, 37.1453, 40.4512**.

A 20% lighter version of the original color is **69.6932, 70.0993, 62.0818**, and **16.3954, 16.0339, 12.3559** is the 20% darker color. If you saturate the color by 10%, you get **33.7542, 32.3838, 23.4085**, and if you desaturate by 10%, it is **40.4088, 41.2651, 39.2772**.

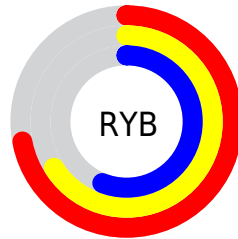
Distribution



Red (72%)

Green (62%)

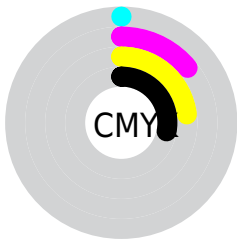
Blue (56%)



Red (72%)

Yellow (66%)

Blue (56%)

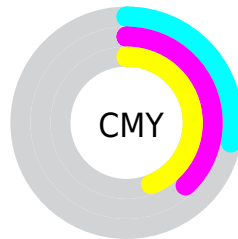


Cyan (0%)

Magenta (14%)

Yellow (23%)

Black (28%)



Cyan (28%)

Magenta (38%)

Yellow (44%)

Brightness & Saturation Gradients

These gradients show how the XYZ color 36.8765, 36.5971, 30.7115 changes by changing the brightness by 10 percent. The first figure shows a shift by +10% for each color and the second figure -10%.

Similar to the brightness gradients but the following saturation gradients show a change of the XYZ color 36.8765, 36.5971, 30.7115 by changing the saturation by 10% instead.

■ 36.8765, 36.5971,
30.7115

■ 36.8765, 36.5971,
30.7115

324.1404,
331.5629, 319.5169

■ 25.2851, 24.8957,
20.1226

■ 69.6979, 69.9527,
61.8598

■ 16.4195, 15.9994,
12.2993

■ 91.6586, 92.3757,
83.2564

■ 9.9142, 9.5237,
6.8228

■ 117.8064,
119.1413, 109.0925

■ 5.4039, 5.0843,
3.2748

148.5068,
150.6339, 139.7869

■ 2.5233, 2.2968,
1.2366

184.1250,
187.2380, 175.7580

■ 0.9070, 0.7720,
0.0090

225.0264,

■ 0.0000, 0.0000,

229.3380, 217.4243

0.0000

271.5764,
277.3181, 265.2044

■ 36.8765, 36.5971,
30.7115

■ 36.8765, 36.5971,
30.7115

■ 33.7542, 32.3838,
23.4085

■ 40.4088, 41.2651,
39.2772

■ 31.0231, 28.6059,
17.3053

■ 44.3635, 46.3963,
49.1597

■ 28.6668, 25.2501,
12.3371

■ 48.7556, 52.0053,
60.4126

■ 26.6668, 22.3005,
8.4322

■ 53.5988, 58.1044,
73.0861

■ 25.0026, 19.7399,
5.5101

■ 58.9060, 64.7057,
87.2276

■ 23.6511, 17.5497,
3.4791

■ 64.6898, 71.8205,
102.8825

■ 22.5858, 15.7091,
2.2294

■ 68.3121, 78.4001,
106.1400

■ 21.9644, 14.5848,
1.6575

■ 71.7284, 85.2328,
107.2788

■ 73.5772, 88.9304,
107.8951

Harmonies

Analogous

The Analogous color harmony consists of three colors that are next to each other on the color wheel.



38.4160, 36.5971, 34.4420



36.8765, 36.5971, 30.7115



34.8257, 36.5971, 29.3813

Triad

The Triadic color harmony groups three colors that are evenly spaced from another and form a triangle on the color wheel.



36.8765, 36.5971, 30.7115



30.9067, 36.5971, 39.7301



36.8023, 36.5971, 50.7762

Complementary

The Complementary color scheme is a pair of colors which are on the opposite of each other on the color wheel.



36.8765, 36.5971, 30.7115



33.8093, 37.2156, 50.7489

Split Complementary

Split-complementary colors differ from the complementary color scheme. The scheme consists of three colors, the original color and two neighbors of the complement color.



34.7432, 36.5971, 52.5451



36.8765, 36.5971, 30.7115



31.3893, 36.5971, 45.7921

Square

The Square scheme is like the rectangle color scheme, but the four colors are evenly spaced on the color wheel.



36.8765, 36.5971, 30.7115



31.4278, 36.5971, 34.2568



32.7730, 36.5971, 50.6376



38.3720, 36.5971, 46.0167

Rectangle

The Rectangle color scheme consists of four colors that form a rectangle on the color wheel.



36.8765, 36.5971, 30.7115



33.4614, 36.5971, 29.9199



32.7730, 36.5971, 50.6376



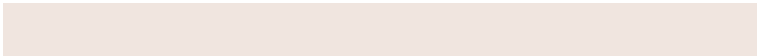
36.1419, 36.5971, 51.7603

Sweetspot

The Sweet Spot groups the original color and five complimentary colors.



36.8775, 36.5988, 30.7123



77.2485, 80.0091, 81.1281



36.5644, 32.3863, 41.6639



16.5615, 17.1294, 17.2602



88.6918, 93.3107, 101.6153



17.8044, 18.7317, 20.3988

Same Dimension

The Same Dimension uses a secret algorithm to generate beautiful new colors.



36.8775, 36.5988, 30.7123



64.1409, 62.7101, 49.2713



40.6500, 44.1438, 31.9698



9.2776, 9.5581, 9.4628



15.2013, 10.1791, 1.1636



0.5964, 0.4798, 0.0612

Inverse Universe

The Inverse Universe completely reimagines the original color for something new.



33.8093, 37.2156, 50.7489



57.6689, 64.0060, 91.5195



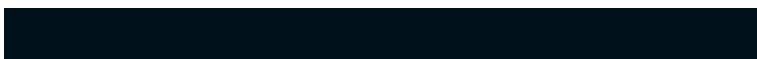
30.3347, 30.2665, 49.5907



8.9714, 9.6201, 11.4635



10.1710, 10.8017, 32.8019



0.4163, 0.4963, 1.1756

Previews

White Background



This preview shows how the XYZ color 36.8765, 36.5971, 30.7115 looks on a white background.

Color Contrast Check

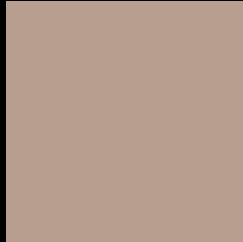
Large Text (above 18pt) WCAG AA × Fail

Any Text WCAG AA × Fail

Large Text (above 18pt) WCAG AAA × Fail

Any Text WCAG AAA × Fail

Black Background



This preview shows how the XYZ color 36.8765, 36.5971, 30.7115 looks on a black background.

Color Contrast Check

Large Text (above 18pt) WCAG AA ✓ Pass

Any Text WCAG AA ✓ Pass

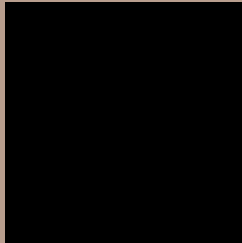
Large Text (above 18pt) WCAG AAA ✓ Pass

Any Text WCAG AAA ✓ Pass

If you want to check with other color combinations, try the [Color Contrast Checker](#).

XYZ 36.8765, 36.5971, 30.7115

Background



This preview shows how black text looks on a background with the XYZ color 36.8765, 36.5971, 30.7115.



This preview shows how white text looks on a background with the XYZ color 36.8765, 36.5971,

Color Blindness Simulation

Color vision deficiency is a very complex topic, and I could not describe the different causes any better than Wikipedia does, so if you want to learn more, you should check out their [article about color blindness](#).

Dichromacy



Original Color

36.8765, 36.5971, 30.7115

Protanopia

34.7088, 36.7540, 31.6504

Deuteranopia

37.1892, 36.5060, 30.6775



Tritanopia

38.9321, 36.4292, 41.0560

Trichromacy



Original Color

36.8765, 36.5971, 30.7115

Protanomaly

35.3820, 36.5869, 31.1837

Deuteranomaly

36.9470, 36.3812, 30.6661

Tritanomaly

38.0568, 36.3161, 36.9022

Monochromacy



Original Color

36.8765, 36.5971, 30.7115

Achromatopsia

35.2861, 37.1238, 40.4278

Achromatomaly

35.7157, 36.8989, 36.6923

CSS Examples

Text

The CSS property to change the color of the text to XYZ 36.8765, 36.5971, 30.7115 is called "color". The color property can be set on classes, ids or directly on the HTML element.

This example shows how text in the color `rgb(184, 158, 142)` looks like.

```
.text, #text, p{  
    color:rgb(184, 158, 142)  
}
```

If you want to add a text shadow in that color use the text-shadow property, you can generate a text shadow directly with our [CSS Text Shadow Generator](#).

Here you see how black text with a 4 pixel rgb(184, 158, 142) colored shadow looks like.

```
.shadow{ text-shadow: 4px 4px 2px rgb(184, 158, 142) }
```

Border

The CSS property to change the border of an element to XYZ 36.8765, 36.5971, 30.7115 is called "border". The border property can be set on classes, ids or directly on the HTML element.

This example shows the color as border, it can be applied via the CSS property "border" or "border-color".

```
.border, #border, table{ border:4px solid rgb(184, 158, 142) }
```


If only the border color should be changed use the property `border-color`.

```
.border{ border-color:rgb(184, 158, 142) }
```

If you want to add a box shadow in that color use:

Here you see how a box with a 4 pixel `rgb(184, 158, 142)` colored shadow looks like.

```
.boxshadow{ -moz-box-shadow:4px 4px 4px  
4px rgb(184, 158, 142); -webkit-box-  
shadow:4px 4px 4px 4px rgb(184, 158, 142);  
box-shadow:4px 4px 4px 4px rgb(184, 158,  
142) }
```

Background

The CSS property to change the background color of an element to XYZ 36.8765, 36.5971, 30.7115 is called "background". The background property can be set on classes, ids or directly on the HTML element.

```
.background, #background, body{  
background: rgb(184, 158, 142) }
```

If only the background color should be changed can be used:

```
.background{ background-color: rgb(184,  
158, 142) }
```

This example shows the color as background, it is applied via the CSS property "background".

To optimize and compress your CSS code, you can use our [online CSS compressor and optimizer](#) based on csstidy. If you want to create a linear or radial gradient as background or border, check our [CSS Gradient Generator](#).

Hey! You found this booklet interesting? Support Converting Colors with the new Membership Option!

The pro membership hides all ads, plus gives you double the colors in the color bucket, and more awesome pro features!

[Learn more, Memberships starting at \\$2.50/m!](#)

**Follow me
on Twitter!**

@ConvertingColor