

Converting Colors

XYZ(36.9189, 35.9142, 37.0703)

Have a look what the booklet for
XYZ(36.9189, 35.9142, 37.0703)
contains.

XYZ(37.0303, 36.0350, 36.9020)	3
<i>Conversions</i>	4
<i>Details</i>	6
<i>Harmonies</i>	12
<i>Previews</i>	24
<i>Color Blindness Simulation</i>	28
<i>CSS Examples</i>	31

Color

**XYZ(37.0303, 36.0350,
36.9020)**

Conversions

Conversions Part 1

Format	Color
Hex	B59C9D
RGB	181, 156, 157
RGB Percent	71%, 61%, 62%
CMY	0.2902, 0.3882, 0.3843
CMYK	0.00, 0.14, 0.13, 0.29
HSL	358°, 14%, 66%
HSV	358°, 14%, 71%
XYZ	37.0303, 36.0350, 36.9020
YIQ	163.5890, 14.5790, 5.6110

Conversions

Conversions Part 2

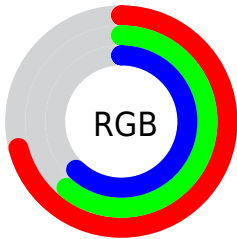
Format	Color
RYB	181, 156, 157
Decimal	11902109
CIELab	66.55, 9.38, 2.88
CIElCh	67, 9.810, 17.072
Yxy	36.0350, 0.3367, 0.3277
Android (android.graphics.Color)	4290092189 (0xFFB59C9D)
YUV	163.5890, -3.2484, 15.2694
Hunter-Lab	60.0292, 5.0606, 5.5728

Details

The XYZ color **37.0303, 36.0350, 36.9020** is a light color, and the websafe version is hex **999999**. A complement of this color would be **38.4738, 43.4118, 49.5337**, and the grayscale version is **35.1023, 36.9303, 40.2171**.

A 20% lighter version of the original color is **70.1030, 69.3465, 71.9777**, and **16.5552, 15.7330, 15.7999** is the 20% darker color. If you saturate the color by 10%, you get **32.8368, 29.8557, 28.6974**, and if you desaturate by 10%, it is **41.8895, 43.2071, 46.3706**.

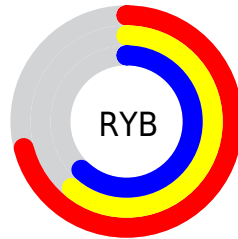
Distribution



Red (71%)

Green (61%)

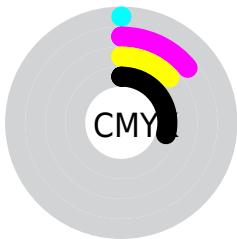
Blue (62%)



Red (71%)

Yellow (61%)

Blue (62%)

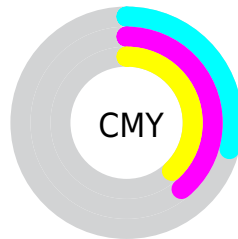


Cyan (0%)

Magenta (14%)

Yellow (13%)

Black (29%)



Cyan (29%)

Magenta (39%)

Yellow (38%)

Brightness & Saturation Gradients

These gradients show how the XYZ color 37.0303, 36.0350, 36.9020 changes by changing the brightness by 10 percent. The first figure shows a shift by +10% for each color and the second figure -10%.

Similar to the brightness gradients but the following saturation gradients show a change of the XYZ color 37.0303, 36.0350, 36.9020 by changing the saturation by 10% instead.

■ 37.0303, 36.0350,
36.9020

■ 37.0303, 36.0350,
36.9020

324.7949,
329.1135, 348.0419

■ 25.4047, 24.4612,
24.8364

■ 69.9329, 69.0861,
71.6067

■ 16.5092, 15.6761,
15.7373

■ 91.9407, 91.3322,
95.0829

■ 9.9783, 9.2953,
9.1861

118.1399,
117.9045, 123.1997

■ 5.4467, 4.9343,
4.7643

148.8959,
149.1875, 156.3756

■ 2.5491, 2.2087,
2.0533

184.5740,
185.5655, 195.0293

■ 0.9201, 0.7248,
0.5878

225.5397,

■ 0.0000, 0.0000,

227.4229, 239.5792

0.0000

272.1582,
275.1441, 290.4439

■ 37.0303, 36.0350,
36.9020

■ 37.0303, 36.0350,
36.9020

■ 32.8368, 29.8557,
28.6974

■ 41.8895, 43.2071,
46.3706

■ 29.2772, 24.6210,
21.7011

■ 47.4384, 51.4080,
57.1511

■ 26.3215, 20.2857,
15.8567

■ 53.7036, 60.6778,
69.2916

■ 23.9362, 16.7993,
11.1026

■ 60.7093, 71.0528,
82.8371

■ 22.0845, 14.1061,
7.3712

■ 68.4786, 82.5680,
97.8308

■ 20.7254, 12.1439,
4.5874

■ 72.8662, 88.5638,
107.8618

■ 19.8117, 10.8410,
2.6660

■ 19.2872, 10.1115,
1.5063

■ 19.0957, 9.8396,
1.1000

Harmonies

Analogous

The Analogous color harmony consists of three colors that are next to each other on the color wheel.



37.0862, 36.0350, 41.0793



37.0303, 36.0350, 36.9020



36.2161, 36.0350, 33.5901

Triad

The Triadic color harmony groups three colors that are evenly spaced from another and form a triangle on the color wheel.



37.0303, 36.0350, 36.9020



32.2175, 36.0350, 33.9655



33.6203, 36.0350, 47.6868

Complementary

The Complementary color scheme is a pair of colors which are on the opposite of each other on the color wheel.



37.0303, 36.0350, 36.9020



38.4738, 43.4118, 49.5337

Split Complementary

Split-complementary colors differ from the complementary color scheme. The scheme consists of three colors, the original color and two neighbors of the complement color.



32.3567, 36.0350, 45.4815



37.0303, 36.0350, 36.9020



31.5626, 36.0350, 37.4487

Square

The Square scheme is like the rectangle color scheme, but the four colors are evenly spaced on the color wheel.



37.0303, 36.0350, 36.9020



33.4252, 36.0350, 31.9800



31.6128, 36.0350, 41.6664



35.0886, 36.0350, 47.5141

Rectangle

The Rectangle color scheme consists of four colors that form a rectangle on the color wheel.



37.0303, 36.0350, 36.9020



35.3657, 36.0350, 32.2280



31.6128, 36.0350, 41.6664



33.1584, 36.0350, 47.1927

Sweetspot

The Sweet Spot groups the original color and five complimentary colors.



37.0313, 36.0366, 36.9028



74.7839, 77.0300, 82.5837



38.9942, 36.7881, 48.7620



16.0147, 16.4293, 17.5598



86.6293, 91.1408, 99.2523



17.0014, 17.8868, 19.4787

Same Dimension

The Same Dimension uses a secret algorithm to generate beautiful new colors.



37.0313, 36.0366, 36.9028



63.5799, 60.4977, 60.7348



38.9224, 39.9544, 37.1150



8.5096, 8.5106, 8.9162



13.1703, 6.7857, 0.7908



0.4189, 0.2153, 0.0487

Inverse Universe

The Inverse Universe completely reimagines the original color for something new.



37.0313, 36.0366, 36.9028



63.5799, 60.4977, 60.7348



36.3800, 39.0613, 49.3385



8.5096, 8.5106, 8.9162



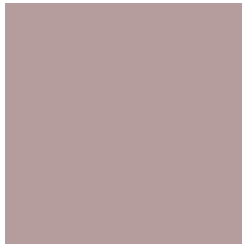
13.1703, 6.7857, 0.7908



0.4189, 0.2153, 0.0487

Previews

White Background



This preview shows how the XYZ color 37.0303, 36.0350, 36.9020 looks on a white background.

Color Contrast Check

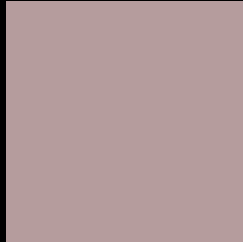
Large Text (above 18pt) WCAG AA × Fail

Any Text WCAG AA × Fail

Large Text (above 18pt) WCAG AAA × Fail

Any Text WCAG AAA × Fail

Black Background



This preview shows how the XYZ color 37.0303, 36.0350, 36.9020 looks on a black background.

Color Contrast Check

Large Text (above 18pt) WCAG AA ✓ Pass

Any Text WCAG AA ✓ Pass

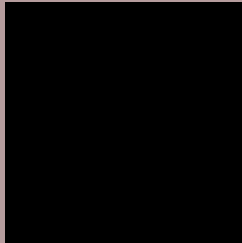
Large Text (above 18pt) WCAG AAA ✓ Pass

Any Text WCAG AAA ✓ Pass

If you want to check with other color combinations, try the [Color Contrast Checker](#).

XYZ 37.0303, 36.0350, 36.9020

Background



This preview shows how black text looks on a background with the XYZ color 37.0303, 36.0350, 36.9020.



This preview shows how white text looks on a background with the XYZ color 37.0303, 36.0350,

Color Blindness Simulation

Color vision deficiency is a very complex topic, and I could not describe the different causes any better than Wikipedia does, so if you want to learn more, you should check out their [article about color blindness](#).

Dichromacy



Original Color

37.0303, 36.0350, 36.9020

Protanopia

34.6071, 36.0271, 38.3876

Deuteranopia

36.7332, 36.1320, 36.9364



Tritanopia

37.9878, 36.1778, 41.5401

Trichromacy



Original Color

37.0303, 36.0350, 36.9020

Protanomaly

35.4507, 35.9574, 37.8729

Deuteranomaly

36.9652, 36.2516, 36.9473

Tritanomaly

37.6236, 36.0321, 39.6222

Monochromacy



Original Color

37.0303, 36.0350, 36.9020

Achromatopsia

35.2861, 37.1238, 40.4278

Achromatomaly

35.7555, 36.6090, 38.8999

CSS Examples

Text

The CSS property to change the color of the text to XYZ 37.0303, 36.0350, 36.9020 is called "color". The color property can be set on classes, ids or directly on the HTML element.

This example shows how text in the color `rgb(181, 156, 157)` looks like.

```
.text, #text, p{  
    color:rgb(181, 156, 157)  
}
```

If you want to add a text shadow in that color use the text-shadow property, you can generate a text shadow directly with our [CSS Text Shadow Generator](#).

Here you see how black text with a 4 pixel rgb(181, 156, 157) colored shadow looks like.

```
.shadow{ text-shadow: 4px 4px 2px rgb(181, 156, 157) }
```

Border

The CSS property to change the border of an element to XYZ 37.0303, 36.0350, 36.9020 is called "border". The border property can be set on classes, ids or directly on the HTML element.

This example shows the color as border, it can be applied via the CSS property "border" or "border-color".

```
.border, #border, table{ border:4px solid rgb(181, 156, 157) }
```


If only the border color should be changed use the property `border-color`.

```
.border{ border-color:rgb(181, 156, 157) }
```

If you want to add a box shadow in that color use:

Here you see how a box with a 4 pixel `rgb(181, 156, 157)` colored shadow looks like.

```
.boxshadow{ -moz-box-shadow:4px 4px 4px  
4px rgb(181, 156, 157); -webkit-box-  
shadow:4px 4px 4px 4px rgb(181, 156, 157);  
box-shadow:4px 4px 4px 4px rgb(181, 156,  
157) }
```

Background

The CSS property to change the background color of an element to XYZ 37.0303, 36.0350, 36.9020 is called "background". The background property can be set on classes, ids or directly on the HTML element.

```
.background, #background, body{  
background: rgb(181, 156, 157) }
```

If only the background color should be changed can be used:

```
.background{ background-color: rgb(181,  
156, 157) }
```

This example shows the color as background, it is applied via the CSS property "background".

To optimize and compress your CSS code, you can use our [online CSS compressor and optimizer](#) based on csstidy. If you want to create a linear or radial gradient as background or border, check our [CSS Gradient Generator](#).

Hey! You found this booklet interesting? Support Converting Colors with the new Membership Option!

The pro membership hides all ads, plus gives you double the colors in the color bucket, and more awesome pro features!

[Learn more, Memberships starting at \\$2.50/m!](#)

**Follow me
on Twitter!**

@ConvertingColor