

Converting Colors

XYZ(36.9228, 35.0089, 34.3625)

Have a look what the booklet for
XYZ(36.9228, 35.0089, 34.3625)
contains.

XYZ(36.9033, 35.0378, 34.5237)	3
<i>Conversions</i>	4
<i>Details</i>	6
<i>Harmonies</i>	12
<i>Previews</i>	24
<i>Color Blindness Simulation</i>	28
<i>CSS Examples</i>	31

Color

**XYZ(36.9033, 35.0378,
34.5237)**

Conversions

Conversions Part 1

Format	Color
Hex	B99898
RGB	185, 152, 152
RGB Percent	73%, 60%, 60%
CMY	0.2745, 0.4039, 0.4039
CMYK	0.00, 0.18, 0.18, 0.27
HSL	0°, 19%, 66%
HSV	0°, 18%, 73%
XYZ	36.9033, 35.0378, 34.5237
YIQ	161.8670, 19.6680, 6.9960

Conversions

Conversions Part 2

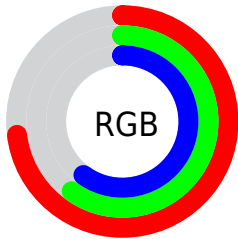
Format	Color
RYB	185, 152, 152
Decimal	12163224
CIELab	65.78, 12.27, 4.62
CIElCh	66, 13.112, 20.617
Yxy	35.0378, 0.3466, 0.3291
Android (android.graphics.Color)	4290353304 (0xFFB99898)
YUV	161.8670, -4.8644, 20.2876
Hunter-Lab	59.1927, 7.6973, 6.8545

Details

The XYZ color **36.9033, 35.0378, 34.5237** is a light color, and the websafe version is hex **CC9999**. A complement of this color would be **39.0544, 44.8748, 52.5025**, and the grayscale version is **34.2968, 36.0829, 39.2943**.

A 20% lighter version of the original color is **69.4875, 67.2996, 67.7203**, and **16.3627, 15.0722, 14.3587** is the 20% darker color. If you saturate the color by 10%, you get **32.7331, 28.9358, 26.2322**, and if you desaturate by 10%, it is **41.7800, 42.1739, 44.2176**.

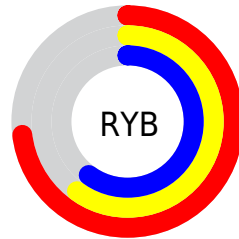
Distribution



Red (73%)

Green (60%)

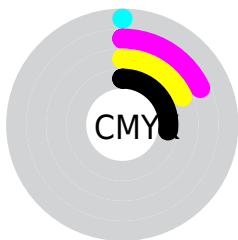
Blue (60%)



Red (73%)

Yellow (60%)

Blue (60%)

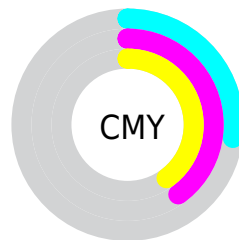


Cyan (0%)

Magenta (18%)

Yellow (18%)

Black (27%)



Cyan (27%)


Magenta (40%)


Yellow (40%)

Brightness & Saturation Gradients


These gradients show how the XYZ color 36.9033, 35.0378, 34.5237 changes by changing the brightness by 10 percent. The first figure shows a shift by +10% for each color and the second figure -10%.


Similar to the brightness gradients but the following saturation gradients show a change of the XYZ color 36.9033, 35.0378, 34.5237 by changing the saturation by 10% instead.


 36.9033, 35.0378,
34.5237


 36.9033, 35.0378,
34.5237

324.2545,
324.7351, 337.3011

 25.3060, 23.6920,
23.0156


 69.7388, 67.5443,
67.8904

 16.4351, 15.1053,
14.3996

 91.7077, 89.4738,
90.5861

 9.9254, 8.8933,
8.2572


117.8645,
115.7000, 117.8481

 5.4114, 4.6717,
4.1698

148.5746,
146.6073, 150.0949

 2.5278, 2.0559,
1.7190

184.2033,
182.5801, 187.7451

 0.9093, 0.6397,
0.3737

225.1159,

 0.0000, 0.0000,

224.0027, 231.2171

0.0000

271.6779,
271.2596, 280.9296

■ 36.9033, 35.0378,
34.5237

■ 36.9033, 35.0378,
34.5237

■ 32.7331, 28.9358,
26.2322

■ 41.7800, 42.1739,
44.2176

■ 29.2340, 23.8156,
19.2760

■ 47.3908, 50.3840,
55.3721

■ 26.3718, 19.6274,
13.5862

■ 53.7654, 59.7115,
68.0450

■ 24.1082, 16.3150,
9.0864

■ 60.9307, 70.1963,
82.2902

■ 22.4007, 13.8165,
5.6923

■ 68.9127, 81.8759,
98.1591

■ 21.2015, 12.0615,
3.3086

■ 73.8177, 89.0543,
107.9063

■ 20.4543, 10.9681,
1.8236

■ 20.0732, 10.4104,
1.0663

■ 20.0079, 10.3148,
0.9364

Harmonies

Analogous

The Analogous color harmony consists of three colors that are next to each other on the color wheel.



37.1053, 35.0378, 39.9118



36.9033, 35.0378, 34.5237



35.7165, 35.0378, 30.5006

Triad

The Triadic color harmony groups three colors that are evenly spaced from another and form a triangle on the color wheel.



36.9033, 35.0378, 34.5237



30.5116, 35.0378, 31.7875



32.7002, 35.0378, 49.6444

Complementary

The Complementary color scheme is a pair of colors which are on the opposite of each other on the color wheel.



36.9033, 35.0378, 34.5237



39.0544, 44.8748, 52.5025

Split Complementary

Split-complementary colors differ from the complementary color scheme. The scheme consists of three colors, the original color and two neighbors of the complement color.



30.9995, 35.0378, 46.9824



36.9033, 35.0378, 34.5237



29.7686, 35.0378, 36.4412

Square

The Square scheme is like the rectangle color scheme, but the four colors are evenly spaced on the color wheel.



36.9033, 35.0378, 34.5237



32.0108, 35.0378, 29.0302



29.9437, 35.0378, 42.0222



34.6283, 35.0378, 49.0044

Rectangle

The Rectangle color scheme consists of four colors that form a rectangle on the color wheel.



36.9033, 35.0378, 34.5237



34.5511, 35.0378, 28.9649



29.9437, 35.0378, 42.0222



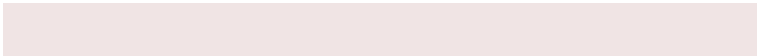
32.0842, 35.0378, 49.0971

Sweetspot

The Sweet Spot groups the original color and five complimentary colors.



36.9043, 35.0394, 34.5244



77.4629, 79.3893, 84.4325



39.9931, 36.2739, 50.7929



16.5537, 16.9014, 17.9121



88.6918, 93.3107, 101.6153



17.8044, 18.7317, 20.3988

Same Dimension

The Same Dimension uses a secret algorithm to generate beautiful new colors.



36.9043, 35.0394, 34.5244



63.3352, 58.7167, 56.3463



39.7705, 40.7719, 35.4798



9.0047, 9.0124, 9.3719



13.6236, 7.0235, 0.6376



0.4803, 0.2477, 0.0225

Inverse Universe

The Inverse Universe completely reimagines the original color for something new.



39.0544, 44.8748, 52.5025



67.8303, 79.2791, 93.9320



35.8013, 38.3688, 51.4181



9.2666, 10.2105, 11.5619



17.7729, 26.0054, 35.3359



0.6266, 0.9168, 1.2457

Previews

White Background



This preview shows how the XYZ color 36.9033, 35.0378, 34.5237 looks on a white background.

Color Contrast Check

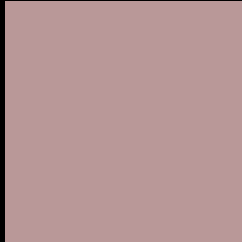
Large Text (above 18pt) WCAG AA × Fail

Any Text WCAG AA × Fail

Large Text (above 18pt) WCAG AAA × Fail

Any Text WCAG AAA × Fail

Black Background



This preview shows how the XYZ color 36.9033, 35.0378, 34.5237 looks on a black background.

Color Contrast Check

Large Text (above 18pt) WCAG AA ✓ Pass

Any Text WCAG AA ✓ Pass

Large Text (above 18pt) WCAG AAA ✓ Pass

Any Text WCAG AAA ✓ Pass

If you want to check with other color combinations, try the [Color Contrast Checker](#).

XYZ 36.9033, 35.0378, 34.5237

Background



This preview shows how black text looks on a background with the XYZ color 36.9033, 35.0378, 34.5237.



This preview shows how white text looks on a background with the XYZ color 36.9033, 35.0378,

Color Blindness Simulation

Color vision deficiency is a very complex topic, and I could not describe the different causes any better than Wikipedia does, so if you want to learn more, you should check out their [article about color blindness](#).

Dichromacy



Original Color

36.9033, 35.0378, 34.5237

Protanopia

33.7087, 35.0891, 36.4487

Deuteranopia

35.9792, 35.2934, 34.6218



Tritanopia

37.6776, 34.8604, 38.9253

Trichromacy



Original Color

36.9033, 35.0378, 34.5237

Protanomaly

34.8181, 34.9141, 35.9143

Deuteranomaly

36.2792, 35.2020, 34.5883

Tritanomaly

37.4879, 35.0409, 37.1355

Monochromacy



Original Color

36.9033, 35.0378, 34.5237

Achromatopsia

34.3422, 36.1307, 39.3463

Achromatomaly

34.9760, 35.4684, 37.3504

CSS Examples

Text

The CSS property to change the color of the text to XYZ 36.9033, 35.0378, 34.5237 is called "color". The color property can be set on classes, ids or directly on the HTML element.

This example shows how text in the color `rgb(185, 152, 152)` looks like.

```
.text, #text, p{  
    color:rgb(185, 152, 152)  
}
```

If you want to add a text shadow in that color use the text-shadow property, you can generate a text shadow directly with our [CSS Text Shadow Generator](#).

Here you see how black text with a 4 pixel rgb(185, 152, 152) colored shadow looks like.

```
.shadow{ text-shadow: 4px 4px 2px rgb(185, 152, 152) }
```

Border

The CSS property to change the border of an element to XYZ 36.9033, 35.0378, 34.5237 is called "border". The border property can be set on classes, ids or directly on the HTML element.

This example shows the color as border, it can be applied via the CSS property "border" or "border-color".

```
.border, #border, table{ border:4px solid rgb(185, 152, 152) }
```


If only the border color should be changed use the property `border-color`.

```
.border{ border-color:rgb(185, 152, 152) }
```

If you want to add a box shadow in that color use:

Here you see how a box with a 4 pixel `rgb(185, 152, 152)` colored shadow looks like.

```
.boxshadow{ -moz-box-shadow:4px 4px 4px  
4px rgb(185, 152, 152); -webkit-box-  
shadow:4px 4px 4px 4px rgb(185, 152, 152);  
box-shadow:4px 4px 4px 4px rgb(185, 152,  
152) }
```

Background

The CSS property to change the background color of an element to XYZ 36.9033, 35.0378, 34.5237 is called "background". The background property can be set on classes, ids or directly on the HTML element.

```
.background, #background, body{  
background: rgb(185, 152, 152) }
```

If only the background color should be changed can be used:

```
.background{ background-color: rgb(185,  
152, 152) }
```

This example shows the color as background, it is applied via the CSS property "background".

To optimize and compress your CSS code, you can use our [online CSS compressor and optimizer](#) based on csstidy. If you want to create a linear or radial gradient as background or border, check our [CSS Gradient Generator](#).

Hey! You found this booklet interesting? Support Converting Colors with the new Membership Option!

The pro membership hides all ads, plus gives you double the colors in the color bucket, and more awesome pro features!

[Learn more, Memberships starting at \\$2.50/m!](#)

**Follow me
on Twitter!**

@ConvertingColor