

Converting Colors

XYZ(36.9316, 33.9286, 33.7288)

Have a look what the booklet for
XYZ(36.9316, 33.9286, 33.7288)
contains.

XYZ(37.0059, 33.9206, 33.8751)	3
<i>Conversions</i>	4
<i>Details</i>	6
<i>Harmonies</i>	12
<i>Previews</i>	24
<i>Color Blindness Simulation</i>	28
<i>CSS Examples</i>	31

Color

**XYZ(37.0059, 33.9206,
33.8751)**

Conversions

Conversions Part 1

Format	Color
Hex	BD9397
RGB	189, 147, 151
RGB Percent	74%, 58%, 59%
CMY	0.2588, 0.4235, 0.4078
CMYK	0.00, 0.22, 0.20, 0.26
HSL	354°, 24%, 66%
HSV	354°, 22%, 74%
XYZ	37.0059, 33.9206, 33.8751
YIQ	160.0140, 23.7480, 10.1480

Conversions

Conversions Part 2

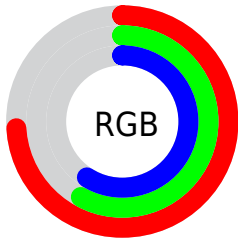
Format	Color
R _Y B	189, 147, 151
Decimal	12424087
CIE Lab	64.90, 16.40, 3.96
CIE LCh	65, 16.869, 13.583
Yxy	33.9206, 0.3531, 0.3237
Android (android.graphics.Color)	4290614167 (0xFFBD9397)
YUV	160.0140, -4.4439, 25.4207
Hunter-Lab	58.2414, 11.4944, 6.2840

Details

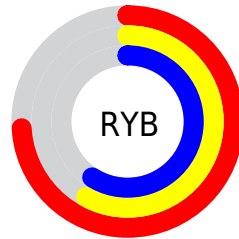
The XYZ color **37.0059, 33.9206, 33.8751** is a light color, and the websafe version is hex **CC9999**. A complement of this color would be **38.9885, 46.1018, 52.7448**, and the grayscale version is **33.4330, 35.1741, 38.3046**.

A 20% lighter version of the original color is **69.9121, 65.7739, 66.7685**, and **16.4748, 14.4367, 13.9748** is the 20% darker color. If you saturate the color by 10%, you get **33.0153, 28.0029, 26.1826**, and if you desaturate by 10%, it is **41.6827, 40.8876, 42.7911**.

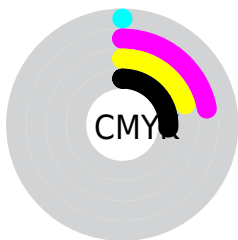
Distribution



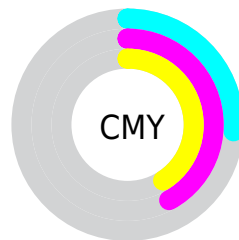
- Red (74%)
- Green (58%)
- Blue (59%)



- Red (74%)
- Yellow (58%)
- Blue (59%)



- Cyan (0%)
- Magenta (22%)
- Yellow (20%)
- Black (26%)





- Cyan (26%)
- Magenta (42%)
- Yellow (41%)

Brightness & Saturation Gradients


These gradients show how the XYZ color 37.0059, 33.9206, 33.8751 changes by changing the brightness by 10 percent. The first figure shows a shift by +10% for each color and the second figure -10%.


Similar to the brightness gradients but the following saturation gradients show a change of the XYZ color 37.0059, 33.9206, 33.8751 by changing the saturation by 10% instead.


 37.0059, 33.9206,
33.8751


 37.0059, 33.9206,
33.8751


324.6912,
319.7779, 334.3269

 25.3858, 22.8326,
22.5211


 69.8956, 65.8102,
66.8711

 16.4949, 14.4700,
14.0383

 91.8959, 87.3806,
89.3501

 9.9681, 8.4482,
8.0083


118.0870,
113.2138, 116.3745

 5.4399, 4.3831,
4.0124

148.8342,
143.6944, 148.3629

 2.5450, 1.8901,
1.6321

184.5028,
179.2068, 185.7338

 0.9180, 0.5424,
0.3136

225.4583,

 0.0000, 0.0000,

220.1352, 228.9058

0.0000

272.0660,
266.8641, 278.2973

■ 37.0059, 33.9206,
33.8751

■ 37.0059, 33.9206,
33.8751

■ 33.0153, 28.0029,
26.1826

■ 41.6827, 40.8876,
42.7911

■ 29.6759, 23.0795,
19.6582

■ 47.0730, 48.9466,
52.9785

■ 26.9539, 19.0969,
14.2453

■ 53.2060, 58.1431,
64.4854

■ 24.8112, 15.9953,
9.8817

■ 60.1084, 68.5192,
77.3565

■ 23.2055, 13.7075,
6.4991

■ 67.8056, 80.1145,
91.6345

■ 22.0888, 12.1571,
4.0213

■ 74.5733, 89.4697,
106.7775

■ 21.4043, 11.2527,
2.3604

■ 74.7964, 89.5589,
107.9521

■ 21.0955, 10.8625,
1.5565

Harmonies

Analogous

The Analogous color harmony consists of three colors that are next to each other on the color wheel.



36.9403, 33.9206, 40.8519



37.0059, 33.9206, 33.8751



35.7500, 33.9206, 28.4443

Triad

The Triadic color harmony groups three colors that are evenly spaced from another and form a triangle on the color wheel.



37.0059, 33.9206, 33.8751



29.1211, 33.9206, 28.0524



30.9361, 33.9206, 51.3368

Complementary

The Complementary color scheme is a pair of colors which are on the opposite of each other on the color wheel.



37.0059, 33.9206, 33.8751



38.9885, 46.1018, 52.7448

Split Complementary

Split-complementary colors differ from the complementary color scheme. The scheme consists of three colors, the original color and two neighbors of the complement color.



28.9685, 33.9206, 46.9638



37.0059, 33.9206, 33.8751



27.9573, 33.9206, 33.2745

Square

The Square scheme is like the rectangle color scheme, but the four colors are evenly spaced on the color wheel.



37.0059, 33.9206, 33.8751



31.1540, 33.9206, 25.3794



27.9029, 33.9206, 40.1712



33.3520, 33.9206, 51.5506

Rectangle

The Rectangle color scheme consists of four colors that form a rectangle on the color wheel.



37.0059, 33.9206, 33.8751



34.3673, 33.9206, 26.1855



27.9029, 33.9206, 40.1712



30.2033, 33.9206, 50.2818

Sweetspot

The Sweet Spot groups the original color and five complimentary colors.



37.0068, 33.9222, 33.8758



79.4216, 80.3523, 85.6683



39.5794, 34.8326, 52.7817



16.9554, 17.0943, 18.1885



90.7827, 95.5105, 104.0109



18.6292, 19.5994, 21.3438

Same Dimension

The Same Dimension uses a secret algorithm to generate beautiful new colors.



37.0068, 33.9222, 33.8758



62.4036, 55.0007, 53.2228



39.4934, 39.4061, 33.1303



9.5661, 9.5507, 10.1039



14.2068, 7.3139, 1.1166



0.5691, 0.2915, 0.1099

Inverse Universe

The Inverse Universe completely reimagines the original color for something new.



37.0068, 33.9222, 33.8758



62.4036, 55.0007, 53.2228



36.0098, 39.4597, 53.8630



9.5661, 9.5507, 10.1039



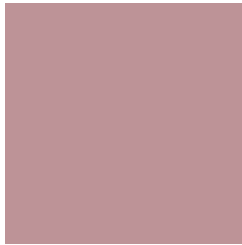
14.2068, 7.3139, 1.1166



0.5691, 0.2915, 0.1099

Previews

White Background



This preview shows how the XYZ color 37.0059, 33.9206, 33.8751 looks on a white background.

Color Contrast Check

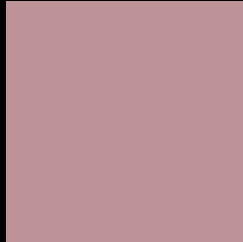
Large Text (above 18pt) WCAG AA × Fail

Any Text WCAG AA × Fail

Large Text (above 18pt) WCAG AAA × Fail

Any Text WCAG AAA × Fail

Black Background



This preview shows how the XYZ color 37.0059, 33.9206, 33.8751 looks on a black background.

Color Contrast Check

Large Text (above 18pt) WCAG AA ✓ Pass

Any Text WCAG AA ✓ Pass

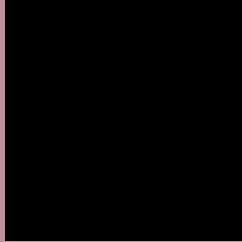
Large Text (above 18pt) WCAG AAA ✓ Pass

Any Text WCAG AAA ✓ Pass

If you want to check with other color combinations, try the [Color Contrast Checker](#).

XYZ 37.0059, 33.9206, 33.8751

Background



This preview shows how black text looks on a background with the XYZ color 37.0059, 33.9206, 33.8751.



This preview shows how white text looks on a background with the XYZ color 37.0059, 33.9206,

Color Blindness Simulation

Color vision deficiency is a very complex topic, and I could not describe the different causes any better than Wikipedia does, so if you want to learn more, you should check out their [article about color blindness](#).

Dichromacy



Original Color

37.0059, 33.9206, 33.8751

Protanopia

32.8407, 34.1253, 36.7542

Deuteranopia

34.6378, 33.8886, 33.5697



Tritanopia

37.5999, 33.9392, 36.4675

Trichromacy



Original Color

37.0059, 33.9206, 33.8751

Protanomaly

34.1022, 33.8070, 35.7384

Deuteranomaly

35.4674, 33.8385, 33.5163

Tritanomaly

37.4305, 33.8715, 35.5754

Monochromacy



Original Color

37.0059, 33.9206, 33.8751

Achromatopsia

33.4132, 35.1533, 38.2819

Achromatomaly

34.6017, 34.5349, 36.7405

CSS Examples

Text

The CSS property to change the color of the text to XYZ 37.0059, 33.9206, 33.8751 is called "color". The color property can be set on classes, ids or directly on the HTML element.

This example shows how text in the color `rgb(189, 147, 151)` looks like.

```
.text, #text, p{  
    color:rgb(189, 147, 151)  
}
```

If you want to add a text shadow in that color use the text-shadow property, you can generate a text shadow directly with our [CSS Text Shadow Generator](#).

Here you see how black text with a 4 pixel rgb(189, 147, 151) colored shadow looks like.

```
.shadow{ text-shadow: 4px 4px 2px rgb(189, 147, 151) }
```

Border

The CSS property to change the border of an element to XYZ 37.0059, 33.9206, 33.8751 is called "border". The border property can be set on classes, ids or directly on the HTML element.

This example shows the color as border, it can be applied via the CSS property "border" or "border-color".

```
.border, #border, table{ border:4px solid rgb(189, 147, 151) }
```


If only the border color should be changed use the property `border-color`.

```
.border{ border-color:rgb(189, 147, 151) }
```

If you want to add a box shadow in that color use:

Here you see how a box with a 4 pixel `rgb(189, 147, 151)` colored shadow looks like.

```
.boxshadow{ -moz-box-shadow:4px 4px 4px  
4px rgb(189, 147, 151); -webkit-box-  
shadow:4px 4px 4px 4px rgb(189, 147, 151);  
box-shadow:4px 4px 4px 4px rgb(189, 147,  
151) }
```

Background

The CSS property to change the background color of an element to XYZ 37.0059, 33.9206, 33.8751 is called "background". The background property can be set on classes, ids or directly on the HTML element.

```
.background, #background, body{  
background: rgb(189, 147, 151) }
```

If only the background color should be changed can be used:

```
.background{ background-color: rgb(189,  
147, 151) }
```

This example shows the color as background, it is applied via the CSS property "background".

To optimize and compress your CSS code, you can use our [online CSS compressor and optimizer](#) based on csstidy. If you want to create a linear or radial gradient as background or border, check our [CSS Gradient Generator](#).

Hey! You found this booklet interesting? Support Converting Colors with the new Membership Option!

The pro membership hides all ads, plus gives you double the colors in the color bucket, and more awesome pro features!

[Learn more, Memberships starting at \\$2.50/m!](#)

**Follow me
on Twitter!**

@ConvertingColor