

Converting Colors

XYZ(36.9359, 35.7159, 35.9406)

Have a look what the booklet for
XYZ(36.9359, 35.7159, 35.9406)
contains.

XYZ(36.9291, 35.7543, 35.9652)	3
<i>Conversions</i>	4
<i>Details</i>	6
<i>Harmonies</i>	12
<i>Previews</i>	24
<i>Color Blindness Simulation</i>	28
<i>CSS Examples</i>	31

Color

**XYZ(36.9291, 35.7543,
35.9652)**

Conversions

Conversions Part 1

Format	Color
Hex	B69B9B
RGB	182, 155, 155
RGB Percent	71%, 61%, 61%
CMY	0.2863, 0.3921, 0.3922
CMYK	0.00, 0.15, 0.15, 0.29
HSL	0°, 16%, 66%
HSV	0°, 15%, 71%
XYZ	36.9291, 35.7543, 35.9652
YIQ	163.0730, 16.0920, 5.7240

Conversions

Conversions Part 2

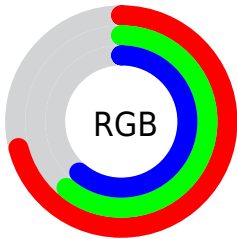
Format	Color
RYB	182, 155, 155
Decimal	11967387
CIELab	66.33, 9.97, 3.70
CIELCh	66, 10.635, 20.356
Yxy	35.7543, 0.3399, 0.3291
Android (android.graphics.Color)	4290157467 (0xFFB69B9B)
YUV	163.0730, -3.9800, 16.5990
Hunter-Lab	59.7949, 5.5998, 6.1949

Details

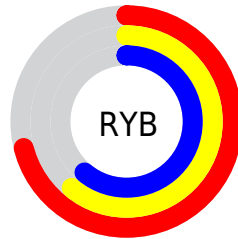
The XYZ color **36.9291, 35.7543, 35.9652** is a light color, and the websafe version is hex **CC9999**. A complement of this color would be **38.6887, 43.8008, 50.6715**, and the grayscale version is **34.8609, 36.6764, 39.9406**.

A 20% lighter version of the original color is **69.5690, 68.3815, 69.8539**, and **16.5023, 15.5672, 15.2317** is the 20% darker color. If you saturate the color by 10%, you get **32.7108, 29.5820, 27.5780**, and if you desaturate by 10%, it is **41.8362, 42.9348, 45.7195**.

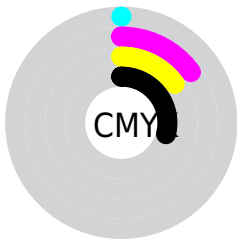
Distribution



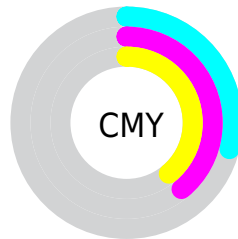
- Red (71%)
- Green (61%)
- Blue (61%)



- Red (71%)
- Yellow (61%)
- Blue (61%)



- Cyan (0%)
- Magenta (15%)
- Yellow (15%)
- Black (29%)



- Cyan (29%)
- Magenta (39%)
- Yellow (39%)

Brightness & Saturation Gradients

These gradients show how the XYZ color 36.9291, 35.7543, 35.9652 changes by changing the brightness by 10 percent. The first figure shows a shift by +10% for each color and the second figure -10%.

Similar to the brightness gradients but the following saturation gradients show a change of the XYZ color 36.9291, 35.7543, 35.9652 by changing the saturation by 10% instead.

■ 36.9291, 35.7543,
35.9652

■ 36.9291, 35.7543,
35.9652

324.3643,
327.8854, 343.8412

■ 25.3260, 24.2445,
24.1178

■ 69.7783, 68.6527,
70.1468

■ 16.4501, 15.5151,
15.2080

■ 91.7551, 90.8100,
93.3181

■ 9.9361, 9.1817,
8.8173

117.9205,
117.2853, 121.1011

■ 5.4186, 4.8599,
4.5270

148.6399,
148.4630, 153.9145

■ 2.5321, 2.1653,
1.9187

184.2786,
184.7275, 192.1766

■ 0.9115, 0.7010,
0.5046

225.2020,

■ 0.0000, 0.0000,

226.4631, 236.3061

0.0000

271.7755,
274.0543, 286.7214

■ 36.9291, 35.7543,
35.9652

■ 36.9291, 35.7543,
35.9652

■ 32.7108, 29.5820,
27.5780

■ 41.8362, 42.9348,
45.7195

■ 29.1477, 24.3682,
20.4947

■ 47.4579, 51.1607,
56.8957

■ 26.2079, 20.0664,
14.6505

■ 53.8221, 60.4732,
69.5484

■ 23.8556, 16.6242,
9.9742

■ 60.9547, 70.9099,
83.7285

■ 22.0512, 13.9839,
6.3875

■ 68.8800, 82.5065,
99.4848

■ 20.7506, 12.0806,
3.8023

■ 73.1015, 88.6851,
107.8728

■ 19.9027, 10.8397,
2.1170

■ 19.4453, 10.1703,
1.2081

■ 19.2918, 9.9456,
0.9029

Harmonies

Analogous

The Analogous color harmony consists of three colors that are next to each other on the color wheel.



37.0854, 35.7543, 40.4146



36.9291, 35.7543, 35.9652



35.9702, 35.7543, 32.5738

Triad

The Triadic color harmony groups three colors that are evenly spaced from another and form a triangle on the color wheel.



36.9291, 35.7543, 35.9652



31.6846, 35.7543, 33.6103



33.4741, 35.7543, 48.2097

Complementary

The Complementary color scheme is a pair of colors which are on the opposite of each other on the color wheel.



36.9291, 35.7543, 35.9652



38.6887, 43.8008, 50.6715

Split Complementary

Split-complementary colors differ from the complementary color scheme. The scheme consists of three colors, the original color and two neighbors of the complement color.



32.0711, 35.7543, 46.0644



36.9291, 35.7543, 35.9652



31.0594, 35.7543, 37.4829

Square

The Square scheme is like the rectangle color scheme, but the four colors are evenly spaced on the color wheel.



36.9291, 35.7543, 35.9652



32.9316, 35.7543, 31.2895



31.1986, 35.7543, 42.0542



35.0573, 35.7543, 47.7237

Rectangle

The Rectangle color scheme consists of four colors that form a rectangle on the color wheel.



36.9291, 35.7543, 35.9652



35.0209, 35.7543, 31.2573



31.1986, 35.7543, 42.0542



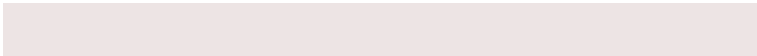
32.9666, 35.7543, 47.7664

Sweetspot

The Sweet Spot groups the original color and five complimentary colors.



36.9301, 35.7559, 35.9660



76.5835, 78.9159, 84.3504



39.4566, 36.7656, 49.2731



16.7554, 17.1967, 18.3133



88.6918, 93.3107, 101.6153



17.8044, 18.7317, 20.3988

Same Dimension

The Same Dimension uses a secret algorithm to generate beautiful new colors.



36.9301, 35.7559, 35.9660



64.1611, 60.7386, 59.6541



39.3033, 40.5023, 36.7570



9.0047, 9.0124, 9.3719



13.6236, 7.0235, 0.6376



0.4803, 0.2477, 0.0225

Inverse Universe

The Inverse Universe completely reimagines the original color for something new.



38.6887, 43.8008, 50.6715



68.0012, 78.3061, 91.7662



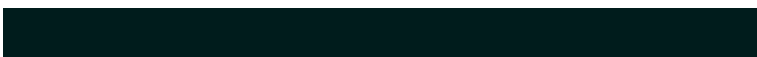
36.0566, 38.5366, 49.7942



9.2666, 10.2105, 11.5618



17.7725, 26.0047, 35.3358



0.6266, 0.9168, 1.2457

Previews

White Background



This preview shows how the XYZ color 36.9291, 35.7543, 35.9652 looks on a white background.

Color Contrast Check

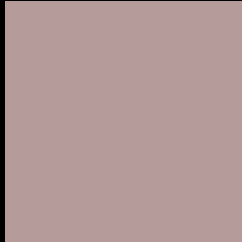
Large Text (above 18pt) WCAG AA × Fail

Any Text WCAG AA × Fail

Large Text (above 18pt) WCAG AAA × Fail

Any Text WCAG AAA × Fail

Black Background



This preview shows how the XYZ color 36.9291, 35.7543, 35.9652 looks on a black background.

Color Contrast Check

Large Text (above 18pt) WCAG AA ✓ Pass

Any Text WCAG AA ✓ Pass

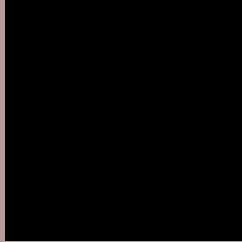
Large Text (above 18pt) WCAG AAA ✓ Pass

Any Text WCAG AAA ✓ Pass

If you want to check with other color combinations, try the [Color Contrast Checker](#).

XYZ 36.9291, 35.7543, 35.9652

Background



This preview shows how black text looks on a background with the XYZ color 36.9291, 35.7543, 35.9652.



This preview shows how white text looks on a background with the XYZ color 36.9291, 35.7543,

35.9652.

Color Blindness Simulation

Color vision deficiency is a very complex topic, and I could not describe the different causes any better than Wikipedia does, so if you want to learn more, you should check out their [article about color blindness](#).

Dichromacy



Original Color

36.9291, 35.7543, 35.9652

Protanopia

34.4335, 35.9577, 37.4734

Deuteranopia

36.3953, 35.7272, 35.9881



Tritanopia

37.7112, 35.5664, 40.4747

Trichromacy



Original Color

36.9291, 35.7543, 35.9652

Protanomaly

35.2785, 35.8885, 36.9661

Deuteranomaly

36.6273, 35.8468, 35.9990

Tritanomaly

37.5171, 35.7517, 38.6416

Monochromacy



Original Color

36.9291, 35.7543, 35.9652

Achromatopsia

34.8123, 36.6253, 39.8849

Achromatomaly

35.4935, 36.2257, 38.3793

CSS Examples

Text

The CSS property to change the color of the text to XYZ 36.9291, 35.7543, 35.9652 is called "color". The color property can be set on classes, ids or directly on the HTML element.

This example shows how text in the color `rgb(182, 155, 155)` looks like.

```
.text, #text, p{  
    color:rgb(182, 155, 155)  
}
```

If you want to add a text shadow in that color use the text-shadow property, you can generate a text shadow directly with our [CSS Text Shadow Generator](#).

Here you see how black text with a 4 pixel rgb(182, 155, 155) colored shadow looks like.

```
.shadow{ text-shadow: 4px 4px 2px rgb(182, 155, 155) }
```

Border

The CSS property to change the border of an element to XYZ 36.9291, 35.7543, 35.9652 is called "border". The border property can be set on classes, ids or directly on the HTML element.

This example shows the color as border, it can be applied via the CSS property "border" or "border-color".

```
.border, #border, table{ border:4px solid rgb(182, 155, 155) }
```


If only the border color should be changed use the property `border-color`.

```
.border{ border-color:rgb(182, 155, 155) }
```

If you want to add a box shadow in that color use:

Here you see how a box with a 4 pixel `rgb(182, 155, 155)` colored shadow looks like.

```
.boxshadow{ -moz-box-shadow:4px 4px 4px  
4px rgb(182, 155, 155); -webkit-box-  
shadow:4px 4px 4px 4px rgb(182, 155, 155);  
box-shadow:4px 4px 4px 4px rgb(182, 155,  
155) }
```

Background

The CSS property to change the background color of an element to XYZ 36.9291, 35.7543, 35.9652 is called "background". The background property can be set on classes, ids or directly on the HTML element.

```
.background, #background, body{  
background: rgb(182, 155, 155) }
```

If only the background color should be changed can be used:

```
.background{ background-color: rgb(182,  
155, 155) }
```

This example shows the color as background, it is applied via the CSS property "background".

To optimize and compress your CSS code, you can use our [online CSS compressor and optimizer](#) based on csstidy. If you want to create a linear or radial gradient as background or border, check our [CSS Gradient Generator](#).

Hey! You found this booklet interesting? Support Converting Colors with the new Membership Option!

The pro membership hides all ads, plus gives you double the colors in the color bucket, and more awesome pro features!

[Learn more, Memberships starting at \\$2.50/m!](#)

**Follow me
on Twitter!**

@ConvertingColor