

Converting Colors

XYZ(37.1472, 35.2271, 31.6996)

Have a look what the booklet for
XYZ(37.1472, 35.2271, 31.6996)
contains.

XYZ(37.0781, 35.1922, 31.6266)	3
<i>Conversions</i>	4
<i>Details</i>	6
<i>Harmonies</i>	12
<i>Previews</i>	24
<i>Color Blindness Simulation</i>	28
<i>CSS Examples</i>	31

Color

**XYZ(37.0781, 35.1922,
31.6266)**

Conversions

Conversions Part 1

Format	Color
Hex	BC9891
RGB	188, 152, 145
RGB Percent	74%, 60%, 57%
CMY	0.2627, 0.4039, 0.4314
CMYK	0.00, 0.19, 0.23, 0.26
HSL	10°, 24%, 65%
HSV	10°, 23%, 74%
XYZ	37.0781, 35.1922, 31.6266
YIQ	161.9660, 23.7030, 5.4550

Conversions

Conversions Part 2

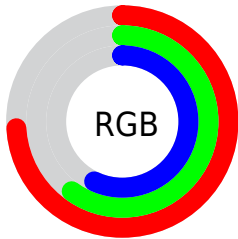
Format	Color
RYB	188, 153, 145
Decimal	12359825
CIELab	65.90, 12.33, 8.75
CIELCh	66, 15.120, 35.363
Yxy	35.1922, 0.3569, 0.3387
Android (android.graphics.Color)	4290549905 (0xFFBC9891)
YUV	161.9660, -8.3642, 22.8318
Hunter-Lab	59.3230, 7.7509, 9.9171

Details

The XYZ color **37.0781, 35.1922, 31.6266** is a light color, and the websafe version is hex **CC9999**. A complement of this color would be **37.2776, 42.6971, 53.8537**, and the grayscale version is **34.3577, 36.1470, 39.3640**.

A 20% lighter version of the original color is **70.0363, 67.6786, 63.4048**, and **16.5508, 15.2019, 12.8884** is the 20% darker color. If you saturate the color by 10%, you get **33.3598, 29.8866, 23.8172**, and if you desaturate by 10%, it is **41.3772, 41.2749, 40.8139**.

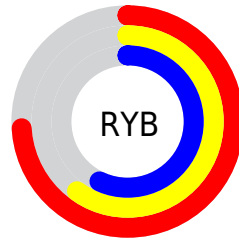
Distribution



Red (74%)

Green (60%)

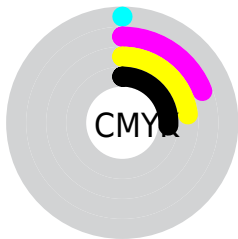
Blue (57%)



Red (74%)

Yellow (60%)

Blue (57%)

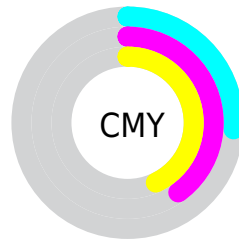


Cyan (0%)

Magenta (19%)

Yellow (23%)

Black (26%)



Cyan (26%)

Magenta (40%)


Yellow (43%)

Brightness & Saturation Gradients


These gradients show how the XYZ color 37.0781, 35.1922, 31.6266 changes by changing the brightness by 10 percent. The first figure shows a shift by +10% for each color and the second figure -10%.


Similar to the brightness gradients but the following saturation gradients show a change of the XYZ color 37.0781, 35.1922, 31.6266 by changing the saturation by 10% instead.


 37.0781, 35.1922,
31.6266


 37.0781, 35.1922,
31.6266


324.9982,
325.4159, 323.8549

 25.4419, 23.8110,
20.8140

 70.0059, 67.7834,
63.3163

 16.5371, 15.1935,
12.7982


 92.0283, 89.7622,
85.0306

 9.9983, 8.9553,
7.1606


118.2434,
116.0422, 111.2158

 5.4601, 4.7120,
3.4828

149.0167,
147.0080, 142.2904

 2.5571, 2.0793,
1.3461

184.7135,
183.0438, 178.6731

 0.9242, 0.6529,
0.0992

225.6991,

 0.0000, 0.0000,

224.5342, 220.7824

0.0000

272.3389,
271.8634, 269.0368

■ 37.0781, 35.1922,
31.6266

■ 37.0781, 35.1922,
31.6266

■ 33.3598, 29.8866,
23.8172

■ 41.3772, 41.2749,
40.8139

■ 30.1944, 25.3220,
17.3170

■ 46.2777, 48.1593,
51.4390

■ 27.5559, 21.4666,
12.0547

■ 51.8027, 55.8748,
63.5607

■ 25.4151, 18.2847,
7.9513

■ 57.9734, 64.4480,
77.2342

■ 23.7400, 15.7371,
4.9184

■ 64.8097, 73.9043,
92.5115

■ 22.4944, 13.7805,
2.8552

■ 71.8765, 84.0861,
107.0497

■ 21.6367, 12.3661,
1.6410

■ 74.5491, 89.4314,
107.9406

■ 21.2193, 11.6517,
1.1306

Harmonies

Analogous

The Analogous color harmony consists of three colors that are next to each other on the color wheel.



37.9135, 35.1922, 37.1793



37.0781, 35.1922, 31.6266



35.2731, 35.1922, 28.1832

Triad

The Triadic color harmony groups three colors that are evenly spaced from another and form a triangle on the color wheel.



37.0781, 35.1922, 31.6266



29.6924, 35.1922, 33.4125



33.8525, 35.1922, 51.9269

Complementary

The Complementary color scheme is a pair of colors which are on the opposite of each other on the color wheel.



37.0781, 35.1922, 31.6266



37.2776, 42.6971, 53.8537

Split Complementary

Split-complementary colors differ from the complementary color scheme. The scheme consists of three colors, the original color and two neighbors of the complement color.



31.6892, 35.1922, 50.6315



37.0781, 35.1922, 31.6266



29.3497, 35.1922, 39.4803

Square

The Square scheme is like the rectangle color scheme, but the four colors are evenly spaced on the color wheel.



37.0781, 35.1922, 31.6266



31.0228, 35.1922, 29.1310



30.0650, 35.1922, 45.8931



35.9988, 35.1922, 49.2588

Rectangle

The Rectangle color scheme consists of four colors that form a rectangle on the color wheel.



37.0781, 35.1922, 31.6266



33.7978, 35.1922, 27.3121



30.0650, 35.1922, 45.8931



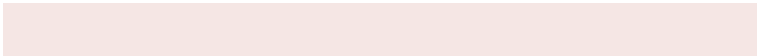
33.1028, 35.1922, 51.9435

Sweetspot

The Sweet Spot groups the original color and five complimentary colors.



37.0791, 35.1938, 31.6273



79.9671, 81.8066, 84.7300



39.2618, 34.3014, 48.5643



17.0816, 17.4307, 17.9715



90.7827, 95.5105, 104.0109



18.6292, 19.5994, 21.3438

Same Dimension

The Same Dimension uses a secret algorithm to generate beautiful new colors.



37.0791, 35.1938, 31.6273



63.9920, 59.2168, 50.5483



40.7841, 42.6040, 32.8624



9.6524, 9.7807, 9.9558



14.4841, 8.0071, 0.7821



0.6072, 0.3933, 0.0439

Inverse Universe

The Inverse Universe completely reimagines the original color for something new.



37.2776, 42.6971, 53.8537



64.4055, 74.9940, 97.3070



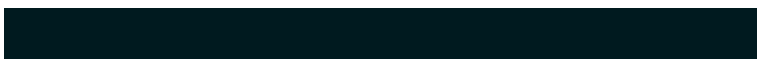
33.3340, 34.8099, 52.5392



9.6727, 10.5377, 12.1964



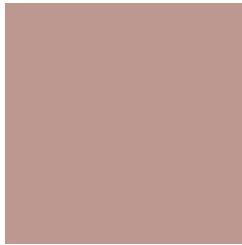
14.4788, 19.0693, 35.3105



0.6030, 0.8187, 1.3951

Previews

White Background



This preview shows how the XYZ color 37.0781, 35.1922, 31.6266 looks on a white background.

Color Contrast Check

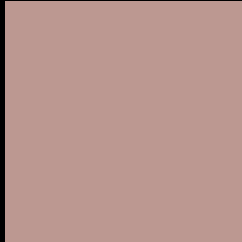
Large Text (above 18pt) WCAG AA × Fail

Any Text WCAG AA × Fail

Large Text (above 18pt) WCAG AAA × Fail

Any Text WCAG AAA × Fail

Black Background



This preview shows how the XYZ color 37.0781, 35.1922, 31.6266 looks on a black background.

Color Contrast Check

Large Text (above 18pt) WCAG AA ✓ Pass

Any Text WCAG AA ✓ Pass

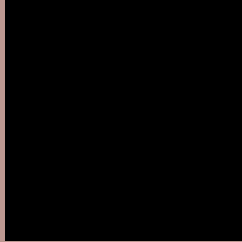
Large Text (above 18pt) WCAG AAA ✓ Pass

Any Text WCAG AAA ✓ Pass

If you want to check with other color combinations, try the [Color Contrast Checker](#).

XYZ 37.0781, 35.1922, 31.6266

Background



This preview shows how black text looks on a background with the XYZ color 37.0781, 35.1922, 31.6266.



This preview shows how white text looks on a background with the XYZ color 37.0781, 35.1922,

Color Blindness Simulation

Color vision deficiency is a very complex topic, and I could not describe the different causes any better than Wikipedia does, so if you want to learn more, you should check out their [article about color blindness](#).

Dichromacy



Original Color

37.0781, 35.1922, 31.6266

Protanopia

33.7215, 35.4185, 33.4929

Deuteranopia

36.1236, 35.4321, 31.7232



Tritanopia

38.5746, 35.3331, 38.5051

Trichromacy



Original Color

37.0781, 35.1922, 31.6266

Protanomaly

34.8578, 35.2507, 32.9838

Deuteranomaly

36.4336, 35.3459, 31.6902

Tritanomaly

37.9693, 35.3186, 35.8263

Monochromacy



Original Color

37.0781, 35.1922, 31.6266

Achromatopsia

34.3422, 36.1307, 39.3463

Achromatomaly

35.0222, 35.5119, 36.4611

CSS Examples

Text

The CSS property to change the color of the text to XYZ 37.0781, 35.1922, 31.6266 is called "color". The color property can be set on classes, ids or directly on the HTML element.

This example shows how text in the color `rgb(188, 152, 145)` looks like.

```
.text, #text, p{  
    color:rgb(188, 152, 145)  
}
```

If you want to add a text shadow in that color use the text-shadow property, you can generate a text shadow directly with our [CSS Text Shadow Generator](#).

Here you see how black text with a 4 pixel rgb(188, 152, 145) colored shadow looks like.

```
.shadow{ text-shadow: 4px 4px 2px rgb(188, 152, 145) }
```

Border

The CSS property to change the border of an element to XYZ 37.0781, 35.1922, 31.6266 is called "border". The border property can be set on classes, ids or directly on the HTML element.

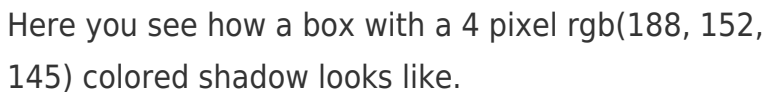
This example shows the color as border, it can be applied via the CSS property "border" or "border-color".

```
.border, #border, table{ border:4px solid rgb(188, 152, 145) }
```


If only the border color should be changed use the property `border-color`.

```
.border{ border-color:rgb(188, 152, 145) }
```

If you want to add a box shadow in that color use:



Here you see how a box with a 4 pixel `rgb(188, 152, 145)` colored shadow looks like.

```
.boxshadow{ -moz-box-shadow:4px 4px 4px 4px rgb(188, 152, 145); -webkit-box-shadow:4px 4px 4px 4px rgb(188, 152, 145); box-shadow:4px 4px 4px 4px rgb(188, 152, 145) }
```

Background

The CSS property to change the background color of an element to XYZ 37.0781, 35.1922, 31.6266 is called "background". The background property can be set on classes, ids or directly on the HTML element.

```
.background, #background, body{  
background: rgb(188, 152, 145) }
```

If only the background color should be changed can be used:

```
.background{ background-color: rgb(188,  
152, 145) }
```

This example shows the color as background, it is applied via the CSS property "background".

To optimize and compress your CSS code, you can use our [online CSS compressor and optimizer](#) based on csstidy. If you want to create a linear or radial gradient as background or border, check our [CSS Gradient Generator](#).

Hey! You found this booklet interesting? Support Converting Colors with the new Membership Option!

The pro membership hides all ads, plus gives you double the colors in the color bucket, and more awesome pro features!

[Learn more, Memberships starting at \\$2.50/m!](#)

**Follow me
on Twitter!**

@ConvertingColor