

Converting Colors

XYZ(37.1530, 37.2129, 44.3544)

Have a look what the booklet for
XYZ(37.1530, 37.2129, 44.3544)
contains.

XYZ(37.2045, 37.2390, 44.2567)	3
<i>Conversions</i>	4
<i>Details</i>	6
<i>Harmonies</i>	12
<i>Previews</i>	24
<i>Color Blindness Simulation</i>	28
<i>CSS Examples</i>	31

Color

**XYZ(37.2045, 37.2390,
44.2567)**

Conversions

Conversions Part 1

Format	Color
Hex	ACA1AC
RGB	172, 161, 172
RGB Percent	67%, 63%, 67%
CMY	0.3255, 0.3686, 0.3255
CMYK	0.00, 0.06, 0.00, 0.33
HSL	300°, 6%, 65%
HSV	300°, 6%, 67%
XYZ	37.2045, 37.2390, 44.2567
YIQ	165.5430, 3.0250, 5.7530

Conversions

Conversions Part 2

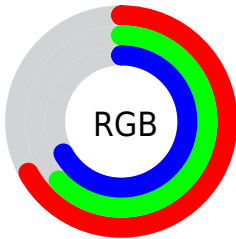
Format	Color
RYB	172, 161, 172
Decimal	11313580
CIELab	67.46, 6.03, -4.26
CIELCh	67, 7.384, 324.755
Yxy	37.2390, 0.3134, 0.3137
Android (android.graphics.Color)	4289503660 (0xFFACA1AC)
YUV	165.5430, 3.1833, 5.6628
Hunter-Lab	61.0238, 2.0349, -0.2827

Details

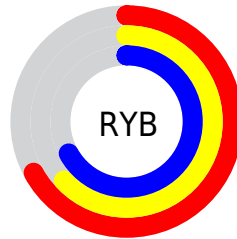
The XYZ color **37.2045, 37.2390, 44.2567** is a light color, and the websafe version is hex **999999**. A complement of this color would be **35.8850, 39.6564, 39.4833**, and the grayscale version is **36.0101, 37.8855, 41.2573**.

A 20% lighter version of the original color is **70.0995, 70.9887, 82.6806**, and **16.6045, 16.2864, 20.0377** is the 20% darker color. If you saturate the color by 10%, you get **34.4035, 31.6366, 43.3235**, and if you desaturate by 10%, it is **40.4211, 43.6716, 45.3293**.

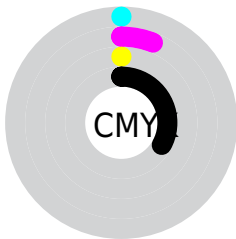
Distribution



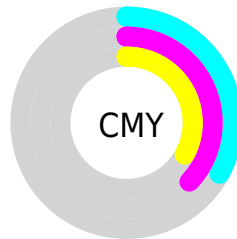
- Red (67%)
- Green (63%)
- Blue (67%)



- Red (67%)
- Yellow (63%)
- Blue (67%)



- Cyan (0%)
- Magenta (6%)
- Yellow (0%)
- Black (33%)



- Cyan (33%)
- Magenta (37%)
- Yellow (33%)

Brightness & Saturation Gradients

These gradients show how the XYZ color 37.2045, 37.2390, 44.2567 changes by changing the brightness by 10 percent. The first figure shows a shift by +10% for each color and the second figure -10%.

Similar to the brightness gradients but the following saturation gradients show a change of the XYZ color 37.2045, 37.2390, 44.2567 by changing the saturation by 10% instead.

■ 37.2045, 37.2390,
44.2567

■ 37.2045, 37.2390,
44.2567

325.5352,
334.3441, 379.8267

■ 25.5403, 25.3926,
30.5337

■ 70.1990, 70.9402,
82.9105

■ 16.6109, 16.3698,
19.9885

■ 92.2599, 93.5638,
108.6783

■ 10.0510, 9.7862,
12.2027

118.5172,
120.5486, 139.2982

■ 5.4953, 5.2574,
6.7577

149.3361,
152.2790, 175.1886

■ 2.5784, 2.3991,
3.2349

185.0820,
189.1393, 216.7681

■ 0.9350, 0.8254,
1.2158

226.1202,

■ 0.0000, 0.0000,

231.5140, 264.4553

0.0000

272.8162,
279.7875, 318.6687

■ 37.2045, 37.2390,
44.2567

■ 37.2045, 37.2390,
44.2567

■ 34.4035, 31.6366,
43.3235

■ 40.4211, 43.6716,
45.3293

■ 31.9981, 26.8259,
42.5217

■ 44.0660, 50.9612,
46.5443

■ 29.9715, 22.7729,
41.8462

■ 48.1552, 59.1394,
47.9073

■ 28.3044, 19.4388,
41.2906

■ 52.7028, 68.2346,
49.4232

■ 26.9758, 16.7818,
40.8477

■ 57.7227, 78.2741,
51.0964

■ 25.9626, 14.7554,
40.5100

■ 60.2205, 83.2696,
51.9290

■ 25.2386, 13.3076,
40.2687

■ 60.2206, 83.2697,
51.9290

■ 24.7737, 12.3779,
40.1138

■ 60.2207, 83.2697,
51.9290

■ 24.5264, 11.8836,
40.0314

■ 60.2208, 83.2698,
51.9290

Harmonies

Analogous

The Analogous color harmony consists of three colors that are next to each other on the color wheel.



36.3150, 37.2390, 46.4834



37.2045, 37.2390, 44.2567



37.6096, 37.2390, 41.1203

Triad

The Triadic color harmony groups three colors that are evenly spaced from another and form a triangle on the color wheel.



37.2045, 37.2390, 44.2567



35.5942, 37.2390, 34.6434



33.4520, 37.2390, 43.2172

Complementary

The Complementary color scheme is a pair of colors which are on the opposite of each other on the color wheel.



37.2045, 37.2390, 44.2567



35.8850, 39.6564, 39.4833

Split Complementary

Split-complementary colors differ from the complementary color scheme. The scheme consists of three colors, the original color and two neighbors of the complement color.



33.2683, 37.2390, 39.9790



37.2045, 37.2390, 44.2567



34.4898, 37.2390, 35.1387

Square

The Square scheme is like the rectangle color scheme, but the four colors are evenly spaced on the color wheel.



37.2045, 37.2390, 44.2567



36.6672, 37.2390, 35.6600



33.6443, 37.2390, 37.0505



34.1517, 37.2390, 45.8612

Rectangle

The Rectangle color scheme consists of four colors that form a rectangle on the color wheel.



37.2045, 37.2390, 44.2567



37.5443, 37.2390, 38.9780



33.6443, 37.2390, 37.0505



33.3285, 37.2390, 42.1575

Sweetspot

The Sweet Spot groups the original color and five complimentary colors.



37.2056, 37.2406, 44.2575



69.9435, 72.4550, 81.1046



34.9230, 36.1115, 44.1599



15.2145, 15.7746, 17.6306



82.5889, 86.8899, 94.6231



15.4596, 16.2647, 17.7123

Same Dimension

The Same Dimension uses a secret algorithm to generate beautiful new colors.



37.2056, 37.2406, 44.2575



66.5527, 65.6734, 79.9743



36.7052, 37.0405, 41.6222



8.3371, 8.1481, 10.0860



18.2013, 8.7430, 29.7728



0.5063, 0.2432, 0.8282

Inverse Universe

The Inverse Universe completely reimagines the original color for something new.



36.1926, 36.8354, 38.9227



64.2391, 64.7480, 67.7904



36.3638, 39.8479, 42.0051



8.0053, 8.0154, 8.3386



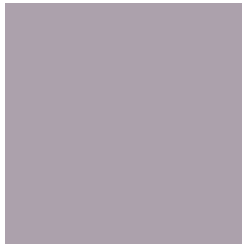
12.6607, 6.5268, 0.5926



0.3522, 0.1816, 0.0165

Previews

White Background



This preview shows how the XYZ color 37.2045, 37.2390, 44.2567 looks on a white background.

Color Contrast Check

Large Text (above 18pt) WCAG AA × Fail

Any Text WCAG AA × Fail

Large Text (above 18pt) WCAG AAA × Fail

Any Text WCAG AAA × Fail

Black Background



This preview shows how the XYZ color 37.2045, 37.2390, 44.2567 looks on a black background.

Color Contrast Check

Large Text (above 18pt) WCAG AA ✓ Pass

Any Text WCAG AA ✓ Pass

Large Text (above 18pt) WCAG AAA ✓ Pass

Any Text WCAG AAA ✓ Pass

If you want to check with other color combinations, try the [Color Contrast Checker](#).

XYZ 37.2045, 37.2390, 44.2567

Background



This preview shows how black text looks on a background with the XYZ color 37.2045, 37.2390, 44.2567.



This preview shows how white text looks on a background with the XYZ color 37.2045, 37.2390,

Color Blindness Simulation

Color vision deficiency is a very complex topic, and I could not describe the different causes any better than Wikipedia does, so if you want to learn more, you should check out their [article about color blindness](#).

Dichromacy



Original Color

37.2045, 37.2390, 44.2567

Protanopia

36.1571, 37.2108, 44.8119

Deuteranopia

37.9760, 37.1219, 44.1934



Tritanopia

37.3010, 37.2775, 44.7645

Trichromacy



Original Color

37.2045, 37.2390, 44.2567

Protanomaly

36.6116, 37.1826, 44.7825

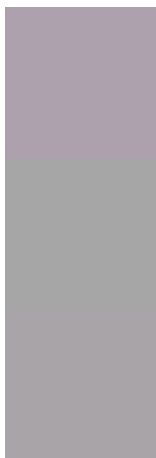
Deuteranomaly

37.6964, 37.2341, 44.2298

Tritanomaly

37.3010, 37.2775, 44.7645

Monochromacy



Original Color

37.2045, 37.2390, 44.2567

Achromatopsia

36.2450, 38.1326, 41.5264

Achromatomaly

36.4918, 37.7029, 42.3999

CSS Examples

Text

The CSS property to change the color of the text to XYZ 37.2045, 37.2390, 44.2567 is called "color". The color property can be set on classes, ids or directly on the HTML element.

This example shows how text in the color `rgb(172, 161, 172)` looks like.

```
.text, #text, p{  
    color:rgb(172, 161, 172)  
}
```

If you want to add a text shadow in that color use the text-shadow property, you can generate a text shadow directly with our [CSS Text Shadow Generator](#).

Here you see how black text with a 4 pixel rgb(172, 161, 172) colored shadow looks like.

```
.shadow{ text-shadow: 4px 4px 2px rgb(172, 161, 172) }
```

Border

The CSS property to change the border of an element to XYZ 37.2045, 37.2390, 44.2567 is called "border". The border property can be set on classes, ids or directly on the HTML element.

This example shows the color as border, it can be applied via the CSS property "border" or "border-color".

```
.border, #border, table{ border:4px solid rgb(172, 161, 172) }
```


If only the border color should be changed use the property `border-color`.

```
.border{ border-color:rgb(172, 161, 172) }
```

If you want to add a box shadow in that color use:

Here you see how a box with a 4 pixel `rgb(172, 161, 172)` colored shadow looks like.

```
.boxshadow{ -moz-box-shadow:4px 4px 4px  
4px rgb(172, 161, 172); -webkit-box-  
shadow:4px 4px 4px 4px rgb(172, 161, 172);  
box-shadow:4px 4px 4px 4px rgb(172, 161,  
172) }
```

Background

The CSS property to change the background color of an element to XYZ 37.2045, 37.2390, 44.2567 is called "background". The background property can be set on classes, ids or directly on the HTML element.

```
.background, #background, body{  
background: rgb(172, 161, 172) }
```

If only the background color should be changed can be used:

```
.background{ background-color: rgb(172,  
161, 172) }
```

This example shows the color as background, it is applied via the CSS property "background".

To optimize and compress your CSS code, you can use our [online CSS compressor and optimizer](#) based on csstidy. If you want to create a linear or radial gradient as background or border, check our [CSS Gradient Generator](#).

Hey! You found this booklet interesting? Support Converting Colors with the new Membership Option!

The pro membership hides all ads, plus gives you double the colors in the color bucket, and more awesome pro features!

[Learn more, Memberships starting at \\$2.50/m!](#)

**Follow me
on Twitter!**

@ConvertingColor