

Converting Colors

XYZ(37.1775, 37.3435, 38.9697)

Have a look what the booklet for
XYZ(37.1775, 37.3435, 38.9697)
contains.

XYZ(37.0824, 37.2931, 38.9620)	3
<i>Conversions</i>	4
<i>Details</i>	6
<i>Harmonies</i>	12
<i>Previews</i>	24
<i>Color Blindness Simulation</i>	28
<i>CSS Examples</i>	31

Color

**XYZ(37.0824, 37.2931,
38.9620)**

Conversions

Conversions Part 1

Format	Color
Hex	B0A1A1
RGB	176, 161, 161
RGB Percent	69%, 63%, 63%
CMY	0.3098, 0.3686, 0.3686
CMYK	0.00, 0.09, 0.09, 0.31
HSL	0°, 9%, 66%
HSV	0°, 9%, 69%
XYZ	37.0824, 37.2931, 38.9620
YIQ	165.4850, 8.9400, 3.1800

Conversions

Conversions Part 2

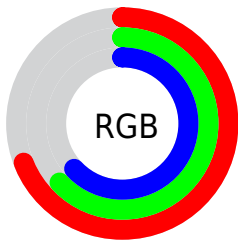
Format	Color
RYB	176, 161, 161
Decimal	11575713
CIELab	67.50, 5.46, 1.97
CIELCh	67, 5.800, 19.850
Yxy	37.2931, 0.3272, 0.3290
Android (android.graphics.Color)	4289765793 (0xFFB0A1A1)
YUV	165.4850, -2.2111, 9.2217
Hunter-Lab	61.0681, 1.5215, 4.9201

Details

The XYZ color **37.0824, 37.2931, 38.9620** is a light color, and the websafe version is hex **999999**. A complement of this color would be **38.0595, 41.7615, 47.1295**, and the grayscale version is **36.0053, 37.8804, 41.2518**.

A 20% lighter version of the original color is **70.2292, 71.2254, 75.0121**, and **16.4515, 16.2740, 17.0260** is the 20% darker color. If you saturate the color by 10%, you get **32.7769, 30.9933, 30.4009**, and if you desaturate by 10%, it is **42.0412, 44.5491, 48.8196**.

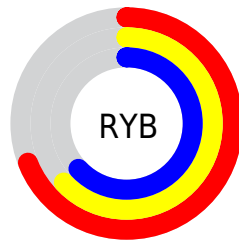
Distribution



Red (69%)

Green (63%)

Blue (63%)



Red (69%)

Yellow (63%)

Blue (63%)

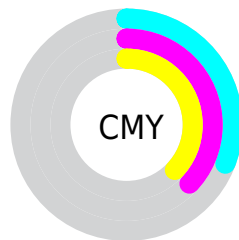


Cyan (0%)

Magenta (9%)

Yellow (9%)

Black (31%)



Cyan (31%)

Magenta (37%)

Yellow (37%)

Brightness & Saturation Gradients

These gradients show how the XYZ color 37.0824, 37.2931, 38.9620 changes by changing the brightness by 10 percent. The first figure shows a shift by +10% for each color and the second figure -10%.

Similar to the brightness gradients but the following saturation gradients show a change of the XYZ color 37.0824, 37.2931, 38.9620 by changing the saturation by 10% instead.

■ 37.0824, 37.2931,
38.9620

■ 37.0824, 37.2931,
38.9620

325.0165,
334.5777, 357.1500

■ 25.4453, 25.4345,
26.4226

■ 70.0125, 71.0233,
74.8000

■ 16.5396, 16.4011,
16.9114

■ 92.0362, 93.6638,
98.9356

■ 10.0000, 9.8084,
10.0101

118.2528,
120.6670, 127.7737

■ 5.4613, 5.2721,
5.2999

149.0276,
152.4173, 161.7327

■ 2.5579, 2.4078,
2.3625

184.7260,
189.2991, 201.2314

■ 0.9245, 0.8299,
0.7659

225.7134,

■ 0.0000, 0.0000,

231.6969, 246.6881

0.0000

272.3551,
279.9950, 298.5215

■ 37.0824, 37.2931,
38.9620

■ 37.0824, 37.2931,
38.9620

■ 32.7769, 30.9933,
30.4009

■ 42.0412, 44.5491,
48.8196

■ 29.0946, 25.6051,
23.0802

■ 47.6757, 52.7935,
60.0221

■ 26.0075, 21.0880,
16.9431

■ 54.0111, 62.0634,
72.6181

■ 23.4845, 17.3960,
11.9275

■ 61.0702, 72.3922,
86.6532

■ 21.4914, 14.4795,
7.9655

■ 68.8749, 83.8120,
102.1710

■ 19.9905, 12.2831,
4.9822

■ 71.7147, 87.9702,
107.8079

■ 18.9391, 10.7443,
2.8926

■ 18.2871, 9.7901,
1.5971

■ 17.9476, 9.2932,
0.9225

Harmonies

Analogous

The Analogous color harmony consists of three colors that are next to each other on the color wheel.



37.1597, 37.2931, 41.4769



37.0824, 37.2931, 38.9620



36.5625, 37.2931, 36.9688

Triad

The Triadic color harmony groups three colors that are evenly spaced from another and form a triangle on the color wheel.



37.0824, 37.2931, 38.9620



34.1522, 37.2931, 37.5228



35.1448, 37.2931, 45.6311

Complementary

The Complementary color scheme is a pair of colors which are on the opposite of each other on the color wheel.



37.0824, 37.2931, 38.9620



38.0595, 41.7615, 47.1295

Split Complementary

Split-complementary colors differ from the complementary color scheme. The scheme consists of three colors, the original color and two neighbors of the complement color.



34.3524, 37.2931, 44.4740



37.0824, 37.2931, 38.9620



33.7857, 37.2931, 39.7471

Square

The Square scheme is like the rectangle color scheme, but the four colors are evenly spaced on the color wheel.



37.0824, 37.2931, 38.9620



34.8672, 37.2931, 36.1623



33.8584, 37.2931, 42.2953



36.0311, 37.2931, 45.3993

Rectangle

The Rectangle color scheme consists of four colors that form a rectangle on the color wheel.



37.0824, 37.2931, 38.9620



36.0396, 37.2931, 36.1704



33.8584, 37.2931, 42.2953



34.8589, 37.2931, 45.3898

Sweetspot

The Sweet Spot groups the original color and five complimentary colors.



37.0834, 37.2947, 38.9628



72.0256, 74.6180, 80.1468



38.4863, 37.8549, 46.3530



15.4539, 15.9438, 17.0605



84.5950, 89.0005, 96.9216



16.2198, 17.0645, 18.5832

Same Dimension

The Same Dimension uses a secret algorithm to generate beautiful new colors.



37.0834, 37.2947, 38.9628



65.8856, 65.6338, 67.9395



38.4331, 39.9940, 39.4127



8.4965, 8.5056, 8.8465



13.1372, 6.7731, 0.6149



0.4134, 0.2132, 0.0194

Inverse Universe

The Inverse Universe completely reimagines the original color for something new.



38.0595, 41.7615, 47.1295



67.9758, 75.1986, 85.4274



36.6300, 38.9024, 46.6530



8.7425, 9.6312, 10.9046



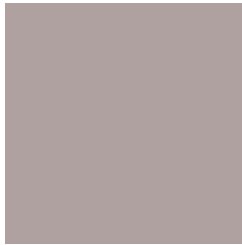
17.1354, 25.0711, 34.0731



0.5392, 0.7889, 1.0721

Previews

White Background



This preview shows how the XYZ color 37.0824, 37.2931, 38.9620 looks on a white background.

Color Contrast Check

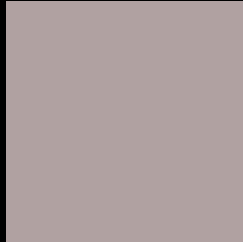
Large Text (above 18pt) WCAG AA × Fail

Any Text WCAG AA × Fail

Large Text (above 18pt) WCAG AAA × Fail

Any Text WCAG AAA × Fail

Black Background



This preview shows how the XYZ color 37.0824, 37.2931, 38.9620 looks on a black background.

Color Contrast Check

Large Text (above 18pt) WCAG AA ✓ Pass

Any Text WCAG AA ✓ Pass

Large Text (above 18pt) WCAG AAA ✓ Pass

Any Text WCAG AAA ✓ Pass

If you want to check with other color combinations, try the [Color Contrast Checker](#).

XYZ 37.0824, 37.2931, 38.9620

Background



This preview shows how black text looks on a background with the XYZ color 37.0824, 37.2931, 38.9620.



This preview shows how white text looks on a background with the XYZ color 37.0824, 37.2931,

Color Blindness Simulation

Color vision deficiency is a very complex topic, and I could not describe the different causes any better than Wikipedia does, so if you want to learn more, you should check out their [article about color blindness](#).

Dichromacy



Original Color

37.0824, 37.2931, 38.9620

Protanopia

35.9455, 37.4844, 39.5231

Deuteranopia

37.8872, 37.1932, 38.9004



Tritanopia

38.2046, 37.2398, 44.2041

Trichromacy



Original Color

37.0824, 37.2931, 38.9620

Protanomaly

36.4134, 37.4609, 39.4939

Deuteranomaly

37.5942, 37.2985, 38.9361

Tritanomaly

37.7702, 37.3159, 42.2578

Monochromacy



Original Color

37.0824, 37.2931, 38.9620

Achromatopsia

35.7637, 37.6262, 40.9749

Achromatomaly

36.3385, 37.6663, 40.4770

CSS Examples

Text

The CSS property to change the color of the text to XYZ 37.0824, 37.2931, 38.9620 is called "color". The color property can be set on classes, ids or directly on the HTML element.

This example shows how text in the color `rgb(176, 161, 161)` looks like.

```
.text, #text, p{  
    color:rgb(176, 161, 161)  
}
```

If you want to add a text shadow in that color use the text-shadow property, you can generate a text shadow directly with our [CSS Text Shadow Generator](#).

Here you see how black text with a 4 pixel rgb(176, 161, 161) colored shadow looks like.

```
.shadow{ text-shadow: 4px 4px 2px rgb(176, 161, 161) }
```

Border

The CSS property to change the border of an element to XYZ 37.0824, 37.2931, 38.9620 is called "border". The border property can be set on classes, ids or directly on the HTML element.

This example shows the color as border, it can be applied via the CSS property "border" or "border-color".

```
.border, #border, table{ border:4px solid rgb(176, 161, 161) }
```


If only the border color should be changed use the property `border-color`.

```
.border{ border-color:rgb(176, 161, 161) }
```

If you want to add a box shadow in that color use:

Here you see how a box with a 4 pixel `rgb(176, 161, 161)` colored shadow looks like.

```
.boxshadow{ -moz-box-shadow:4px 4px 4px  
4px rgb(176, 161, 161); -webkit-box-  
shadow:4px 4px 4px 4px rgb(176, 161, 161);  
box-shadow:4px 4px 4px 4px rgb(176, 161,  
161) }
```

Background

The CSS property to change the background color of an element to XYZ 37.0824, 37.2931, 38.9620 is called "background". The background property can be set on classes, ids or directly on the HTML element.

```
.background, #background, body{  
background: rgb(176, 161, 161) }
```

If only the background color should be changed can be used:

```
.background{ background-color: rgb(176,  
161, 161) }
```

This example shows the color as background, it is applied via the CSS property "background".

To optimize and compress your CSS code, you can use our [online CSS compressor and optimizer](#) based on csstidy. If you want to create a linear or radial gradient as background or border, check our [CSS Gradient Generator](#).

Hey! You found this booklet interesting? Support Converting Colors with the new Membership Option!

The pro membership hides all ads, plus gives you double the colors in the color bucket, and more awesome pro features!

[Learn more, Memberships starting at \\$2.50/m!](#)

**Follow me
on Twitter!**

@ConvertingColor