

Converting Colors

XYZ(37.1849, 37.0673, 39.5654)

Have a look what the booklet for
XYZ(37.1849, 37.0673, 39.5654)
contains.

XYZ(37.2239, 37.0974, 39.3810)	3
<i>Conversions</i>	4
<i>Details</i>	6
<i>Harmonies</i>	12
<i>Previews</i>	24
<i>Color Blindness Simulation</i>	28
<i>CSS Examples</i>	31

Color

**XYZ(37.2239, 37.0974,
39.3810)**

Conversions

Conversions Part 1

Format	Color
Hex	B1A0A2
RGB	177, 160, 162
RGB Percent	69%, 63%, 64%
CMY	0.3059, 0.3725, 0.3647
CMYK	0.00, 0.10, 0.08, 0.31
HSL	353°, 10%, 66%
HSV	353°, 10%, 69%
XYZ	37.2239, 37.0974, 39.3810
YIQ	165.3110, 9.4900, 4.2260

Conversions

Conversions Part 2

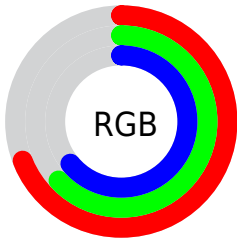
Format	Color
RYB	177, 160, 162
Decimal	11640994
CIELab	67.35, 6.55, 1.21
CIELCh	67, 6.661, 10.466
Yxy	37.0974, 0.3274, 0.3263
Android (android.graphics.Color)	4289831074 (0xFFB1A0A2)
YUV	165.3110, -1.6323, 10.2513
Hunter-Lab	60.9076, 2.5025, 4.3003

Details

The XYZ color **37.2239, 37.0974, 39.3810** is a light color, and the websafe version is hex **999999**. A complement of this color would be **37.9587, 42.0140, 46.6685**, and the grayscale version is **35.9188, 37.7893, 41.1526**.

A 20% lighter version of the original color is **70.4291, 70.9343, 75.6253**, and **16.5953, 16.3482, 17.0327** is the 20% darker color. If you saturate the color by 10%, you get **33.0680, 30.8711, 31.5654**, and if you desaturate by 10%, it is **41.9913, 44.2697, 48.2524**.

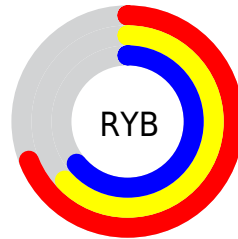
Distribution



Red (69%)

Green (63%)

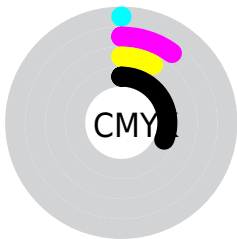
Blue (64%)



Red (69%)

Yellow (63%)

Blue (64%)

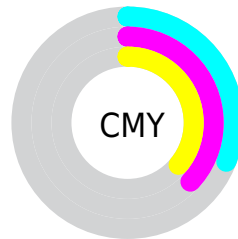


Cyan (0%)

Magenta (10%)

Yellow (8%)

Black (31%)



Cyan (31%)

Magenta (37%)

Yellow (36%)

Brightness & Saturation Gradients

These gradients show how the XYZ color 37.2239, 37.0974, 39.3810 changes by changing the brightness by 10 percent. The first figure shows a shift by +10% for each color and the second figure -10%.

Similar to the brightness gradients but the following saturation gradients show a change of the XYZ color 37.2239, 37.0974, 39.3810 by changing the saturation by 10% instead.

■ 37.2239, 37.0974,
39.3810

■ 37.2239, 37.0974,
39.3810

325.6176,
333.7320, 358.9818

■ 25.5554, 25.2829,
26.7461

■ 70.2286, 70.7226,
75.4467

■ 16.6222, 16.2880,
17.1519

■ 92.2955, 93.3020,
99.7147

■ 10.0592, 9.7282,
10.1798

118.5592,
120.2386, 128.6974

■ 5.5008, 5.2191,
5.4111

149.3851,
151.9167, 162.8135

■ 2.5817, 2.3764,
2.4275

185.1385,
188.7207, 202.4815

■ 0.9366, 0.8137,
0.8014

226.1848,

■ 0.0000, 0.0000,

231.0350, 248.1198

0.0000

272.8894,
279.2439, 300.1471

■ 37.2239, 37.0974,
39.3810

■ 37.2239, 37.0974,
39.3810

■ 33.0680, 30.8711,
31.5654

■ 41.9913, 44.2697,
48.2524

■ 29.4958, 25.5466,
24.7638

■ 47.3903, 52.4201,
58.2144

■ 26.4819, 21.0836,
18.9354

■ 53.4440, 61.5851,
69.3032

■ 23.9981, 17.4368,
14.0355

■ 60.1733, 71.7980,
81.5526

■ 22.0133, 14.5566,
10.0159

■ 67.5983, 83.0904,
94.9949

■ 20.4936, 12.3881,
6.8242

■ 71.9417, 88.0872,
107.8185

■ 19.4004, 10.8692,
4.4023

■ 18.6891, 9.9268,
2.6842

■ 18.2786, 9.4182,
1.5843

Harmonies

Analogous

The Analogous color harmony consists of three colors that are next to each other on the color wheel.



37.1408, 37.0974, 42.3000



37.2239, 37.0974, 39.3810



36.7732, 37.0974, 36.8561

Triad

The Triadic color harmony groups three colors that are evenly spaced from another and form a triangle on the color wheel.



37.2239, 37.0974, 39.3810



34.0024, 37.0974, 36.2686



34.6083, 37.0974, 45.9208

Complementary

The Complementary color scheme is a pair of colors which are on the opposite of each other on the color wheel.



37.2239, 37.0974, 39.3810



37.9587, 42.0140, 46.6685

Split Complementary

Split-complementary colors differ from the complementary color scheme. The scheme consists of three colors, the original color and two neighbors of the complement color.



33.7889, 37.0974, 44.1488



37.2239, 37.0974, 39.3810



33.4438, 37.0974, 38.5437

Square

The Square scheme is like the rectangle color scheme, but the four colors are evenly spaced on the color wheel.



37.2239, 37.0974, 39.3810



34.9049, 37.0974, 35.1174



33.3664, 37.0974, 41.4217



35.6174, 37.0974, 46.1716

Rectangle

The Rectangle color scheme consists of four colors that form a rectangle on the color wheel.



37.2239, 37.0974, 39.3810



36.2356, 37.0974, 35.7003



33.3664, 37.0974, 41.4217



34.3020, 37.0974, 45.4794

Sweetspot

The Sweet Spot groups the original color and five complimentary colors.



37.2249, 37.0990, 39.3818



72.1343, 74.6608, 80.7211



38.1272, 37.4008, 46.8051



15.4833, 15.9554, 17.2159



84.5950, 89.0005, 96.9216



16.2198, 17.0645, 18.5832

Same Dimension

The Same Dimension uses a secret algorithm to generate beautiful new colors.



37.2249, 37.0990, 39.3818



64.6271, 63.3799, 66.7086



38.1565, 39.2439, 38.8235



8.5356, 8.5210, 9.0531



13.2458, 6.8159, 1.1886



0.4298, 0.2197, 0.1058

Inverse Universe

The Inverse Universe completely reimagines the original color for something new.



37.2249, 37.0990, 39.3818



64.6271, 63.3799, 66.7086



36.9533, 39.6870, 47.3082



8.5356, 8.5210, 9.0531



13.2458, 6.8159, 1.1886



0.4298, 0.2197, 0.1058

Previews

White Background



This preview shows how the XYZ color 37.2239, 37.0974, 39.3810 looks on a white background.

Color Contrast Check

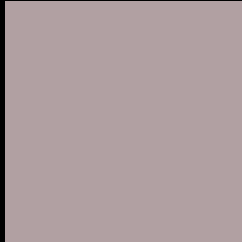
Large Text (above 18pt) WCAG AA × Fail

Any Text WCAG AA × Fail

Large Text (above 18pt) WCAG AAA × Fail

Any Text WCAG AAA × Fail

Black Background



This preview shows how the XYZ color 37.2239, 37.0974, 39.3810 looks on a black background.

Color Contrast Check

Large Text (above 18pt) WCAG AA ✓ Pass

Any Text WCAG AA ✓ Pass

Large Text (above 18pt) WCAG AAA ✓ Pass

Any Text WCAG AAA ✓ Pass

If you want to check with other color combinations, try the [Color Contrast Checker](#).

XYZ 37.2239, 37.0974, 39.3810

Background



This preview shows how black text looks on a background with the XYZ color 37.2239, 37.0974, 39.3810.



This preview shows how white text looks on a background with the XYZ color 37.2239, 37.0974,

Color Blindness Simulation

Color vision deficiency is a very complex topic, and I could not describe the different causes any better than Wikipedia does, so if you want to learn more, you should check out their [article about color blindness](#).

Dichromacy



Original Color

37.2239, 37.0974, 39.3810

Protanopia

35.7344, 37.0902, 40.3977

Deuteranopia

37.7421, 37.1082, 39.3558



Tritanopia

38.1089, 37.2015, 43.7001

Trichromacy



Original Color

37.2239, 37.0974, 39.3810

Protanomaly

36.3258, 37.1429, 39.9051

Deuteranomaly

37.5101, 36.9886, 39.3449

Tritanomaly

37.8261, 37.0884, 42.2109

Monochromacy



Original Color

37.2239, 37.0974, 39.3810

Achromatopsia

35.7637, 37.6262, 40.9749

Achromatomaly

36.1602, 37.3097, 40.4176

CSS Examples

Text

The CSS property to change the color of the text to XYZ 37.2239, 37.0974, 39.3810 is called "color". The color property can be set on classes, ids or directly on the HTML element.

This example shows how text in the color `rgb(177, 160, 162)` looks like.

```
.text, #text, p{  
    color:rgb(177, 160, 162)  
}
```

If you want to add a text shadow in that color use the text-shadow property, you can generate a text shadow directly with our [CSS Text Shadow Generator](#).

Here you see how black text with a 4 pixel rgb(177, 160, 162) colored shadow looks like.

```
.shadow{ text-shadow: 4px 4px 2px rgb(177, 160, 162) }
```

Border

The CSS property to change the border of an element to XYZ 37.2239, 37.0974, 39.3810 is called "border". The border property can be set on classes, ids or directly on the HTML element.

This example shows the color as border, it can be applied via the CSS property "border" or "border-color".

```
.border, #border, table{ border:4px solid rgb(177, 160, 162) }
```


If only the border color should be changed use the property `border-color`.

```
.border{ border-color:rgb(177, 160, 162) }
```

If you want to add a box shadow in that color use:

Here you see how a box with a 4 pixel `rgb(177, 160, 162)` colored shadow looks like.

```
.boxshadow{ -moz-box-shadow:4px 4px 4px  
4px rgb(177, 160, 162); -webkit-box-  
shadow:4px 4px 4px 4px rgb(177, 160, 162);  
box-shadow:4px 4px 4px 4px rgb(177, 160,  
162) }
```

Background

The CSS property to change the background color of an element to XYZ 37.2239, 37.0974, 39.3810 is called "background". The background property can be set on classes, ids or directly on the HTML element.

```
.background, #background, body{  
background: rgb(177, 160, 162) }
```

If only the background color should be changed can be used:

```
.background{ background-color: rgb(177,  
160, 162) }
```

This example shows the color as background, it is applied via the CSS property "background".

To optimize and compress your CSS code, you can use our [online CSS compressor and optimizer](#) based on csstidy. If you want to create a linear or radial gradient as background or border, check our [CSS Gradient Generator](#).

Hey! You found this booklet interesting? Support Converting Colors with the new Membership Option!

The pro membership hides all ads, plus gives you double the colors in the color bucket, and more awesome pro features!

[Learn more, Memberships starting at \\$2.50/m!](#)

**Follow me
on Twitter!**

@ConvertingColor