

Converting Colors

XYZ(37.2051, 35.4016, 35.4386)

Have a look what the booklet for
XYZ(37.2051, 35.4016, 35.4386)
contains.

XYZ(37.2316, 35.4298, 35.4482)	3
<i>Conversions</i>	4
<i>Details</i>	6
<i>Harmonies</i>	12
<i>Previews</i>	24
<i>Color Blindness Simulation</i>	28
<i>CSS Examples</i>	31

Color

**XYZ(37.2316, 35.4298,
35.4482)**

Conversions

Conversions Part 1

Format	Color
Hex	B9999A
RGB	185, 153, 154
RGB Percent	73%, 60%, 60%
CMY	0.2745, 0.4000, 0.3961
CMYK	0.00, 0.17, 0.17, 0.27
HSL	358°, 19%, 66%
HSV	358°, 17%, 73%
XYZ	37.2316, 35.4298, 35.4482
YIQ	162.6820, 18.7510, 7.0950

Conversions

Conversions Part 2

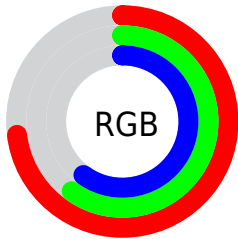
Format	Color
RYB	185, 153, 154
Decimal	12163482
CIELab	66.08, 12.04, 3.93
CIElCh	66, 12.668, 18.094
Yxy	35.4298, 0.3444, 0.3277
Android (android.graphics.Color)	4290353562 (0xFFB9999A)
YUV	162.6820, -4.2802, 19.5729
Hunter-Lab	59.5229, 7.4866, 6.3566

Details

The XYZ color **37.2316, 35.4298, 35.4482** is a light color, and the websafe version is hex **CC9999**. A complement of this color would be **39.1390, 44.9319, 51.9595**, and the grayscale version is **34.6770, 36.4829, 39.7299**.

A 20% lighter version of the original color is **69.9736, 67.8805, 69.0887**, and **16.5596, 15.3073, 14.9138** is the 20% darker color. If you saturate the color by 10%, you get **33.0522, 29.2841, 27.2318**, and if you desaturate by 10%, it is **42.1054, 42.6068, 44.9966**.

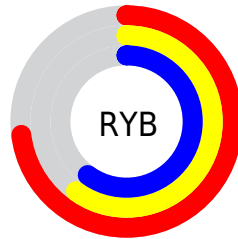
Distribution



Red (73%)

Green (60%)

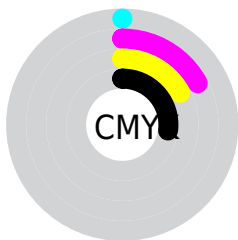
Blue (60%)



Red (73%)

Yellow (60%)

Blue (60%)

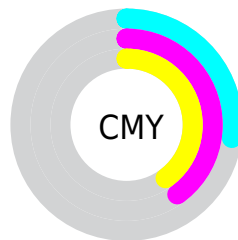


Cyan (0%)

Magenta (17%)

Yellow (17%)

Black (27%)



Cyan (27%)


Magenta (40%)


Yellow (40%)

Brightness & Saturation Gradients


These gradients show how the XYZ color 37.2316, 35.4298, 35.4482 changes by changing the brightness by 10 percent. The first figure shows a shift by +10% for each color and the second figure -10%.


Similar to the brightness gradients but the following saturation gradients show a change of the XYZ color 37.2316, 35.4298, 35.4482 by changing the saturation by 10% instead.

 37.2316, 35.4298,
35.4482


 37.2316, 35.4298,
35.4482


325.6503,
326.4614, 341.5064

 25.5614, 23.9941,
23.7220


 70.2404, 68.1511,
69.3389

 16.6267, 15.3293,
14.9173


 92.3096, 90.2055,
92.3406

 10.0624, 9.0508,
8.6154


118.5759,
116.5682, 119.9378

 5.5029, 4.7743,
4.3978

149.4045,
147.6238, 152.5492

 2.5830, 2.1155,
1.8460

185.1610,
183.7564, 190.5931

 0.9373, 0.6733,
0.4580

226.2105,

 0.0000, 0.0000,

225.3507, 234.4883

0.0000

272.9185,
272.7909, 284.6532

■ 37.2316, 35.4298,
35.4482

■ 37.2316, 35.4298,
35.4482

■ 33.0522, 29.2841,
27.2318

■ 42.1054, 42.6068,
44.9966

■ 29.5328, 24.1178,
20.2862

■ 47.6999, 50.8543,
55.9303

■ 26.6406, 19.8818,
14.5485

■ 54.0441, 60.2154,
68.3020

■ 24.3388, 16.5208,
9.9500

■ 61.1639, 70.7294,
82.1614

■ 22.5865, 13.9737,
6.4145

■ 69.0846, 82.4336,
97.5556

■ 21.3382, 12.1715,
3.8572

■ 73.8178, 89.0544,
107.9064

■ 20.5404, 11.0338,
2.1796

■ 20.1203, 10.4463,
1.2608

■ 20.0394, 10.3270,
1.1026

Harmonies

Analogous

The Analogous color harmony consists of three colors that are next to each other on the color wheel.



37.3398, 35.4298, 40.7538



37.2316, 35.4298, 35.4482



36.1491, 35.4298, 31.3694

Triad

The Triadic color harmony groups three colors that are evenly spaced from another and form a triangle on the color wheel.



37.2316, 35.4298, 35.4482



31.0540, 35.4298, 32.0634



32.9342, 35.4298, 49.6273

Complementary

The Complementary color scheme is a pair of colors which are on the opposite of each other on the color wheel.



37.2316, 35.4298, 35.4482



39.1390, 44.9319, 51.9595

Split Complementary

Split-complementary colors differ from the complementary color scheme. The scheme consists of three colors, the original color and two neighbors of the complement color.



31.3163, 35.4298, 46.8120



37.2316, 35.4298, 35.4482



30.2581, 35.4298, 36.4791

Square

The Square scheme is like the rectangle color scheme, but the four colors are evenly spaced on the color wheel.



37.2316, 35.4298, 35.4482



32.5640, 35.4298, 29.5441



30.3524, 35.4298, 41.8848



34.8109, 35.4298, 49.2856

Rectangle

The Rectangle color scheme consists of four colors that form a rectangle on the color wheel.



37.2316, 35.4298, 35.4482



35.0426, 35.4298, 29.7418



30.3524, 35.4298, 41.8848



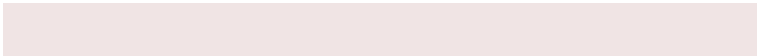
32.3434, 35.4298, 49.0087

Sweetspot

The Sweet Spot groups the original color and five complimentary colors.



37.2326, 35.4314, 35.4489



77.5143, 79.4093, 84.7052



39.9004, 36.4689, 50.8357



16.5661, 16.9063, 17.9784



88.6918, 93.3107, 101.6153



17.8044, 18.7317, 20.3988

Same Dimension

The Same Dimension uses a secret algorithm to generate beautiful new colors.



37.2326, 35.4314, 35.4489



63.5056, 58.7829, 57.2498



39.7488, 40.5961, 35.8797



9.0156, 9.0166, 9.4298



13.6499, 7.0337, 0.7774



0.4850, 0.2495, 0.0477

Inverse Universe

The Inverse Universe completely reimagines the original color for something new.



37.2326, 35.4314, 35.4489



63.5056, 58.7829, 57.2498



36.2824, 39.0509, 51.5248



9.0156, 9.0166, 9.4298



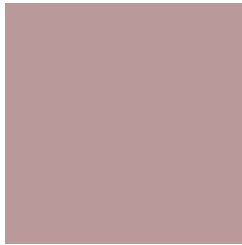
13.6499, 7.0337, 0.7774



0.4850, 0.2495, 0.0477

Previews

White Background



This preview shows how the XYZ color 37.2316, 35.4298, 35.4482 looks on a white background.

Color Contrast Check

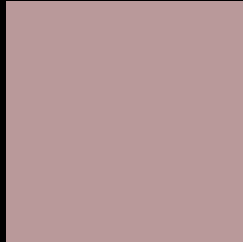
Large Text (above 18pt) WCAG AA × Fail

Any Text WCAG AA × Fail

Large Text (above 18pt) WCAG AAA × Fail

Any Text WCAG AAA × Fail

Black Background



This preview shows how the XYZ color 37.2316, 35.4298, 35.4482 looks on a black background.

Color Contrast Check

Large Text (above 18pt) WCAG AA ✓ Pass

Any Text WCAG AA ✓ Pass

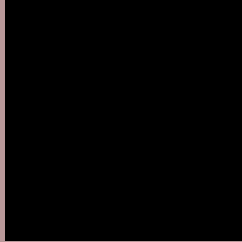
Large Text (above 18pt) WCAG AAA ✓ Pass

Any Text WCAG AAA ✓ Pass

If you want to check with other color combinations, try the [Color Contrast Checker](#).

XYZ 37.2316, 35.4298, 35.4482

Background



This preview shows how black text looks on a background with the XYZ color 37.2316, 35.4298, 35.4482.



This preview shows how white text looks on a background with the XYZ color 37.2316, 35.4298,

35.4482.

Color Blindness Simulation

Color vision deficiency is a very complex topic, and I could not describe the different causes any better than Wikipedia does, so if you want to learn more, you should check out their [article about color blindness](#).

Dichromacy



Original Color

37.2316, 35.4298, 35.4482

Protanopia

34.0522, 35.5027, 37.4057

Deuteranopia

36.1445, 35.3595, 35.4919



Tritanopia

38.0888, 35.5399, 39.5027

Trichromacy



Original Color

37.2316, 35.4298, 35.4482

Protanomaly

35.1560, 35.3189, 36.8626

Deuteranomaly

36.4444, 35.2681, 35.4584

Tritanomaly

37.8231, 35.4336, 38.1036

Monochromacy



Original Color

37.2316, 35.4298, 35.4482

Achromatopsia

34.8123, 36.6253, 39.8849

Achromatomaly

35.5379, 35.9923, 38.3319

CSS Examples

Text

The CSS property to change the color of the text to XYZ 37.2316, 35.4298, 35.4482 is called "color". The color property can be set on classes, ids or directly on the HTML element.

This example shows how text in the color `rgb(185, 153, 154)` looks like.

```
.text, #text, p{  
    color:rgb(185, 153, 154)  
}
```

If you want to add a text shadow in that color use the text-shadow property, you can generate a text shadow directly with our [CSS Text Shadow Generator](#).

Here you see how black text with a 4 pixel rgb(185, 153, 154) colored shadow looks like.

```
.shadow{ text-shadow: 4px 4px 2px rgb(185, 153, 154) }
```

Border

The CSS property to change the border of an element to XYZ 37.2316, 35.4298, 35.4482 is called "border". The border property can be set on classes, ids or directly on the HTML element.

This example shows the color as border, it can be applied via the CSS property "border" or "border-color".

```
.border, #border, table{ border:4px solid rgb(185, 153, 154) }
```


If only the border color should be changed use the property `border-color`.

```
.border{ border-color:rgb(185, 153, 154) }
```

If you want to add a box shadow in that color use:

Here you see how a box with a 4 pixel `rgb(185, 153, 154)` colored shadow looks like.

```
.boxshadow{ -moz-box-shadow:4px 4px 4px  
4px rgb(185, 153, 154); -webkit-box-  
shadow:4px 4px 4px 4px rgb(185, 153, 154);  
box-shadow:4px 4px 4px 4px rgb(185, 153,  
154) }
```

Background

The CSS property to change the background color of an element to XYZ 37.2316, 35.4298, 35.4482 is called "background". The background property can be set on classes, ids or directly on the HTML element.

```
.background, #background, body{  
background: rgb(185, 153, 154) }
```

If only the background color should be changed can be used:

```
.background{ background-color: rgb(185,  
153, 154) }
```

This example shows the color as background, it is applied via the CSS property "background".

To optimize and compress your CSS code, you can use our [online CSS compressor and optimizer](#) based on csstidy. If you want to create a linear or radial gradient as background or border, check our [CSS Gradient Generator](#).

Hey! You found this booklet interesting? Support Converting Colors with the new Membership Option!

The pro membership hides all ads, plus gives you double the colors in the color bucket, and more awesome pro features!

[Learn more, Memberships starting at \\$2.50/m!](#)

**Follow me
on Twitter!**

@ConvertingColor