

Converting Colors

XYZ(37.2884, 33.6272, 32.9592)

Have a look what the booklet for
XYZ(37.2884, 33.6272, 32.9592)
contains.

XYZ(37.2884, 33.6272, 32.9592)	3
<i>Conversions</i>	4
<i>Details</i>	6
<i>Harmonies</i>	12
<i>Previews</i>	24
<i>Color Blindness Simulation</i>	28
<i>CSS Examples</i>	31

Color

**XYZ(37.2884, 33.6272,
32.9592)**

Conversions

Conversions Part 1

Format	Color
Hex	C09195
RGB	192, 145, 149
RGB Percent	75%, 57%, 58%
CMY	0.2471, 0.4314, 0.4157
CMYK	0.00, 0.24, 0.22, 0.25
HSL	355°, 27%, 66%
HSV	355°, 24%, 75%
XYZ	37.2884, 33.6272, 32.9592
YIQ	159.5090, 26.7280, 11.2080

Conversions

Conversions Part 2

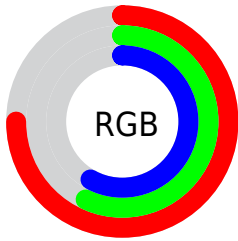
Format	Color
R_{YB}	192, 145, 149
Decimal	12620181
CIE _{Lab}	64.67, 18.33, 4.79
CIE _{LCh}	65, 18.948, 14.647
Yxy	33.6272, 0.3590, 0.3237
Android (android.graphics.Color)	4290810261 (0xFFC09195)
YUV	159.5090, -5.1809, 28.4946
Hunter-Lab	57.9890, 13.2994, 6.8936

Details

The XYZ color **37.2884, 33.6272, 32.9592** is a light color, and the websafe version is hex **CC9999**. A complement of this color would be **39.6051, 47.3505, 54.6313**, and the grayscale version is **33.2030, 34.9321, 38.0411**.

A 20% lighter version of the original color is **70.2698, 65.2984, 65.4001**, and **16.6885, 14.2905, 13.4340** is the 20% darker color. If you saturate the color by 10%, you get **33.3004, 27.7288, 25.2243**, and if you desaturate by 10%, it is **41.9856, 40.6049, 41.9751**.

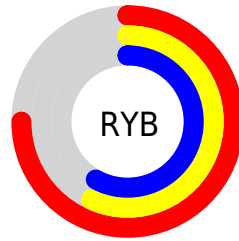
Distribution



Red (75%)

Green (57%)

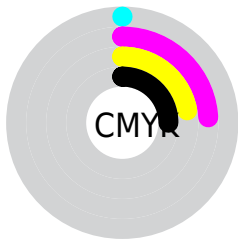
Blue (58%)



Red (75%)

Yellow (57%)

Blue (58%)

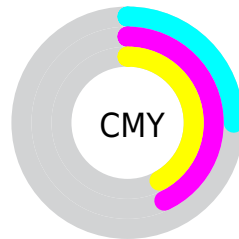


Cyan (0%)

Magenta (24%)

Yellow (22%)

Black (25%)



Cyan (25%)


Magenta (43%)


Yellow (42%)

Brightness & Saturation Gradients


These gradients show how the XYZ color 37.2884, 33.6272, 32.9592 changes by changing the brightness by 10 percent. The first figure shows a shift by +10% for each color and the second figure -10%.


Similar to the brightness gradients but the following saturation gradients show a change of the XYZ color 37.2884, 33.6272, 32.9592 by changing the saturation by 10% instead.


 37.2884, 33.6272,
32.9592


 37.2884, 33.6272,
32.9592


325.8913,
318.4665, 330.0922

 25.6056, 22.6074,
21.8243

 70.3271, 65.3535,
65.4271

 16.6599, 14.3039,
13.5308


 92.4136, 86.8288,
87.5972

 10.0861, 8.3323,
7.6601


118.6988,
112.5579, 114.2828

 5.5188, 4.3083,
3.7936

149.5479,
142.9254, 145.9025

 2.5926, 1.8475,
1.5128

185.3264,
178.3157, 182.8747

 0.9422, 0.5165,
0.2274

226.3996,

 0.0000, 0.0000,

219.1130, 225.6180

0.0000

273.1328,
265.7018, 274.5510

■ 37.2884, 33.6272,
32.9592

■ 37.2884, 33.6272,
32.9592

■ 33.3004, 27.7288,
25.2243

■ 41.9856, 40.6049,
41.9751

■ 29.9845, 22.8515,
18.7102

■ 47.4214, 48.7071,
52.3241

■ 27.3045, 18.9387,
13.3551

■ 53.6266, 57.9822,
64.0583

■ 25.2193, 15.9262,
9.0909

■ 60.6296, 68.4742,
77.2260

■ 23.6835, 13.7422,
5.8424

■ 68.4574, 80.2250,
91.8735

■ 22.6447, 12.3040,
3.5248

■ 75.4526, 89.9082,
107.4838

■ 22.0402, 11.5116,
2.0393

■ 75.5483, 89.9465,
107.9873

■ 21.8343, 11.2449,
1.5228

Harmonies

Analogous

The Analogous color harmony consists of three colors that are next to each other on the color wheel.



37.2699, 33.6272, 40.7213



37.2884, 33.6272, 32.9592



35.8252, 33.6272, 27.0727

Triad

The Triadic color harmony groups three colors that are evenly spaced from another and form a triangle on the color wheel.



37.2884, 33.6272, 32.9592



28.4285, 33.6272, 26.9661



30.5980, 33.6272, 53.0241

Complementary

The Complementary color scheme is a pair of colors which are on the opposite of each other on the color wheel.



37.2884, 33.6272, 32.9592



39.6051, 47.3505, 54.6313

Split Complementary

Split-complementary colors differ from the complementary color scheme. The scheme consists of three colors, the original color and two neighbors of the complement color.



28.3863, 33.6272, 48.1696



37.2884, 33.6272, 32.9592



27.1830, 33.6272, 32.7932

Square

The Square scheme is like the rectangle color scheme, but the four colors are evenly spaced on the color wheel.



37.2884, 33.6272, 32.9592



30.6585, 33.6272, 23.9603



27.1680, 33.6272, 40.5301



33.3012, 33.6272, 53.0852

Rectangle

The Rectangle color scheme consists of four colors that form a rectangle on the color wheel.



37.2884, 33.6272, 32.9592



34.2518, 33.6272, 24.6874



27.1680, 33.6272, 40.5301



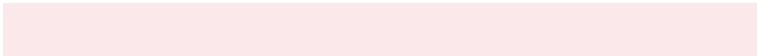
29.7760, 33.6272, 51.8712

Sweetspot

The Sweet Spot groups the original color and five complimentary colors.



37.2893, 33.6288, 32.9599



83.1960, 84.1826, 89.6264



40.2077, 34.6608, 54.4403



17.7166, 17.8636, 18.9775



92.9021, 97.7402, 106.4391



19.4759, 20.4902, 22.3138

Same Dimension

The Same Dimension uses a secret algorithm to generate beautiful new colors.



37.2893, 33.6288, 32.9599



63.8045, 55.3631, 52.4465



40.0897, 39.7314, 32.3460



10.1072, 10.0915, 10.6550



14.7045, 7.5715, 1.0899



0.6475, 0.3320, 0.1109

Inverse Universe

The Inverse Universe completely reimagines the original color for something new.



37.2893, 33.6288, 32.9599



63.8045, 55.3631, 52.4465



36.1747, 39.7907, 55.6430



10.1072, 10.0915, 10.6550



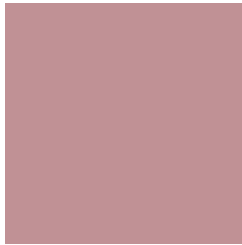
14.7045, 7.5715, 1.0899



0.6475, 0.3320, 0.1109

Previews

White Background



This preview shows how the XYZ color 37.2884, 33.6272, 32.9592 looks on a white background.

Color Contrast Check

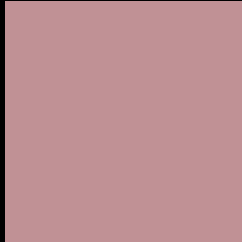
Large Text (above 18pt) WCAG AA × Fail

Any Text WCAG AA × Fail

Large Text (above 18pt) WCAG AAA × Fail

Any Text WCAG AAA × Fail

Black Background



This preview shows how the XYZ color 37.2884, 33.6272, 32.9592 looks on a black background.

Color Contrast Check

Large Text (above 18pt) WCAG AA ✓ Pass

Any Text WCAG AA ✓ Pass

Large Text (above 18pt) WCAG AAA ✓ Pass

Any Text WCAG AAA ✓ Pass

If you want to check with other color combinations, try the [Color Contrast Checker](#).

XYZ 37.2884, 33.6272, 32.9592

Background



This preview shows how black text looks on a background with the XYZ color 37.2884, 33.6272, 32.9592.



This preview shows how white text looks on a background with the XYZ color 37.2884, 33.6272,

Color Blindness Simulation

Color vision deficiency is a very complex topic, and I could not describe the different causes any better than Wikipedia does, so if you want to learn more, you should check out their [article about color blindness](#).

Dichromacy



Original Color

37.2884, 33.6272, 32.9592

Protanopia

32.3021, 33.6171, 35.7966

Deuteranopia

34.4780, 33.8247, 32.7286



Tritanopia

37.8820, 33.6505, 35.5090

Trichromacy



Original Color

37.2884, 33.6272, 32.9592

Protanomaly

33.9913, 33.5270, 34.8168

Deuteranomaly

35.3841, 33.5781, 32.6332

Tritanomaly

37.7153, 33.5839, 34.6315

Monochromacy



Original Color

37.2884, 33.6272, 32.9592

Achromatopsia

33.4132, 35.1533, 38.2819

Achromatomaly

34.7354, 34.6136, 36.3028

CSS Examples

Text

The CSS property to change the color of the text to XYZ 37.2884, 33.6272, 32.9592 is called "color". The color property can be set on classes, ids or directly on the HTML element.

This example shows how text in the color `rgb(192, 145, 149)` looks like.

```
.text, #text, p{  
    color:rgb(192, 145, 149)  
}
```

If you want to add a text shadow in that color use the text-shadow property, you can generate a text shadow directly with our [CSS Text Shadow Generator](#).

Here you see how black text with a 4 pixel rgb(192, 145, 149) colored shadow looks like.

```
.shadow{ text-shadow: 4px 4px 2px rgb(192, 145, 149) }
```

Border

The CSS property to change the border of an element to XYZ 37.2884, 33.6272, 32.9592 is called "border". The border property can be set on classes, ids or directly on the HTML element.

This example shows the color as border, it can be applied via the CSS property "border" or "border-color".

```
.border, #border, table{ border:4px solid rgb(192, 145, 149) }
```


If only the border color should be changed use the property `border-color`.

```
.border{ border-color:rgb(192, 145, 149) }
```

If you want to add a box shadow in that color use:

Here you see how a box with a 4 pixel `rgb(192, 145, 149)` colored shadow looks like.

```
.boxshadow{ -moz-box-shadow:4px 4px 4px  
4px rgb(192, 145, 149); -webkit-box-  
shadow:4px 4px 4px 4px rgb(192, 145, 149);  
box-shadow:4px 4px 4px 4px rgb(192, 145,  
149) }
```

Background

The CSS property to change the background color of an element to XYZ 37.2884, 33.6272, 32.9592 is called "background". The background property can be set on classes, ids or directly on the HTML element.

```
.background, #background, body{  
background: rgb(192, 145, 149) }
```

If only the background color should be changed can be used:

```
.background{ background-color: rgb(192,  
145, 149) }
```

This example shows the color as background, it is applied via the CSS property "background".

To optimize and compress your CSS code, you can use our [online CSS compressor and optimizer](#) based on csstidy. If you want to create a linear or radial gradient as background or border, check our [CSS Gradient Generator](#).

Hey! You found this booklet interesting? Support Converting Colors with the new Membership Option!

The pro membership hides all ads, plus gives you double the colors in the color bucket, and more awesome pro features!

[Learn more, Memberships starting at \\$2.50/m!](#)

**Follow me
on Twitter!**

@ConvertingColor