

Converting Colors

XYZ(37.3001, 34.0472, 33.6345)

Have a look what the booklet for
XYZ(37.3001, 34.0472, 33.6345)
contains.

XYZ(37.1739, 34.0166, 33.4607)	3
<i>Conversions</i>	4
<i>Details</i>	6
<i>Harmonies</i>	12
<i>Previews</i>	24
<i>Color Blindness Simulation</i>	28
<i>CSS Examples</i>	31

Color

**XYZ(37.1739, 34.0166,
33.4607)**

Conversions

Conversions Part 1

Format	Color
Hex	BE9396
RGB	190, 147, 150
RGB Percent	75%, 58%, 59%
CMY	0.2549, 0.4235, 0.4118
CMYK	0.00, 0.23, 0.21, 0.25
HSL	356°, 25%, 66%
HSV	356°, 23%, 75%
XYZ	37.1739, 34.0166, 33.4607
YIQ	160.1990, 24.6650, 10.0490

Conversions

Conversions Part 2

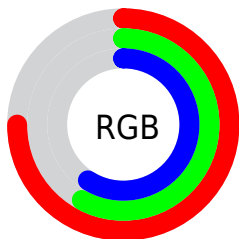
Format	Color
RYB	190, 147, 150
Decimal	12489622
CIELab	64.98, 16.62, 4.65
CIELCh	65, 17.258, 15.625
Yxy	34.0166, 0.3552, 0.3250
Android (android.graphics.Color)	4290679702 (0xFFBE9396)
YUV	160.1990, -5.0281, 26.1355
Hunter-Lab	58.3238, 11.7043, 6.8116

Details

The XYZ color **37.1739, 34.0166, 33.4607** is a light color, and the websafe version is hex **CC9999**. A complement of this color would be **39.4171, 46.6185, 53.9368**, and the grayscale version is **33.5207, 35.2663, 38.4050**.

A 20% lighter version of the original color is **70.1435, 65.9071, 66.1511**, and **16.5883, 14.5008, 13.7290** is the 20% darker color. If you saturate the color by 10%, you get **33.1422, 28.0616, 25.6162**, and if you desaturate by 10%, it is **41.9102, 41.0365, 42.6001**.

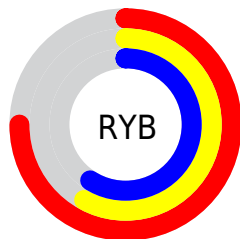
Distribution



Red (75%)

Green (58%)

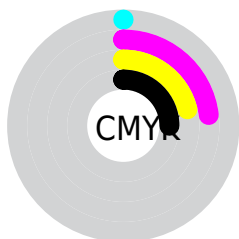
Blue (59%)



Red (75%)

Yellow (58%)

Blue (59%)

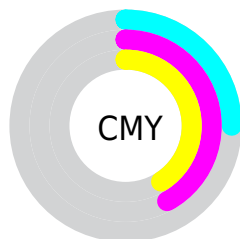


Cyan (0%)

Magenta (23%)

Yellow (21%)

Black (25%)



Cyan (25%)


Magenta (42%)


Yellow (41%)

Brightness & Saturation Gradients


These gradients show how the XYZ color 37.1739, 34.0166, 33.4607 changes by changing the brightness by 10 percent. The first figure shows a shift by +10% for each color and the second figure -10%.


Similar to the brightness gradients but the following saturation gradients show a change of the XYZ color 37.1739, 34.0166, 33.4607 by changing the saturation by 10% instead.


 37.1739, 34.0166,
33.4607


 37.1739, 34.0166,
33.4607

325.4053,
320.2061, 332.4160

 25.5165, 22.9064,
22.2056


 70.1523, 65.9595,
66.2184

 16.5930, 14.5244,
13.8083


 92.2039, 87.5609,
88.5581

 10.0383, 8.4863,
7.8502


118.4509,
113.4282, 115.4297

 5.4868, 4.4076,
3.9129

149.2588,
143.9457, 147.2519

 2.5733, 1.9041,
1.5777

184.9928,
179.4978, 184.4430

 0.9324, 0.5508,
0.2748

226.0183,

 0.0000, 0.0000,

220.4690, 227.4217

0.0000

272.7007,
267.2436, 276.6066

■ 37.1739, 34.0166,
33.4607

■ 37.1739, 34.0166,
33.4607

■ 33.1422, 28.0616,
25.6162

■ 41.9102, 41.0365,
42.6001

■ 29.7788, 23.1152,
19.0061

■ 47.3795, 49.1649,
53.0872

■ 27.0482, 19.1229,
13.5681

■ 53.6122, 58.4484,
64.9740

■ 24.9109, 16.0231,
9.2337

■ 60.6361, 68.9299,
78.3097

■ 23.3226, 13.7472,
5.9273

■ 68.4775, 80.6499,
93.1406

■ 22.2328, 12.2166,
3.5637

■ 75.0453, 89.6872,
107.9638

■ 21.5818, 11.3372,
2.0439

■ 21.3095, 10.9769,
1.3846

Harmonies

Analogous

The Analogous color harmony consists of three colors that are next to each other on the color wheel.



37.2036, 34.0166, 40.5541



37.1739, 34.0166, 33.4607



35.8031, 34.0166, 28.0626

Triad

The Triadic color harmony groups three colors that are evenly spaced from another and form a triangle on the color wheel.



37.1739, 34.0166, 33.4607



29.0235, 34.0166, 28.2390



31.1556, 34.0166, 52.0003

Complementary

The Complementary color scheme is a pair of colors which are on the opposite of each other on the color wheel.



37.1739, 34.0166, 33.4607



39.4171, 46.6185, 53.9368

Split Complementary

Split-complementary colors differ from the complementary color scheme. The scheme consists of three colors, the original color and two neighbors of the complement color.



29.0923, 34.0166, 47.7489



37.1739, 34.0166, 33.4607



27.9049, 34.0166, 33.7318

Square

The Square scheme is like the rectangle color scheme, but the four colors are evenly spaced on the color wheel.



37.1739, 34.0166, 33.4607



31.0572, 34.0166, 25.3228



27.9295, 34.0166, 40.8622



33.6408, 34.0166, 51.9031

Rectangle

The Rectangle color scheme consists of four colors that form a rectangle on the color wheel.



37.1739, 34.0166, 33.4607



34.3518, 34.0166, 25.8832



27.9295, 34.0166, 40.8622



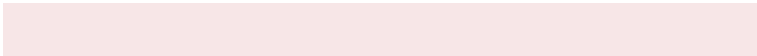
30.3925, 34.0166, 51.0107

Sweetspot

The Sweet Spot groups the original color and five complimentary colors.



37.1748, 34.0182, 33.4614



81.2460, 82.2345, 87.3714



40.0800, 35.0781, 53.3736



17.7077, 17.8600, 18.9307



92.9021, 97.7402, 106.4391



19.4759, 20.4902, 22.3138

Same Dimension

The Same Dimension uses a secret algorithm to generate beautiful new colors.



37.1748, 34.0182, 33.4614



63.6971, 56.2212, 53.5150



39.9427, 39.9352, 33.2088



9.5564, 9.5469, 10.0531



14.1807, 7.3034, 0.9794



0.5648, 0.2898, 0.0874

Inverse Universe

The Inverse Universe completely reimagines the original color for something new.



37.1748, 34.0182, 33.4614



63.6971, 56.2212, 53.5150



36.0966, 39.4588, 54.4292



9.5564, 9.5469, 10.0531



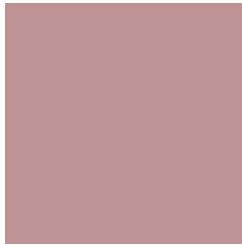
14.1807, 7.3034, 0.9794



0.5648, 0.2898, 0.0874

Previews

White Background



This preview shows how the XYZ color 37.1739, 34.0166, 33.4607 looks on a white background.

Color Contrast Check

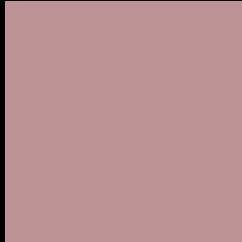
Large Text (above 18pt) WCAG AA × Fail

Any Text WCAG AA × Fail

Large Text (above 18pt) WCAG AAA × Fail

Any Text WCAG AAA × Fail

Black Background



This preview shows how the XYZ color 37.1739, 34.0166, 33.4607 looks on a black background.

Color Contrast Check

Large Text (above 18pt) WCAG AA ✓ Pass

Any Text WCAG AA ✓ Pass

Large Text (above 18pt) WCAG AAA ✓ Pass

Any Text WCAG AAA ✓ Pass

If you want to check with other color combinations, try the [Color Contrast Checker](#).

XYZ 37.1739, 34.0166, 33.4607

Background



This preview shows how black text looks on a background with the XYZ color 37.1739, 34.0166, 33.4607.



This preview shows how white text looks on a background with the XYZ color 37.1739, 34.0166,

Color Blindness Simulation

Color vision deficiency is a very complex topic, and I could not describe the different causes any better than Wikipedia does, so if you want to learn more, you should check out their [article about color blindness](#).

Dichromacy



Original Color

37.1739, 34.0166, 33.4607

Protanopia

32.7557, 34.0913, 36.3064

Deuteranopia

34.9475, 34.2995, 33.2123



Tritanopia

37.8505, 34.0685, 36.4792

Trichromacy



Original Color

37.1739, 34.0166, 33.4607

Protanomaly

34.2372, 33.8862, 35.3080

Deuteranomaly

35.7828, 34.2482, 33.1584

Tritanomaly

37.5975, 33.9672, 35.1466

Monochromacy



Original Color

37.1739, 34.0166, 33.4607

Achromatopsia

33.4132, 35.1533, 38.2819

Achromatomaly

34.5167, 34.5009, 36.2926

CSS Examples

Text

The CSS property to change the color of the text to XYZ 37.1739, 34.0166, 33.4607 is called "color". The color property can be set on classes, ids or directly on the HTML element.

This example shows how text in the color `rgb(190, 147, 150)` looks like.

```
.text, #text, p{  
    color:rgb(190, 147, 150)  
}
```

If you want to add a text shadow in that color use the text-shadow property, you can generate a text shadow directly with our [CSS Text Shadow Generator](#).

Here you see how black text with a 4 pixel rgb(190, 147, 150) colored shadow looks like.

```
.shadow{ text-shadow: 4px 4px 2px rgb(190, 147, 150) }
```

Border

The CSS property to change the border of an element to XYZ 37.1739, 34.0166, 33.4607 is called "border". The border property can be set on classes, ids or directly on the HTML element.

This example shows the color as border, it can be applied via the CSS property "border" or "border-color".

```
.border, #border, table{ border:4px solid rgb(190, 147, 150) }
```


If only the border color should be changed use the property `border-color`.

```
.border{ border-color:rgb(190, 147, 150) }
```

If you want to add a box shadow in that color use:

Here you see how a box with a 4 pixel `rgb(190, 147, 150)` colored shadow looks like.

```
.boxshadow{ -moz-box-shadow:4px 4px 4px  
4px rgb(190, 147, 150); -webkit-box-  
shadow:4px 4px 4px 4px rgb(190, 147, 150);  
box-shadow:4px 4px 4px 4px rgb(190, 147,  
150) }
```

Background

The CSS property to change the background color of an element to XYZ 37.1739, 34.0166, 33.4607 is called "background". The background property can be set on classes, ids or directly on the HTML element.

```
.background, #background, body{  
background: rgb(190, 147, 150) }
```

If only the background color should be changed can be used:

```
.background{ background-color: rgb(190,  
147, 150) }
```

This example shows the color as background, it is applied via the CSS property "background".

To optimize and compress your CSS code, you can use our [online CSS compressor and optimizer](#) based on csstidy. If you want to create a linear or radial gradient as background or border, check our [CSS Gradient Generator](#).

Hey! You found this booklet interesting? Support Converting Colors with the new Membership Option!

The pro membership hides all ads, plus gives you double the colors in the color bucket, and more awesome pro features!

[Learn more, Memberships starting at \\$2.50/m!](#)

**Follow me
on Twitter!**

@ConvertingColor