

# Converting Colors

XYZ(37.3544, 35.9346, 33.7790)

Have a look what the booklet for  
XYZ(37.3544, 35.9346, 33.7790)  
contains.

<b>XYZ(37.4761, 36.0838, 33.8438)</b> .....	3
<b><i>Conversions</i></b> .....	4
<b><i>Details</i></b> .....	6
<b><i>Harmonies</i></b> .....	12
<b><i>Previews</i></b> .....	24
<b><i>Color Blindness Simulation</i></b> .....	28
<b><i>CSS Examples</i></b> .....	31

# Color

**XYZ(37.4761, 36.0838,  
33.8438)**

# Conversions

## Conversions Part 1

Format	Color
Hex	BA9B96
RGB	186, 155, 150
RGB Percent	73%, 61%, 59%
CMY	0.2706, 0.3921, 0.4118
CMYK	0.00, 0.17, 0.19, 0.27
HSL	8°, 21%, 66%
HSV	8°, 19%, 73%
XYZ	37.4761, 36.0838, 33.8438
YIQ	163.6990, 20.0810, 5.0170

# Conversions

## Conversions Part 2

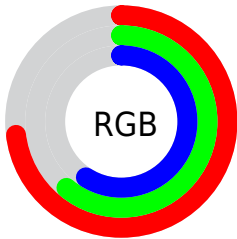
<b>Format</b>	<b>Color</b>
<a href="#">RYB</a>	<a href="#">186, 156, 150</a>
Decimal	<a href="#">12229526</a>
CIELab	<a href="#">66.58, 10.68, 6.91</a>
CIElCh	<a href="#">67, 12.716, 32.903</a>
Yxy	<a href="#">36.0838, 0.3489, 0.3360</a>
Android (android.graphics.Color)	<a href="#">4290419606</a> ( <a href="#">0xFFBA9B96</a> )
YUV	<a href="#">163.6990, -6.7536, 19.5580</a>
Hunter-Lab	<a href="#">60.0698, 6.2397, 8.6444</a>

# Details

The XYZ color **37.4761, 36.0838, 33.8438** is a light color, and the websafe version is hex **CC9999**. A complement of this color would be **37.9642, 43.0760, 52.7683**, and the grayscale version is **35.1688, 37.0003, 40.2933**.

A 20% lighter version of the original color is **70.3175, 68.8378, 66.7076**, and **16.7182, 15.7070, 13.9550** is the 20% darker color. If you saturate the color by 10%, you get **33.6050, 30.5510, 25.7413**, and if you desaturate by 10%, it is **41.9405, 42.4220, 43.3179**.

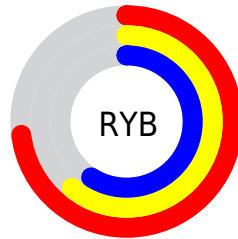
# Distribution



Red (73%)

Green (61%)

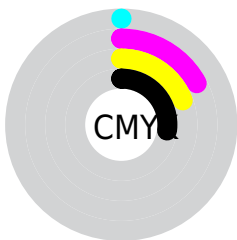
Blue (59%)



Red (73%)

Yellow (61%)

Blue (59%)

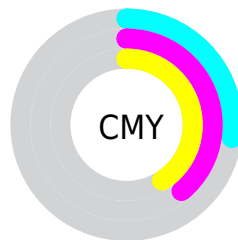


Cyan (0%)

Magenta (17%)

Yellow (19%)

Black (27%)



Cyan (27%)

Magenta (39%)

Yellow (41%)


# Brightness & Saturation Gradients

These gradients show how the XYZ color 37.4761, 36.0838, 33.8438 changes by changing the brightness by 10 percent. The first figure shows a shift by +10% for each color and the second figure -10%.


Similar to the brightness gradients but the following saturation gradients show a change of the XYZ color 37.4761, 36.0838, 33.8438 by changing the saturation by 10% instead.





 37.4761, 36.0838,  
33.8438

 37.4761, 36.0838,  
33.8438

326.6871,  
329.3267, 334.1829

 25.7517, 24.4989,  
22.4972

 70.6135, 69.1614,  
66.8218

 16.7697, 15.7041,  
14.0209


 92.7572, 91.4229,  
89.2903

 10.1647, 9.3150,  
7.9963


119.1048,  
118.0121, 116.3033

 5.5714, 4.9472,  
4.0048

150.0215,  
149.3133, 148.2791

 2.6244, 2.2163,  
1.6280

185.8727,  
185.7110, 185.6365

 0.9584, 0.7289,  
0.3107

227.0238,

 0.0000, 0.0000,

227.5895, 228.7939

0.0000

273.8401,  
275.3333, 278.1698

■ 37.4761, 36.0838,  
33.8438

■ 37.4761, 36.0838,  
33.8438

■ 33.6050, 30.5510,  
25.7413

■ 41.9405, 42.4220,  
43.3179

■ 30.2991, 25.7866,  
18.9445

■ 47.0187, 49.5909,  
54.2206

■ 27.5328, 21.7580,  
13.3856

■ 52.7339, 57.6209,  
66.6086

■ 25.2769, 18.4282,  
8.9897

■ 59.1072, 66.5394,  
80.5349

■ 23.4997, 15.7573,  
5.6739

■ 66.1588, 76.3724,  
96.0496

■ 22.1658, 13.7009,  
3.3441

■ 72.8265, 86.7124,  
107.5065

■ 21.2346, 12.2095,  
1.8900

■ 74.0599, 89.1792,  
107.9177

■ 20.6458, 11.2204,  
1.1121

■ 20.6160, 11.1714,  
1.0697

# Harmonies

## Analogous

The Analogous color harmony consists of three colors that are next to each other on the color wheel.



38.1000, 36.0838, 38.7585



37.4761, 36.0838, 33.8438



35.9982, 36.0838, 30.6432

# Triad

The Triadic color harmony groups three colors that are evenly spaced from another and form a triangle on the color wheel.



37.4761, 36.0838, 33.8438



31.1274, 36.0838, 34.6866



34.4830, 36.0838, 50.7680

# Complementary

The Complementary color scheme is a pair of colors which are on the opposite of each other on the color wheel.



37.4761, 36.0838, 33.8438



37.9642, 43.0760, 52.7683

# Split Complementary

Split-complementary colors differ from the complementary color scheme. The scheme consists of three colors, the original color and two neighbors of the complement color.



32.6494, 36.0838, 49.4252



37.4761, 36.0838, 33.8438



30.7551, 36.0838, 39.8246

# Square

The Square scheme is like the rectangle color scheme, but the four colors are evenly spaced on the color wheel.



37.4761, 36.0838, 33.8438



32.3384, 36.0838, 31.0971



31.3022, 36.0838, 45.2893



36.3322, 36.0838, 48.8066



# Rectangle

The Rectangle color scheme consists of four colors that form a rectangle on the color wheel.



37.4761, 36.0838, 33.8438



34.7527, 36.0838, 29.7415



31.3022, 36.0838, 45.2893



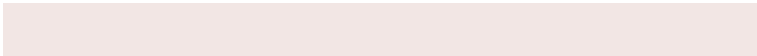
33.8444, 36.0838, 50.6883

# Sweetspot

The Sweet Spot groups the original color and five complimentary colors.



37.4771, 36.0854, 33.8446



78.8910, 80.9535, 84.6591



39.5175, 35.5967, 48.6122



17.2438, 17.6446, 18.3664



90.7827, 95.5105, 104.0109



18.6292, 19.5994, 21.3438



# Same Dimension

The Same Dimension uses a secret algorithm to generate beautiful new colors.



37.4771, 36.0854, 33.8446



64.9769, 61.1961, 55.1391



40.6604, 42.4521, 34.9057



9.1026, 9.2082, 9.4045



13.9031, 7.5825, 0.7308



0.5226, 0.3322, 0.0366



# Inverse Universe

The Inverse Universe completely reimagines the original color for something new.



37.9642, 43.0760, 52.7683



66.0110, 76.0660, 95.4045



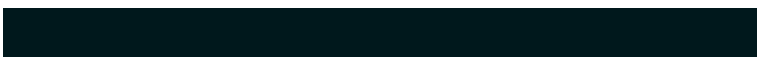
34.5738, 36.2951, 51.6382



9.1574, 9.9920, 11.5254



14.4782, 19.4161, 34.2377

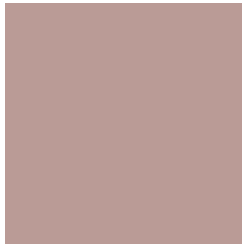


0.5400, 0.7436, 1.2168



# Previews

## White Background



This preview shows how the XYZ color 37.4761, 36.0838, 33.8438 looks on a white background.

## Color Contrast Check

Large Text (above 18pt) WCAG AA × Fail

Any Text WCAG AA × Fail

Large Text (above 18pt) WCAG AAA × Fail

Any Text WCAG AAA × Fail



# Black Background



This preview shows how the XYZ color 37.4761, 36.0838, 33.8438 looks on a black background.

## Color Contrast Check

Large Text (above 18pt) WCAG AA ✓ Pass

Any Text WCAG AA ✓ Pass

Large Text (above 18pt) WCAG AAA ✓ Pass

Any Text WCAG AAA ✓ Pass

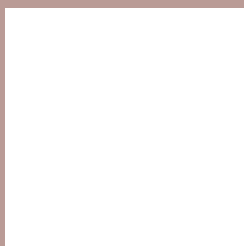
If you want to check with other color combinations, try the [Color Contrast Checker](#).

**XYZ 37.4761, 36.0838, 33.8438**

## **Background**



This preview shows how black text looks on a background with the XYZ color 37.4761, 36.0838, 33.8438.



This preview shows how white text looks on a background with the XYZ color 37.4761, 36.0838,

33.8438.

# Color Blindness Simulation

Color vision deficiency is a very complex topic, and I could not describe the different causes any better than Wikipedia does, so if you want to learn more, you should check out their [article about color blindness](#).

## Dichromacy



### Original Color

37.4761, 36.0838, 33.8438

### Protanopia

34.4310, 36.0051, 35.2720

### Deuteranopia

36.6849, 35.9240, 33.8547



## Tritanopia

38.9218, 36.1904, 40.5314

# Trichromacy



## Original Color

37.4761, 36.0838, 33.8438

## Protanomaly

35.5212, 36.0619, 34.7942

## Deuteranomaly

36.9219, 36.0462, 33.8658

## Tritanomaly

38.3943, 36.2141, 38.2241

# Monochromacy



## Original Color

37.4761, 36.0838, 33.8438

## Achromatopsia

35.2861, 37.1238, 40.4278

## Achromatomaly

36.0161, 36.7636, 37.9987

# CSS Examples

## Text

The CSS property to change the color of the text to XYZ 37.4761, 36.0838, 33.8438 is called "color". The color property can be set on classes, ids or directly on the HTML element.

This example shows how text in the color `rgb(186, 155, 150)` looks like.

```
.text, #text, p{  
    color:rgb(186, 155, 150)  
}
```

If you want to add a text shadow in that color use the text-shadow property, you can generate a text shadow directly with our [CSS Text Shadow Generator](#).

Here you see how black text with a 4 pixel rgb(186, 155, 150) colored shadow looks like.

```
.shadow{ text-shadow: 4px 4px 2px rgb(186, 155, 150) }
```

## Border

The CSS property to change the border of an element to XYZ 37.4761, 36.0838, 33.8438 is called "border". The border property can be set on classes, ids or directly on the HTML element.

This example shows the color as border, it can be applied via the CSS property "border" or "border-color".

```
.border, #border, table{ border:4px solid rgb(186, 155, 150) }
```



If only the border color should be changed use the property `border-color`.

```
.border{ border-color:rgb(186, 155, 150) }
```

If you want to add a box shadow in that color use:

Here you see how a box with a 4 pixel `rgb(186, 155, 150)` colored shadow looks like.

```
.boxshadow{ -moz-box-shadow:4px 4px 4px  
4px rgb(186, 155, 150); -webkit-box-  
shadow:4px 4px 4px 4px rgb(186, 155, 150);  
box-shadow:4px 4px 4px 4px rgb(186, 155,  
150) }
```

# Background

The CSS property to change the background color of an element to XYZ 37.4761, 36.0838, 33.8438 is called "background". The background property can be set on classes, ids or directly on the HTML element.

```
.background, #background, body{  
background: rgb(186, 155, 150) }
```

If only the background color should be changed can be used:

```
.background{ background-color: rgb(186,  
155, 150) }
```

This example shows the color as background, it is applied via the CSS property "background".

To optimize and compress your CSS code, you can use our [online CSS compressor and optimizer](#) based on csstidy. If you want to create a linear or radial gradient as background or border, check our [CSS Gradient Generator](#).

Hey! You found this booklet interesting? Support Converting Colors with the new Membership Option!

The pro membership hides all ads, plus gives you double the colors in the color bucket, and more awesome pro features!

**[Learn more, Memberships starting at \\$2.50/m!](#)**

**Follow me  
on Twitter!**

@ConvertingColor