

Converting Colors

XYZ(37.4804, 37.2793, 30.1866)

Have a look what the booklet for
XYZ(37.4804, 37.2793, 30.1866)
contains.

XYZ(37.3815, 37.1288, 30.0073)	3
<i>Conversions</i>	4
<i>Details</i>	6
<i>Harmonies</i>	12
<i>Previews</i>	24
<i>Color Blindness Simulation</i>	28
<i>CSS Examples</i>	31

Color

**XYZ(37.3815, 37.1288,
30.0073)**

Conversions

Conversions Part 1

Format	Color
Hex	BA9F8C
RGB	186, 159, 140
RGB Percent	73%, 62%, 55%
CMY	0.2706, 0.3765, 0.4510
CMYK	0.00, 0.15, 0.25, 0.27
HSL	25°, 25%, 64%
HSV	25°, 25%, 73%
XYZ	37.3815, 37.1288, 30.0073
YIQ	164.9070, 22.1910, -0.1850

Conversions

Conversions Part 2

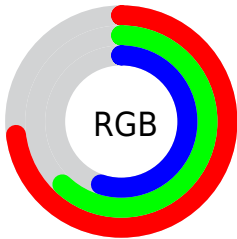
Format	Color
R_{YB}	186, 172, 140
Decimal	12230540
CIE _{Lab}	67.37, 6.96, 13.60
CIE _{LCh}	67, 15.275, 62.875
Yxy	37.1288, 0.3577, 0.3552
Android (android.graphics.Color)	4290420620 (0xFFBA9F8C)
YUV	164.9070, -12.2792, 18.4986
Hunter-Lab	60.9334, 2.8729, 13.4554

Details

The XYZ color **37.3815, 37.1288, 30.0073** is a light color, and the websafe version is hex **CC9999**. A complement of this color would be **33.4967, 36.7572, 51.7841**, and the grayscale version is **35.7699, 37.6328, 40.9821**.

A 20% lighter version of the original color is **70.7463, 71.0429, 61.0228**, and **16.7237, 16.3688, 11.9509** is the 20% darker color. If you saturate the color by 10%, you get **34.3295, 33.0371, 22.7859**, and if you desaturate by 10%, it is **40.8331, 41.6482, 38.5066**.

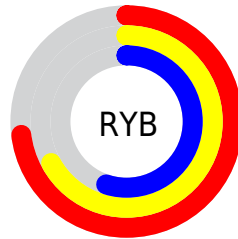
Distribution



Red (73%)

Green (62%)

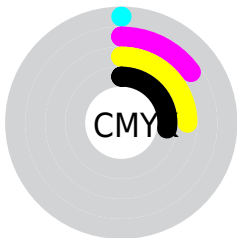
Blue (55%)



Red (73%)

Yellow (67%)

Blue (55%)

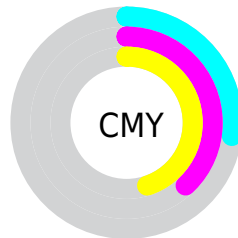


Cyan (0%)

Magenta (15%)

Yellow (25%)

Black (27%)



Cyan (27%)

Magenta (38%)

Yellow (45%)

Brightness & Saturation Gradients

These gradients show how the XYZ color 37.3815, 37.1288, 30.0073 changes by changing the brightness by 10 percent. The first figure shows a shift by +10% for each color and the second figure -10%.

Similar to the brightness gradients but the following saturation gradients show a change of the XYZ color 37.3815, 37.1288, 30.0073 by changing the saturation by 10% instead.

■ 37.3815, 37.1288,
30.0073

■ 37.3815, 37.1288,
30.0073

326.2862,
333.8678, 316.1468

■ 25.6780, 25.3072,
19.5920

■ 70.4692, 70.7708,
60.7349

■ 16.7143, 16.3061,
11.9177

■ 92.5841, 93.3601,
81.8842

■ 10.1251, 9.7410,
6.5658

■ 118.9002,
120.3074, 107.4487

■ 5.5449, 5.2276,
3.1178

149.7829,
151.9971, 137.8469

■ 2.6084, 2.3814,
1.1551

185.5975,
188.8135, 173.4972

■ 0.9502, 0.8163,
0.0000

226.7093,

■ 0.0000, 0.0000,

231.1412, 214.8183

0.0000

273.4838,
279.3645, 262.2287

■ 37.3815, 37.1288,
30.0073

■ 37.3815, 37.1288,
30.0073

■ 34.3295, 33.0371,
22.7859

■ 40.8331, 41.6482,
38.5066

■ 31.6583, 29.3549,
16.7772

■ 44.6964, 46.6029,
48.3398

■ 29.3517, 26.0698,
11.9138

■ 48.9864, 52.0064,
59.5625

■ 27.3911, 23.1671,
8.1208

■ 53.7166, 57.8703,
72.2264

■ 25.7561, 20.6307,
5.3141

■ 58.8996, 64.2056,
86.3806

■ 24.4234, 18.4432,
3.3966

■ 64.5479, 71.0230,
102.0716

■ 23.3657, 16.5850,
2.2512

■ 68.1276, 77.3147,
105.9403

■ 22.8926, 15.7246,
1.8286

■ 71.3569, 83.7733,
107.0167

■ 74.0599, 89.1792,
107.9177

Harmonies

Analogous

The Analogous color harmony consists of three colors that are next to each other on the color wheel.



39.2057, 37.1288, 33.8271



37.3815, 37.1288, 30.0073



35.0645, 37.1288, 28.8732

Triad

The Triadic color harmony groups three colors that are evenly spaced from another and form a triangle on the color wheel.



37.3815, 37.1288, 30.0073



30.9836, 37.1288, 41.0769



37.7893, 37.1288, 52.2454

Complementary

The Complementary color scheme is a pair of colors which are on the opposite of each other on the color wheel.



37.3815, 37.1288, 30.0073



33.4967, 36.7572, 51.7841

Split Complementary

Split-complementary colors differ from the complementary color scheme. The scheme consists of three colors, the original color and two neighbors of the complement color.



35.5160, 37.1288, 54.7128



37.3815, 37.1288, 30.0073



31.6438, 37.1288, 47.8338

Square

The Square scheme is like the rectangle color scheme, but the four colors are evenly spaced on the color wheel.



37.3815, 37.1288, 30.0073



31.4343, 37.1288, 34.8312



33.2776, 37.1288, 53.0162



39.4483, 37.1288, 46.5921

Rectangle

The Rectangle color scheme consists of four colors that form a rectangle on the color wheel.



37.3815, 37.1288, 30.0073



33.5693, 37.1288, 29.6775



33.2776, 37.1288, 53.0162



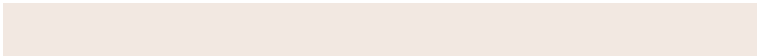
37.0682, 37.1288, 53.5015

Sweetspot

The Sweet Spot groups the original color and five complimentary colors.



37.3825, 37.1305, 30.0081



79.2749, 82.2549, 83.1421



36.6589, 32.0080, 41.0972



17.3624, 17.9922, 18.0651



90.7827, 95.5105, 104.0109



18.6292, 19.5994, 21.3438

Same Dimension

The Same Dimension uses a secret algorithm to generate beautiful new colors.



37.3825, 37.1305, 30.0081



64.4808, 62.9305, 46.5681



41.5890, 45.5436, 31.4103



9.3012, 9.6053, 9.4707



15.4715, 10.7194, 1.2536



0.6068, 0.5006, 0.0647

Inverse Universe

The Inverse Universe completely reimagines the original color for something new.



33.4967, 36.7572, 51.7841



56.1506, 62.1249, 93.2333



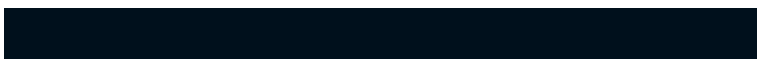
29.7430, 29.2499, 50.5329



8.9472, 9.5717, 11.4554



9.7286, 9.9168, 32.6545



0.4024, 0.4685, 1.1710

Previews

White Background



This preview shows how the XYZ color 37.3815, 37.1288, 30.0073 looks on a white background.

Color Contrast Check

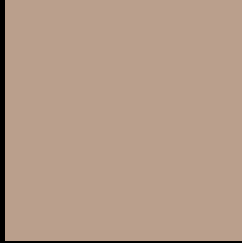
Large Text (above 18pt) WCAG AA × Fail

Any Text WCAG AA × Fail

Large Text (above 18pt) WCAG AAA × Fail

Any Text WCAG AAA × Fail

Black Background



This preview shows how the XYZ color 37.3815, 37.1288, 30.0073 looks on a black background.

Color Contrast Check

Large Text (above 18pt) WCAG AA ✓ Pass

Any Text WCAG AA ✓ Pass

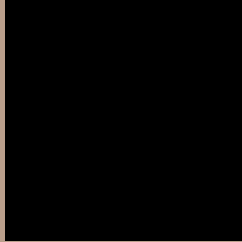
Large Text (above 18pt) WCAG AAA ✓ Pass

Any Text WCAG AAA ✓ Pass

If you want to check with other color combinations, try the [Color Contrast Checker](#).

XYZ 37.3815, 37.1288, 30.0073

Background



This preview shows how black text looks on a background with the XYZ color 37.3815, 37.1288, 30.0073.



This preview shows how white text looks on a background with the XYZ color 37.3815, 37.1288,

Color Blindness Simulation

Color vision deficiency is a very complex topic, and I could not describe the different causes any better than Wikipedia does, so if you want to learn more, you should check out their [article about color blindness](#).

Dichromacy



Original Color

37.3815, 37.1288, 30.0073

Protanopia

35.1712, 37.2746, 30.9322

Deuteranopia

37.9467, 37.1660, 29.9847



Tritanopia

39.6827, 37.0515, 41.6194

Trichromacy



Original Color

37.3815, 37.1288, 30.0073

Protanomaly

35.8595, 37.1109, 30.4724

Deuteranomaly

37.6995, 37.0385, 29.9731

Tritanomaly

38.7133, 36.9026, 36.9808

Monochromacy



Original Color

37.3815, 37.1288, 30.0073

Achromatopsia

35.7637, 37.6262, 40.9749

Achromatomaly

36.3315, 37.4789, 36.7718

CSS Examples

Text

The CSS property to change the color of the text to XYZ 37.3815, 37.1288, 30.0073 is called "color". The color property can be set on classes, ids or directly on the HTML element.

This example shows how text in the color `rgb(186, 159, 140)` looks like.

```
.text, #text, p{  
    color:rgb(186, 159, 140)  
}
```

If you want to add a text shadow in that color use the text-shadow property, you can generate a text shadow directly with our [CSS Text Shadow Generator](#).

Here you see how black text with a 4 pixel rgb(186, 159, 140) colored shadow looks like.

```
.shadow{ text-shadow: 4px 4px 2px rgb(186, 159, 140) }
```

Border

The CSS property to change the border of an element to XYZ 37.3815, 37.1288, 30.0073 is called "border". The border property can be set on classes, ids or directly on the HTML element.

This example shows the color as border, it can be applied via the CSS property "border" or "border-color".

```
.border, #border, table{ border:4px solid rgb(186, 159, 140) }
```


If only the border color should be changed use the property `border-color`.

```
.border{ border-color:rgb(186, 159, 140) }
```

If you want to add a box shadow in that color use:

Here you see how a box with a 4 pixel `rgb(186, 159, 140)` colored shadow looks like.

```
.boxshadow{ -moz-box-shadow:4px 4px 4px  
4px rgb(186, 159, 140); -webkit-box-  
shadow:4px 4px 4px 4px rgb(186, 159, 140);  
box-shadow:4px 4px 4px 4px rgb(186, 159,  
140) }
```

Background

The CSS property to change the background color of an element to XYZ 37.3815, 37.1288, 30.0073 is called "background". The background property can be set on classes, ids or directly on the HTML element.

```
.background, #background, body{  
background: rgb(186, 159, 140) }
```

If only the background color should be changed can be used:

```
.background{ background-color: rgb(186,  
159, 140) }
```

This example shows the color as background, it is applied via the CSS property "background".

To optimize and compress your CSS code, you can use our [online CSS compressor and optimizer](#) based on csstidy. If you want to create a linear or radial gradient as background or border, check our [CSS Gradient Generator](#).

Hey! You found this booklet interesting? Support Converting Colors with the new Membership Option!

The pro membership hides all ads, plus gives you double the colors in the color bucket, and more awesome pro features!

[Learn more, Memberships starting at \\$2.50/m!](#)

**Follow me
on Twitter!**

@ConvertingColor