

Converting Colors

XYZ(37.4947, 36.7504, 36.5698)

Have a look what the booklet for
XYZ(37.4947, 36.7504, 36.5698)
contains.

XYZ(37.5190, 36.7991, 36.5780)	3
<i>Conversions</i>	4
<i>Details</i>	6
<i>Harmonies</i>	12
<i>Previews</i>	24
<i>Color Blindness Simulation</i>	28
<i>CSS Examples</i>	31

Color

**XYZ(37.5190, 36.7991,
36.5780)**

Conversions

Conversions Part 1

Format	Color
Hex	B69E9C
RGB	182, 158, 156
RGB Percent	71%, 62%, 61%
CMY	0.2863, 0.3804, 0.3882
CMYK	0.00, 0.13, 0.14, 0.29
HSL	5°, 15%, 66%
HSV	5°, 14%, 71%
XYZ	37.5190, 36.7991, 36.5780
YIQ	164.9480, 14.9460, 4.4660

Conversions

Conversions Part 2

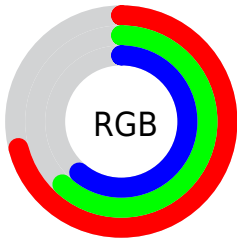
Format	Color
RYB	182, 158, 156
Decimal	11968156
CIELab	67.13, 8.48, 4.29
CIELCh	67, 9.502, 26.825
Yxy	36.7991, 0.3383, 0.3318
Android (android.graphics.Color)	4290158236 (0xFFB69E9C)
YUV	164.9480, -4.4114, 14.9546
Hunter-Lab	60.6623, 4.2415, 6.7130

Details

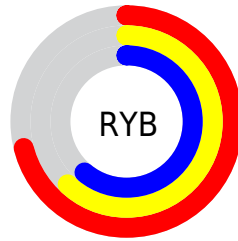
The XYZ color **37.5190, 36.7991, 36.5780** is a light color, and the websafe version is hex **999999**. A complement of this color would be **38.4748, 43.0869, 50.5450**, and the grayscale version is **35.7555, 37.6176, 40.9656**.

A 20% lighter version of the original color is **70.6870, 70.4188, 70.8393**, and **16.8608, 16.2024, 15.6033** is the 20% darker color. If you saturate the color by 10%, you get **33.4200, 30.8852, 28.1694**, and if you desaturate by 10%, it is **42.2427, 43.5920, 46.3350**.

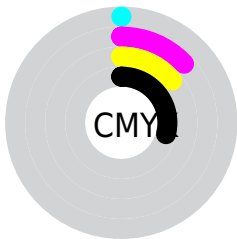
Distribution



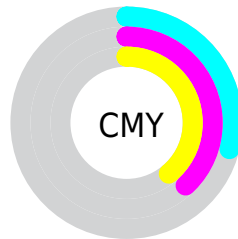
- Red (71%)
- Green (62%)
- Blue (61%)



- Red (71%)
- Yellow (62%)
- Blue (61%)



- Cyan (0%)
- Magenta (13%)
- Yellow (14%)
- Black (29%)



- Cyan (29%)
- Magenta (38%)
- Yellow (39%)

Brightness & Saturation Gradients

These gradients show how the XYZ color 37.5190, 36.7991, 36.5780 changes by changing the brightness by 10 percent. The first figure shows a shift by +10% for each color and the second figure -10%.

Similar to the brightness gradients but the following saturation gradients show a change of the XYZ color 37.5190, 36.7991, 36.5780 by changing the saturation by 10% instead.

■ 37.5190, 36.7991,
36.5780

■ 37.5190, 36.7991,
36.5780

326.8687,
332.4399, 346.5934

■ 25.7851, 25.0520,
24.5877

■ 70.6790, 70.2637,
71.1023

■ 16.7948, 16.1158,
15.5539

■ 92.8357, 92.7500,
94.4734

■ 10.1827, 9.6061,
9.0581

119.1975,
119.5847, 122.4752

■ 5.5834, 5.1386,
4.6818

150.1296,
151.1524, 155.5262

■ 2.6317, 2.3288,
2.0063

185.9974,
187.8373, 194.0450

■ 0.9621, 0.7889,
0.5592

227.1663,

■ 0.0000, 0.0000,

230.0240, 238.4501

0.0000

274.0016,
278.0967, 289.1601

■ 37.5190, 36.7991,
36.5780

■ 37.5190, 36.7991,
36.5780

■ 33.4200, 30.8852,
28.1694

■ 42.2427, 43.5920,
46.3350

■ 29.9166, 25.8096,
21.0476

■ 47.6124, 51.2926,
57.4937

■ 26.9819, 21.5359,
15.1500

■ 53.6525, 59.9343,
70.1070

■ 24.5858, 18.0231,
10.4074

■ 60.3848, 69.5474,
84.2249

■ 22.6955, 15.2265,
6.7440

■ 67.8304, 80.1609,
99.8945

■ 21.2745, 13.0966,
4.0749

■ 73.1015, 88.6852,
107.8728

■ 20.2814, 11.5780,
2.3025

■ 19.6674, 10.6058,
1.3092

■ 19.4489, 10.2598,
0.9553

Harmonies

Analogous

The Analogous color harmony consists of three colors that are next to each other on the color wheel.



37.8292, 36.7991, 40.5110



37.5190, 36.7991, 36.5780



36.5214, 36.7991, 33.7606

Triad

The Triadic color harmony groups three colors that are evenly spaced from another and form a triangle on the color wheel.



37.5190, 36.7991, 36.5780



32.6986, 36.7991, 35.8633



34.8226, 36.7991, 48.5638

Complementary

The Complementary color scheme is a pair of colors which are on the opposite of each other on the color wheel.



37.5190, 36.7991, 36.5780



38.4748, 43.0869, 50.5450

Split Complementary

Split-complementary colors differ from the complementary color scheme. The scheme consists of three colors, the original color and two neighbors of the complement color.



33.4757, 36.7991, 47.1157



37.5190, 36.7991, 36.5780



32.2708, 36.7991, 39.6282

Square

The Square scheme is like the rectangle color scheme, but the four colors are evenly spaced on the color wheel.



37.5190, 36.7991, 36.5780



33.7356, 36.7991, 33.3684



32.5514, 36.7991, 43.7731



36.2473, 36.7991, 47.6091

Rectangle

The Rectangle color scheme consists of four colors that form a rectangle on the color wheel.



37.5190, 36.7991, 36.5780



35.6145, 36.7991, 32.7982



32.5514, 36.7991, 43.7731



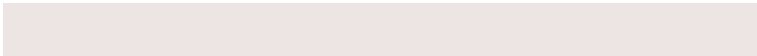
34.3460, 36.7991, 48.3396

Sweetspot

The Sweet Spot groups the original color and five complimentary colors.



37.5200, 36.8007, 36.5788



76.7843, 79.3175, 84.4173



39.4457, 37.0287, 48.3912



16.8075, 17.3008, 18.3306



88.6918, 93.3107, 101.6153



17.8044, 18.7317, 20.3988

Same Dimension

The Same Dimension uses a secret algorithm to generate beautiful new colors.



37.5200, 36.8007, 36.5788



65.6748, 63.3351, 61.4874



39.8051, 41.3710, 37.3405



9.0587, 9.1204, 9.3899



13.7547, 7.2857, 0.6813



0.5037, 0.2945, 0.0303

Inverse Universe

The Inverse Universe completely reimagines the original color for something new.



38.4748, 43.0869, 50.5450



67.7259, 76.8417, 91.4981



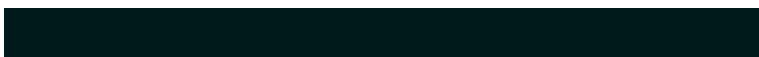
36.0219, 38.1811, 49.7274



9.2059, 10.0890, 11.5416



15.8702, 22.2001, 34.7017



0.5771, 0.8180, 1.2292

Previews

White Background



This preview shows how the XYZ color 37.5190, 36.7991, 36.5780 looks on a white background.

Color Contrast Check

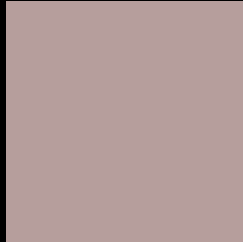
Large Text (above 18pt) WCAG AA × Fail

Any Text WCAG AA × Fail

Large Text (above 18pt) WCAG AAA × Fail

Any Text WCAG AAA × Fail

Black Background



This preview shows how the XYZ color 37.5190, 36.7991, 36.5780 looks on a black background.

Color Contrast Check

Large Text (above 18pt) WCAG AA ✓ Pass

Any Text WCAG AA ✓ Pass

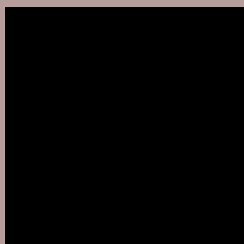
Large Text (above 18pt) WCAG AAA ✓ Pass

Any Text WCAG AAA ✓ Pass

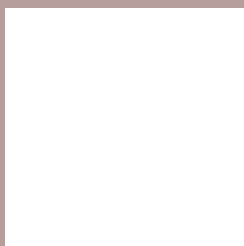
If you want to check with other color combinations, try the [Color Contrast Checker](#).

XYZ 37.5190, 36.7991, 36.5780

Background



This preview shows how black text looks on a background with the XYZ color 37.5190, 36.7991, 36.5780.



This preview shows how white text looks on a background with the XYZ color 37.5190, 36.7991,

36.5780.

Color Blindness Simulation

Color vision deficiency is a very complex topic, and I could not describe the different causes any better than Wikipedia does, so if you want to learn more, you should check out their [article about color blindness](#).

Dichromacy



Original Color

37.5190, 36.7991, 36.5780

Protanopia

35.5037, 37.0224, 38.0757

Deuteranopia

37.5190, 36.7991, 36.5780



Tritanopia

38.7235, 36.7944, 42.1069

Trichromacy



Original Color

37.5190, 36.7991, 36.5780

Protanomaly

36.1500, 36.8426, 37.5538

Deuteranomaly

37.5190, 36.7991, 36.5780

Tritanomaly

38.2862, 36.8616, 40.2190

Monochromacy



Original Color

37.5190, 36.7991, 36.5780

Achromatopsia

35.7637, 37.6262, 40.9749

Achromatomaly

36.2365, 37.1072, 39.4350

CSS Examples

Text

The CSS property to change the color of the text to XYZ 37.5190, 36.7991, 36.5780 is called "color". The color property can be set on classes, ids or directly on the HTML element.

This example shows how text in the color `rgb(182, 158, 156)` looks like.

```
.text, #text, p{  
    color:rgb(182, 158, 156)  
}
```

If you want to add a text shadow in that color use the text-shadow property, you can generate a text shadow directly with our [CSS Text Shadow Generator](#).

Here you see how black text with a 4 pixel rgb(182, 158, 156) colored shadow looks like.

```
.shadow{ text-shadow: 4px 4px 2px rgb(182, 158, 156) }
```

Border

The CSS property to change the border of an element to XYZ 37.5190, 36.7991, 36.5780 is called "border". The border property can be set on classes, ids or directly on the HTML element.

This example shows the color as border, it can be applied via the CSS property "border" or "border-color".

```
.border, #border, table{ border:4px solid rgb(182, 158, 156) }
```


If only the border color should be changed use the property `border-color`.

```
.border{ border-color:rgb(182, 158, 156) }
```

If you want to add a box shadow in that color use:

Here you see how a box with a 4 pixel `rgb(182, 158, 156)` colored shadow looks like.

```
.boxshadow{ -moz-box-shadow:4px 4px 4px  
4px rgb(182, 158, 156); -webkit-box-  
shadow:4px 4px 4px 4px rgb(182, 158, 156);  
box-shadow:4px 4px 4px 4px rgb(182, 158,  
156) }
```

Background

The CSS property to change the background color of an element to XYZ 37.5190, 36.7991, 36.5780 is called "background". The background property can be set on classes, ids or directly on the HTML element.

```
.background, #background, body{  
background: rgb(182, 158, 156) }
```

If only the background color should be changed can be used:

```
.background{ background-color: rgb(182,  
158, 156) }
```

This example shows the color as background, it is applied via the CSS property "background".

To optimize and compress your CSS code, you can use our [online CSS compressor and optimizer](#) based on csstidy. If you want to create a linear or radial gradient as background or border, check our [CSS Gradient Generator](#).

Hey! You found this booklet interesting? Support Converting Colors with the new Membership Option!

The pro membership hides all ads, plus gives you double the colors in the color bucket, and more awesome pro features!

[Learn more, Memberships starting at \\$2.50/m!](#)

**Follow me
on Twitter!**

@ConvertingColor