

Converting Colors

XYZ(37.5105, 36.6320, 34.8733)

Have a look what the booklet for
XYZ(37.5105, 36.6320, 34.8733)
contains.

XYZ(37.4916, 36.5713, 34.7887)	3
<i>Conversions</i>	4
<i>Details</i>	6
<i>Harmonies</i>	12
<i>Previews</i>	24
<i>Color Blindness Simulation</i>	28
<i>CSS Examples</i>	31

Color

**XYZ(37.4916, 36.5713,
34.7887)**

Conversions

Conversions Part 1

Format	Color
Hex	B89D98
RGB	184, 157, 152
RGB Percent	72%, 62%, 60%
CMY	0.2784, 0.3843, 0.4039
CMYK	0.00, 0.15, 0.17, 0.28
HSL	9°, 18%, 66%
HSV	9°, 17%, 72%
XYZ	37.4916, 36.5713, 34.7887
YIQ	164.5030, 17.6970, 4.1690

Conversions

Conversions Part 2

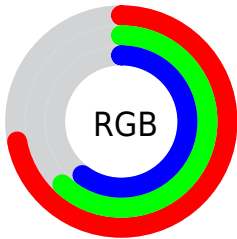
Format	Color
RYB	184, 158, 152
Decimal	12098968
CIELab	66.95, 9.13, 6.30
CIElCh	67, 11.092, 34.590
Yxy	36.5713, 0.3444, 0.3360
Android (android.graphics.Color)	4290289048 (0xFFB89D98)
YUV	164.5030, -6.1640, 17.0989
Hunter-Lab	60.4742, 4.8330, 8.2245

Details

The XYZ color **37.4916, 36.5713, 34.7887** is a light color, and the websafe version is hex **CC9999**. A complement of this color would be **37.7203, 42.3752, 51.5388**, and the grayscale version is **35.5498, 37.4011, 40.7298**.

A 20% lighter version of the original color is **70.6192, 70.0685, 68.1951**, and **16.8631, 16.0729, 14.5255** is the 20% darker color. If you saturate the color by 10%, you get **33.6386, 31.0926, 26.6372**, and if you desaturate by 10%, it is **41.9141, 42.8142, 44.2843**.

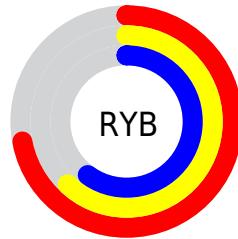
Distribution



Red (72%)

Green (62%)

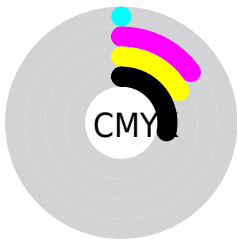
Blue (60%)



Red (72%)

Yellow (62%)

Blue (60%)

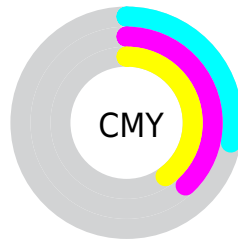


Cyan (0%)

Magenta (15%)

Yellow (17%)

Black (28%)



Cyan (28%)

Magenta (38%)

Yellow (40%)

Brightness & Saturation Gradients

These gradients show how the XYZ color 37.4916, 36.5713, 34.7887 changes by changing the brightness by 10 percent. The first figure shows a shift by +10% for each color and the second figure -10%.

Similar to the brightness gradients but the following saturation gradients show a change of the XYZ color 37.4916, 36.5713, 34.7887 by changing the saturation by 10% instead.

■ 37.4916, 36.5713,
34.7887

■ 37.4916, 36.5713,
34.7887

326.7527,
331.4507, 338.5106

■ 25.7638, 24.8757,
23.2179

■ 70.6372, 69.9129,
68.3062

■ 16.7787, 15.9845,
14.5477

■ 92.7856, 92.3278,
91.0899

■ 10.1712, 9.5132,
8.3595

119.1383,
119.0846, 118.4484

■ 5.5757, 5.0774,
4.2348

150.0605,
150.5677, 150.8001

■ 2.6271, 2.2927,
1.7550

185.9178,
187.1614, 188.5637

■ 0.9598, 0.7699,
0.3980

227.0753,

■ 0.0000, 0.0000,

229.2503, 232.1575

0.0000

273.8985,
277.2186, 282.0003

■ 37.4916, 36.5713,
34.7887

■ 37.4916, 36.5713,
34.7887

■ 33.6386, 31.0926,
26.6372

■ 41.9141, 42.8142,
44.2843

■ 30.3289, 26.3440,
19.7668

■ 46.9250, 49.8439,
55.1787

■ 27.5387, 22.2959,
14.1128

■ 52.5460, 57.6885,
67.5261

■ 25.2412, 18.9150,
9.6039

■ 58.7967, 66.3729,
81.3773

■ 23.4071, 16.1650,
6.1616

■ 65.6961, 75.9211,
96.7807

■ 22.0040, 14.0065,
3.6970

■ 72.0471, 85.8701,
107.3850

■ 20.9950, 12.3952,
2.1072

■ 73.5773, 88.9304,
107.8951

■ 20.3325, 11.2787,
1.2432

■ 20.2010, 11.0579,
1.0697

Harmonies

Analogous

The Analogous color harmony consists of three colors that are next to each other on the color wheel.



38.0852, 36.5713, 39.0832



37.4916, 36.5713, 34.7887



36.1666, 36.5713, 32.0242

Triad

The Triadic color harmony groups three colors that are evenly spaced from another and form a triangle on the color wheel.



37.4916, 36.5713, 34.7887



31.9191, 36.5713, 35.9754



35.0194, 36.5713, 49.7870

Complementary

The Complementary color scheme is a pair of colors which are on the opposite of each other on the color wheel.



37.4916, 36.5713, 34.7887



37.7203, 42.3752, 51.5388

Split Complementary

Split-complementary colors differ from the complementary color scheme. The scheme consists of three colors, the original color and two neighbors of the complement color.



33.3902, 36.5713, 48.7880



37.4916, 36.5713, 34.7887



31.6341, 36.5713, 40.5659

Square

The Square scheme is like the rectangle color scheme, but the four colors are evenly spaced on the color wheel.



37.4916, 36.5713, 34.7887



32.9556, 36.5713, 32.6696



32.1643, 36.5713, 45.3143



36.6289, 36.5713, 47.9441

Rectangle

The Rectangle color scheme consists of four colors that form a rectangle on the color wheel.



37.4916, 36.5713, 34.7887



35.0658, 36.5713, 31.2905



32.1643, 36.5713, 45.3143



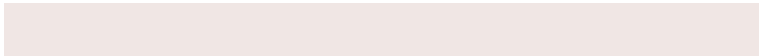
34.4558, 36.5713, 49.7736

Sweetspot

The Sweet Spot groups the original color and five complimentary colors.



37.4926, 36.5729, 34.7895



77.9800, 80.4236, 84.6048



39.1527, 35.9100, 47.6220



16.6793, 17.1528, 17.9540



88.6918, 93.3107, 101.6153



17.8044, 18.7317, 20.3988

Same Dimension

The Same Dimension uses a secret algorithm to generate beautiful new colors.



37.4926, 36.5729, 34.7895



65.0776, 62.2015, 56.9271



40.3402, 42.2682, 35.7387



9.1150, 9.2330, 9.4086



13.9567, 7.6897, 0.7487



0.5279, 0.3428, 0.0383

Inverse Universe

The Inverse Universe completely reimagines the original color for something new.



37.7203, 42.3752, 51.5388



65.5686, 74.7558, 93.1781



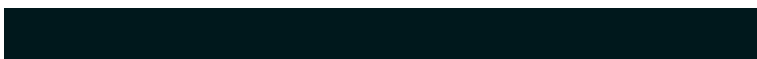
34.7338, 36.4020, 50.5432



9.1439, 9.9650, 11.5209



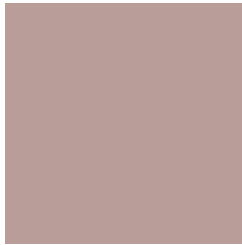
14.1096, 18.6789, 34.1148



0.5299, 0.7236, 1.2135

Previews

White Background



This preview shows how the XYZ color 37.4916, 36.5713, 34.7887 looks on a white background.

Color Contrast Check

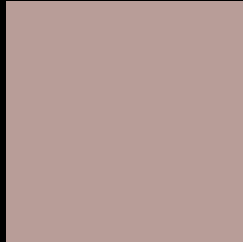
Large Text (above 18pt) WCAG AA × Fail

Any Text WCAG AA × Fail

Large Text (above 18pt) WCAG AAA × Fail

Any Text WCAG AAA × Fail

Black Background



This preview shows how the XYZ color 37.4916, 36.5713, 34.7887 looks on a black background.

Color Contrast Check

Large Text (above 18pt) WCAG AA ✓ Pass

Any Text WCAG AA ✓ Pass

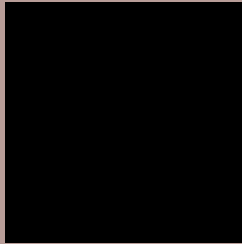
Large Text (above 18pt) WCAG AAA ✓ Pass

Any Text WCAG AAA ✓ Pass

If you want to check with other color combinations, try the [Color Contrast Checker](#).

XYZ 37.4916, 36.5713, 34.7887

Background



This preview shows how black text looks on a background with the XYZ color 37.4916, 36.5713, 34.7887.



This preview shows how white text looks on a background with the XYZ color 37.4916, 36.5713,

Color Blindness Simulation

Color vision deficiency is a very complex topic, and I could not describe the different causes any better than Wikipedia does, so if you want to learn more, you should check out their [article about color blindness](#).

Dichromacy



Original Color

37.4916, 36.5713, 34.7887

Protanopia

34.9852, 36.5320, 36.2178

Deuteranopia

37.2529, 36.4482, 34.7775



Tritanopia

38.9461, 36.6718, 41.5849

Trichromacy



Original Color

37.4916, 36.5713, 34.7887

Protanomaly

35.8591, 36.4734, 35.7219

Deuteranomaly

37.2529, 36.4482, 34.7775

Tritanomaly

38.4176, 36.6999, 39.2414

Monochromacy



Original Color

37.4916, 36.5713, 34.7887

Achromatopsia

35.7637, 37.6262, 40.9749

Achromatomaly

36.2788, 37.1494, 38.5162

CSS Examples

Text

The CSS property to change the color of the text to XYZ 37.4916, 36.5713, 34.7887 is called "color". The color property can be set on classes, ids or directly on the HTML element.

This example shows how text in the color `rgb(184, 157, 152)` looks like.

```
.text, #text, p{  
    color:rgb(184, 157, 152)  
}
```

If you want to add a text shadow in that color use the text-shadow property, you can generate a text shadow directly with our [CSS Text Shadow Generator](#).

Here you see how black text with a 4 pixel rgb(184, 157, 152) colored shadow looks like.

```
.shadow{ text-shadow: 4px 4px 2px rgb(184, 157, 152) }
```

Border

The CSS property to change the border of an element to XYZ 37.4916, 36.5713, 34.7887 is called "border". The border property can be set on classes, ids or directly on the HTML element.

This example shows the color as border, it can be applied via the CSS property "border" or "border-color".

```
.border, #border, table{ border:4px solid rgb(184, 157, 152) }
```


If only the border color should be changed use the property `border-color`.

```
.border{ border-color:rgb(184, 157, 152) }
```

If you want to add a box shadow in that color use:

Here you see how a box with a 4 pixel `rgb(184, 157, 152)` colored shadow looks like.

```
.boxshadow{ -moz-box-shadow:4px 4px 4px  
4px rgb(184, 157, 152); -webkit-box-  
shadow:4px 4px 4px 4px rgb(184, 157, 152);  
box-shadow:4px 4px 4px 4px rgb(184, 157,  
152) }
```

Background

The CSS property to change the background color of an element to XYZ 37.4916, 36.5713, 34.7887 is called "background". The background property can be set on classes, ids or directly on the HTML element.

```
.background, #background, body{  
background: rgb(184, 157, 152) }
```

If only the background color should be changed can be used:

```
.background{ background-color: rgb(184,  
157, 152) }
```

This example shows the color as background, it is applied via the CSS property "background".

To optimize and compress your CSS code, you can use our [online CSS compressor and optimizer](#) based on csstidy. If you want to create a linear or radial gradient as background or border, check our [CSS Gradient Generator](#).

Hey! You found this booklet interesting? Support Converting Colors with the new Membership Option!

The pro membership hides all ads, plus gives you double the colors in the color bucket, and more awesome pro features!

[Learn more, Memberships starting at \\$2.50/m!](#)

**Follow me
on Twitter!**

@ConvertingColor