

Converting Colors

XYZ(37.5241, 37.3788, 33.6709)

Have a look what the booklet for
XYZ(37.5241, 37.3788, 33.6709)
contains.

XYZ(37.5241, 37.3788, 33.6709)	3
<i>Conversions</i>	4
<i>Details</i>	6
<i>Harmonies</i>	12
<i>Previews</i>	24
<i>Color Blindness Simulation</i>	28
<i>CSS Examples</i>	31

Color

**XYZ(37.5241, 37.3788,
33.6709)**

Conversions

Conversions Part 1

Format	Color
Hex	B7A095
RGB	183, 160, 149
RGB Percent	72%, 63%, 58%
CMY	0.2823, 0.3725, 0.4157
CMYK	0.00, 0.13, 0.19, 0.28
HSL	19°, 19%, 65%
HSV	19°, 19%, 72%
XYZ	37.5241, 37.3788, 33.6709
YIQ	165.6230, 17.2390, 1.4550

Conversions

Conversions Part 2

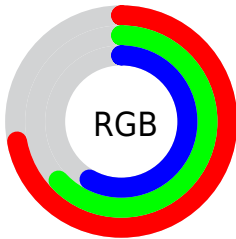
Format	Color
R_{YB}	183, 165, 149
Decimal	12034197
CIE _{Lab}	67.56, 6.62, 8.82
CIE _{LCh}	68, 11.033, 53.097
Yxy	37.3788, 0.3456, 0.3443
Android (android.graphics.Color)	4290224277 (0xFFB7A095)
YUV	165.6230, -8.1951, 15.2396
Hunter-Lab	61.1382, 2.5641, 10.1437

Details

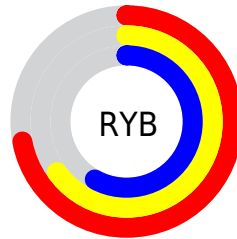
The XYZ color **37.5241, 37.3788, 33.6709** is a light color, and the websafe version is hex **999999**. A complement of this color would be **35.6941, 39.3128, 50.5070**, and the grayscale version is **36.0969, 37.9767, 41.3566**.

A 20% lighter version of the original color is **70.6765, 71.2634, 66.5301**, and **16.8792, 16.5649, 13.8630** is the 20% darker color. If you saturate the color by 10%, you get **34.1366, 32.7609, 25.8910**, and if you desaturate by 10%, it is **41.3569, 42.5193, 42.7328**.

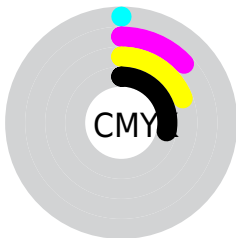
Distribution



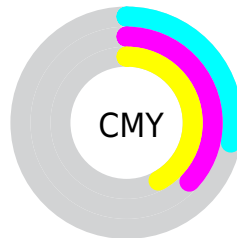
- Red (72%)
- Green (63%)
- Blue (58%)



- Red (72%)
- Yellow (65%)
- Blue (58%)



- Cyan (0%)
- Magenta (13%)
- Yellow (19%)
- Black (28%)



- Cyan (28%)
- Magenta (37%)
- Yellow (42%)

Brightness & Saturation Gradients

These gradients show how the XYZ color 37.5241, 37.3788, 33.6709 changes by changing the brightness by 10 percent. The first figure shows a shift by +10% for each color and the second figure -10%.

Similar to the brightness gradients but the following saturation gradients show a change of the XYZ color 37.5241, 37.3788, 33.6709 by changing the saturation by 10% instead.

■ 37.5241, 37.3788,
33.6709

■ 37.5241, 37.3788,
33.6709

326.8903,
334.9476, 333.3864

■ 25.7891, 25.5009,
22.3656

■ 70.6867, 71.1550,
66.5496

■ 16.7978, 16.4506,
13.9249

■ 92.8450, 93.8221,
88.9601

■ 10.1848, 9.8436,
7.9303

119.2085,
120.8544, 115.9093

■ 5.5849, 5.2954,
3.9632

150.1425,
152.6363, 147.8159

■ 2.6326, 2.4216,
1.6052

186.0123,
189.5522, 185.0983

■ 0.9626, 0.8370,
0.2945

227.1833,

■ 0.0000, 0.0000,

231.9864, 228.1752

0.0000

274.0208,
280.3234, 277.4650

■ 37.5241, 37.3788,
33.6709

■ 37.5241, 37.3788,
33.6709

■ 34.1366, 32.7609,
25.8910

■ 41.3569, 42.5193,
42.7328

■ 31.1744, 28.6437,
19.3323

■ 45.6480, 48.1931,
53.1288

■ 28.6205, 25.0113,
13.9327

■ 50.4134, 54.4173,
64.9114

■ 26.4556, 21.8451,
9.6234

■ 55.6676, 61.2063,
78.1290

■ 24.6582, 19.1249,
6.3286

■ 61.4243, 68.5742,
92.8281

■ 23.2051, 16.8290,
3.9622

■ 67.0786, 76.2872,
105.7972

■ 22.0694, 14.9337,
2.4240

■ 70.7319, 83.5940,
107.0150

■ 21.2107, 13.4087,
1.5449

■ 73.3386, 88.8074,
107.8839

■ 21.1041, 13.2184,
1.4391

Harmonies

Analogous

The Analogous color harmony consists of three colors that are next to each other on the color wheel.



38.6159, 37.3788, 37.1404



37.5241, 37.3788, 33.6709



35.9213, 37.3788, 32.1047

Triad

The Triadic color harmony groups three colors that are evenly spaced from another and form a triangle on the color wheel.



37.5241, 37.3788, 33.6709



32.3839, 37.3788, 39.5856



36.8236, 37.3788, 49.9198

Complementary

The Complementary color scheme is a pair of colors which are on the opposite of each other on the color wheel.



37.5241, 37.3788, 33.6709



35.6941, 39.3128, 50.5070

Split Complementary

Split-complementary colors differ from the complementary color scheme. The scheme consists of three colors, the original color and two neighbors of the complement color.



35.1365, 37.3788, 50.7050



37.5241, 37.3788, 33.6709



32.6082, 37.3788, 44.4783

Square

The Square scheme is like the rectangle color scheme, but the four colors are evenly spaced on the color wheel.



37.5241, 37.3788, 33.6709



32.9802, 37.3788, 35.3390



33.6029, 37.3788, 48.6431



38.2026, 37.3788, 46.5757

Rectangle

The Rectangle color scheme consists of four colors that form a rectangle on the color wheel.



37.5241, 37.3788, 33.6709



34.7928, 37.3788, 32.2547



33.6029, 37.3788, 48.6431



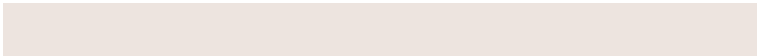
36.2723, 37.3788, 50.5022

Sweetspot

The Sweet Spot groups the original color and five complimentary colors.



37.5251, 37.3805, 33.6717



75.8969, 78.5801, 80.9235



37.7452, 34.5502, 43.8273



16.6567, 17.2145, 17.6170



88.6918, 93.3107, 101.6153



17.8044, 18.7317, 20.3988

Same Dimension

The Same Dimension uses a secret algorithm to generate beautiful new colors.



37.5251, 37.3805, 33.6717



64.8177, 63.7083, 54.7669



40.6298, 43.5899, 34.7066



9.2356, 9.4741, 9.4488



14.7786, 9.3335, 1.0226



0.5788, 0.4446, 0.0553

Inverse Universe

The Inverse Universe completely reimagines the original color for something new.



35.6941, 39.3128, 50.5070



60.9730, 67.7605, 90.1012



32.7024, 33.3295, 49.5098



9.0150, 9.7073, 11.4780



11.0357, 12.5311, 33.0902



0.4426, 0.5489, 1.1844

Previews

White Background



This preview shows how the XYZ color 37.5241, 37.3788, 33.6709 looks on a white background.

Color Contrast Check

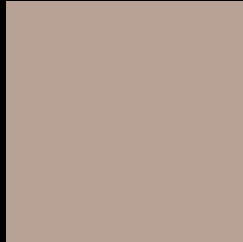
Large Text (above 18pt) WCAG AA × Fail

Any Text WCAG AA × Fail

Large Text (above 18pt) WCAG AAA × Fail

Any Text WCAG AAA × Fail

Black Background



This preview shows how the XYZ color 37.5241, 37.3788, 33.6709 looks on a black background.

Color Contrast Check

Large Text (above 18pt) WCAG AA ✓ Pass

Any Text WCAG AA ✓ Pass

Large Text (above 18pt) WCAG AAA ✓ Pass

Any Text WCAG AAA ✓ Pass

If you want to check with other color combinations, try the [Color Contrast Checker](#).

XYZ 37.5241, 37.3788, 33.6709

Background



This preview shows how black text looks on a background with the XYZ color 37.5241, 37.3788, 33.6709.



This preview shows how white text looks on a background with the XYZ color 37.5241, 37.3788,

Color Blindness Simulation

Color vision deficiency is a very complex topic, and I could not describe the different causes any better than Wikipedia does, so if you want to learn more, you should check out their [article about color blindness](#).

Dichromacy



Original Color

37.5241, 37.3788, 33.6709

Protanopia

35.6560, 37.4432, 34.6261

Deuteranopia

38.0727, 37.4053, 33.6471



Tritanopia

39.4681, 37.4176, 42.6782

Trichromacy



Original Color

37.5241, 37.3788, 33.6709

Protanomaly

36.2814, 37.5104, 34.1821

Deuteranomaly

37.8305, 37.2805, 33.6357

Tritanomaly

38.7560, 37.3766, 39.3542

Monochromacy



Original Color

37.5241, 37.3788, 33.6709

Achromatopsia

36.2450, 38.1326, 41.5264

Achromatomaly

36.6339, 37.8596, 38.6345

CSS Examples

Text

The CSS property to change the color of the text to XYZ 37.5241, 37.3788, 33.6709 is called "color". The color property can be set on classes, ids or directly on the HTML element.

This example shows how text in the color `rgb(183, 160, 149)` looks like.

```
.text, #text, p{  
    color:rgb(183, 160, 149)  
}
```

If you want to add a text shadow in that color use the text-shadow property, you can generate a text shadow directly with our [CSS Text Shadow Generator](#).

Here you see how black text with a 4 pixel rgb(183, 160, 149) colored shadow looks like.

```
.shadow{ text-shadow: 4px 4px 2px rgb(183, 160, 149) }
```

Border

The CSS property to change the border of an element to XYZ 37.5241, 37.3788, 33.6709 is called "border". The border property can be set on classes, ids or directly on the HTML element.

This example shows the color as border, it can be applied via the CSS property "border" or "border-color".

```
.border, #border, table{ border:4px solid rgb(183, 160, 149) }
```


If only the border color should be changed use the property `border-color`.

```
.border{ border-color:rgb(183, 160, 149) }
```

If you want to add a box shadow in that color use:

Here you see how a box with a 4 pixel `rgb(183, 160, 149)` colored shadow looks like.

```
.boxshadow{ -moz-box-shadow:4px 4px 4px 4px rgb(183, 160, 149); -webkit-box-shadow:4px 4px 4px 4px rgb(183, 160, 149); box-shadow:4px 4px 4px 4px rgb(183, 160, 149) }
```

Background

The CSS property to change the background color of an element to XYZ 37.5241, 37.3788, 33.6709 is called "background". The background property can be set on classes, ids or directly on the HTML element.

```
.background, #background, body{  
background: rgb(183, 160, 149) }
```

If only the background color should be changed can be used:

```
.background{ background-color: rgb(183,  
160, 149) }
```

This example shows the color as background, it is applied via the CSS property "background".

To optimize and compress your CSS code, you can use our [online CSS compressor and optimizer](#) based on csstidy. If you want to create a linear or radial gradient as background or border, check our [CSS Gradient Generator](#).

Hey! You found this booklet interesting? Support Converting Colors with the new Membership Option!

The pro membership hides all ads, plus gives you double the colors in the color bucket, and more awesome pro features!

[Learn more, Memberships starting at \\$2.50/m!](#)

**Follow me
on Twitter!**

@ConvertingColor