

Converting Colors

XYZ(37.5802, 36.4976, 40.1860)

Have a look what the booklet for
XYZ(37.5802, 36.4976, 40.1860)
contains.

XYZ(37.5802, 36.4976, 40.1860)	3
<i>Conversions</i>	4
<i>Details</i>	6
<i>Harmonies</i>	12
<i>Previews</i>	24
<i>Color Blindness Simulation</i>	28
<i>CSS Examples</i>	31

Color

**XYZ(37.5802, 36.4976,
40.1860)**

Conversions

Conversions Part 1

Format	Color
Hex	B49DA4
RGB	180, 157, 164
RGB Percent	71%, 62%, 64%
CMY	0.2941, 0.3843, 0.3569
CMYK	0.00, 0.13, 0.09, 0.29
HSL	342°, 13%, 66%
HSV	342°, 13%, 71%
XYZ	37.5802, 36.4976, 40.1860
YIQ	164.6750, 11.4610, 7.0530

Conversions

Conversions Part 2

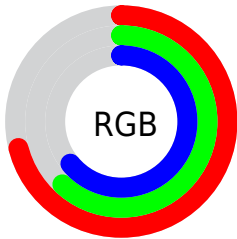
Format	Color
RYB	180, 157, 164
Decimal	11836836
CIELab	66.90, 9.66, -0.53
CIELCh	67, 9.675, 356.841
Yxy	36.4976, 0.3289, 0.3194
Android (android.graphics.Color)	4290026916 (0xFFB49DA4)
YUV	164.6750, -0.3328, 13.4400
Hunter-Lab	60.4132, 5.3132, 2.8504

Details

The XYZ color **37.5802, 36.4976, 40.1860** is a light color, and the websafe version is hex **999999**. A complement of this color would be **37.7701, 42.8287, 45.8133**, and the grayscale version is **35.6071, 37.4615, 40.7955**.

A 20% lighter version of the original color is **70.9217, 70.0343, 76.7978**, and **16.8311, 15.9899, 17.5285** is the 20% darker color. If you saturate the color by 10%, you get **33.6806, 30.4198, 33.5783**, and if you desaturate by 10%, it is **42.0419, 43.5205, 47.5314**.

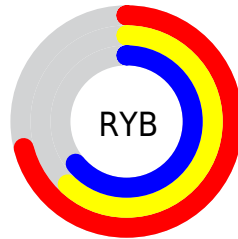
Distribution



Red (71%)

Green (62%)

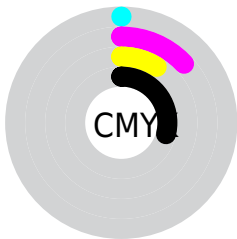
Blue (64%)



Red (71%)

Yellow (62%)

Blue (64%)

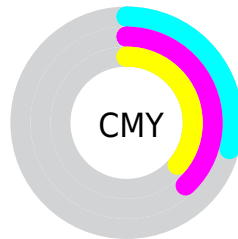


Cyan (0%)

Magenta (13%)

Yellow (9%)

Black (29%)



Cyan (29%)

Magenta (38%)

Yellow (36%)

Brightness & Saturation Gradients

These gradients show how the XYZ color 37.5802, 36.4976, 40.1860 changes by changing the brightness by 10 percent. The first figure shows a shift by +10% for each color and the second figure -10%.

Similar to the brightness gradients but the following saturation gradients show a change of the XYZ color 37.5802, 36.4976, 40.1860 by changing the saturation by 10% instead.

■ 37.5802, 36.4976,
40.1860

■ 37.5802, 36.4976,
40.1860

327.1278,
331.1303, 362.4823

■ 25.8328, 24.8187,
27.3687

■ 70.7723, 69.7994,
76.6868

■ 16.8306, 15.9421,
17.6154

■ 92.9477, 92.1912,
101.2075

■ 10.2083, 9.4832,
10.5077

119.3297,
118.9227, 130.4663

■ 5.6006, 5.0577,
5.6269

150.2838,
150.3783, 164.8819

■ 2.6421, 2.2811,
2.5545

186.1753,
186.9425, 204.8727

■ 0.9675, 0.7637,
0.8688

227.3696,

■ 0.0000, 0.0000,

228.9996, 250.8574

0.0000

274.2319,
276.9341, 303.2544

■ 37.5802, 36.4976,
40.1860

■ 37.5802, 36.4976,
40.1860

■ 33.6806, 30.4198,
33.5783

■ 42.0419, 43.5205,
47.5314

■ 30.3173, 25.2419,
27.6827

■ 47.0841, 51.5216,
55.6346

■ 27.4670, 20.9222,
22.4753

■ 52.7280, 60.5383,
64.5176

■ 25.1034, 17.4138,
17.9299

■ 58.9930, 70.6046,
74.2009

■ 23.1978, 14.6653,
14.0186

■ 65.8974, 81.7529,
84.7043

■ 21.7183, 12.6193,
10.7114

■ 70.1836, 87.4638,
94.9548

■ 20.6289, 11.2101,
7.9754

■ 72.1004, 88.2305,
105.0482

■ 19.8866, 10.3594,
5.7740

■ 72.6326, 88.4434,
107.8509

■ 19.5065, 9.9770,
4.4826

Harmonies

Analogous

The Analogous color harmony consists of three colors that are next to each other on the color wheel.



37.1027, 36.4976, 44.3191



37.5802, 36.4976, 40.1860



37.2654, 36.4976, 36.2061

Triad

The Triadic color harmony groups three colors that are evenly spaced from another and form a triangle on the color wheel.



37.5802, 36.4976, 40.1860



33.4330, 36.4976, 32.9652



33.1713, 36.4976, 46.8858

Complementary

The Complementary color scheme is a pair of colors which are on the opposite of each other on the color wheel.



37.5802, 36.4976, 40.1860



37.7701, 42.8287, 45.8133

Split Complementary

Split-complementary colors differ from the complementary color scheme. The scheme consists of three colors, the original color and two neighbors of the complement color.



32.2359, 36.4976, 43.4960



37.5802, 36.4976, 40.1860



32.3839, 36.4976, 35.4871

Square

The Square scheme is like the rectangle color scheme, but the four colors are evenly spaced on the color wheel.



37.5802, 36.4976, 40.1860



34.8454, 36.4976, 32.2142



31.9517, 36.4976, 39.2967



34.5348, 36.4976, 48.3544

Rectangle

The Rectangle color scheme consists of four colors that form a rectangle on the color wheel.



37.5802, 36.4976, 40.1860



36.6533, 36.4976, 34.1387



31.9517, 36.4976, 39.2967



32.7979, 36.4976, 45.9220

Sweetspot

The Sweet Spot groups the original color and five complimentary colors.



37.5812, 36.4992, 40.1868



75.1261, 77.1668, 84.3857



37.4674, 36.2630, 48.2051



16.1015, 16.4640, 18.0169



86.6293, 91.1408, 99.2523



17.0014, 17.8868, 19.4787

Same Dimension

The Same Dimension uses a secret algorithm to generate beautiful new colors.



37.5812, 36.4992, 40.1868



66.2943, 63.2889, 69.7708



37.6922, 37.7047, 37.1914



8.5993, 8.5464, 9.3882



13.6409, 6.9739, 3.2691



0.4558, 0.2301, 0.2432

Inverse Universe

The Inverse Universe completely reimagines the original color for something new.



37.5812, 36.4992, 40.1868



66.2943, 63.2889, 69.7708



37.6270, 41.4302, 49.1941



8.5993, 8.5464, 9.3882



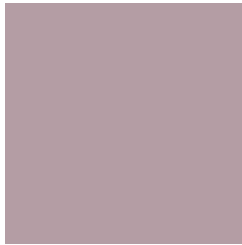
13.6409, 6.9739, 3.2691



0.4558, 0.2301, 0.2432

Previews

White Background



This preview shows how the XYZ color 37.5802, 36.4976, 40.1860 looks on a white background.

Color Contrast Check

Large Text (above 18pt) WCAG AA × Fail

Any Text WCAG AA × Fail

Large Text (above 18pt) WCAG AAA × Fail

Any Text WCAG AAA × Fail

Black Background



This preview shows how the XYZ color 37.5802, 36.4976, 40.1860 looks on a black background.

Color Contrast Check

Large Text (above 18pt) WCAG AA ✓ Pass

Any Text WCAG AA ✓ Pass

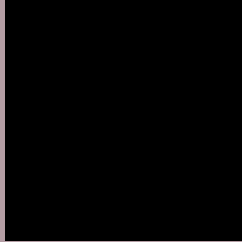
Large Text (above 18pt) WCAG AAA ✓ Pass

Any Text WCAG AAA ✓ Pass

If you want to check with other color combinations, try the [Color Contrast Checker](#).

XYZ 37.5802, 36.4976, 40.1860

Background



This preview shows how black text looks on a background with the XYZ color 37.5802, 36.4976, 40.1860.



This preview shows how white text looks on a background with the XYZ color 37.5802, 36.4976,

40.1860.

Color Blindness Simulation

Color vision deficiency is a very complex topic, and I could not describe the different causes any better than Wikipedia does, so if you want to learn more, you should check out their [article about color blindness](#).

Dichromacy



Original Color

37.5802, 36.4976, 40.1860

Protanopia

35.4124, 36.6300, 41.7631

Deuteranopia

37.2878, 36.5990, 40.2210



Tritanopia

38.1060, 36.4653, 42.5662

Trichromacy



Original Color

37.5802, 36.4976, 40.1860

Protanomaly

36.0313, 36.4408, 41.2111

Deuteranomaly

37.5181, 36.7178, 40.2318

Tritanomaly

37.9196, 36.3907, 41.5847

Monochromacy



Original Color

37.5802, 36.4976, 40.1860

Achromatopsia

35.7637, 37.6262, 40.9749

Achromatomaly

36.2894, 37.1033, 40.8463

CSS Examples

Text

The CSS property to change the color of the text to XYZ 37.5802, 36.4976, 40.1860 is called "color". The color property can be set on classes, ids or directly on the HTML element.

This example shows how text in the color `rgb(180, 157, 164)` looks like.

```
.text, #text, p{  
    color:rgb(180, 157, 164)  
}
```

If you want to add a text shadow in that color use the text-shadow property, you can generate a text shadow directly with our [CSS Text Shadow Generator](#).

Here you see how black text with a 4 pixel rgb(180, 157, 164) colored shadow looks like.

```
.shadow{ text-shadow: 4px 4px 2px rgb(180, 157, 164) }
```

Border

The CSS property to change the border of an element to XYZ 37.5802, 36.4976, 40.1860 is called "border". The border property can be set on classes, ids or directly on the HTML element.

This example shows the color as border, it can be applied via the CSS property "border" or "border-color".

```
.border, #border, table{ border:4px solid rgb(180, 157, 164) }
```


If only the border color should be changed use the property `border-color`.

```
.border{ border-color:rgb(180, 157, 164) }
```

If you want to add a box shadow in that color use:

Here you see how a box with a 4 pixel `rgb(180, 157, 164)` colored shadow looks like.

```
.boxshadow{ -moz-box-shadow:4px 4px 4px  
4px rgb(180, 157, 164); -webkit-box-  
shadow:4px 4px 4px 4px rgb(180, 157, 164);  
box-shadow:4px 4px 4px 4px rgb(180, 157,  
164) }
```

Background

The CSS property to change the background color of an element to XYZ 37.5802, 36.4976, 40.1860 is called "background". The background property can be set on classes, ids or directly on the HTML element.

```
.background, #background, body{  
background: rgb(180, 157, 164) }
```

If only the background color should be changed can be used:

```
.background{ background-color: rgb(180,  
157, 164) }
```

This example shows the color as background, it is applied via the CSS property "background".

To optimize and compress your CSS code, you can use our [online CSS compressor and optimizer](#) based on csstidy. If you want to create a linear or radial gradient as background or border, check our [CSS Gradient Generator](#).

Hey! You found this booklet interesting? Support Converting Colors with the new Membership Option!

The pro membership hides all ads, plus gives you double the colors in the color bucket, and more awesome pro features!

[Learn more, Memberships starting at \\$2.50/m!](#)

**Follow me
on Twitter!**

@ConvertingColor