

Converting Colors

XYZ(37.5862, 36.5815, 36.5324)

Have a look what the booklet for
XYZ(37.5862, 36.5815, 36.5324)
contains.

XYZ(37.5862, 36.5815, 36.5324)	3
<i>Conversions</i>	4
<i>Details</i>	6
<i>Harmonies</i>	12
<i>Previews</i>	24
<i>Color Blindness Simulation</i>	28
<i>CSS Examples</i>	31

Color

**XYZ(37.5862, 36.5815,
36.5324)**

Conversions

Conversions Part 1

Format	Color
Hex	B79D9C
RGB	183, 157, 156
RGB Percent	72%, 62%, 61%
CMY	0.2823, 0.3843, 0.3882
CMYK	0.00, 0.14, 0.15, 0.28
HSL	2°, 16%, 66%
HSV	2°, 15%, 72%
XYZ	37.5862, 36.5815, 36.5324
YIQ	164.6600, 15.8170, 5.2010

Conversions

Conversions Part 2

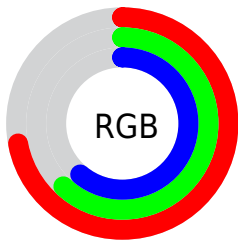
Format	Color
RYB	183, 157, 156
Decimal	12033436
CIELab	66.96, 9.41, 4.06
CIElCh	67, 10.246, 23.361
Yxy	36.5815, 0.3395, 0.3305
Android (android.graphics.Color)	4290223516 (0xFFB79D9C)
YUV	164.6600, -4.2694, 16.0842
Hunter-Lab	60.4826, 5.0820, 6.5258

Details

The XYZ color **37.5862, 36.5815, 36.5324** is a light color, and the websafe version is hex **CC9999**. A complement of this color would be **38.9853, 43.9419, 51.2272**, and the grayscale version is **35.6167, 37.4715, 40.8065**.

A 20% lighter version of the original color is **70.7729, 70.0908, 70.7715**, and **16.9098, 16.0738, 15.5759** is the 20% darker color. If you saturate the color by 10%, you get **33.3828, 30.4704, 28.0533**, and if you desaturate by 10%, it is **42.4550, 43.6491, 46.3860**.

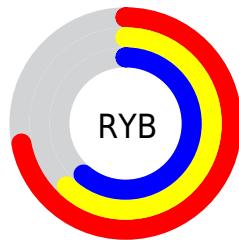
Distribution



Red (72%)

Green (62%)

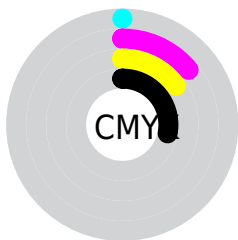
Blue (61%)



Red (72%)

Yellow (62%)

Blue (61%)

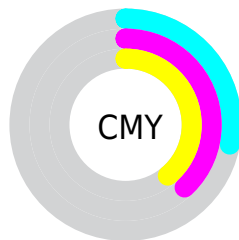


Cyan (0%)

Magenta (14%)

Yellow (15%)

Black (28%)



Cyan (28%)


Magenta (38%)


Yellow (39%)

Brightness & Saturation Gradients


These gradients show how the XYZ color 37.5862, 36.5815, 36.5324 changes by changing the brightness by 10 percent. The first figure shows a shift by +10% for each color and the second figure -10%.


Similar to the brightness gradients but the following saturation gradients show a change of the XYZ color 37.5862, 36.5815, 36.5324 by changing the saturation by 10% instead.


 37.5862, 36.5815,
36.5324


 37.5862, 36.5815,
36.5324


327.1532,
331.4951, 346.3891

 25.8374, 24.8836,
24.5527

 70.7814, 69.9287,
71.0313

 16.8341, 15.9904,
15.5281


 92.9586, 92.3467,
94.3876

 10.2109, 9.5173,
9.0402


119.3427,
119.1070, 122.3732

 5.6023, 5.0801,
4.6702

150.2989,
150.5939, 155.4065

 2.6432, 2.2944,
1.9998

186.1928,
187.1917, 193.9063

 0.9680, 0.7707,
0.5551

227.3895,

 0.0000, 0.0000,

229.2849, 238.2910

0.0000

274.2545,
277.2579, 288.9791

■ 37.5862, 36.5815,
36.5324

■ 37.5862, 36.5815,
36.5324

■ 33.3828, 30.4704,
28.0533

■ 42.4550, 43.6491,
46.3860

■ 29.8132, 25.2702,
20.8856

■ 48.0133, 51.7067,
57.6690

■ 26.8474, 20.9386,
14.9644

■ 54.2874, 60.7920,
70.4360

■ 24.4521, 17.4284,
10.2186

■ 61.3016, 70.9396,
84.7381

■ 22.5906, 14.6877,
6.5699

■ 69.0789, 82.1822,
100.6240

■ 21.2220, 12.6587,
3.9304

■ 73.3387, 88.8074,
107.8839

■ 20.2995, 11.2757,
2.1989

■ 19.7672, 10.4603,
1.2529

■ 19.6025, 10.2150,
0.9385

Harmonies

Analogous

The Analogous color harmony consists of three colors that are next to each other on the color wheel.



37.8237, 36.5815, 40.8288



37.5862, 36.5815, 36.5324



36.5839, 36.5815, 33.3499

Triad

The Triadic color harmony groups three colors that are evenly spaced from another and form a triangle on the color wheel.



37.5862, 36.5815, 36.5324



32.4261, 36.5815, 34.9382



34.4252, 36.5815, 48.9526

Complementary

The Complementary color scheme is a pair of colors which are on the opposite of each other on the color wheel.



37.5862, 36.5815, 36.5324



38.9853, 43.9419, 51.2272

Split Complementary

Split-complementary colors differ from the complementary color scheme. The scheme consists of three colors, the original color and two neighbors of the complement color.



33.0163, 36.5815, 47.1018



37.5862, 36.5815, 36.5324



31.8846, 36.5815, 38.8496

Square

The Square scheme is like the rectangle color scheme, but the four colors are evenly spaced on the color wheel.



37.5862, 36.5815, 36.5324



33.5979, 36.5815, 32.4785



32.0974, 36.5815, 43.3225



35.9683, 36.5815, 48.2171

Rectangle

The Rectangle color scheme consists of four colors that form a rectangle on the color wheel.



37.5862, 36.5815, 36.5324



35.6325, 36.5815, 32.1798



32.0974, 36.5815, 43.3225



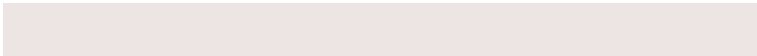
33.9208, 36.5815, 48.6081

Sweetspot

The Sweet Spot groups the original color and five complimentary colors.



37.5872, 36.5831, 36.5332



76.6801, 79.1090, 84.3826



39.8713, 37.2263, 49.3946



16.7805, 17.2467, 18.3216



88.6918, 93.3107, 101.6153



17.8044, 18.7317, 20.3988

Same Dimension

The Same Dimension uses a secret algorithm to generate beautiful new colors.



37.5872, 36.5831, 36.5332



64.5159, 61.4482, 59.7723



39.9795, 41.3678, 37.3306



9.0307, 9.0643, 9.3805



13.6861, 7.1486, 0.6585



0.4916, 0.2702, 0.0262

Inverse Universe

The Inverse Universe completely reimagines the original color for something new.



38.9853, 43.9419, 51.2272



67.5452, 77.3940, 91.6142



36.3717, 38.7147, 50.3560



9.2373, 10.1518, 11.5521



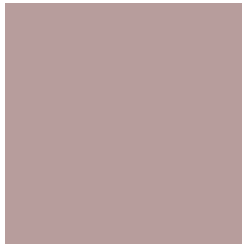
16.8324, 24.1246, 35.0224



0.6023, 0.8683, 1.2376

Previews

White Background



This preview shows how the XYZ color 37.5862, 36.5815, 36.5324 looks on a white background.

Color Contrast Check

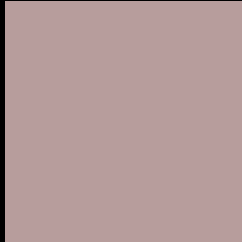
Large Text (above 18pt) WCAG AA × Fail

Any Text WCAG AA × Fail

Large Text (above 18pt) WCAG AAA × Fail

Any Text WCAG AAA × Fail

Black Background



This preview shows how the XYZ color 37.5862, 36.5815, 36.5324 looks on a black background.

Color Contrast Check

Large Text (above 18pt) WCAG AA ✓ Pass

Any Text WCAG AA ✓ Pass

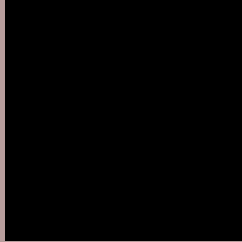
Large Text (above 18pt) WCAG AAA ✓ Pass

Any Text WCAG AAA ✓ Pass

If you want to check with other color combinations, try the [Color Contrast Checker](#).

XYZ 37.5862, 36.5815, 36.5324

Background



This preview shows how black text looks on a background with the XYZ color 37.5862, 36.5815, 36.5324.



This preview shows how white text looks on a background with the XYZ color 37.5862, 36.5815,

Color Blindness Simulation

Color vision deficiency is a very complex topic, and I could not describe the different causes any better than Wikipedia does, so if you want to learn more, you should check out their [article about color blindness](#).

Dichromacy



Original Color

37.5862, 36.5815, 36.5324

Protanopia

35.1147, 36.5594, 38.0068

Deuteranopia

37.2837, 36.6778, 36.5669



Tritanopia

38.4636, 36.4231, 41.5623

Trichromacy



Original Color

37.5862, 36.5815, 36.5324

Protanomaly

35.9759, 36.4945, 37.4958

Deuteranomaly

37.5190, 36.7991, 36.5780

Tritanomaly

38.2665, 36.6116, 39.7002

Monochromacy



Original Color

37.5862, 36.5815, 36.5324

Achromatopsia

35.7637, 37.6262, 40.9749

Achromatomaly

36.4552, 37.2200, 39.4452

CSS Examples

Text

The CSS property to change the color of the text to XYZ 37.5862, 36.5815, 36.5324 is called "color". The color property can be set on classes, ids or directly on the HTML element.

This example shows how text in the color `rgb(183, 157, 156)` looks like.

```
.text, #text, p{  
    color:rgb(183, 157, 156)  
}
```

If you want to add a text shadow in that color use the text-shadow property, you can generate a text shadow directly with our [CSS Text Shadow Generator](#).

Here you see how black text with a 4 pixel rgb(183, 157, 156) colored shadow looks like.

```
.shadow{ text-shadow: 4px 4px 2px rgb(183, 157, 156) }
```

Border

The CSS property to change the border of an element to XYZ 37.5862, 36.5815, 36.5324 is called "border". The border property can be set on classes, ids or directly on the HTML element.

This example shows the color as border, it can be applied via the CSS property "border" or "border-color".

```
.border, #border, table{ border:4px solid rgb(183, 157, 156) }
```


If only the border color should be changed use the property border-color.

```
.border{ border-color:rgb(183, 157, 156) }
```

If you want to add a box shadow in that color use:

Here you see how a box with a 4 pixel rgb(183, 157, 156) colored shadow looks like.

```
.boxshadow{ -moz-box-shadow:4px 4px 4px  
4px rgb(183, 157, 156); -webkit-box-  
shadow:4px 4px 4px 4px rgb(183, 157, 156);  
box-shadow:4px 4px 4px 4px rgb(183, 157,  
156) }
```

Background

The CSS property to change the background color of an element to XYZ 37.5862, 36.5815, 36.5324 is called "background". The background property can be set on classes, ids or directly on the HTML element.

```
.background, #background, body{  
background: rgb(183, 157, 156) }
```

If only the background color should be changed can be used:

```
.background{ background-color: rgb(183,  
157, 156) }
```

This example shows the color as background, it is applied via the CSS property "background".

To optimize and compress your CSS code, you can use our [online CSS compressor and optimizer](#) based on csstidy. If you want to create a linear or radial gradient as background or border, check our [CSS Gradient Generator](#).

Hey! You found this booklet interesting? Support Converting Colors with the new Membership Option!

The pro membership hides all ads, plus gives you double the colors in the color bucket, and more awesome pro features!

[Learn more, Memberships starting at \\$2.50/m!](#)

**Follow me
on Twitter!**

@ConvertingColor